

Church of Wicca of Bakersfield
1908 Verde St.
Bakersfield, Cal. 93304

BAKERSFIELD - All goes well here. Beltane was a most happy occasion. Shirley & Bill did the Pagan Way ritual, and Bobbi and I did the Craft one. Not a large crowd but a most happy one. It will be necessary to change the date for our August meeting. Another organization released national adds with the wrong date for their meeting, so to simplify things, we swapped weekends with them. Our meeting will now be August 12 through 14. If any Pagan or Craft groups plan to do their own ritual, please let us know in advance. Also let us know what time you prefer, and whether or not the ritual will be open to everyone. We will send a schedule of events with the August newsletter. More details next month. April 20 I recieved a notice from the post office that they had a letter for me with 5¢ postage due. The idiots are still unable to find the letter. If you sent me a letter or tape and recieved no reply, it may have been yours that got lost.

L.A. AREA - Kasie reports all goes well with the coven there. Also some new people. Kasie spent a pleasant vacation in Oregon. Gwen got here for Beltane. We miss The Queen Of The Dingbats.

NEW JERSEY - Robin has good news..and bad. Pam broke her leg in 4 places on a school see-saw. Robin plans to move in July, and then do rituals on the beach at Sandy Hook. She also plans a couple of years in Europe starting next year.

SEATTLE-TACOMA AREA - Congratulations to Bob on his 3rd degree. Stef says they plan to come here for Midsummer. Dean & Jeannie were scheduled for a handfasting at Beltane. Stef promised to send photos. Romalina is expecting a little gremlin.

GUAM - Donna had an appendectomy but has now recovered and is looking forward to her transfer to Washington state.

NEW JERSEY (again) - Pixie has been transferred from Alabama to Ft. Dix. She was very sick recently but seems recovered now. She is not too happy with some of the people she has found in the army. She is also having mail problems. Seems that various things I sent have not arrived.

NEW YORK - Leo & Anita still working hard to get the house sold. Anita reports there have been some bad vibes in that area.

St. Louis-St. Charles area - There is a photo of Sefa's gremlin, Fauna, on the front of Craft News Brews. Bet she'll grow up to be as cute as her mama.

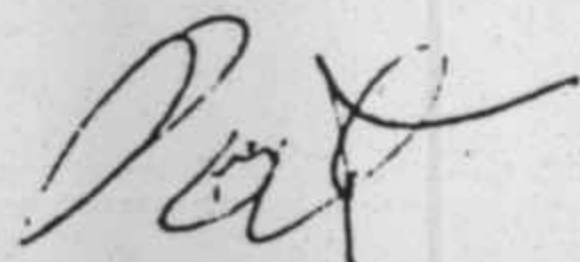
PORTLAND - Cathy phones, writes, and sends tapes to say that there is no news to phone, write, or tape about. Is it really all that dull in Portland?

STUFF & THINGS - Several years ago someone "borrowed" a book. It was a historical novel about Witchcraft in Scotland during the time of King James. I'd like to replace it but can't recall the Title nor the author. HELP! Bantam books has a paperback "The Power Of The Serpent" by Peter Valentine Timlett. All about the Druids and magick. A novel worth reading. The May issue of National Geographic has more than 50 pages of article, photos, and paintings about the Celts. Also a map showing areas of Celtic influence in the old world. I've written to see if we can order direct from them but no reply yet. The maps are 2'x2.5', in color, and suitable for framing. Also available in a very heavy paper or in plastic. Revival Mag is now 8 issues per year for \$8. They now also have Craft News Brews as a separate monthly news issue for \$3. for 12 issues. Address is P.O.E. 3343 Des Moines, Iowa 50316. Another good Pagan mag is The Crystal Well. \$6. per year. Address is P.O.E. 1164, San Pedro, Calif. 90733.

NEW YORK (again) - Hans Holzer says he has about finished his work with the "In Search Of" TV series. He now plans to resume his filming of a documentary on the Craft. Expects to be filming here on the west coast this summer.

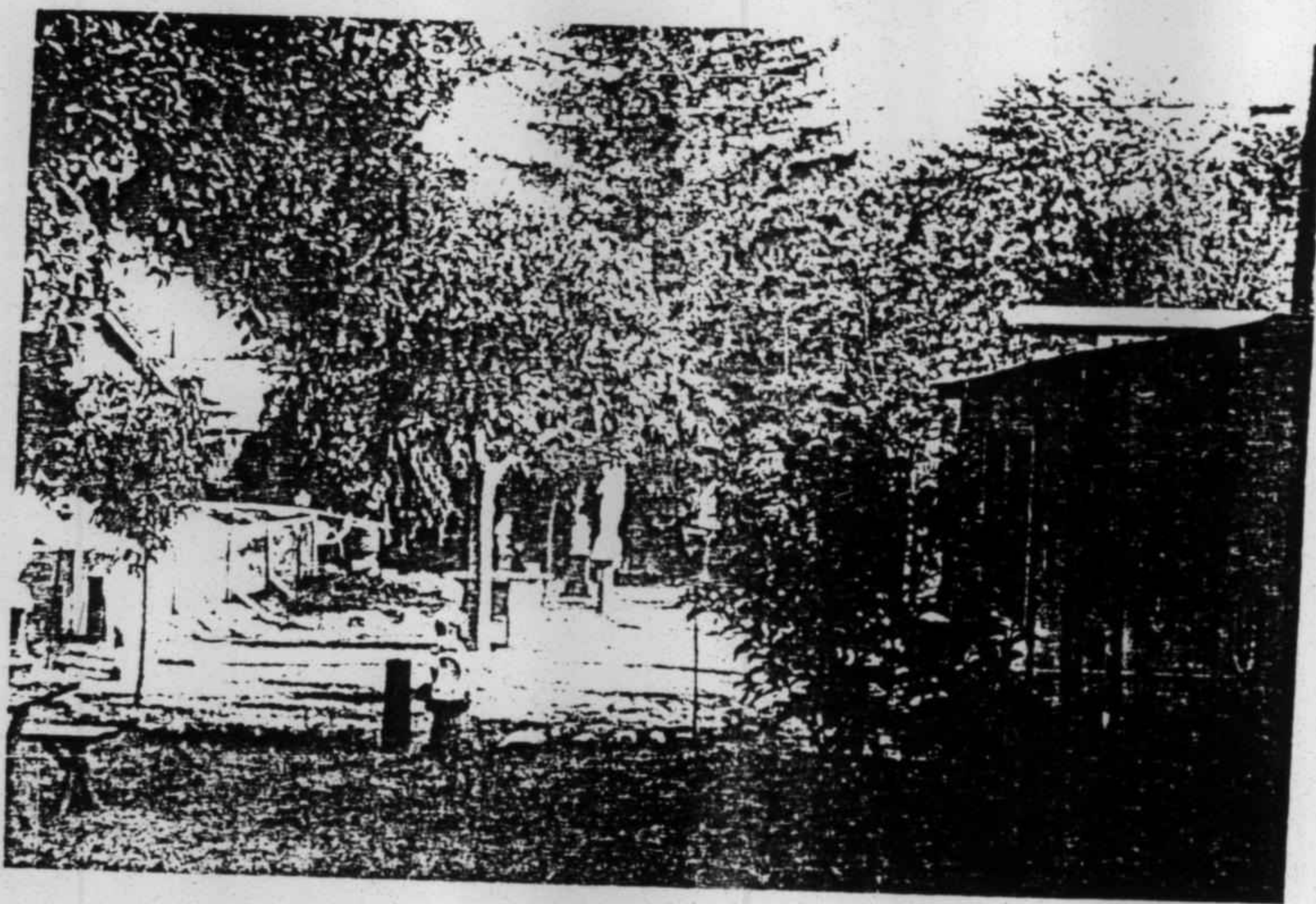
That's all, folks. Hope to see you in the mountains in August. Tell your friends.

Love and Plessed Be.



Any of this material may be reprinted.

Two views of the outdoor Circle. The God figure does have antlers and hoofs though they are difficult to see in the photo.



Two views of the temple.

