

MAIN

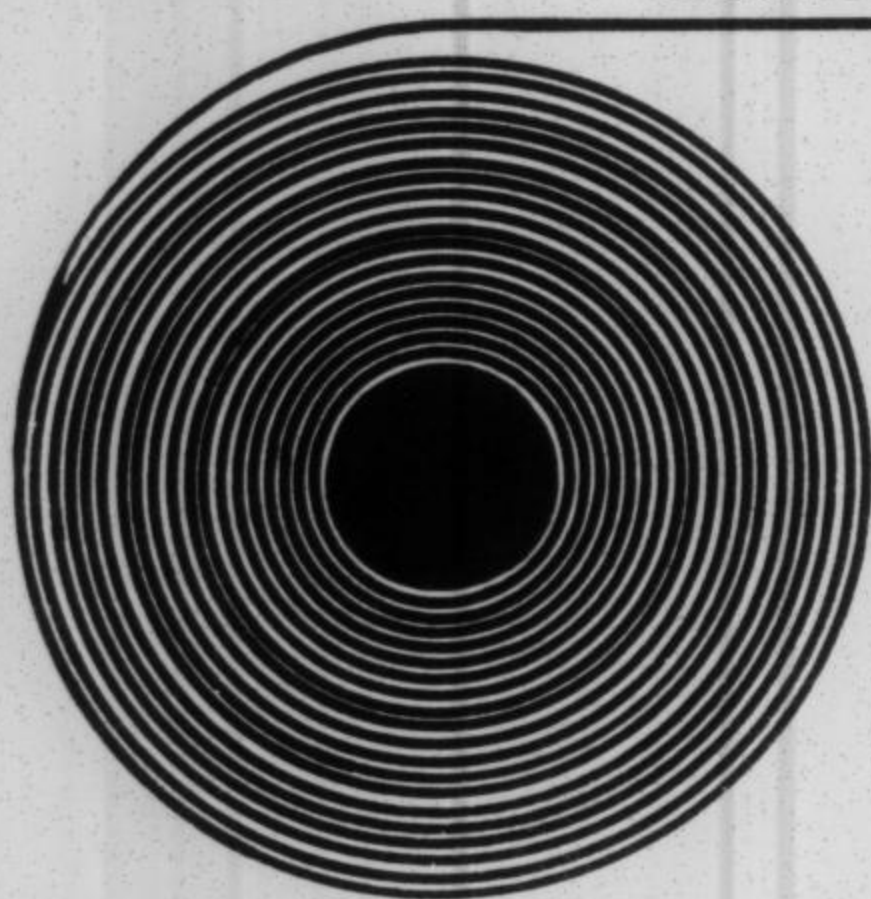


EUROPEAN MISSION I. Preparation and Background

SOUNDS & SIGHTS & EVENTS

OF THE

1975
EUROPEAN
MISSION



Enjoy some of the highlights of the European Tour that Yolanda and Mark took with Sananda in May and June 1975. This special recording was made by keeping a tape recorder handy during all of the travels throughout Europe so you could have yet another way to participate in this important hierarchical mission.

Selected from three hours of on-the-spot tapings are these and other unique and memorable events and sounds that will add immeasurably to your having been there in thought, and perhaps by your assistance.

C-90 CASSETTE FOR ONLY \$6.00

- * *Atlantic voyage aboard Queen Elizabeth 2*
- * *Shakespeare's Henry V at Stratford-upon-Avon*
- * *Sananda chants in etheric language via Yolanda*
- * *Intunement by Yolanda at Stonehenge, England*
- * *Visit to Athens and Ionian Sea cruise*
- * *Temple of Zeus at Olympia, Greece*
- * *Tour of Colosseum and other spots in Rome*
- * *Singing by pilgrim procession in Vatican City*
- * *Sounds from St. Mark's Square, Venice*
- * *Attending a festival at Innsbruck, Austria*
- * *Upon Mt. Pilatus (7000 feet), Switzerland*
- * *Choir in Notre Dame Cathedral, Paris*
- * *United Nations and highlights of Geneva*
- * *With Father Cuzon in St. Maurice Abbey, Switzerland*
- * *Sananda's projections from the Matterhorn*
- * *Communication by Sananda in Basel, Switzerland*
- * *Tivoli Gardens and other delights of Copenhagen*
- * *Sananda's projections and guard-changing: Stockholm*
- * *Beautiful and bountiful West Berlin*
- * *Comments by Yolanda, Mark and local guides*

M A I N

Mark-Age Inform-Nations
is a service for media by
Mark-Age MetaCenter Inc.
327 NE 20 Terrace
Miami, FL 33137, U.S.A.

M A I N

publishes news, information,
education & guidelines for
linking of
LIGHT WORKERS & GROUPS
as a preparation for
the Second Coming and
the New, Golden
AGE OF AQUARIUS

M A I N

Written & Edited:
Mark-Age Staff

Art & Design:
Gerry Sira Libonati

Printing & Production:
Joe Paterno, A.A.A. Printers

REPRODUCTION OF M A I N

material is granted to all
media in the interest of
spreading the good news.

Please give credit to
M A I N and send us your
reprints. Thank you.

Bulk quantities available
only by advance order.

Issued ten times yearly.
\$1.00 each.

M A I N

#23: AUGUST 1975

2 COMMUNICATIONS

*Purposes for, and background informa-
tion about, the European Mission given
to Mark-Age from January 11, 1972 to
April 23, 1975, as delivered in vocal
communications through Nada-Yolanda.*

21 MAM PROGRAMS

*In a series of MAM broadcasts, linking
these light workers, Mark and Yolanda
give some physical facts about the cap-
itals in Europe they had been instruct-
ed to visit for hierarchal projections
from Sananda's master ship #10.*

41 METACENTER NEWS

*Yolanda and Mark returned from Europe
on June 25th—Staff member Zan-Thu
plans to visit the Far East in Septem-
ber as part of Sananda's anchoring
there—Universities around the U.S.
are using Mark-Age tapes, talks and
books—Plan A Nation course officially
released July 1st.*

43 MAM PROGRAMS SUMMARY

COVER: *On the eve of their departure from
The Sanctuary on the shores of the At-
lantic Ocean at Miami Beach, Florida,
Yolanda and Mark were discussing nu-
merous plans and instructions released
to the Mark-Age staff for the European
Mission; looking northeastward toward
Europe, where they would spend the
months of May and June 1975. Thomas
Chambers, who joined the MetaCenter
staff this year, captured that memo-
rable moment with his camera.*



Prepared by
EL MORYA-MARK

DIRECTIONS FOR TRINITY DEMONSTRATIONS THROUGHOUT EUROPE

SANANDA, JANUARY 11, 1972; LAGUNA BEACH, CALIFORNIA; in response to a question by another Mark-Age staff member about the latter's trip to Europe.

"My own intentions for expanding to Europe must be put off before I can explain a whole new segment of conscious rapport. You have not received all the information that must be given regarding this phase, and we cannot give it during this present time. But you have intended to coordinate a Western hemisphere and Western influence with the Eastern changes and influences before the projections that are necessary now.

"In other words, in this particular cycle of time that you are in immediately, until your spring cycle, you have projections and preparations through you from us to manifest before it would be suitable and satisfactory. It is not that you would accomplish nothing or that you would be going in the wrong direction, as this is not the concern at this time. It is that the plan involves something much greater and more specific, and could be expanded after the reexchange of craft, Eastern and Western hemispheres, and the work that must be done until the spring cycle of this year.

"If you will wait and will hold this image until we have completed what we are experiencing and experimenting with at this time, you will see that the plan is larger and more inclusive and more satisfactory.

But we are trusting for so many changes in this tricky year that you are passing through that probably what you would experience and what you would project out would in a limited sense accomplish less than what is possible later on.

"I cannot afford to explain some of the details, because it does not involve your own individual functions or the Mark-Age aspect. But there are avenues in Europe and in the eastern segment of Europe—in other words, the Communist bloc, that you call it—that are being eliminated as blockages in the coordination plan, and therefore would expand your influence, extend your stay and appreciably further our purposes through you after that cycle of time.

"If you cannot understand all of these things now, it is greatly understood on our part. But let it not disturb you, in the sense that you have received correctly the impression that there is a work and there is a purpose and there is a specific plan. But prior to our furthering and completing what we must do through this year, you will not see any results on the outer; and could see them much more specifically and satisfactorily after this year is completed, with all of its difficulties, with all of its tricks, and with all of its unknown conditions which follow because of the unknown reactions as coming forth.

"Since you have waited and have provided a vehicle willing to experience these things, for the past ten or more years, it seems proper to extend that a little longer and to experience a greater manifestation than you would if you presumed to tamper with the projections as they are occurring at this time. It is not that you would interfere with what we are doing. It is that you would not benefit personally from it prior to the completion of our present operation.

"We have great problems or blockages in that part of the world that presumably can be uplifted in six to sixteen months of time. It depends always, of course, on mass consciousness, and the willingness of mankind in general to take these projections and to formulate new plans on the outer, new manifestations on the physical and the mental levels.

"So, although again we cannot say here what man will do with the projections we are performing and

personally directing, we do know the potential after we have completed all of the series of projections we are instituting at this particular time.

"Much has to do with structural concepts of church or religion and of sociological or political upheavals as they concern the so-called Eastern bloc in that part of Europe. Because you personally, as a group and individually, are not concerned with these conditions and have not entered into that particular aspect on the planet at this time and in this incarnation, we ask that you accept what we are saying, rather than having to receive or having to have outlined for your conscious minds each one of the details in which we are involved.

"Naturally, there are channels and individuals, and roles that are being played out, in other parts of the world and in this sphere of man's activities on the planet that can and do receive a great many more specifics than we have desired to channel through this particular unit, even though you are our choice of Hierarchal Board information and externalization.

"As you can see, I have answered this to a very great extent because I wish to expand at this time your understanding and your acceptance of the fact that although we do not give you a great many specifics, we have taken into consideration the problems and the peculiarities of your own function and purposes and problems, not only as individuals but as a unit in guiding many of the other units, light workers and program matters upon the Earth at this time."

SANANDA ON APRIL 25, 1973, IN A MENTAL RELAY TO YOLANDA while we (Yolanda and Mark) were in Idyllwild, California, gave the following information relative to the next phase of hierarchal program developments for the European continent.

Sananda's master ship #10 already had left its anchorage above the Idyllwild-Palm Springs area, from whence Sananda and his staff had been working with and through us, projecting hieronics energies and other works through our force field. The etheric headquarters ship #10 of Sananda's was moving slowly eastward toward Europe. After spending some weeks in the desert to bleed off the energies which had been channel-

ed via our force field, it would be anchored awhile over Mark-Age MetaCenter in Miami.

Then the craft would be anchored over Europe from the summer of 1973 for a two-year period. The purpose would be for attempting the mass awakening of the people on the European continent to the hierarchal plan and program.

Sananda said Mark-Age should concentrate in bringing forth the establishment of plans for the University of Life during that two-year span. Then there would be the need and the demand for these teachings for the Europeans. Translations into other languages also would be involved after those two years. Mark-Age was to work steadily and methodically for this European awakening, without any undue concern or any attempts to plan or to organize from the Earth plane for this awakening, for such was not our function.

Sananda indicated this new announcement of hierarchal plans was a fulfillment of his answer of January 11, 1972 in Laguna Beach, to the effect that they would need as much as sixteen months to prepare for the awakening and for the work that had to be done in Europe; and that the work Mark-Age had to do in person in Europe would be better reinforced and more productive if we allowed them time to prepare from the etheric. From January 11, 1972 until April 25, 1973 is fifteen and one-half months.

ON APRIL 25, 1973, SANANDA CHANNELED a discourse through Yolanda, which was published in full that spring. Following are pertinent excerpts.

"Ship #10 will be projecting new hieronic special energies to the entire continental United States and will succeed in anchoring them through both the eastern and the western coasts, along with all the various MAM broadcasting linkings that are in conscious awareness and are tuning in to the new projections through the MAM broadcasts and the other information they have received during that time. This will last until the end of May. Then there will be a short break so it can be absorbed....

"An attempt is being made, this year particularly, to coincide spiritual hieronic energies and changes with the normal activation and changes within the

seasonal structure of the planet itself, as it affects this particular continent....We are hoping, for at least this seasonal projection, to set up the rhythm and the vibratory rate so this type of concentration is not repeated constantly for the rest of the program....Prior to this experimental time, never before have we attempted to resonate the Earth and all life upon it to the cosmic fourth dimensional rate.

"As previously given on the day prior to this one, we also will align all of Europe, and its closest allies to that area, with this vibratory rate during this summer and for approximately two years, so we can bring at least one half of the Earth planet into an agreed vibratory consciousness. Then the rest will spread north and south from there. The linking will take place circumference-wise."

AT OUR WEEKLY HIERARCHAL BOARD MEETING, FOR STAFF MEMBERS ONLY, OF SEPTEMBER 11, 1974, Sananda told Yolanda that it was not decided yet if he would require our physical force field in Europe. The computations of what would be accomplished by our physical presence there in order to anchor his energies from ship #10 were not completed.

But he advised that we should gear our thinking and schedules so as to be free to leave for Europe in May 1975, if he so requested it. We would leave about the first week of May, and would not be required to remain there after the beginning of the summer cycle, or from June 21-24.

DURING THE WEEKLY HIERARCHAL BOARD MEETING FOR THE MARK-AGE STAFF ON OCTOBER 2, 1974, Sananda gave these instructions. "The trip to Europe, if it eventually is authorized, will occur approximately around May 10th and will be ended approximately at the introduction of the summer cycle; a six-to-seven-week period.

"Your work in Europe will not involve public works; nor will any future works of yours involve public works as they have in the past. For that time has passed. The public or the masses have been given this opportunity and have by-passed it. Until the time can come when they can accept the trinity in action as externalized through the Mark-Age unit—which is El Morya,

Nada and Sananda—it will not be given in a public manner.

"But your works will be quite different, the expectations of your accomplishments will be quite different, than anything you would assume. It will be all inner plane works, understandings and anchorings, with the consciousness of the high Self in operation decreeing and enforcing those things for the entire continent of Europe which we of the Hierarchy desire, not which the masses or the leaders of the European continent would even acknowledge.

"If you are to go to establish a branch University of Life in California, it would not occur until late fall of 1975 or possibly the winter of 1976; which is to say, January or February 1976, but before the spring of 1976. (*See page 45 of this issue.*)

"This is because you will begin to channel out the same type of trinity action in the high Self state to prepare the way for the Eastern hemisphere. The linking between the East and the West will become an eventuality and a necessity after that time."

IN A COMMUNION WITH SANANDA ON OCTOBER 15, 1974, Yolanda received this information. The reason he could not give the authorization to go to Europe in the spring of 1975 was because of the potential danger due to the tremendous impact of the frequency vibration change that must occur.

If we were to be there then, the mental and the physical danger of such exposure, due to reactions by the peoples of that area to this inner plane planting of the new vibration, could be expected to cause resentment, reaction and rebellion against what Mark-Age represents. There would be a very real danger mentally, emotionally and physically. The Hierarchal Board did not know if this exposure should be permitted.

After learning the techniques for this type of implantation of a new frequency vibration, we would return to California and prepare for such implanting in the Eastern hemisphere. This would be done by sending it across the ocean, in the same manner it was to be done from The Sanctuary in the Miami area from late 1974 until the European trip and thereafter. Thus the planet is being subjected to this implantation in a sequential order of different areas at different times

so it will not upset the equilibrium of the entire mass consciousness of the world at the same time. It is a slow and deliberate process by the Hierarchal Board.

ON OCTOBER 27, 1974, SANANDA TOLD YOLANDA the following. "It is almost certain that you will be required to be present physically in Europe during the last six weeks of my sojourn in master ship #10 over that continent. Before you do travel there it will be necessary for me already to have anchored certain patterns and projects through you two. It will take four to six months to do that....

"My master ship will be anchored over the Eastern hemisphere for six years after leaving Europe. This will bring forth the linking between the Eastern philosophies and the Western externalization. During that six years the Jewish people will begin to accept that we are in the latter days and that the Messiah is due by about the end of this century. Even if they do not accept that Sananda was Jesus, and the Mark-Age program, they will begin a movement of great proportions on a vast scale to see and to work toward this arrival of the Messiah.

"That is part of what will be done during the six years in the East, whence most of these vibrations for the Messianic and the Hebraic faiths originally were laid. Next, it will involve an incorporation with the Eastern philosophies and religions in order to allow for a unification on the spiritual-religious level. Next will be the philosophic levels or consciousness of man. Finally, we can work with the material, mortal consciousness for completion by 1980-82."

As was published by us in the booklet *The Master Plan for the Spiritual Earth* in early 1973, the mass educational program is the twelve-year plan from 1972 to 1983.

SANANDA TOLD YOLANDA ON DECEMBER 18TH THAT IT WOULD BE ESSENTIAL FOR US TO MAKE THE EUROPEAN TRIP. The Sananda-Nada-El Morya trinity solidification and the anchoring of our light bodies were in part preparations for the work Sananda and others of the Hierarchal Board would perform while we would be in Europe. The energy force built up in our auric fields would then be able to affect all who would come into our orbit.

DURING OUR WEDNESDAY EVENING HIERARCHAL STAFF MEETING ON MARCH 5, 1975 the auric field of Yolanda as Nada expanded so as to include the island of Manhattan in New York City. We did not understand this connection, although we had known for years that, since Yolanda was born in Brooklyn, she had been assigned New York City as her special area for energy projections.

It was not until March 19th, when it was decided we would fly to New York City and take the ship Queen Elizabeth 2 to England, that this linking with Manhattan was understood. For the QE2 docks in Manhattan, and we would stay at a hotel for one night in Manhattan before embarkation.

So, the European Mission would begin with the trip to New York City, and a five-day voyage from there to England. This would retrace in reverse the ocean route uncounted millions of people had taken when coming to visit or to live in this nation.

FROM MID-DECEMBER UNTIL OUR ARRIVAL IN EUROPE THERE WERE CONSTANT STEPPINGS-UP OF HIGHER ENERGIES in both of us, especially in Yolanda, and in all of the staff. Sananda indicated on March 12th that the mind, the soul and the body of a channel had to be of a certain level of clarity and purity before a master such as he could transfigure totally through that person.

For that reason, those on the celestial and the etheric planes, cooperating with our etheric spacecraft associates, were working to increase gradually the level of white light in both Yolanda and me. *White light* is a term used to indicate the cosmic energy for spiritual activities through our physical force fields.

Sananda informed us for the first time that a level of 1000 was only the starting point for demonstrating the light body in a physical form, as he expressed during his three-year ministry as Jesus. In order for him to project his personal vibration continuously through our combined force field in Europe, it would be necessary for us to reach this level, as recorded on our electronic equipment.

Prior to this, white-light registry was approximately as follows. Spiritually unawakened person: 100-

200. Most program workers: 200-300. Psychics and channels not working with the Hierarchal Board: 300-350. Staff members at MetaCenter: 350-400. Yolanda and I during a Hierarchal Board communication or meditation: 600-800; other times: 450-600.

By the ninth of April, Yolanda reached 1025. Our daily average, even while working ten hours a day in preparing extensively for our departure for the European Mission, was an unprecedented 750-880.

This is being revealed for the purpose of indicating that the changing of dimensional frequency from third (mortal) into fourth (spiritual light body) is occurring at a remarkable rate. We are in the last part of rending the fourth phase of the seventh veil, and this is scientific proof of that. The forthcoming *Anchoring the Light Body on Earth* book will give extensive data and proof concerning these white-light readings.

SANANDA GAVE YOLANDA ADDITIONAL INFORMATION ABOUT THE EUROPEAN MISSION ON MARCH 12TH. We were to act as his personal ambassadors for the spiritual Hierarchy as externalized on Earth through Mark-Age. But we could not represent ourselves in any physical way as such. If we did, we literally could be shot down, as he phrased it, in physical, mental, emotional senses of the phrase.

Our work must be behind the scenes, with no indication of who we are or what we were doing there, other than with a few selected Mark-Age Family members we would meet. But there could be no meetings, no conferences, no telling anyone else even about Mark-Age or the hierarchal plan.

For the first time he indicated our purposes and itineraries in part. We would have to be in seven major capitals, representing not only the government seats but also the power centers of financial and other influences. In those capitals are made major decisions that control the affairs of Europe and much of the rest of the world.

Those capitals are: Amsterdam, Athens, Berlin, London, Paris, Rome, Stockholm. While we would be in those cities especially, Sananda would be able to translate totally his personal vibrations and energies—to trans-

figure, as it were—through us as clear channels of the spiritual government which will come later. He would be able to issue decrees and announcements as to what those governments and the people they represent are expected to do in order to receive the Second Coming. These will cause changes which will permit realignment of those nations and their governments with the spiritual forces that will anchor Sananda's government on Earth after about the year 2000.

All during the spiritual mission in Europe we would vocally and mentally, via our discussions and by taped and written reports, analyze our reactions to the areas and the projections. From this Sananda and others would be able to ascertain additional information needed for his decisions and implementations. We did not understand this fully in the conscious aspect; but since we have worked in this way so many times in various places, we know it is effective.

Our first capital would be of our own choosing, although London was the probable choice. The mission would end by June 25th. There was no preferred route indicated, as to the order of capitals or countries visited.

Only the associates at MetaCenter would know our route in advance, thus being able to work with us in special hieronics projections and by thought. Dr. Robert especially would be in touch with us via hieronics, being able not only to monitor our health and all vital aspects but also to measure other data, and to project via this equipment any necessary assistance.

Also, this equipment will be used, as it has been on numerous occasions for years, by those in celestial and etheric planes, as well as aboard spacecraft, to broadcast and to amplify what not only we of the staff but also those of the MAM network and others in the Mark-Age Family think and project.

The fruits of all this work by many on various planes will not be seen on Earth immediately, but they will come to harvest eventually, perhaps long after we have left Europe. There will have to be considerable shiftings of policies by those whose areas were covered by Sananda, and those aboard his master ship #10, for the two years ending June 25, 1975 and by our physical visits to many of the same locations.

An armada of interdimensional spacecraft would be released, Sananda further stated on March 12th, throughout Europe while we were there. Although perhaps we might not see them, nevertheless they would attract considerable attention. It would give cause for attention and serious thought as to the meaning behind this European Mission; especially by those who knew about it beforehand, for it was mentioned in a MAM broadcast and in a *MAIN* magazine prior to our trip to Europe.

As part of the mass educational program and for our visit there, these spacecraft would help anchor the spiritual energies to be released at that time, thus additionally supporting the work of many of us on various planes.

As for our overall itinerary and method of travel in Europe, we had been considering escorted tours and independent travel. For the latter, we had thought primarily in terms of an auto which had been offered by a MAM leader temporarily in Sweden from Texas. This seemed to offer the greatest freedom, at the same time presenting the greatest amount of plans and problems for us.

Sananda solved it quickly on March 12th by stating that under no conditions could we drive ourselves by auto during this trip. We could utilize any and all other methods of travel: bus tours, airplanes, trains, taxis. But I was not to be hampered by the trying task of driving, for I had to be free also for concentrating fully on the projections, as well as my own intunements and analyses of proceedings. We should make as many arrangements as possible before leaving for Europe, thus allowing the associates in Miami to know where we would be; also, providing us with only minimal arrangements to make while in Europe.

With this much known about tour arrangements, we took the list of seven major capitals to the American Express offices about six blocks from MetaCenter. There we were extremely well advised and cared for by a tour director who was native French, who had been around almost all of the world, who had been in tour work for many years, and who had been with American Express for years.

He immediately knew that there were only two tours, offered by Globus Escorted Tours, that could give us

five or six of the capitals, including Athens. The main problem in arranging an escorted tour was Athens, for most tours include it in other areas and manners.

So, we selected the twenty-two-day escorted tour that started in London, flew directly to Athens, then worked to Paris via tour bus. Even the tour was symbolic: twenty-two represented the initial twenty-two that began the linking-of-lights program in early 1970, and the tour was named *Rainbow*.

The entire itinerary will be given later, but it is pertinent to note that we then decided to fly to New York City on April 30th and to return to Miami via direct flight from London on June 25th, both dates occurring on Wednesday.

We would board the Queen Elizabeth 2 on May 1st, arrive in London May 7th, do some independent sight-seeing there, join the escorted Globus tour in London on May 12th, and leave it in Paris on June 1st. From there we would travel on our own via trains, ships and planes, and would arrive in London about June 24th for our return trip to Miami on the 25th.

The entire mission would last exactly eight weeks. Eight has the spiritual significance of beginning on a new octave, a spiritual one, after having completed a physical cycle of seven steps. This European Mission certainly would be stepping into a new octave and level for the hierarchal program. It was to be the first time we had been out of North America for the hierarchal plan.

WHILE WE STILL WERE DEBATING ON WHETHER TO SAIL TO OR FROM EUROPE, or both ways, or to fly one or both ways, Sananda gave his opinion at a hierarchal meeting at MetaCenter on March 19th. He said it would be better to go to Europe by ship, for Zorrah (see our *Visitors From Other Planets* book for information on him and his participations on others of our hierarchal trips) could monitor us from his spacecraft while we were on water, the entire voyage.

Sananda stated also on that date why he did not wish us to enter Communist countries yet; other than crossing into Berlin, which might be via airplane, anyway. He said they did not wish to mix the vibrations and the effects of their work in stimulating the mass educational program. For those in that area are under

political dominance and do not have freewill choices to pursue their own desired experiences. That will be possible later, when the Hierarchal Board has decrytallized such political dominance.

His final announcement brought joy to all the thirteen staff members present. He said it would be advisable for us to fly back from London to Miami directly, for his master ship #10 would accompany us. It then would anchor briefly over Miami for some special light-body work with us, before it departed to circle the Earth prior to concentrating on the Eastern hemisphere for the next six years.

FURTHER INFORMATION ABOUT THE PURPOSES OF THE EUROPEAN MISSION were announced at the regular Wednesday hierarchal meeting on March 26th. Sananda said he would be our constant companion during the entire mission. Our whole concentration was to be one of conveying his personal instructions every moment.

We had been considering giving the schedule for the major capitals on a MAM tape so that at least those proven projectors would be able to concentrate with us on our days in those cities. But we sought Sananda's desires in this. On this March 26th, he stated that we were not to do this, for one major reason.

He did not want anyone, including us, to have any preconceived ideas of what should be the projections in any city. Rather than anyone else projecting thoughts as to what we should be doing, thus interfering with the clarity and the purposes of our receiving what Sananda wished us to project, and instead of our receiving the thoughts of others on the Earth plane, we were to be receptive to hierarchal directions at all times.

We were not given any idea as to what information we would be receiving from Sananda. But he did specify that we were to be careful not to go to any unorthodox or unconventional places during the time in Europe. We did not know what he meant, but he did explain that we would receive proper inspirations as to what places were acceptable. We would not be on a pleasure trip, but would be there to act as a focal point for the spiritual government of this solar system.

Prior to the meeting of the 26th, on the same afternoon, we made final arrangements for the trip over and back and for the escorted tour. Remaining for firm-

ing as much as possible before our departure were plans for the period from June 1st to June 24th. This was to provide some independent travel, to visit the two remaining capitals of Berlin and Stockholm, and to visit with four or five Family members in four nations.

In addition to the seven major capitals requested by Sananda for visitations during our European Mission, we would be in seven other capitals: Bern, Bonn, Brussels, Copenhagen, Oslo, Vaduz, and the Vatican certainly could be included as the seventh. *

In that respect, 1975 was proclaimed by Pope Paul VI as the Holy Year of Renewal and Reconciliation. Since 1300, the Roman Catholic Church has held holy years; every twenty-five years since the fifteenth century. All Christians were urged by Pope Paul VI to visit Rome and other shrines in Europe and the Holy Land. This would be the last such holy year in the twentieth century.

We did not know of this until March 1975, while poring over tour booklets. But how appropriate that Mark-Age was asked by Sananda to participate in the special European Mission during this year of such significance to a large section of the Christian peoples.

The nations to be visited included these initially, plus perhaps one or more others to be added: Austria, Belgium, Denmark, England, France, Germany, Greece, Italy, Liechtenstein, Netherlands, Norway, Sweden, Switzerland, Vatican.

AMONG THE IDEAS AND INSTRUCTIONS SANANDA GAVE YOLANDA AT OUR HIERARCHAL MEETING OF WEDNESDAY, APRIL 2, 1975 was this, concerning the forthcoming European Mission. His light would radiate through her physical vessel and force field to such an extent that the Earth elements would be required to respond. Although this also applied to such radiations through me, it is of great importance in Yolanda's case; for she is of the Seventh Ray, which has special rapport with and command over the elements.

As Sananda explained during this meeting, it was told in the days of his crucifixion that if men did not respond, the rocks would cry out, for the Lord did pass that way. This means that the light of this energy he radiates is so tremendous and so pure that even

the most elemental forms are required to respond, to transform and to transmute due to that energy. Man can make it easier if he will work with this energy. But if man refuses or does not do so, then the elements will respond independently of man's selfish mortal will.

Simultaneously, while Yolanda was in communion with Sananda, Dr. Knapp was recording scientifically the level of her white light on our New Age equipment. As verification of Sananda's information, Yolanda achieved the 1000 light reading required for manifesting Christ powers on the Earth plane.

AS SANANDA'S AMBASSADOR, NADA SPOKE for him at our hierarchal meeting of April 9, 1975. The purpose of such spokespersonship was to release and to disqualify all old material operations and systems, and to introduce the spiritual laws that henceforth must function in Earthman's consciousness. She was asked by Sananda to introduce this as the theme and the function Nada and El Morya were to perform in Sananda's name during the European Mission.

He also introduced into her force field those hierarchal agents of other planes who would play major roles during this mission. They included: Lord Uriel, St. Germain, Glo-Ria, Zorrah and Zumah.

The white light was brought to a new high for Yolanda during that meeting, for the first time exceeding the required 1000 they had been working toward since late 1974. Sananda indicated this would be the degree of power in our force fields during the time, and only then, that he would be projecting through us for his purposes while in the seven major capitals. It would not be necessary to attain that power level in other capitals and areas, for they would pick up the new vibratory rate from the projections in the seven major capitals.

He went on to say that all things on Earth now must be in a symphonic harmony of seven major and five minor aspects. There are seven major spiritual centers in the physical body of man, which we know as the chakras. There are five minor spiritual centers also, represented by the five physical senses. When we recognize and use this harmony of seven major and five minor, we will be able to manifest anything of spiritual purpose by concentrating on the seven major cen-

ters and then repeating it, and allowing it to be picked up, in the five minor centers. This information will be utilized in our present special electronic equipment, and more especially in such equipment yet to be revealed to us.

My thought on the seven major and five minor centers was that we already knew of the seven major capitals; and that, of the seven other capitals we intended to visit, Vaduz and Vatican City actually do not qualify as capitals in the same sense as do Bern, Bonn, Brussels, Copenhagen and Oslo. Thus, we would have the five minor centers to pick up the vibratory rates and the decrees established in the seven major capitals. Before departing for Europe, Yolanda prepared MAM broadcast #80A, for the week of June 8, 1975, developing this theme for Sananda on *symphonic harmony*. We plan to publish this discourse later in a future issue of *MAIN* magazine.

THE PATTERN OF GIVING US ADDITIONAL INFORMATION ON THE EUROPEAN MISSION CONTINUED at the Wednesday evening hierarchal meeting of the staff on April 16th. This time it concerned the functions of the Mark-Age staff while Yolanda and I would be in Europe. Then these or similar functions could be repeated with the Mark-Age Family, the MAM network and other light workers, to augment and to amplify the new vibratory rates and the hierarchal decrees to be issued by Sananda through Yolanda and me. For that reason we mention it here.

He likened the function of the staff to that of the ground crews backing up, and aiding in many ways, the astronauts while they were on missions. The astronauts would not be able to perform those space flights without the assistance of many on the ground, playing their own individual roles but interdependent on all the rest of the team.

Sananda explained it in this way. Our mission in Europe, going as ordinary tourists and not as program workers publicly and thus not giving out the program information we have within our consciousnesses, would enable us to act as a bridge from the old to the new.

Within us already is the seed of New Age consciousness and the new vibratory rate. Within us already is transmutation of the light body. We are ready to step

forth in the light body at any moment; which is a major aspect of the entire mission to Europe. Yet, our appearances, conversations and physical activities will seem as ordinary as those of any other tourist with whom we travel or of any person we meet.

Our function is to greet, and to exchange with, others as follows: in a silent and inner plane manner, not to their outer attention. "I know what is within you. I know what is about to transpire within your bodies, your minds, your souls. Therefore, I hold you steady in this transmutation so you will come through it easily and gradually, as I am demonstrating for you at this moment."

In this manner is our visit to those areas wherein the people are unaware of the hierarchal program more subtle and yet more important than if we were to manifest the changes already taking place within us, and soon to take place within those whom we greet and with whom we exchange these energies.

This trip will be another experiment for the Mark-Age testing unit. Future trips of this purpose, magnitude and importance will not have to be in the same manner. For if the Mark-Age staff succeeds in the back-up role to the extent that is expected by the Hierarchal Board, then the Mark-Age Family members, those of the MAM network especially, and eventually all linked light workers can be called upon as the program develops. With so many working in such a consciously cooperating manner in the way patterned by this European Mission, other important hierarchal projects can be accomplished. So, all of us can be involved in forthcoming Second Coming works.

DURING OUR WEDNESDAY HIERARCHAL MEETING OF APRIL 23RD, Sananda performed a transfer-of-energies ceremony through Yolanda. Dr. Robert verified the light measurements on the electronic equipment. Yolanda's white light was raised to the highest peak yet: 1187. Her daily level already was established at over 1000.

Sananda entered her force field, telling her the trinity unification was completed. Then he transferred through Yolanda the energies which raised me to a white-light reading of 1007. This was the first time I had come near the 1000 level. Although I did not

feel any unusual experiences or sensations, all twelve others present did.

Sananda went on to explain how this transfer of energies will be expanded. As the Christ Self representative for the race, he had transferred it to Yolanda as the subconscious representative. She accepted it willingly, then transferred it to me as the conscious representative. As a team, Yolanda and I then transferred it to each of the other Mark-Age staff members.

Each of them will aid Yolanda and me in transferring these energies to the Mark-Age Family membership and the MAM network. Each of these will help in transferring it to their families, friends, associates, to all on Earth. As this occurs in successive stages, it will be amplified and become increasingly powerful.

The reason Sananda brought this to our attention at this time and that the ceremony was performed was because it was the process to be used while she and I were in Europe. We would not need to speak aloud the hierarchal program, we would not have to give lectures or talks or have conferences. Our mere presence there would cause the transfer of energies to those with whom we came in contact, and indeed to all in Europe.

This transfer of energies from Sananda and those in higher planes would have various effects on these people. How they handled it, what the reactions would be, and any manifestations would be under observation by those of the Hierarchal Board, as well as to a limited extent by Yolanda and me.

Thus further work for the cleansings and the elevations of the Mark-Age staff members, including Yolanda and me, had been necessary before this transfer process could be initiated. Any one of the staff who accepts the position of being such has to accept also this responsibility. For the process has been opened and cleared. Now the mere presence of staff members, and eventually all of the others mentioned in the previous stepping-down or stepping-forth stages, will change automatically those people with whom they have any relationship.

So, our thoughts and motives and actions must be as pure and as clear and as high as possible. Isn't this a large part of what the light workers have come to do in this Second Coming program? Then, we must do



PROGRAMS

**A
R
K**

E U R O P E A N M I S S I O N : 7 M A J O R C A P I T A L S



MARK: MAM broadcasters, Family members and all others listening to or reading these special European Mission broadcasts, are you ready to come in thought with Yolanda and me on our special hierarchal tour of Europe for this most-important mass-educational-program project?

**G
E**

Since we like to have a main theme for special projection-work in each of these MAM broadcasts, we will mention this one now and will work on it throughout. That is, from continent to continent, from country to country, from town to town we will think upon this theme. And in our meditations as we think upon this theme, we will add needed emphasis to it.



**E
D
I
T
A
T
I
O
N
S**

Let our theme be this. Yolanda and I will be passing through at least fourteen nations, including the United States of America, during this European Mission. We already have thought of how easy it is to make such long and extended trips in the United States, where we have one language, one nationality, one set of national laws, one major way of life, one currency, one set of measurements of different things, no customs at state borders; in short, most things involved in such a trip are the same throughout this vast nation.

How different it is when we come into another continent, such as Europe with its many nations and ways of life; especially



Amsterdam

ways of individual government, different fixed kinds of language, money, and so on and on. How much better it will be when there is one major national citizenship: the I Am Nation.

Let us envision this time coming very soon; no later than soon after Sananda's return to establish spiritual government on Earth, and preferably much sooner in many important respects. One Earth, one spiritual nation, one united people who love God and love one another in all proper ways. So be it!

Please add your personal thoughts on this, especially you who live in Europe and you who have visited there and thus know full well how different it is. Much of the difference is wonderful, but much could be eliminated to make it better.

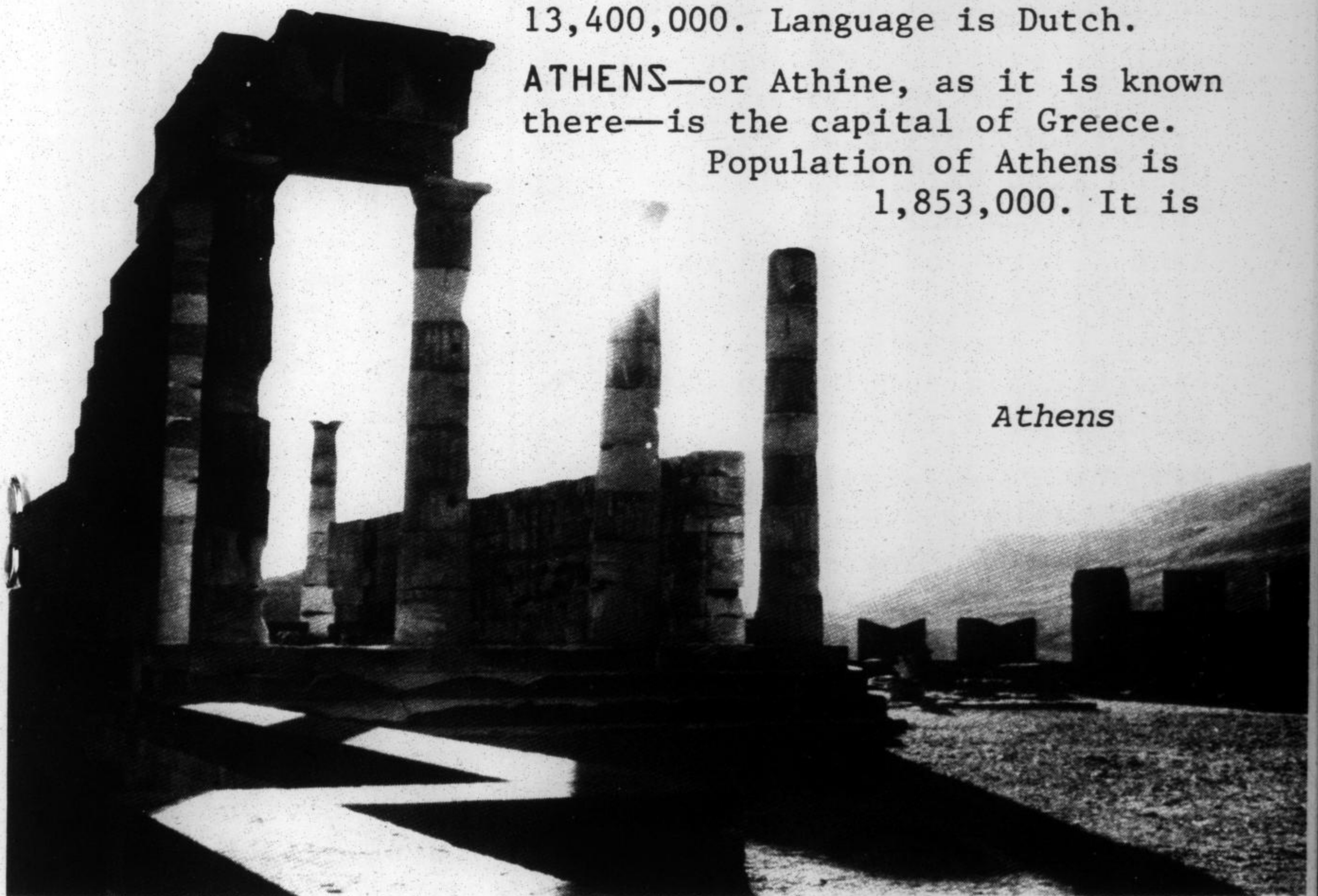
Let us move along into our semi-escorted tour via some background information on some of the many places we will be visiting. Sananda requested that we visit seven major capitals in order for him to project his desires, decrees and announcements through our physical force field. Those seven capitals are: Amsterdam, Athens, Berlin, London, Paris, Rome, Stockholm.

AMSTERDAM is the capital of the Netherlands, more popularly known as Holland. The population is listed as 870,000. It is one of the chief ports of Europe and

the center of the world's diamond-cutting industry. It was a fishing village until the 15th century, when it gained prominence as a trading center. Although it is the official capital, most government offices are in The Hague. A highlight of Amsterdam is its fifty miles of canals, dividing the city into seventy islands connected by five hundred bridges. Holland's early settlers are thought to be of Germanic origin, who even then had problems keeping the sea out of the lowlands. Dikes were introduced in the 9th century. Windmills covered the area by the end of the 15th century, pumping out the waters of the sea. During these times Holland often was under the rule of other nations. In the 15th century there was a unification within Holland, but more wars until the United Provinces was established in a treaty of 1648. The 17th century was the Golden Age of the Dutch civilization. Commercial supremacy and colonies were established. They became skilled craftsmen. A series of wars with France and England caused a decline. Belgium broke away in 1830. Population is 13,400,000. Language is Dutch.

ATHENS—or Athine, as it is known there—is the capital of Greece.

Population of Athens is 1,853,000. It is



the center of learning and the commercial headquarters, and a museum of antiquity. It dates from about 3500 B.C. It gained prominence in the 6th century B.C. Then it became a military power, gaining control over other areas. It became the cultural capital of the world.

Of special interest to us is the fact that Sananda lived here when he was the philosopher Socrates. Yolanda was a student of his then, named Penelope. So, it is a homecoming for both of them. Also, Hilarion lived here when he was the philosopher Plato.

Greece is a way station to the Mid-East. Greece codified its laws in the 7th century B.C., providing the concept of democracy. As with most other nations, wars changed it frequently. By the 4th century A.D., Christianity had made a firm impression in Greece, resulting in the Greek Orthodox Church. Thus, we will be visiting the headquarters for another major branch of Christianity, which also will include the Vatican (Catholicism), England (Church of England or Episcopalian), and Germany (home of Protestantism). Greece has a population estimated at 8,835,000.

BERLIN is more difficult to describe. It was the capital of all of Germany before the division of that nation into two political states at the end of World War II. For the purposes of this European Mission, Sananda obviously is still considering it as the capital of one Germany. But we will concentrate in this travelog on West Berlin.

Situated deep into East Germany, it is divided between the two political states by a twenty-eight-mile concrete and barbed-wire wall erected in August 1961.



Berlin

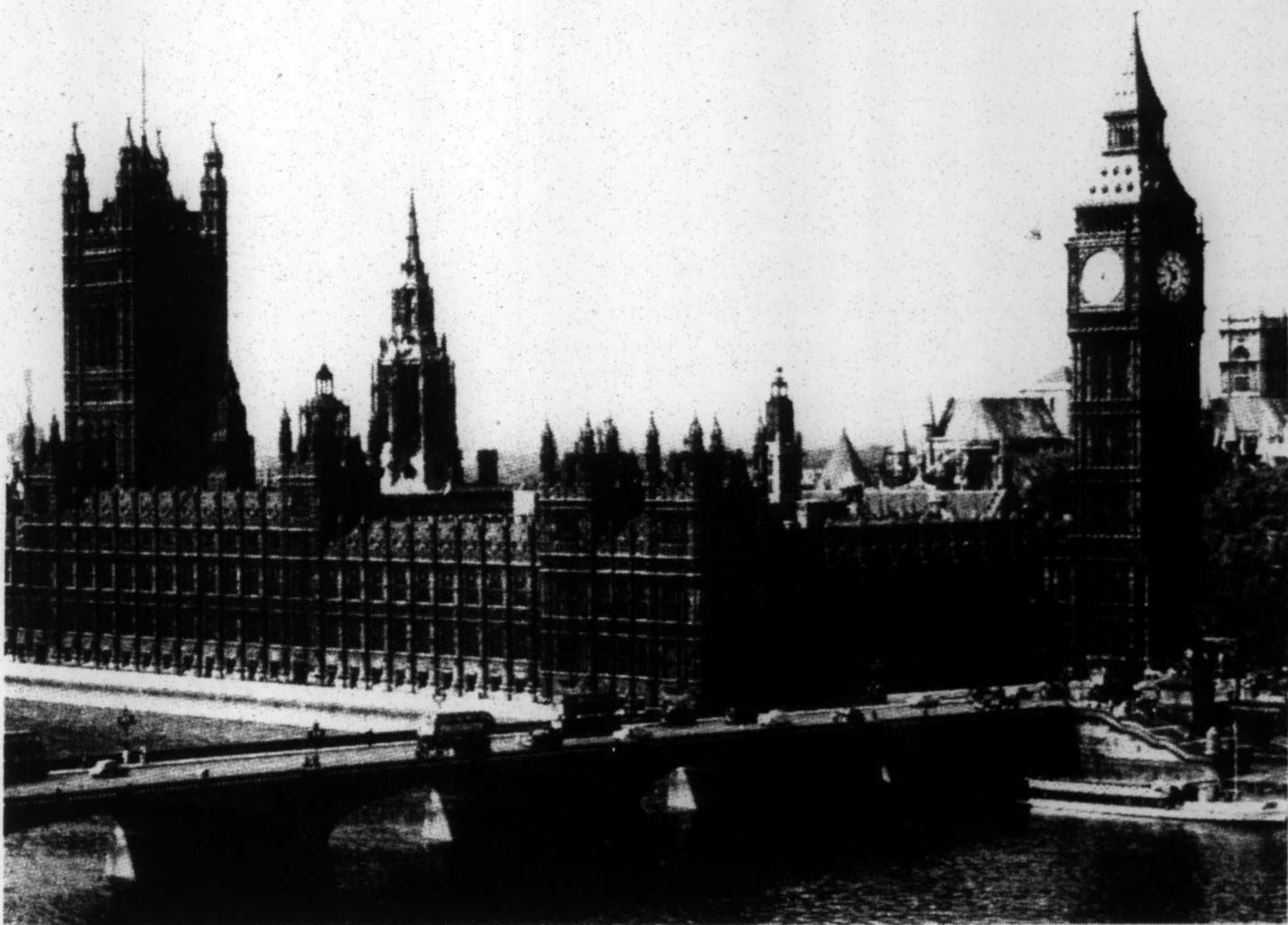
5,
It has a population of 2,200,000. The entire city is seven hundred years old. It became the capital of the German Reich established in 1871. After its almost complete destruction in World War II, it has been completely rebuilt into a modern and busy metropolis.

Germany was settled by Teutonic tribes, including the Franks and the Goths. The Franks were in complete power in 800 when Charlemagne was proclaimed head of the Holy Roman Empire. When this empire was divided after his death, Germany became a loose federation of feudal states, remaining so throughout the Middle Ages. Germany has an estimated population of 61,680,000. The capital of West Germany is Bonn.

Yolanda knows of at least one incarnation in Germany, during or just after Martin Luther's break with the church. A prominent male farmer near Frankfurt, she was one of his early followers, which cost her that incarnation.

LONDON is the capital of England. It has a population of 8,104,000. Although prehistoric Britons settled along the Thames River, London is usually thought to

Parliament, London

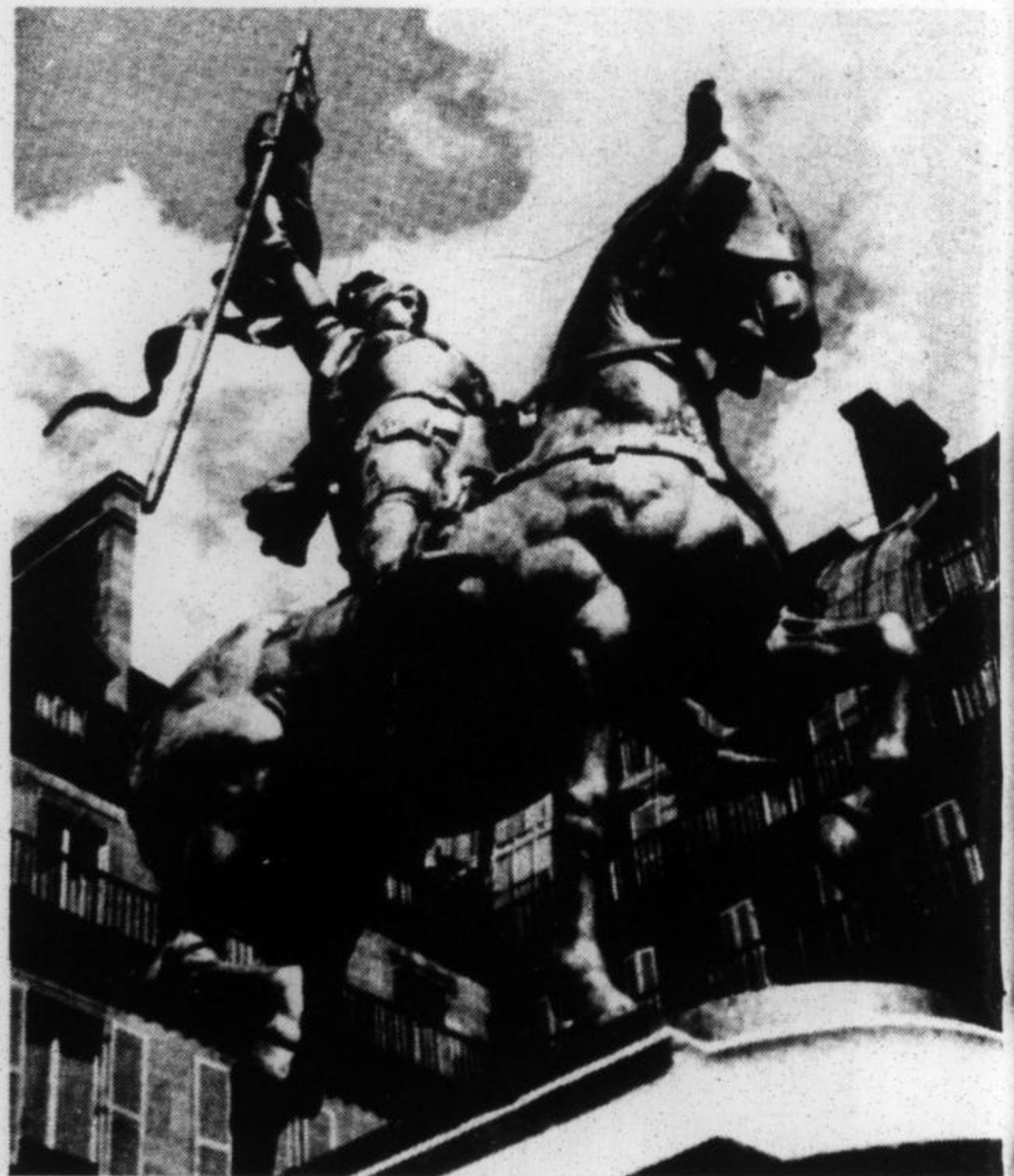


have been founded by 1st-century Romans. It became a Roman trading city; then a political capital with the coming of William the Conqueror. By the mid-17th century it had become the probable largest city in Europe, with about 500,000 population.

England is one of the nations comprising Great Britain, along with Wales, Scotland, Northern Ireland. Its recorded history begins with the Roman invasion of 55 B.C. The Romans, occupying most of what now is England, built roads and cities, and established some law and order. Their power gradually declined, and they left altogether in 410 A.D. There followed four centuries of wars between Anglos, Saxons and Jutes. The first English king was in 802. Its population is 55,700,000.

PARIS is the capital of France. It was founded more than 2000 years ago on an island in the Seine River. It was ruled by the Romans and then the Franks. Becoming a capital of a monarchy, it expanded in political and commercial importance. Much of the present beauty of Paris dates to the 18th century, when much was done to beautify it. In the 19th century it became known as the cradle of European revolution. Its present population is 2,810,000, with a metropolitan population of 9,250,000.

Inhabited by the Celts, southern France or Gaul became a Roman province about 50 B.C. with Caesar's conquest of it. The Roman domination ended with the barbarian invasions in the 5th century, resulting in a kingdom under the Franks, including most of France and part of Germany. Wars and kings caused much change for France, which became a republic again after World War II. Its population is 51,000,000.



Joan of Arc, Paris



St. Peter's Square, Rome

ROME is the capital of Italy. Roma, as it is called there, has a population of 2,656,000. It is generally believed that Rome began as a small village on the banks of the Tiber River in the 7th century B.C. By 509 B.C. it was well-enough established that the organized government of the Roman Empire was possible. By the end of the 2nd century A.D. the Roman legions had conquered not only all of Italy but also most of the then-known world.

Rome reached its greatest heights in the 1st and 2nd centuries A.D. Art, architecture and great public works were accomplished. Its decline began when the Empire was split into East and West during the 4th century, climaxing with the transfer of the capital to Constantinople. After the Goths and the Vandals plundered the city by 476 A.D., the Western Empire had ceased to exist. When Rome was established as the capital of Western Christianity, it once more began an ascent to glory. In the 15th century it was a center of the Renaissance. In the 19th and 20th centuries, ownership of Rome was an issue between the State and the Church. In 1929 a treaty was signed wherein a Vatican City state was created within Rome.

Italy was inhabited early by numerous warring tribes, including Sabines, Latins and Etruscans. These tribes eventually were dominated by a succession of kings. Much of the history of Italy is that of Rome.



Drottningholm Palace, Stockholm

Thus, much of its history, appeal and culture is linked with the Roman Catholic Church. Its population is 54,710,000.

STOCKHOLM is the capital and largest city of Sweden. Its population is 1,289,000. It is spread over several peninsulas and thirteen islands, being laced therefore with canals and bridges. Stockholm, meaning *log island*, was founded in the 13th century. Since 1523, when the Danes were evicted, it never has been occupied by a foreign power. The 18th century was a period of great development in architecture, government and culture.

Sweden occupies the eastern half of the Scandinavian peninsula, with Norway in the other half. It is noted for its advanced culture, scenic beauty, excellent cuisine, and such manufactures as furniture, textiles and leather goods. Its population is 8,000,000.

Please remember our theme: the coming of the I Am Nation under Sananda, where there will be no man-made boundaries, discriminating citizenship restrictions and laws; and where the two main laws will be *Love God* and *Love One Another*. So be it.

MAM #77A, for the week of April 27, 1975

E U R O P E A N M I S S I O N :

7 O T H E R C A P I T A L S

MARK: As I am the tour director, Yolanda wanted me to do these MAM #77 broadcasts. While preparing these, the inspiration was received to make MAM tape #79 (for the weeks of May 11th and June 1st), featuring highlights of what we, you and others as tourists, or as visitors from this and other planets, might include in sightseeing.

Actually, it can be considered a feature of our School of Living, one of the twelve schools of the University of Life or the twelve departments of Mark-Age, for it has to do with enjoyment and appreciation of life. As in so many things, we cannot participate in all activities, but we can share in those which others are involved in; especially when, as is so true in this instance, it is for the benefit of all of us, and of others.

We will be visiting at least thirteen countries; fourteen, if we include a little of New York City. They are: Austria, Belgium, Denmark, France, Germany (West Germany only, but we will be flying over East Germany on the way to and from West Berlin), Greece, Holland, Italy, Liechtenstein, Norway, Sweden, Switzerland and Vatican City. We also will be visiting seven other capitals: Bern, Switzerland; Bonn, West Germany; Brussels, Belgium; Copenhagen, Denmark; Oslo, Norway; Vaduz, Liechtenstein; and Vatican City.

BERN has been the capital of the Swiss Confederation since 1848. It was founded in the Middle Ages and maintains more of a medieval appearance than other cities in Europe. Its population is 170,000.

Switzerland is a nation comprised of various ethnic and cultural backgrounds. In ancient times the Helvetians and other Celtic tribes crossed the Rhine and settled along the lakes of this mountainous land. The Roman occupation lasted about four hundred years. Then came the Burgundians and the Franks. In 1033, Switzerland was reunited and incorporated into the German Empire. Its history was inseparable from that of Germany from then until the 15th century. It became inde-

pendent in 1648. Its population is 6,270,000. Its languages are German, French, Italian, Romansch. (Fortunately for us travelers, English is spoken by many of the citizens of the European nations.)

BONN has been the capital of West Germany, the Federal Republic of Germany, since 1949. Its population is 300,000. It is an important commercial center. This city on the Rhine River dates from Roman times.

BRUSSELS is the capital of Belgium. Its population is 1,077,000. It is an important banking, trade and transportation center, and is the headquarters of the European Common Market and the European Economic Community, as well as of the North Atlantic Treaty Organization. It has played an important part in international affairs.

Belgium, not much larger than the U.S. state of Maryland, is one of the most densely populated nations of Europe. It is a crossroads of the continent. It has an excellent port, one of the reasons it has been a battleground many times. After occupations by the Romans and the Franks, it was divided into several principalities. It began to take shape as a nation in 1363, due to a royal marriage. After a history of various ruling powers, it became the Kingdom of Belgium in 1830. Its population is estimated at 9,676,000. Its languages are Flemish in the north and French in the south.

COPENHAGEN is the capital of Denmark. Its population is 1,400,000. It had been known to the Vikings and to fishermen for years as the Haven. Its founding is dated in 1167, when a citadel was situated there. Occupied by Britain, Sweden and Germany, it has been a crossroads of northern Europe.

Denmark includes the Jutland Peninsula and about five hundred islands. It has been a nation for more than one thousand years. In the Middle Ages the Danish Vikings made many European conquests. The coming of Christianity marked a turning point in its history. In 1849, a free constitution marked the end of absolute power of the kings. Its population is 4,900,000.

OSLO is the capital of Norway. Its population is 490,000. It is Norway's leading industrial and cultur-

al center, and a chief port. Its history dates back nine hundred years.

Norway occupies the western part of the Scandinavian peninsula, from as far south as opposite Scotland to beyond the Arctic Circle. The early history of Norway was shaped by the Vikings. They brought about a national unification under one powerful leader. Christianity was established there in 1030. Since 1814, Norway has been a constitutional monarchy. Its population is an estimated 3,893,000.

VADUZ is the capital of Liechtenstein. Its population is 4,000. One of the tiniest capitals in the world, it is on the Rhine River.

Liechtenstein is a small principality located between Switzerland and Austria. It was established as a part of the Holy Roman Empire in 1719, then was in the Rhine and the German Confederations, becoming independent in 1866. Its principal local industry is the production of finely engraved postage stamps. Its area is only 61 square miles. Its population is an estimated 23,000.

VATICAN CITY is the world's smallest nation, with an area of only one hundred and eight acres. Its 890 population is governed by the Roman Catholic pope and his cardinals.

Yolanda was a Roman soldier when the Apostle Paul preached there, and was converted to Christianity by Paul. This set a pattern for this lifetime when, as Pauline, her first master teacher was Hilarion-Paul the Apostle, who announced she was to be an instrument to help bring about Jesus' Second Coming. Also, Nada incarnated as a Syrian and was elected as Pope Constantine, from 708 to 715; who tried to bridge the split between the Greek and the Roman churches.

AUSTRIA is another nation we will be visiting. After centuries of invasions by Romans, Goths, Huns and various barbaric tribes, Charlemagne brought a degree of stability when he made Austria his eastern frontier in 799. In 962 it became a part of the Holy Roman Empire of the German nation. During the Napoleonic era, the Holy Roman Empire passed away and was replaced by the Empire of Austria in 1806. In 1918 the

Republic of German-Austria was proclaimed. After World War II the Austrian Republic was restored. Its population is estimated at 7,371,000. The population of its capital Vienna, not expected to be on our tour, is 1,640,000. For a thousand years it was the capital of the far-flung Holy Roman and Hapsburg Empires.

Among other cities we shall be visiting during this European Mission are these, given by their countries. Austria: Innsbruck. Belgium: Antwerp. Germany (West): Frankfurt on the Main River, Heidelberg, Cologne, Hamburg. Greece: Daphin, Corinth, Olympia. Italy: Pompeii, Sorrento, Capri, Naples, Florence, Padua, Venice, Cortina. Switzerland: Geneva, Lausanne, Montreux, Zurich, Lucerne, Basel.

Three issues of *MAIN* are devoted to this extremely important and exciting European Mission. This first one, for August, covers only the "Background and Preparations" since January 1972, when Sananda first introduced the subject of a European tour. September and October issues contain Sananda's decrees and communications and our experiences on the tour.

European Mission is also the title of a special C-90 cassette tape @ \$6.00. It features an in-depth talk by Yolanda and Mark about the mission, giving highlights, events, other information, and including anticipated on-the-spot talks from various cities in Europe.

MAM #77B, for the week of May 4, 1975

RESPONSIBILITIES OF MAM BROADCASTERS

YOLANDA: Specifically Sananda instructed us not to give the exact itinerary of our travel plans to any but the MetaCenter staff. He explained that the power of the light projectors in the MAM network had reached such a high level, and that our abilities (Mark's and mine) to receive thought energies were so pure, that anything outside of his personal and hierarchal

instructions was to be protected and shielded from our conscious receptivity. We will be able to share those instructions and decrees from his master ship #10 in our next two issues of *MAIN*, upon our return.

This may seem a backward kind of compliment to you, MAM broadcasters. Nevertheless, it indicates how strongly linked we are, and how powerful our decrees are in reaching the race consciousness. Your major part in the European Mission will begin when our physical anchoring of it has ended. That is the hierarchal chain of command.

However, we do ask of you that for the entire period of our European Mission you join with us daily in such general thoughts as are at the end of this tape. Project to the peoples of the entire European continent, linking with those MAM broadcasters and Family members living in England, West Germany, Denmark, Sweden, Norway, Switzerland, Scotland, Italy and any other nation there, past and present and especially future. For our Family membership now includes those in all of those nations, and has included those in such other nations as France, Belgium, Holland and Spain.

We also ask that you keep sending your thoughts of love, blessing, protection, good travel, enjoyment of this mission, and all other good thoughts to us during the mission. Since we already will be in Europe when you play this tape #78, we can tell you that we will have left Miami via plane on Wednesday, April 30th. After some independent European sightseeing, we will join the escorted Rainbow Tour of twenty-two days, including travel time from and to New York; although we will be with the land tour only twenty days. Remember that there were just twenty-two focuses in the original linking-of-lights program that actually initiated the MAM network. After that tour we will spend three weeks of independent travel. We will return via direct flight from London to Miami, taking 9 hours and 20 minutes, on Wednesday, June 25th, arriving after exactly eight weeks away from Miami; and will be there in time for our regular Wednesday night hierarchal meditation. Sananda and his master ship #10, with its crew of light workers, will come back with us from London. Isn't that a wonderful climax to a magnificent Euro-

pean Mission? You can help us visualize the following:

* Visualize the people of Europe being receptive to whatever Sananda and the Hierarchal Board will be projecting to them, of the hierarchal plan and program and the Second Coming, in general; and of the mass educational program concerning these things, in particular.

* Visualize the Christ light flowing directly to all from Spirit and via Spirit's agents of the Hierarchy, and especially via the Christ Self of each one.

* Visualize the European Mission as being completed successfully, in every aspect.

* Visualize all projections from the Hierarchy as being completed successfully.

* Visualize the safety, in all ways, of Mark and me throughout the entire trip, from Miami back to Miami.

* Visualize the successful completion of this major hierarchal project, so that succeeding phases, especially the forthcoming opening of the Eastern hemisphere, then the linking of East and West, can be achieved on schedule and with minimum problems.

* Finally, give thanks to Spirit and all agents of Spirit, on all planes, for the all-important assistance given in making this European Mission a complete success; not only during the mission itself, but for all that went into it in preceding phases of the program and months. Be sure to *include yourself* in this, as such an agent. Thank you and blessings.

MAM #78A, for week of May 11, 1975

EL MORYA TRANSFERS NEW POWER TO MAM BROADCASTERS

MARK: Now is the time for a special communion with all of you, our co-broadcasters in the Mark-Age Meditations network. This will put into operation for the first time the new level of transfer of energies Yolanda told us about during the previous broadcast. That is, we will apply the information Sananda gave us on April 23, 1975 concerning how we

now can project energies, spiritual thoughts, and requests for spiritual awakenings and actions, to others. (See page 18 in the "Communications" section of this issue.)

We will be able to give you much more in the way of how to use this newly instituted spiritual method of reaching people, and of effecting program works, upon our return from the European Mission. For then we will have had adequate opportunity to have it demonstrated through us by Sananda and others in the Hierarchal Board, and will have utilized it ourselves, throughout Europe. We will have seen numerous manifestations of this mental relay and this transfer of energies and thought projections.

This MAM program is being recorded a week prior to our leaving for Europe, and only the day after Sananda gave us this hierarchal announcement about the transfer of energies. So, this is the first time we have attempted to use it. And what better way to do so than in a MAM network experiment with all of you participating?

THE EXPERIMENT

First, though, the idea comes to me that Yolanda and I will start this experimental transfer-of-energies-and-thoughts broadcast by bringing you into joint participation two months before the week for its broadcast. We shall do so by visualizing you, in advance of our even starting for the European Mission, as engaging in some of the projections with us while we are on the actual tour.

We shall do this by projecting ahead in time, in the usual sense of considering such, so that we establish the spiritual contact with you now that will alert your Christ Self to join with us for those projections at the time we actually are calling upon you to be with us mentally and spiritually for that work.

Here is how it will work. First, know that time in the higher planes is not as we know it here on Earth. Thus we can reach ahead to a specified time period by establishing a mental pattern that is to become effective at that particular time. This can be set so as to trigger off an event in other peoples' conscious-

nesses as well as our own, so long as we do not violate spiritual principles in doing so; that is, we must be careful to make it part of our thoughts that this is not to take away others' freewill choices.

Then we call upon the Christ Self of each one to whom we address the project, in this case the transfer experiment, to ask that I Am Self to join with all of us at the times we call upon them for the desired projection, whatever it may be that is decided upon at that future time.

In this way Nada-Yolanda and El Morya-Mark now call upon the Christ Self of each MAM broadcaster and other agreeable ones who will hear this broadcast and who at that time consciously will agree to participate in this initial experiment, to give your total MAM projection power to what we call upon you to assist the Hierarchy in effecting for the Second Coming program.

As we make this call to you, we know your Christ Self already has received it. For not only are we all linked in the Christ Self state, but we are especially powerfully united in this MAM network and Mark-Age Family.

Your Christ Self will join with us at the time we make the actual call; which will be in the future from the time I make this broadcast, but which will be in the past as you hear it. For your Christ Self already will have participated in a sizeable number of these transfer projections in the seven major and five minor capitals of Europe, and in numerous other places; will have joined Sananda, Nada, El Morya and others of the celestial and the etheric realms in putting into motion hierarchal announcements, decrees and actions desired by the Hierarchal Board.

Your Christ Self knew in advance if you would be receptive and willing to participate in this broadcast when you consciously come to know of it. How? Because you already have made spiritual commitments as a MAM or Family broadcaster, and have worked with us (most of you, anyway), on other MAM broadcasts. Thus, you are a willing participant in whatever your Christ Self and the Hierarchy wish to enact with and for Spirit. And it is really your Christ Self that you are interested in becoming one with and demonstrating, isn't it?

As you may recall from the hierarchal teachings through Mark-Age and others, the mortal consciousness is but one-tenth of the total Christ consciousness. Thus, your I Am Self does many things of which your mortal consciousness or self is completely unaware; and without need for the mortal self's permission, particularly when the mortal self has asked and strives for the Christ Self's will to be done. So it is with all of us, isn't it?

In this way of the Christ Self of each MAM and Family member, as well as other light workers now and to come, joining together for whatever purpose Spirit and the Hierarchal Board wish to transfer or to project or to enact for the Second Coming program and the upliftment of all on Earth, will we become a far more powerful unified and coordinated team of light projectors.

It is not necessary that we know consciously each time our Christ Selves are called upon in this manner. But it is essential to this special teamwork that we have given our conscious permission for the mortal selves to be used in whatever way Spirit and the hierarchal leaders desire, even if we do not know consciously of it.

This is the way Yolanda and I have worked in these interdimensional projections for many years, as many of you know who have been with us. We are not told in many cases just what our force fields are being used for, what projections and energies and actions are being effected through us, when we are at headquarters or anywhere else such as on various hierarchal tours. But it is known that we have given freewill permission for such cooperative works, and thus do not have to be asked each and every time.

So it can be with you. This is your first conscious opportunity to give that permission and to participate as concerns this transfer experiment. Or, for you to accept that which your Christ Self already has done, knowing you would agree with it when it came to your conscious attention.

Have you given already your conscious permission to what you have heard so far? Does it sound right and good to you? What are your inner reactions and feelings now, even before you have heard all of this experiment?

HOW TO CHECK YOUR PARTICIPATION

Here is one way you might be able to tell to what degree your Christ Self will have worked with Sananda, Nada and El Morya, as well as others of the Hierarchy, in the special European Mission projections. First, what were your reactions to the European Meditations MAM broadcasts you heard before and during our actual physical presence in Europe? If you were an interested participant in that aspect of the mission, you certainly were eager to do all you possibly could to make it a tremendous success. Many of you did tell us so before we left for Europe, and we know many more of you felt that way. So, you already were one with us for whatever you could do to help Sananda and the rest of us in this Mark-Age Family and MAM network project.

Second, and this will be the one which should or could give you intense satisfaction, you might have had significant spiritual and other experiences during the European Mission. Perhaps you were aware then that it had to do with your being a part of that mission in some way. Perhaps you were aware of experiences but did not know what they meant. Perhaps you shared them with others of your family or group, or told us at MetaCenter about them. We hope you made special note of them, either in writing or indelible memory, so you now can go back to them and see what additional revelations you can get from them.

When you read the next two issues of *MAIN* magazine, *European Mission II & III*, which will give details of our trip, especially the hierarchal activities and decrees, you will be able to examine your experiences of that period from April 30th, when Yolanda and I arrived in New York City, to June 25th, when we arrived back in Miami with Sananda and his master ship #10. In that examination you might well see how your experiences related to what was happening with and to and through us in Europe. That could be a time of great spiritual satisfaction.

SHARING EXPERIENCES OF THE EXPERIMENT

We have asked the staff remaining at MetaCenter and The Sanctuary to keep a record of their experi-

ences which are pertinent to the European Mission, while we are in Europe. They may share them with you for one or two MAM broadcasts after our return and our learning of them. Perhaps we could publish selections of your and others' experiences in a special section of a future *MAIN* magazine devoted to meditation experiences during or concerning the European Mission.

We could have alerted you in advance to the actual trip so you could make notations of your experiences also. We could have done so, had it occurred to us. But it would seem that such was not to be the case, for it did not come to our attention to do so until just now. Therefore, we take that to mean it was withheld until now so you would not know of it until the trip was nearly or fully completed, and in that way would be a participant in this transfer experiment. Also, in this way you were not tempted to make up experiences, were you?

If you have had such experiences and have not relayed them to us already, we really would like to hear about them now. The European Mission is not over by any means, for any of us or you or the world. This analysis by you can be an important part of continuing to make manifest the manifold ramifications of what was started during that hierarchal project. It thus would make more deeply entrenched and longer lasting that which was initiated, and now must be amplified throughout Europe, as well as throughout the world.

So, will you let us know of any experiences between April 30th and June 25th which you know are pertinent, or which might be pertinent, to the European Mission? This is part of the transfer experiment and the analysis of results.

From this we will be able to ascertain consciously some of the many aspects which would be applicable to sharing with others and to future hierarchal projects of this nature. We say we can ascertain consciously, for of course it already is known by our Christ Selves and the Hierarchal Board; which is by far more important than our conscious understandings.

Let us go into meditation with this thought. If you were part of the Mark-Age Family, and especially the MAM network, your Christ Self was aware of this trans-

fer-of-energies-and-thoughts project before it actually came into effect.

Your Christ Self gave permission to be called upon by the Hierarchal Board in general, and by Sananda and Nada and El Morya in particular, for cooperative and coordinated action during the ensuing projections.

Your Christ Self participated in the transfer projects when called upon to do so. Your Christ Self did, or tried to do, what was possible to give you some manifestation or experience or thought as to what was occurring in which your Christ Self participated. Your Christ Self now will give you inner and outer verification of such participation, if any.

You and your Christ Self are one; always are one; and therefore will work as one more effectively henceforth as a result of this transfer experiment. If this is what you so desire, as we desire it for all of us, please signify your conscious pleasure and acceptance and dedication by saying with us: *so be it*. On behalf of Sananda, Nada and all those who participated in this, as well as those who will benefit, thank you. God blesses you.

This actually is going to be an experiment for many of the things we will do in the future in these MAM broadcasts. For we will have to work on many events that have not given any inkling yet of manifestation upon the Earth plane. We will have to help bring them into effect.

As Sananda told us in explaining the five divisions of Mark-Age, one of which is the Mark-Age Meditations network, this can be the most powerful tool we can use in Mark-Age, these MAM power broadcasts, in helping to establish the Second Coming; actually, to bring it forth. How? Through our projections for it.

We have worked on this in the past. And now is a good time to add this thought to what we have done and have explained to you, about how we all worked together in advance of the actual event for the European Mission project of transfer of energies and spiritual thoughts.

In this way let us also. as we go into meditation, project for the Second Coming. We look ahead; we see it already as having manifested in our thoughts; and therefore it must come to manifest on Earth. So be it.

MAM #81B, week of June 29, 1975



MetaCenter

North
East
West
South

ON WEDNESDAY, JUNE 25th, PRECISELY ON SCHEDULE, Yolanda and Mark, escorted by Sananda and the crew of ship #10, arrived in Miami from the European Mission. The tour was beyond expectations, with no problems whatsoever.

Sananda stated on July 2nd that he had completed current attention on Europe as of that date, and would concentrate on light-body anchoring at Mark-Age in July and August while ship #10 would be anchored over the Miami area.

Full details of the European Mission are in the next two issues of *MAIN*: September and October. Donations specifically given for the trip so far are within \$1500 of the total cost of this important hierarchical mission. To those of you contributing in this manner: thank you, again!

HUNDREDS IN FRANCE WITNESSED UFO SIGHTINGS during time Mark and Yolanda were in Europe. On May 1st, the day they departed on the QE2 for the mission, the French press reported a mass sighting. Following their six days of projections in Paris from May 30th, the paper *Aurore* gave an account of several witnesses viewing a bright white, glowing UFO at the same time from several sections of that city. Sananda's message is on page 12 of this issue, MAM #75B.

IN SEPTEMBER SANANDA'S SHIP #10 WILL CIRCLE Earth and then anchor over the Eastern hemisphere for six years. Zan-Thu will be the first Mark-Age staff member to be in that area, when she visits her son and his family in Japan, and takes a three-week escort-

ed tour to such places as Hong Kong, Singapore, Malaysia, Hawaii, all within a forty-five-day period from late September to mid-November. Thus Sananda will be able to focus special energies into the Eastern hemisphere through Zan-Thu's force field while he is anchoring there.

"OTHER WORLDS, OTHER UNIVERSES" is a new book edited by Brad Steiger and John White (Doubleday, 1975, \$7.95). Subtitled *Playing the Reality Game*, it is a selection from sixteen authors, with material also by Steiger and White, attempting to aid in one's expansion of consciousness.

We will review this book in *MAIN* soon, but want to call your attention to it now. John White, formerly associated with astronaut Edgar D. Mitchell, for whom he also edited the textbook *Psychic Exploration: A Challenge for Science* (Putnam, 1974, \$17.50), had asked us for permission to use excerpts from our book *Evolution of Man*. These excerpts appear on pages 35-47 in the "Other Worlds: The Prehistory of Earth" section of this book.

NEW OPTIONS IN RELIGIOUS EXPERIENCE class at Florida International University in Miami requested a two-hour program by Mark-Age. Our staff members Philip, Theon and Marvin, assisted by Kathy for the questions-and-answers period, conducted the class on June 5th.

One of the members of that class wrote a paper on our material and arranged the talk. His professor and many classmates were quite interested in the presentation.

A PROFESSOR IN THE DIVISION OF UNIVERSITY EXTENSION of the University of Rhode Island wrote in April 1975 for complimentary copies of and information about our work, saying that he has more than 175 students in several occult classes in Rhode Island colleges and high schools whom he wants to be familiar with Mark-Age; as well as his making a favorable review in several articles he is writing on the occult and the media.

This is another example of a growing number of professors and teachers enquiring about and using Mark-Age

MAM PROGRAMS SUMMARY

TAPE	WEEK	SUMMARY
76 A	4/13/75	<i>Proper Harvest Time.</i> Yolanda presents celestial-etheric views on proper timing for manifestation of hierarchal plan.
76 B	4/20/75	How to open yourself to I Am communication during meditation periods, as demonstrated by Mark.
77 A	4/27/75	<i>European Meditations.</i> Background information by Mark on the seven major capitals of power and influence for Sananda's projections.
77 B	5/4/75	<i>European Meditations.</i> Background information about the seven other capitals Mark and Yolanda would visit.
78 A	5/11/75	<i>European Meditations.</i> Yolanda shares channeled instructions from Sananda regarding preparations for this trinity demonstration in Europe.
78 B	5/18/75	MAM projections since Easter 1972 aided in opening of University of Life this spring. <i>See</i> May 1975 issue of <i>MAIN</i> magazine.
79 A	5/25/75	<i>European Meditations.</i> Many agents of Spirit on this plane and on inner planes were involved in preparing such journeys to foreign or unknown areas. Mark.
79 B	6/1/75	<i>European Meditations.</i> Highlights of places of interest available in all major cities of Europe trip, described by Mark.

TAPE	WEEK	SUMMARY
80 A	6/8/75	"Create a symphonic harmony," Sananda instructed Mark and Yolanda, "while on the European Mission."
80 B	6/15/75	Memorials to the past must now give way to the monuments to be built in the present for the new I Am Nation. Yolanda.
81 A	6/22/75	Sananda transferred new mastership level of light to Nada-Yolanda; she, to El Morya-Mark; they, to Mark-Age staff; all of us, to Mark-Age Family; and all together, to Earthman evolving to Christ level.
81 B	6/29/75	Mark transfers power of the trinity demonstration to all the MAM broadcasters and Mark-Age Family members for the future Earth changes to be made manifest through MAM network.
82 A	7/6/75	<i>European Meditations.</i> Mark gives thanks in advance, before leaving for Europe, for successful completion of Sananda's instructions to Mark-Age Unit #7. Demonstrates one of the spiritual techniques of mastership: <i>realization.</i>
82 B	7/13/75	<i>European Meditations.</i> Made two months (to the day) after <i>realization</i> of success of the European Mission, Yolanda and Mark gave thanks on their <i>return</i> for a successful and safe journey.
83 A and	7/20/75	<i>European Meditations.</i> In two parts, for two consecutive weeks, Mark summarizes highlights of the European Mission, Yolanda injects excerpts of Sananda's communications during Mark's chronological narration.
83 B	7/27/75	

METACENTER NEWS (continued from page 42)

materials for their classes. It will increase tremendously as our University of Life division expands and is able to provide additional teaching tools and guidelines for such classes.

"PLAN A NATION" COURSE for the University of Life was published and released on July 1, 1975. Those of you who already have received your copy surely are pleasantly surprised at the professional presentation, not only of the material and the questions but also of the quality paperback format.

We hope all of you will want your own copy of this first edition of only 1000, thus joining us in presenting this for the mass educational program of the Hierarchal Board's Second Coming plan. It is available only from Mark-Age. The response to this initial course will determine to a major extent how soon other material will be released for the Mark-Age University of Life.

GUIDELINES GIVEN TO YOLANDA & MARK BY SANANDA on July 5th, after anchoring master ship #10 over the Miami area, included the information that our co-directors will not be making any other trips away from headquarters in 1975. (See page 7 of this issue.)

Instead, Sananda was instructing Slippery Eel (the Seminole Indian in the astral who had worked with us to secure The Sanctuary and Healing Haven Research Center) to submit new evaluations and reports about future I Am Nation properties.

After September, when the light-body anchoring projects have been completed in July and August, Sananda will advise us concerning any new developments for this expansion.

So, the staff remains constantly available and ready for whatever work may be required to obtain these properties for Sananda's new headquarters during the next twenty years. Our thanks to all of you who continue to make contributions specifically for this coming expansion. The I Am Nation expansion fund is growing steadily, but still is far from sufficient.





MARK-AGE Meditations

- *Worldwide* linking of light workers and groups meditating on same *weekly* topics.
- Inspired and *coordinated interdimensionally* by the spiritual government of our solar system for planning and planting of the *new I Am nation* for the Second Coming.
- Topics include: spiritual analysis of current *personal* and *world* problems, explanation of *spiritual principles* and actions, ways to aid and to lift man of Earth, *Second Coming* of Jesus and of each person, *UFO* reports and the spiritual space program, latest *hierarchical plan* news and information.
- Not controlled meditations, but lead-ins for *planetary projections* of power, light, love and *proper images* for desired goals.
- Tapes can be played any time of *day or night*, any number of times; most are suitable topics for *indefinite period*.
- Excellent aid for *existing groups* or for the *beginning groups*.
- Two programs of *14 minutes* each are on each cassette. (No reel tapes.)
- Only \$5.00 for each cassette containing *two programs*, for two meetings.

MARK-AGE MEDITATIONS
327 N.E. 20 Terrace
Miami, FL 33137