

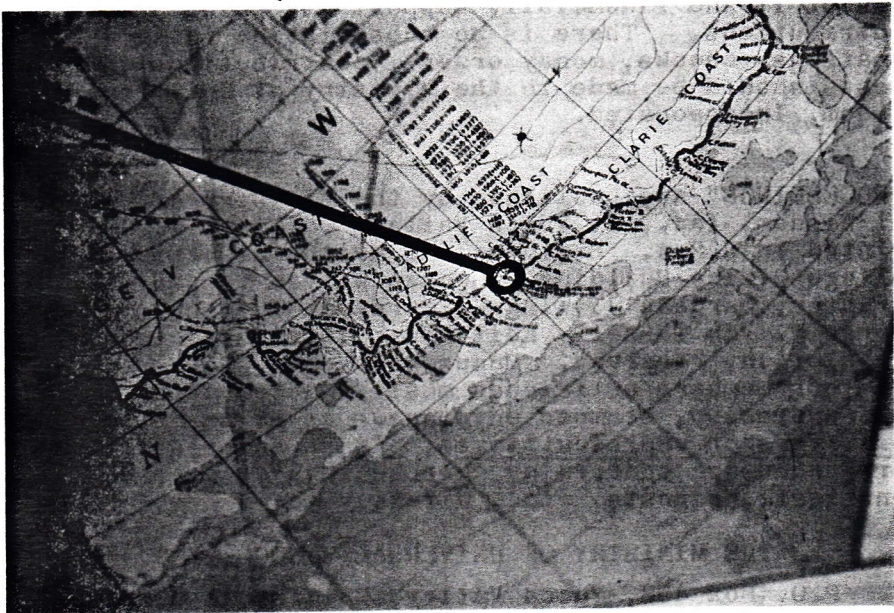
Proceedings

OF THE
COLLEGE OF UNIVERSAL WISDOM
YUCCAVALLEY, CALIFORNIA

A BRANCH OF THE MINISTRY OF UNIVERSAL WISDOM, INC.

A Non-sectarian and Non-profit Organization
for Religious and Scientific Research.

VOLUME 10 JULY - AUGUST - SEPTEMBER - 1975 NUMBER 9



PROCEEDINGS
OF THE COLLEGE OF UNIVERSAL WISDOM
Yucca Valley, California

A branch of the Ministry of Universal Wisdom, Inc.

Volume 10 July - August - September - 1975 Number 9

CONTENTS

THE BERMUDA TRIANGLE	page	3
THE "INTEGRATRON"	"	8
UNIVERSAL POWER	"	9
CHANGE OF ADDRESS	"	13
FRONT PAGE PICTURE	"	14
SCIENTISTS CAN BE SO WRONG	"	15

The "Proceedings" is mailed free to those people who request it and financially support its printing by contributions. There is no subscription rate. All donations, checks, money orders, contributions and bequests should be made to the Ministry of Universal Wisdom, Incorporated.

"PROCEEDINGS" are published by the Ministry of Universal Wisdom, Inc., at Yucca Valley, California. Printed in U.S.A. Business and Editorial offices: College Office Building. George W. Van Tassel - Director; Darlene J. Wing - Secretary-Treasurer; George W. Van Tassel - Editor. All rights, including translation, reserved. Manuscripts and photographs from our members or friends must be accompanied by a self-addressed, stamped envelope. As we do not employ solicitors or representatives, please address all correspondence concerning "Proceedings", contributions, donations, bequests, etc., directly to:

THE MINISTRY OF UNIVERSAL WISDOM, INC.
P.O. Box 458, Yucca Valley, California 92284
U.S.A.

OUR 21st YEAR In Publication

THE BERMUDA TRIANGLE

The "Bermuda Triangle", the "Devil's Triangle" and other references to the area near Bermuda is receiving much attention lately in motion pictures and national magazines.

Most of the events pictured, and written about, end up with the same old question of "what happened to the ships and planes that disappeared? Some authors assume that the U.F.O.s caused the phenomena without one iota of true evidence in that direction.

In the first place there are 12 of these areas known to exist in the world. Researching this as a hobby, over the last 20 years has established several things to us.

1. The U.F.O.s have nothing to do with it.
2. The forces that cause it to occur are intermittent and unpredictable at present.
3. The Navy Department and Advanced Military Research know more about it than anyone except us, and they are not going to tell anybody.

There are some things about this phenomena that we cannot write about; but we are going to offer you more than you have read before.

The pure creation of everything out of perfect Universal Mind started matter and energy, as contrasting manifestations of duality in all things. Each creation has within itself the ups and downs and the positive and negative polarities of electrical law; the north and south of magnetic laws, and the good and bad of the laws of order and conscience.

The earth, being a speck of matter in the universe, was once created from the primary lines of energy, in space, and established as a crystal dodecahedron with twelve facets.

The laws of perfection are exact in crystallography, showing the order of creation from intelligence beyond our human comprehension. The crystals of each chemical substance have a separate and definite set of angles. In all crystals of the same substance, the angles

between corresponding faces are constant.

Twelve facets - twelve hours - twelve months - twelve disciples - all come from a system of order.

Since silicon is the most abundant element found in the earth (outside of oxygen which is a gas), the earth would logically have been created as a silicon crystal. Silicon in crystal form is quartz and quartz crystallizes in equal divisions of 6 sided pyramids. This is 12 facets on both ends. The six side facets are prismic connectors of the two ends due to the volume of material present.

So we have 6 facets in each hemisphere of the earth - six facets on each end of a silicon crystal and the fact that the most abundant element of the earth's composition is silicon Hang on "Bermuda Triangle" lovers, we are coming to that!

Quartz, the pure crystalline form of silica, also shows other interesting potentials. Electrical currents come from a quartz crystal under pressure. This is referred to as the piezo-electric effect. Quartz crystals, sliced into thin wafers control frequency in radio and communications.

Since the structure of the earth is under changing pressure, it resolves that intermittent reactions can occur with influence from the sun and other planets. Now note that the lines and the nodes of the world grid seem to manifest reactions relative to a time influence, not yet calculated; also it is obvious that atomic tests above, or below, the surface can have long range results in both atmospheric and geophysical happenings.

Years ago Dr. Kowski, and engineer Frost, demonstrated gravity nullification in the Nessertsaddin Werke (Laboratory) at Darredein, Poland. They caused a 25 kilo (57 lbs.) weight to levitate with the application of constant wavelengths over a quartz-resonator. A clear quartz crystal became cloudy and expanded in size. The quartz crystal never became clear again and remained in its expanded state. Apparently the electrons moved out of the molecule band and could not return and thus the whole structure of the crystal was changed. The question of the clear quartz crystal not being transparent anymore was explained through the

expansion of the crystal. In spite of the expansion of the quartz crystal of 5.2 mm length and 1.5 mm profile to 10 cm gross, it retained its original shape.

The reason I am bringing out this information is to validate our conclusions that the node of the crystal structure of the earth at the point of the "Bermuda Triangle" becomes active at intervals and levitates ships and planes into space. This is why no debris has ever been found of the lost ships and planes, either in the water, or on the bottom of the ocean at this location.

The clouding in the quartz crystal, when it raised 57 lbs., could also account for the last radio message from a flight of 5 Navy aircraft that disappeared on December 5, 1945. They radioed at 3:45 P.M. that they had no idea where they were, that "everything looks strange, even the ocean. It looks like we are entering white water". What they described was a condition of molecular change in both the ocean and atmosphere. The visual ionization of the atmosphere left the pilots with no horizon, or direction, as their instruments failed to work. This foggy condition was equivalent to the cloud effect that occurred in the quartz crystal when gravity nullification effects occur where moisture is present.

Gravity holds things together. Antigravity separates. Further expansion of the quartz crystal would have caused it to disappear - or be converted from matter back into energy. This happened as a side effect in a quartz crystal we were lapping to the final precision measurements of the square of the lines of primary energy. When the exact dimension was reached the quartz pyramid vanished suddenly. No sound - no light - no heat - no nothing, and no place for it to go. This is what occurs when ships and planes reach a resonance of the frequency of their molecules and an energy time constant.

We have recently taken part in producing a motion picture about phenomena for a German producer that, we understand, will be released in five languages. Through this association we became friends with Dr. Frank Lang of Delta Productions, Ltd., who is now planning a motion picture on the "Bermuda Triangle". They have purchased the eight-man submarine that was used in

the movies made with Lloyd Bridges. Frank was here a few weeks ago and I had the opportunity of seeing many color pictures they had taken from the air over the "Bermuda Triangle". Under the clear water is a long white line which we believe to be one of the world grid interlace edges of a silicon earth crystal facet.

The only other place we know where the white line appears is on land in Ecuador in South America. Interesting - one of the 12 pentagon grid nodes is also in that area! We wrote in a past "Proceedings" about this white line, but will use the data here again to correlate the grid with the white line in the "Bermuda Triangle".

The white line in Ecuador causes a person to feel weightless as they come close to it. Secretly it was called "the only place of nongravity on the earth". Ecuadoran natives in the area shun it as tabu and tell of animals that run onto the white line being instantly whisked into outer space. It seems that a form of security by some authority keeps people who try to investigate this phenomena out of the area.

Dr. Lang offered your director an invitation to be one of the eight men aboard the submarine that is to explore and make a new factual undersea motion picture of the "Bermuda Triangle". I turned the invitation down because of the risk involved, since our work here to finish the "Integratron" is most important. I would have enjoyed being a part of this thrilling adventure but responsibility is greater than desire.

In his book, "Harmonic 695", Captain Bruce Cathie calculated the grid harmonics for the "Bermuda Triangle" area on the date and time of the Navy plane disappearance a quarter of a century ago. His calculations relative to the sun at the latitude of $26^{\circ} 20'$ north and longitude of $78^{\circ} 25'$ west, established that there was an unstable set of harmonics at that point in the world grid system at the time of that particular incident. His conclusions were that, "all the aircraft involved in the disappearance were either completely disintegrated, or moved through space time".

Most disappearances, in any of the 12 known areas of the world seem to occur only at periodic intervals. In the "Bermuda Triangle" most of the ships and planes

have vanished between November and February. This is the winter solstice time relative to the sun.

Evidence that a space-time continuum is involved, is the fact that airliners flying over these areas, have on several occasions arrived several hours ahead of schedule at their point of destination. The time of some of these flights, from take-off to landing exceeds the speed capability of the aircraft by several hundred miles per hour.

In our "Proceedings" issues of October and November of 1954, and January of 1955, we printed drawings showing the linear lines of energy in space causing the earth to orbit the sun, the earth to rotate on its axis, and the moon to orbit the earth.

In the December 15 issue of the "Proceedings" in 1953, we printed the data on these linear lines of energy relative to speed and density. At that time however we failed to relate that the negative lines of linear energy in space are backing up in time, or going retrograde from the present.

In the October 1954 "Proceedings" we explained how disintegration occurs. The article was titled "Birth and Death". Since everything from atoms, to planets, to galaxies is affected by these linear lines of force, "Birth and Death" is an interchange of matter and energy. Time, as we know it, relative to motion, is a day by day experience which seems to go faster as we get older.

If the grid output in the "Bermuda Triangle" reaches a resonance with the positive and negative linear lines of energy at the 16,000 miles per second differential, then anything at that point, and time, will either fly off the planet as gravity is nullified, or disintegrate. The sun plays an important part in this, as Hieronymous found out; that in the shadow side of the moon emission of energy is nullified. The negative won't work without the positive.

Creation is an act of mind. Mind is the causal excitation of the linear lines of energy in space. Atoms are formed from the induction of these linear lines. Molecules are atoms clustered in the structure of matter, people, aircraft, and ships. Creation was made to also unmake itself, like unraveling a knitted sweater.

The Creator (Infinite Mind), established laws that demonstrate to people, in many ways, that time is absolute. Atoms change in what we call the half life cycle. They produce tremendous power if this natural change is accelerated as in an atom bomb. This is a matter to energy change. The critical mass exceeds its ability to stay glued together, (like people falling down when they lose their balance).

What occurs at the nodes and edges of the world grid lattice is a refraction between two facets (like mirrors) by the linear lines of energy creating a resonance that disintegrates, or nullifies gravity.

If Kowski and Frost had increased the expansion of their quartz crystal beyond the gravity nullification and antigravity point, their quartz crystal would have disappeared.

This is a difficult article to write in laymans language; we are only trying to offer you a true viewpoint on the "Triangle" disappearances around the world.

We comment to those "Johnny come lately" authors and experts who write about the "Bermuda Triangle", and never had an experience with a U.F.O., "Be thankful their crews are compassionate and forgiving people".

Bruce Cathie's calculations, verifying that the "Integratron" here is centered on a grid harmonic is geophysically indicated by the silica knolls around it.

The Bible says "in the latter days all things will be revealed ", so we continue to try and find the answers.

(Back issues of the "Proceedings" mentioned in this article are no longer available)

THE INTEGRATRON

Necessary work is progressing at the "Integratron". New sealing and painting of this 4-story-high machine is in progress. Work on an ion-condenser is nearly finished. Roughly 88% of the work is done. We look for first operation before the end of 1976. Our thanks to those who have made this progress possible.

UNIVERSAL POWER

"Universal Power" is Mind. Mind is unlimited as to distance, time or space. It is everywhere in a static essence of pure intelligence.

Religion is the feeble effort on the part of the materialistic entity to comprehend infinity. Power is only the manifestation of action in motion, pressure, and speed. Man establishes his own zeros to have a point to measure from.

Mind is not dimensional in three dimensions, four dimensions, or any number of dimensions. Mind has no point to begin measuring from.

The individual entity looks out of eyes, be it human or insect, and establishes everything it can comprehend within its range of this vision from its own viewpoint. Most things it looks at it cannot comprehend. It knows a tree is a tree but does not know how the tree became a tree, or any of the complex electro-magnetic biochemical laws that the tree must conform to to be that pattern.

Disease is a distortion of the mind that causes aches and pains as an effect of ignorance of the use of laws of mind.

Uri Geller bends metal by the simple application of the laws of mind. He does not go through a complex series of thoughts from the brain in word language toward the metal. His one total thought activates the mind power in the metal at the point where it bends. The atoms and molecules respond to the laws of expansion and contraction because the mind that contains them as entities creates pressure in their assembly. Children can do this since ego is not involved.

Gravity is the pressure of Universal Mind throughout the infinity of space in its still essence.

Perfect Mind is space. Material things are manifestations of the laws of space, be they galaxies, planets, or people. Material things are the assembly of thought reflections of mind in the contrast of

opposites. Mind is not polarized. The perfect stability of mind in its static state makes it have more volume than anything else and we call it space.

There is more space in all material things than there is in matter. Matter is space condensed, to show the composition of mind where the matter is. Atoms are polarized assemblies of space in its ability to manifest duality.

Mans so called "right of free choice" is the gift of mind, to allow the entity to unbalance the power of mind, in one direction or the other. Mind performs the function of this action and allows the entity to see the beneficent, or detrimental results of the entities choice. When you burn your finger you hesitate to touch the stove again. Thus the entity learns through experience what is labeled good, or bad, for itself.

A civilization, on a planet, is a composite of space condensed in many variations. We separate these variables in classes of animal, vegetable, and mineral. The vegetable and mineral, species continue over the millions of years to conform to the limits of the laws of mind. The animal system violates the laws of mind because it can move around. The fact that it can move allows it to invade other environments, fight each other, or commit suicide. The entities "right of free choice" extends beyond its mind given limits to make only decisions affecting itself. The entities "gang up" to increase the power of their choice of decision. This is a violation of the gift of choice to the entities who were granted only the dominion of "all other things".

Minds law did not grant the decision of man over man. The actions of the "ganged up" entities are violating the individual rights of the multitudes, on the planet, by making their decisions, and enforcing them, with their own laws. Universal Minds laws of reciprocation will activate when the pressure of these unnatural laws become critical.

Mass mind under pressure of conflict, or burden of taxes, and especially not enough to eat, will retaliate on the violators of Minds natural laws.

Now that the decisions of the "ganged up" minority, in secret deals, is affecting the social, economic, and spiritual tranquility of millions, reciprocation can occur. Replacing a "no win war" with "peace" under the pressure of hunger, and economic instability, will not pacify the multitude of entities.

Natural law provides survival, in mind, as the strongest emotion in the entities that move in the animal world. Civil laws, order or prosecution leave the mind of an entity when the belly-button rubs on the backbone.

President Wilson once said, "The greatest force on the earth is the mutual spontaneous reaction of people". The economically broke, the hungry, and regimented people do not need planes, or guns, or generals to revolt against the minority who created their oppression. Mind gives them a mutual bond and mass mind can activate in retaliation.

When Universal Mind made individual entities contented, each as the center of their own universe, they became peaceful entities in their own place.

The use of oil, or food, or arms, as weapons of an international war for peace is a violation of Minds purpose for these commodities. Oil is for power and lubrication. Food is for use by those who produce it. Guns should be for protection only. Each has its place in Minds Eye.

Weapons of war do not bring peace. Today the world is armed with the ability to extinguish this civilization. Was the decision by the minds in the minority, to bring this condition about for the multitudes, done for peace, or profit for the minority?

The minds of the few, making decisions that pressure the minds of the multitudes, should stop and look back. The future is sneaking up behind them. Mind in its static balance created the laws of reciprocation to bring order through chaos.

Mind also provided external assistance that cannot be bribed, or controlled by the violators of natural laws. These entities are watching the power fiasco being staged in secrecy.

If the minority on the road to oblivion would destroy all of the weapons of war, the multitudes would look upon them with the status of gods. They wouldn't need armed security guards. They would not have to fear kidnapping, or assassination. They could live in the glory of their accomplishment because the mass minds of the multitude and the static Universal Mind would reward them. Peace would not be a hypocritical word, as it is now, while the world arms for war for power and profit.

The mass mind of the multitudes will not put up with another war. They know now where the cause is.

Universal Mind is not concerned in this crisis, on this speck of rock in space. Oil was here for millions of years without people killing each other for the control of it.

Greed, and the desire for power over the multitudes, through restriction, is not a goal to be proud of. It is a pit full of snakes. Big Brother is already dead. When the minority consult the wisdom of the elderly minds of the majority they will find a way out of the pit. Might will never make Right, and bullets and bombs do not separate the wealthy from the poor.

Universal Mind can bend silver through its power and direction. It can create a galaxy, or an atom, from Itself through Universal Laws. How simple to consult this great perfect power to solve the crisis on this ball of rock in space and reverse the course now.

The minority in authority have this choice now to live in a greater glory than their minds can conceive of out of the conflict of entities in war.

Oil is Satan's blood. Its odor alone shows that. Electrostatic magnetic power runs the universe. It has no smell, it does not produce pollutants. It spins galaxies and solar systems. It makes the physical bodies function.

Universal Mind did not make the material universe to operate in conflict, or opposition. The order and composition of its manifestation verify that.

Each physical entity is a reflection of itself in a matter energy alternative in space. One cannot feel the blow if they strike their reflection in a mirror. They can study the phenomena of their being in the mirror however, and have feelings in their mind. Now all we have to do is take this feeling mind and direct our course in the right direction.

One cannot improve upon the Golden Rule. This law only requires that one treat all entities like they themselves would want to be treated. Mind gives one a feeling when this law is followed that gold cannot buy.

The feeling entities all experience the same emotions regardless of race, color, or creed. These feelings are not of the five physical senses, they are of the mind. Your choice in Universal Mind, in the treatment of others reflects upon yourself as in a mirror. When one forces another to do something they are violating natural laws.

Mass mind of the controlled multitude can reach such a state of oppression that the reaction could cause the minds of the soldiers to turn enmass on their superiors. There is a fulcrum point in mind that makes the pendulum return in its swing.

It is not hoped that this article will change the minds of that minority in power in the world, but it might seep in to the majority.

Universal Mind is in you - in everything. Try to recognize it and use it. It loves you.

CHANGE OF ADDRESS

If you move and do not send us your old, and new address, we have no way to mail you your "Proceedings".

Be sure to let us know if you move, or your file card goes into the inactive file.

FRONT PAGE PICTURE

This picture is of the South Polar ice cap. It is reprinted from a slide negative of a Defence Department weather plotting chart.

The purpose in printing this picture is to show our readers the movement of the South Magnetic Pole. When the first charting of the magnetic course started in 1909, the South Magnetic Pole was at 70°30' S. latitude and 155°30' E. longitude. The latest available data on this map is for the year 1970. The pole position then was 66°00' S. latitude and 138°00' E. longitude. This indicates that the South Magnetic Pole has moved in a zigzag path 4°30' in latitude and 17°30' in longitude in 61 years away from the South Geophysical Pole.

The North Magnetic Pole is moving toward the North Geophysical Pole. There is a difference of 25°30' in longitude and 9° in latitude. The North Magnetic Pole should arrive at the North Geophysical Pole in approximately 17 to 20 years.

The fact that the South Magnetic Pole is moving away from the Geophysical Pole would indicate that a polar unbalance could result around 17 to 20 years from now, based on the laws of gyroscopics. Geophysicists will, of course, disagree with this because their science is based on the Geophysical Poles; but they are not versed in the reactions of magnetic causes.

The Magnetic Poles on the surface of the geographic surface of the planet are the geophysical poles of the floating core of the earth. The movement of the magnetic poles shows the shifting of the poles of the core of the earth. The core of the earth rotates in the opposite direction of the crust, or East to West.

Atomic underground tests are accelerating the changes, or "shortening the days" (the number of days, not shorter hours). Electromagnetic effects of these tests are changing the energy charge, or nullifying it, of the entire structure of the earth. We are now on the edge of major geophysical disasters as an after effect of these tests underground.

When the North Magnetic Pole reaches the North Geophysical Pole the South Magnetic Pole will be twice as far from the South Geophysical Pole as it is now. This will cause the earth to oscillate, or as the Bible says, "reel like a drunken man", and there will be the "earthquake like there never was before".

Here is the official South Magnetic Polar movement as taken over a period of 61 years:

<u>Year</u>	<u>Latitude</u>	<u>Longitude</u>
1909	72°30'	155°30'
1912	70°40'	148°15'
1932	69°00'	148°00'
1945	68°15'	145°20'
1952	68°10'	143°00'
1965	66°30'	140°00'
1970	66°00'	138°00'

Any wobble to any extent in the planet will react like a top when it slows down. The masses of polar ice will then try to reach the periphery of the spin, or the new equator. According to Biblical prophecy "there will be no seasons". This would put the new poles perpendicular to the ecliptic.



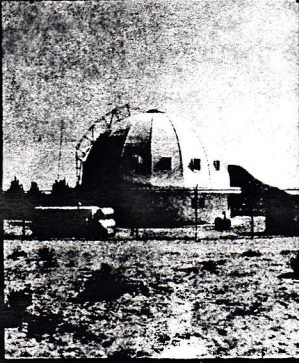
SCIENTISTS CAN BE SO WRONG

"For a projectile to escape the gravitation of Earth, it needs a velocity of seven miles a second. The thermal energy of a gram at this speed is 15,180 calories The energy of our most violent explosive - nitroglycerine - is less than 1,500 calories per gram. Consequently, even had the explosion nothing to carry, it has only 1/10 of the energy necessary to escape Earth Hence, the proposition appears to be basically impossible. . . ."

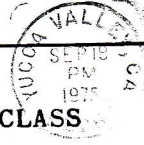
Professor A.W. Bickerton, 1926. Quoted from "Voyage to the Stars", Eric Burgess, in Astronomy, March 1975, 5:3; 29.

Proceedings

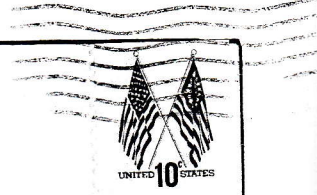
OF THE COLLEGE OF
UNIVERSAL WISDOM



P.O. Box 458
YUCCA VALLEY, CALIFORNIA
U.S.A. 92284



FIRST CLASS



Howard Dissly
11743 Villa Dorada Dr.,
Creve Coeur, Mo.
63141

