

Proceedings

OF THE
COLLEGE OF UNIVERSAL WISDOM
YUCCAVALLEY CALIFORNIA

The Voice of the Integratron
Our 27th year of publication



VOL. 12

JANUARY - FEBRUARY - MARCH -

1981

NO. 3



IN MEMORIAM

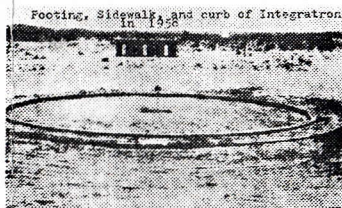
Induction March 12, 1910

short circuit February 9, 1978

George W. Van Tassel was the primary builder of the INTEGRATRON. Through coordinative actions of many associate scientists around the world for nearly thirty years, this electro-dynamic wonder is nearly completed for testings.

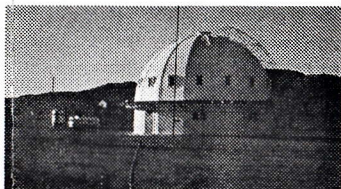
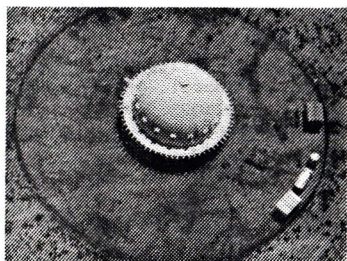
The INTEGRATRON is a non-metallic structure 38-feet high and 58-feet in diameter. This dome is an electrostatic magnetic generator with an armature over four times larger in diameter than any other in existence. The fields generated by this machine encompass its entire structure. This is why the dome does not contain any nails, bolts or metal in the assembly. The dome is six times stronger than the commercial building code requires and is held together like a Chinese puzzle.

The theory of the function of this giant machine is based on seven years of smaller research. It is designed to charge cell structure with energy, rejuvenating the human body.



Footing, Sidewalk, and curb of Integratron in 1958

1958



1981 Progress
continues...

NOTICE TO MEMBERS

The Ministry of Universal Wisdom, Inc. and the Research Membership associated within the College, are not associated with any others... church, organization, or corporation. The full project Integratron is a direct and continuing program that is an outgrowth of the ORIGINAL FORMULA given to George W Van Tassel by Solgonda. The ideals remain the same and the God Power in the reason for this project continue also. It is this Power that we recognize in the schedule for finalizing and for use. The calender does not program us. This is a right not a want situation. Man would be too selfish for proper judgements at this phase...It is obvious that man does not fool God with human ideas. We either evolve in the way of His Perpetual Progression, or go backward to man choice.. Wisdom is not confined to the size, age, or even the place of a happening. Babies and children often express wisdom better than adults. God provides..Man divides. The formula for the Integratron was given and the attempts by man or a group only seems to change the pattern involved with external physical phases. We learned again recently finalizing would be under Specific Authority and that the real issue was not a date on a calender page, but sequences of more than our own planet action. Many see a calender marked with dates of their own wants. Earth folk seldom live with a very high form of knowing & being acquainted with those of greater and broader concepts than is ours is wonderful.



"PROCEEDINGS" - mailed free to those requesting it and who financially support cost and printing by donations. Checks & money orders verify your contribution. There is no subscription rate. All donations, money-orders, checks, and bequests should be made to the Ministry of Universal Wisdom Inc.

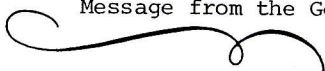
"PROCEEDINGS" - published by the Ministry of Universal Wisdom Inc., Drawer "G" Yucca Valley, California, USA Business & Editorial offices: Ministry Office Building President & Editor: Mrs. Dorris (Geo. W) Van Tassel. Secretary: Edwin Wrenchey.
NO SOLICITORS & REPRESENTATIVES EMPLOYED OR AUTHORIZED
Manuscripts & photographs by members and friends to be accompanied by self-addressed, stamped envelope. Please address questions, gifts, etc., concerning publication directly to Editor.

(All rights reserved, including translations.)

THE MINISTRY OF UNIVERSAL WISDOM, INC.
phone (714) 364-2784 - evenings - 6 to 9
Drawer "G" Yucca Valley, California 92284



THOUGH I have set the patterns of my doing all about you—yet you see them not.... I scatter seeds of Light. I cast the shadows man calls day, and shadows of the shadows, man calls night, in repetition. I have paved the way for man to see. Has not my pattern stood the test to build another bird a nest again, where others were before? Cannot you see, O man of me—do as I say, do as I do. Do as I cause the way to be, within your understanding of the me in thee.— Look to the pattern all around: the fragrance of the essence of my love in flowers you have found, and in the cool, beneath the tree, there I am to comfort you and yet you question parts of me. Throughout my being, I made thee man to carry on; to take the stand in my defense; to build the wall, to scale the fence of destiny. Not to follow whims of chance along the side; not to fall beneath the wheels of hate and fear—that others may ride in comfort, Only look, feel the essence of my being. Absorb me in the breeze. Reach me in the sun. My heart is warm. You are the one. Never have I set a pattern to lead you all astray. Any fear you feel, O man, you make along the way to me and your arrival is delayed. Your stage is set. The curtain must come down, but only to go up again. My pattern is eternity. Repetition is the grade that leads to me, O man.



BULK RATE
U.S. POSTAGE
LUCERNE VALLEY
CA 92356
Permit No. 17

