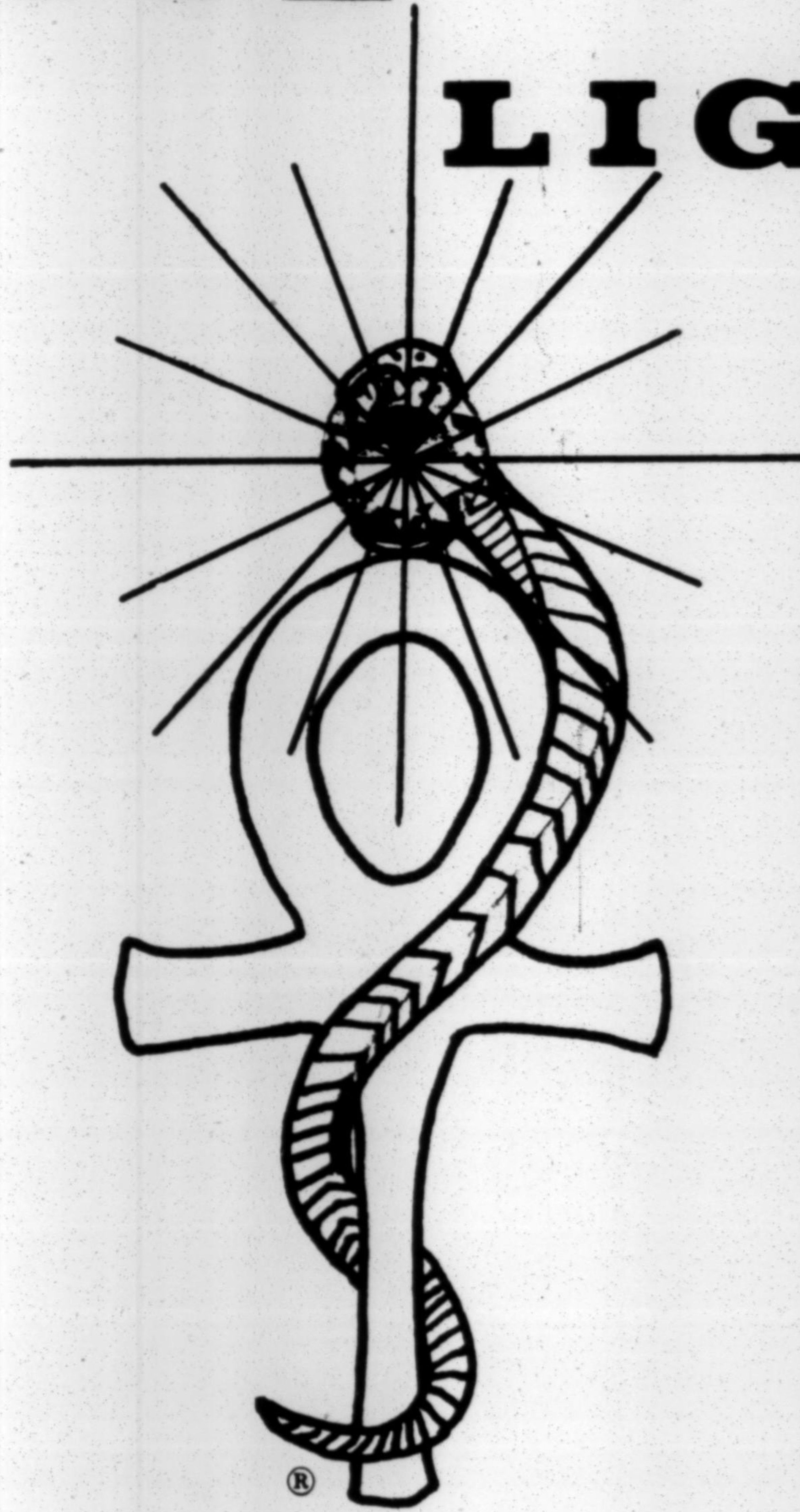


**the**  
**WHITE**  
**LIGHT**



**VOL.1 - N°1**

© COPYRIGHT 1974 L.O.T.C.  
® REGD. T.M.

THE WHITE LIGHT

is the journal of the

TEMPLE OF TRUTH,

a Hermetic Magickal Order

Sponsored by:

**The Light of Truth Church**

Rev. Nelson H. White, D.D., Editor

Rev. Sergei A. White, Ass't Editor

Business and editorial offices are located  
at 747 N. Lake Ave. Pasadena, Calif. 91104

Subscriptions to non-members are \$6.00/year,  
please be sure to include your ZIP code when  
subscribing or giving a change of address.

Address all correspondance concerning this  
publication to: Box 3125, Pasadena, Ca. 91103

The entire content of this publication (unless  
otherwise noted) is Copyrighted by The Light  
of Truth Church, Inc. and may not be copied  
or reproduced without written authorization.

Exchange advertisements and subscriptions  
are solicited, as are germane articles  
on the subject of Ceremonial Magick and  
related areas. No payment is offered for  
such contributions, and preference will  
be given to articles from members.

Tax deductible receipts will be sent when  
requested, only. Ad rates and requirements  
on request. Dealers Wanted.

Please include a stamped, self-addressed  
full sized envelope if you wish a quick reply.

© COPYRIGHT 1974, L.O.T.C. INC.

PRINTED  
IN  
U.S.A.

## WELCOME !

This is the inaugural issue of THE WHITE LIGHT, issued on the occasion of the First Anniversary of the founding of The Light of Truth Church and its Hermetic Magickal Order, The Temple of Truth. Other Church activities include a bookstore (The Magick Circle) and a mail-order service, which will shortly include tapes of our initial series of five lectures on Magick, (see ads elsewhere in this issue).

Membership in both the Church and the Order are limited to persons who have completed the introductory classes in person, although reciprocity to members of certain other organizations is usually granted.

As the primary objective of The Temple of Truth is the practice of Ceremonial Magick, so will THE WHITE LIGHT concern itself primarily with Magick, however related areas and practices will also be included. In an effort to enliven the current American Occult Scene, a section of satire (The Yellow Rag) will be included in many of the forthcoming issues. Contributions for this section will be gleefully (chuckle) accepted, as well as artwork, poetry, and serious articles. Persons considering such contributions should consult the statement printed on the inside front cover. Yellow Rag selections should be limited to half a page if possible. O.K. people, Hunting season is open. Good luck.

# THE WHITE LIGHT

is the journal of the

TEMPLE OF TRUTH,

a Hermetic Magickal Order

Sponsored by:

## The Light of Truth Church

Rev. Nelson H. White, D.D., Editor

Rev. Sergei A. White, Ass't Editor

Business and editorial offices are located at 747 N. Lake Ave. Pasadena, Calif. 91104

Subscriptions to non-members are \$6.00/year, please be sure to include your ZIP code when subscribing or giving a change of address.

Address all correspondance concerning this publication to: Box 3125, Pasadena, Ca. 91103

The entire content of this publication (unless otherwise noted) is Copyrighted by The Light of Truth Church, Inc. and may not be copied or reproduced without written authorization.

Exchange advertisements and subscriptions are solicited, as are germane articles on the subject of Ceremonial Magick and related areas. No payment is offered for such contributions, and preference will be given to articles from members.

Tax deductible receipts will be sent when requested, only. Ad rates and requirements on request. Dealers Wanted.

Please include a stamped, self-addressed full sized envelope if you wish a quick reply.

© COPYRIGHT 1974, L.O.T.C. INC.

PRINTED  
IN  
U.S.A.

## WELCOME !

This is the inaugural issue of THE WHITE LIGHT, issued on the occasion of the First Anniversary of the founding of The Light of Truth Church and its Hermetic Magickal Order, The Temple of Truth. Other Church activities include a bookstore (The Magick Circle) and a mail-order service, which will shortly include tapes of our initial series of five lectures on Magick, (see ads elsewhere in this issue).

Membership in both the Church and the Order are limited to persons who have completed the introductory classes in person, although reciprocity to members of certain other organizations is usually granted.

As the primary objective of The Temple of Truth is the practice of Ceremonial Magick, so will THE WHITE LIGHT concern itself primarily with Magick, however related areas and practices will also be included. In an effort to enliven the current American Occult Scene, a section of satire (The Yellow Rag) will be included in many of the forthcoming issues. Contributions for this section will be gleefully (chuckle) accepted, as well as artwork, poetry, and serious articles. Persons considering such contributions should consult the statement printed on the inside front cover. Yellow Rag selections should be limited to half a page if possible. O.K. people, Hunting season is open. Good luck.

# MAGICK & ETHICS

By: Fra. Zarathustra  
(G.M.: T.:O.:T.:)

This magazine, and the organization which it represents, is partly the result of several broken promises on the part of a person who styles himself a "High Adept" of another organization. While I was undergoing training there, (after putting in several years of work and a great deal of money), it became apparent that regardless of the promises made to me, I was becoming less and less an equal partner, and more and more a victim of this "Officer's" egomania, therefore I resigned and founded this my own organization.

In addition to Magick, I learned a great deal about how NOT to run a Magickal Lodge. Unlike this other organization, The Temple of Truth is NOT interested in recruiting only pretty, young, impressionable (and preferably rich) people. Neither do we use a 'written exam' as a screening device, outline for interrogation or quickie psychoanalysis. We also shun the fingerprint, mug-photo, "E meter" routine, all of which was used to intimidate potential members into accepting the "Word" and "Discipline" of the "Grand Master" without question. We also do NOT turn down persons who already have some degree of enlightenment and/or prior Magickal experience.

Mature, experienced persons are no threat to us, simply because (if for no other reason) we do not pretend to be the Fount Of All Knowledge (Magickal or otherwise). History, it appears is repeating itself. This sort of thing has happened before, not just in Magickal Lodges, but in all sorts of Occult and Religious groups, in all times and places.

We recognise that there are many different paths to personal enlightenment, one or more of which may be valid for any given individual. We recognise and are prepared to give full faith and credence (on a reciprocal basis) to those other organizations (representing these other paths), which in fact do not exploit their members, the public, or use fear, coercion, secrecy or hate to bind their membership to them.

MAGICK & ETHICS (Cont.)

These conditions eliminate a surprisingly large number of Occult and Pseudo-Occult organizations (and individuals). The remaining, without regard to whatever other differences may exist in doctrine, method, technique, et cetera, are acknowledged and welcomed so long as they are effective, beneficial, honest and non-coercive. We may disagree on any number of points, we may not even like them particularly, but we refrain from attempting to influence their activities or teachings, because that is essentially their business and not ours.

On the other hand, we will not tolerate attempts by others to influence our activities, or defame our persons or practices. This is only logical and just.

Having studied the rise and fall of several Magickal organizations, we endeavor not to make the same errors, hence we claim no "Secret Masters", accept no one single book as Holy Writ or Dogma, and we refuse to state that we are the only functioning Magickal Lodge in the Los Angeles area. Likewise, we refuse to claim either a Golden Dawn or an O.T.O. derivation. We refuse to coerce our own members by any means whatever into being "good" (whatever that is supposed to mean) unless their activity threatens the Lodge. We likewise do not use a rank structure, degrees, titles, Oaths of Secrecy, and so forth, because we feel that sooner or later such structure will become susceptible to mis-use and cause envy, jealousy, false pride and self-delusion, all of which lead to a loss of Magickal effectiveness and eventually the splintering or destruction of the Lodge.

We are interested in what works, consequently we are quite eclectic and inter-disciplinary in our approach. However we don't hide under a rock. We feel that if Magick is to be effective and beneficial to Mankind, it should be available and used, rather than just taken out, gloated over and played with once a week or so, hence our Shop. Many persons decry the operation of an Occult Shop as 'commerical', etc. Our reply is: "If your Magick is so great, why don't you use it to help people?" Please Note: "...Help People...", not hurt people.

# MAGICK & ETHICS

By: Fra. Zarathustra  
(G.M.: T.:O.:T.:)

This magazine, and the organization which it represents, is partly the result of several broken promises on the part of a person who styles himself a "High Adept" of another organization. While I was undergoing training there, (after putting in several years of work and a great deal of money), it became apparent that regardless of the promises made to me, I was becoming less and less an equal partner, and more and more a victim of this "Officer's" egomania, therefore I resigned and founded this my own organization.

In addition to Magick, I learned a great deal about how NOT to run a Magickal Lodge. Unlike this other organization, The Temple of Truth is NOT interested in recruiting only pretty, young, impressionable (and preferably rich) people. Neither do we use a 'written exam' as a screening device, outline for interrogation or quickie psychoanalysis. We also shun the fingerprint, mug-photo, "E meter" routine, all of which was used to intimidate potential members into accepting the "Word" and "Discipline" of the "Grand Master" without question. We also do NOT turn down persons who already have some degree of enlightenment and/or prior Magickal experience.

Mature, experienced persons are no threat to us, simply because (if for no other reason) we do not pretend to be the Fount Of All Knowledge (Magickal or otherwise). History, it appears is repeating itself. This sort of thing has happened before, not just in Magickal Lodges, but in all sorts of Occult and Religious groups, in all times and places.

We recognise that there are many different paths to personal enlightenment, one or more of which may be valid for any given individual. We recognise and are prepared to give full faith and credence (on a reciprocal basis) to those other organizations (representing these other paths), which in fact do not exploit their members, the public, or use fear, coercion, secrecy or hate to bind their membership to them.

## MAGICK & ETHICS (Cont.)

These conditions eliminate a surprisingly large number of Occult and Pseudo-Occult organizations (and individuals). The remaining, without regard to whatever other differences may exist in doctrine, method, technique, et cetera, are acknowledged and welcomed so long as they are effective, beneficial, honest and non-coercive. We may disagree on any number of points, we may not even like them particularly, but we refrain from attempting to influence their activities or teachings, because that is essentially their business and not ours.

On the other hand, we will not tolerate attempts by others to influence our activities, or defame our persons or practices. This is only logical and just.

Having studied the rise and fall of several Magickal organizations, we endeavor not to make the same errors, hence we claim no "Secret Masters", accept no one single book as Holy Writ or Dogma, and we refuse to state that we are the only functioning Magickal Lodge in the Los Angeles area. Likewise, we refuse to claim either a Golden Dawn or an O.T.O. derivation. We refuse to coerce our own members by any means whatever into being "good" (whatever that is supposed to mean) unless their activity threatens the Lodge. We likewise do not use a rank structure, degrees, titles, Oaths of Secrecy, and so forth, because we feel that sooner or later such structure will become susceptible to mis-use and cause envy, jealousy, false pride and self-delusion, all of which lead to a loss of Magickal effectiveness and eventually the splintering or destruction of the Lodge.

We are interested in what works, consequently we are quite eclectic and inter-disciplinary in our approach. However we don't hide under a rock. We feel that if Magick is to be effective and beneficial to Mankind, it should be available and used, rather than just taken out, gloated over and played with once a week or so, hence our Shop. Many persons decry the operation of an Occult Shop as 'commerical', etc. Our reply is: "If your Magick is so great, why don't you use it to help people?" Please Note: "...Help People...", not hurt people.

MAGICK & ETHICS (Cont.)

This brings up an important point: Except for the defence of the Lodge, we will under no conditions engage in what we consider to be "black magic" (eg: Any Magick which attempts to control an individual or limit his scope of action, opinion or thought, for any reason whatever, with or without that individuals' prior knowledge or consent.) There are already far too many people doing just that right now.

We don't even attempt to help all of the people who come to us. We pick and choose those whom we think we can help. To the pathetic, insecure little people who are desperately searching for a new Messiah to follow or worship, we say: "Sorry, we don't work that way." To the lazy, greedy, shallow and obnoxious people who expect us to give them "The Secrets of The Ancients" on a silver platter in half an hour with no effort on their part; we also say: "We don't work that way", and would not even if we could. To all the scared, guilty, irresponsible people who expect us to intercede between themselves and either Karma or the American Legal System to prevent them from receiving the Punishment which they have so dilligently and repeatedly earned for themselves, we likewise say: "We don't work that way either." To a belligerent, vile, hateful person who wishes to use Magick as a weapon or equalizer, against another person or the World at large, obviously we say: "We don't work that way and we won't help you to work that way".

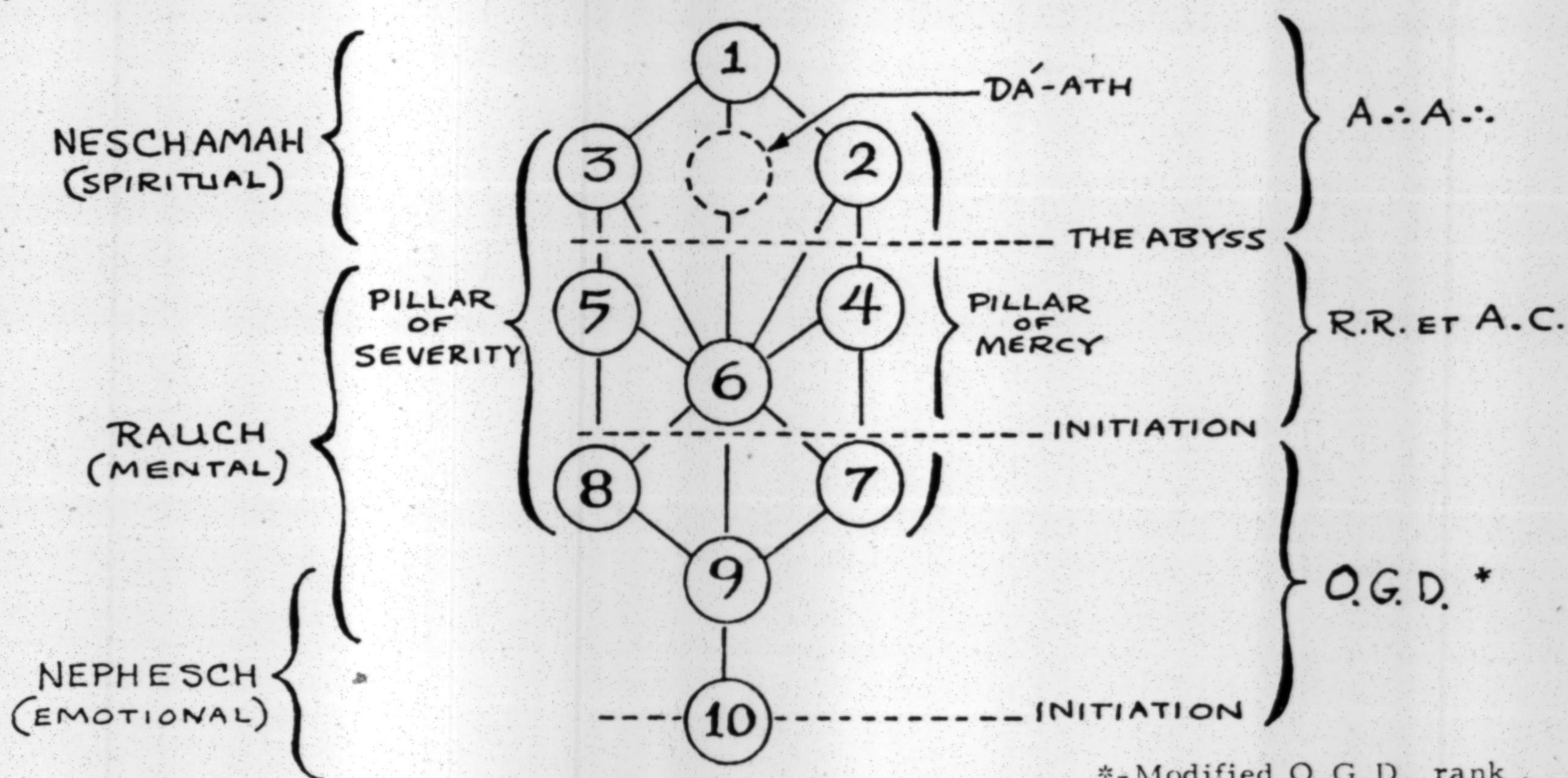
Nothing of value in this or any other world was ever obtained without cost or effort. Magick takes work, time and a certain minimum amount of mental maturity, honesty, and self-criticism.

We hope that in the not-to-distant future, we shall have suitable facilities to expand our counseling activities so that we may more adequately serve the needs of the community. We don't expect to get rich, powerful or famous doing this. We are practicing Magick for love and the advancement of the Art, and as a counter-force to all that we see as incorrect in this World.



# The Notebook

BASIC KABBALAH --- THE TREE OF LIFE  
With related symbols and correspondences.



\*-Modified O.G.D. rank.  
(The T.O.T. does not use these)

SEPHIROTH	MEANING	COLOR	PLANET	METAL	ANGEL	PERFUMES
1) KETHER	CROWN	WHITE	INFINITY ∞		YATVEH METATRON	AMBERGRIS
2) CHOKMAH	WISDOM	GREY	ZODIAC ♊		RAZIEL	MUSK
3) BINAH	UNDERSTAND- ING	BLACK	SATURN ♄	LEAD	TZAPHQIEL CASSIEL ♄	MYRRH, CIVET
4) CHESED	MERCY	BLUE	JUPITER ♃	TIN	TZADQIEL SACHIEL ♃	CEDAR
5) GEBURAH	POWER	RED	MARS ♂	IRON	KAMAEL ZAMAEL ♂	DRAGON'S BLOOD
6) TIPHARETH	BEAUTY	YELLOW	SUN ☉	GOLD	MICHAEL ☉	FRANKINCENSE OLIBANUM
7) NETZACH	VICTORY	GREEN	VENUS ♀	COPPER	HANIEL ♀	ROSE, CINNIMON SANDALWOOD
8) HOD	MAJESTY	ORANGE	MERCURY ☿	MERCURY (BRASS)	RAPHAEL ☿	STORAX
9) YESOD	FOUNDATION	VIOLET	MOON ☾	SILVER	GABRIEL ☾	JASMINE
10) MALKUTH	KINGDOM	EARTH COLORS	EARTH ♁		AURIEL	DITTANY OF CRETE

MAGICK & ETHICS (Cont.)

This brings up an important point: Except for the defence of the Lodge, we will under no conditions engage in what we consider to be "black magic" (eg: Any Magick which attempts to control an individual or limit his scope of action, opinion or thought, for any reason whatever, with or without that individuals' prior knowledge or consent.) There are already far too many people doing just that right now.

We don't even attempt to help all of the people who come to us. We pick and choose those whom we think we can help. To the pathetic, insecure little people who are desperately searching for a new Messiah to follow or worship, we say: "Sorry, we don't work that way." To the lazy, greedy, shallow and obnoxious people who expect us to give them "The Secrets of The Ancients" on a silver platter in half an hour with no effort on their part; we also say: "We don't work that way", and would not even if we could. To all the scared, guilty, irresponsible people who expect us to intercede between themselves and either Karma or the American Legal System to prevent them from receiving the Punishment which they have so dilligently and repeatedly earned for themselves, we likewise say: "We don't work that way either." To a belligerent, vile, hateful person who wishes to use Magick as a weapon or equalizer, against another person or the World at large, obviously we say: "We don't work that way and we won't help you to work that way".

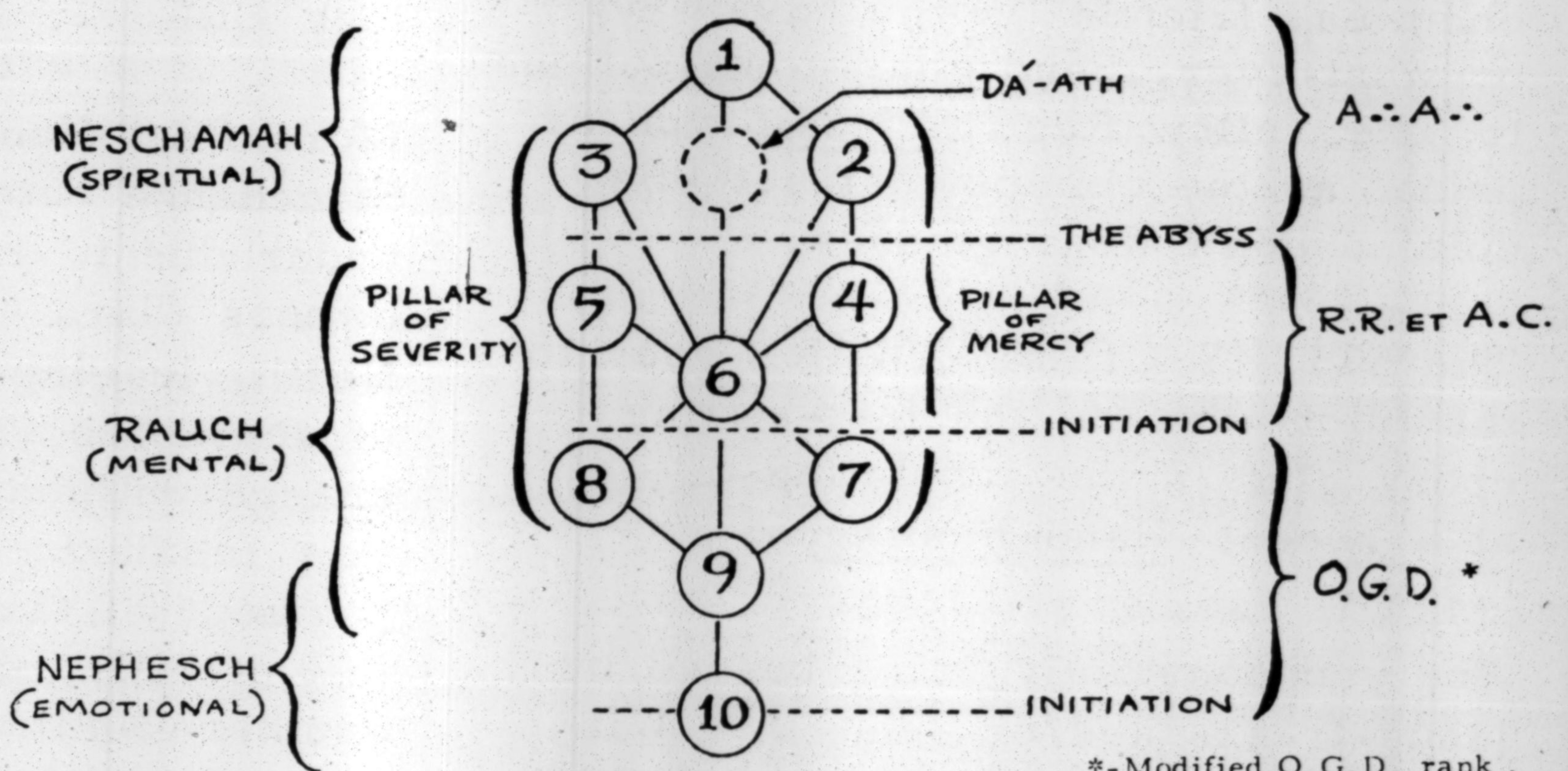
Nothing of value in this or any other world was ever obtained without cost or effort. Magick takes work, time and a certain minimum amount of mental maturity, honesty, and self-criticism.

We hope that in the not-to-distant future, we shall have suitable facilities to expand our counseling activities so that we may more adequately serve the needs of the community. We don't expect to get rich, powerful or famous doing this. We are practicing Magick for love and the advancement of the Art, and as a counter-force to all that we see as incorrect in this World.



# The Notebook

BASIC KABBALAH --- THE TREE OF LIFE  
With related symbols and correspondences.



\*-Modified O.G.D. rank.  
(The T.O.T. does not use these)

SEPHIROTH	MEANING	COLOR	PLANET	METAL	ANGEL	PERFUMES
① KETHER	CROWN	WHITE	INFINITY ∞		YATVEH METATRON	AMBERGRIS
② CHOKMAH	WISDOM	GREY	ZODIAC ♊		RAZIEL	MUSK
③ BINAH	UNDERSTAND- ING	BLACK	SATURN ♄	LEAD	TZAPHQIEL CASSIEL ♄	MYRRH, CIVET
④ CHESED	MERCY	BLUE	JUPITER ♃	TIN	TZADQIEL SACHIEL ♃	CEDAR
⑤ GEBURAH	POWER	RED	MARS ♂	IRON	KAMAEL ZAMAEL ♂	DRAGON'S BLOOD
⑥ TIPHARETH	BEAUTY	YELLOW	SUN ☉	GOLD	MICHAEL ☉	FRANKINCENSE OLIBANUM
⑦ NETZACH	VICTORY	GREEN	VENUS ♀	COPPER	HANIEL ♀	ROSE, CINNIMON SANDALWOOD
⑧ HOD	MATESTY	ORANGE	MERCURY ☿	MERCURY (BRASS)	RAPHAEL ☿	STORAX
⑨ YESOD	FOUNDATION	VIOLET	MOON ☾	SILVER	GABRIEL ☾	JASMINE
⑩ MALKUTH	KINGDOM	EARTH COLORS	EARTH ♁		AURIEL	DITTANY OF CRETE

All the Dirt  
that's fit to  
Print !!

# THE YELLOW

\*\*\* TOTALLY IRRESPON

Attention Occultists ! Here is your long awaited chance to ZAP your enemies, friends (if you have any) or what-ever. Send your contributions to The Yellow Rag. Please type or print, as the chimps that set this column don't wear glasses.

\*\*\*\*

The STICKY CLASP AWARD goes to the idiot who put the fast-setting epoxy glue in the anointing oil, at a recent Hand-Fasting.

\*\*\*\*

Are you constantly being bugged by Jesus-freaks and/or Jehovah's Witnesses? A "NO RELIGIOUS SOLICITORS" sign is available from this rag. Printed on a bilious yellow card stock, these signs come 4 to a sheet. Price \$1.00 each postpaid.

\*\*\*\*

The DIRTY DIGIT to D.M. Furman, Advertising Manager of BIC Pen Co. for his defense of their sponsorship of "The Devil Made Me Do It" NBC-TV Show. Here's one for your hernia, fella (?).

\*\*\*\*

Speaking of Fast Hands, we heard that Herman Slater's shop got taken for over three thousand bucks by a supposed friend, who is now we understand in England. No Joke. This Foul Fellow is named NORBERT

POLI. He also ap addict among other (See ERN #4, for m

\*\*\*\*

More Fast Hands d Stonehenge Shop he under due to emplo owners (Sara & Do North, leaving BAF of some two years charge. Upon thei they found the shop payment of taxes, full of bills, duns Southern California warned to be on th person. Theft is no

\*\*\*\*

If you think that the are a problem to th see what the Muslim are saying. "Muhar quite a diatribe. A coming from Chicag example of 'the big propaganda. Not fo sensitive stomach i

\*\*\*\*

"THE ONLY T EVER CLOSES IS WHEN HE P IN IT".

\*\*\*\*

# LLOW RAG

Contributions  
Gleefully  
Accepted.

RESPONSIBLE JOURNALISM \* \* \*

appears to be a Heroin  
her personality faults.  
(for more info.)

\*  
developments: The  
here in Pasadena went  
employee pilfering. The  
(Donna) had gone up  
BARBRA, a student  
years experience in  
their return (unexpectedly)  
shop closed for non-  
s, and a whole wall  
ns etc. A real mess.  
nia Occultists are  
the alert for this  
s no joke.

\*  
the Rabid Christians  
to the Occult, you should  
uslims (not Moslems)  
hammad Speaks" is  
A real hate rag  
icago. A classic  
big lie' school of  
for the weak heart or  
ch individual.

\* \*  
TIME A BIGOT  
ES HIS MOUTH  
PUTS HIS FOOT

\* \*  
- Pages Six and Seven

That Dithering Dirty Dabbler  
of Deeply Demonic Diatribes,  
RUNT YAWN has again fled the  
scene of his recent abode.  
This Diminutive Despot Decep-  
tively Defamed his land-lord,  
causing this individual to  
Righteously Reply by Raising  
the Rent Repeatedly. This  
Despicable Dissolute RUNT  
YAWN Departed the Domicile,  
Depositing Debris of Diverse  
and Disgusting Detail Directly  
upon the Doorstep, Requiring  
Repair and Refurbishing of  
the Residence from-Roof to  
Root-cellar, Revealing  
RUNT YAWN's Reprehensible  
Refusal to Respect the  
Responsibility of a Renter.  
Deliberately Desiring to  
Devalue the Domain, RUNT  
YAWN Deprived the plants  
and trees of water,  
Destroying many innocent  
children of nature and  
Depriving the area of its  
Delightful Decidious fruits  
and pleasent view.

=== To Be Continued ===

(As soon as RUNT YAWN  
gives us sufficient  
provocation, which  
will no doubt be soon.)

## OF CREDULITY AND INCREDULITY.....

By Fra. Zarathustra, GM, T.O.T.

I am continually amazed at the desire of many people to fool themselves. When given a choice between the real tradition system and a synthetic, most choose the synthetic. Some others, still wishing to fool themselves, deny the existence of both the true and the synthetic.

Meric Casaubon, in 1688 published a book on this very subject, regarding the superstitions rampant in London at that time. Allowing for the differences of language and editorial style, he could have been writing about a large segment of the American population today.

Why is it, that nominally sane, sensible people, who usually use their logical, critical facilities in normal every-day living, when confronted with a situation that even approached the area of Religion, Mysticism, "The Occult" or even some branches of Philosophy, shut off that very facility that makes Philosophy so interresting: Rational Thought? I am at a loss to explain this sudden and drastic shift in mental modalities exhibited by most normally sane people.

A modern example of this skewed thinking, would be the assumption by most people that Magick is "bad" or necessarily anti-christian (or anti-anything). Religion as well as all Science, spring from ancient (and primitive) Magick. Obviously, that which becomes known through Human inquiry, is no longer 'unknown'. Such knowledge is 'natural' instead of 'supra-natural'. Why then do persons in the 'sciences' tend to deny that there is something more to explore? (I note with satisfaction, that the U.S. Patent Office has not been required to close its doors, due to a lack of inventions and discoveries, as was suggested not so long ago.) Most particularly, why do persons engaged in religious pursuits tend to be the loudest denouncers of anybody else's pursuits, religious or otherwise.

By what right does a man or group of men enforce their morals and ethics upon some other man or group of men? Especially when there was no prior agreement for one group or person to place itself under the control of another, or when such agreement has been terminated. On the other hand it is equally absurd to complain when a group of people have joined together and set a standard. If you join their group, and afterwards decide that you do not like their standards, then you have only two choices; conform to the standard or quit. You have no business telling the original group to lower their standards.

Magick is not a threat to any sane individual. It is likewise no threat to Christianity or any other religion. Ideally, Magick would give an individual, be he Christian, Moslem, Jew or Pagan, a broader understanding and

affinity for his religion (if he has any). Magick, per se, is not a religion, it is an Art. Like any art-form or other human ability, it can be used in a number of ways. Is the manufacture of engravings considered Anti-Religious? I think not, yet there are those persons who have used the art of Engraving to the detriment of a given religion, Church, or belief. Does this give rise to a great tumult of protest that engraving should be banned, and that Engravers should be prosecuted, burned at the stake, etc.? Certainly not. Of course, good Art and good artists are a slight threat to poor Art and not-so-good artists, in the simple field of competition for acknowledgment. Most good artists tend to bend over backward to HELP the not-so-good artist, rather than to exploit him. Good Art is only a threat to the pseudo-artist. Magick is only a threat to those who falsely claim to work Magick, or those who attempt to use Magick as a cover for some other activity which has nothing to do with Magick.

Let me again state, that there is no correlation, positive or negative, between Magick and a given single religion. It is true, that in ancient times all of the real Magick was done by persons in the Church, simply because such Churchmen were the only literate people who had the means, education and spare time with which to do Magick.

All Religions have a Magickal base or origin. Most Religions also contain either symbolic Magick or the degenerated symbolism of Magick, somewhere in their structure of dogma. Most Religions and all 'religious cults' contain some part or element which must be taken wholecloth, that is to say, accepted on 'faith' rather than on the evidence, and followed without interpretation, examination, or question. This also holds true for some organizations or schools of thought which have removed the partition between Religion and Magick. Organizations which have mixed Magick and Religion, will sometimes feel threatened by an organization which practices the Magick alone.

To the extent that an organization uses fear, secrecy, 'faith', or ignorance to bind its 'followers' to it, then it is to the same extent that those 'followers' are susceptible to 'subversion' (or liberation) by empirical evidence, or an impirical approach. If that empirical evidence tends to support your religion, fine. If not, that is your problem. Perhaps you don't know enough about your own religion.

This, of course, gives rise to a new series of questions concerning individual credulity. I am curious about how many people in a given 'faith' have studied the origins or history of such 'faith'. From what I have seen, perhaps as many as 1% on a national average. Unfortunately, persons in the 'fringes' or even 'the Occult' appear to fall far below this already small figure. Furthermore, of this small percentage, how many have studied the origins and history of a 'faith' from a critical viewpoint?

## OF CREDULITY AND INCREDULITY.....

By Fra. Zarathustra, GM, T.O.T.

I am continually amazed at the desire of many people to fool themselves. When given a choice between the real tradition system and a synthetic, most choose the synthetic. Some others, still wishing to fool themselves, deny the existence of both the true and the synthetic.

Meric Casaubon, in 1688 published a book on this very subject, regarding the superstitions rampant in London at that time. Allowing for the differences of language and editorial style, he could have been writing about a large segment of the American population today.

Why is it, that nominally sane, sensible people, who usually use their logical, critical facilities in normal every-day living, when confronted with a situation that even approached the area of Religion, Mysticism, "The Occult" or even some branches of Philosophy, shut off that very facility that makes Philosophy so interresting: Rational Thought? I am at a loss to explain this sudden and drastic shift in mental modalities exhibited by most normally sane people.

A modern example of this skewed thinking, would be the assumption by most people that Magick is "bad" or necessarily anti-christian (or anti-anything). Religion as well as all Science, spring from ancient (and primitive) Magick. Obviously, that which becomes known through Human inquiry, is no longer 'unknown'. Such knowledge is 'natural' instead of 'supra-natural'. Why then do persons in the 'sciences' tend to deny that there is something more to explore? (I note with satisfaction, that the U.S. Patent Office has not been required to close its doors, due to a lack of inventions and discoveries, as was suggested not so long ago.) Most particularly, why do persons engaged in religious pursuits tend to be the loudest denouncers of anybody else's pursuits, religious or otherwise.

By what right does a man or group of men enforce their morals and ethics upon some other man or group of men? Especially when there was no prior agreement for one group or person to place itself under the control of another, or when such agreement has been terminated. On the other hand it is equally absurd to complain when a group of people have joined together and set a standard. If you join their group, and afterwards decide that you do not like their standards, then you have only two choices; conform to the standard or quit. You have no business telling the original group to lower their standards.

Magick is not a threat to any sane individual. It is likewise no threat to Christianity or any other religion. Ideally, Magick would give an individual, be he Christian, Moslem, Jew or Pagan, a broader understanding and

affinity for his religion (if he has any). Magick, per se, is not a religion, it is an Art. Like any art-form or other human ability, it can be used in a number of ways. Is the manufacture of engravings considered Anti-Religious? I think not, yet there are those persons who have used the art of Engraving to the detriment of a given religion, Church, or belief. Does this give rise to a great tumult of protest that engraving should be banned, and that Engravers should be prosecuted, burned at the stake, etc.? Certainly not. Of course, good Art and good artists are a slight threat to poor Art and not-so-good artists, in the simple field of competition for acknowledgment. Most good artists tend to bend over backward to HELP the not-so-good artist, rather than to exploit him. Good Art is only a threat to the pseudo-artist. Magick is only a threat to those who falsely claim to work Magick, or those who attempt to use Magick as a cover for some other activity which has nothing to do with Magick.

Let me again state, that there is no correlation, positive or negative, between Magick and a given single religion. It is true, that in ancient times all of the real Magick was done by persons in the Church, simply because such Churchmen were the only literate people who had the means, education and spare time with which to do Magick.

All Religions have a Magickal base or origin. Most Religions also contain either symbolic Magick or the degenerated symbolism of Magick, somewhere in their structure of dogma. Most Religions and all 'religious cults' contain some part or element which must be taken wholecloth, that is to say, accepted on 'faith' rather than on the evidence, and followed without interpretation, examination, or question. This also holds true for some organizations or schools of thought which have removed the partition between Religion and Magick. Organizations which have mixed Magick and Religion, will sometimes feel threatened by an organization which practices the Magick alone.

To the extent that an organization uses fear, secrecy, 'faith', or ignorance to bind its 'followers' to it, then it is to the same extent that those 'followers' are susceptible to 'subversion' (or liberation) by empirical evidence, or an impirical approach. If that empirical evidence tends to support your religion, fine. If not, that is your problem. Perhaps you don't know enough about your own religion.

This, of course, gives rise to a new series of questions concerning individual credulity. I am curious about how many people in a given 'faith' have studied the origins or history of such 'faith'. From what I have seen, perhaps as many as 1% on a national average. Unfortunately, persons in the 'fringes' or even 'the Occult' appear to fall far below this already small figure. Furthermore, of this small percentage, how many have studied the origins and history of a 'faith' from a critical viewpoint?

Why is it, that the three largest 'Churches' in the world, have 'must not read' lists? What are they afraid of? Why do 99% of the people turn off their mind at the mention of 'miracle'?

The practice of Magick would (hopefully) train an individual to use and train his intellect as well as his psychic potential. The proper practice of Magick makes use of Science and the Scientific Principle. The only 'faith' involved would be the self-reliant individual's 'faith' in his own ability to produce empirical evidence.

There is one pitfall regarding the practice of Magick, when done by a novice, alone. There is no-one to check on the objectivity of his evidence. The hazard is that the student in his eagerness may end up fooling himself. In the beginning, a student should have an instructor who is physically present during training sessions. The student should also keep meticulous records and notes, for the same reason; to prevent self-delusion.

The alternative to all of this, is to fall prey to unchecked ego-mania and insanity, both to the detriment of the Art and the individual. There are far too many examples of this syndrome presently available, for us to choose other than as we have outlined above. There is no other way for Magick to become a practical, usefull tool in the daily life of the practitioner.

\* \* \* \* \*

#### RECOMMENDED READING LIST (Ceremonial Magick)

- Conway, David: Magick, An Occult Primer; Bantam Books, New York; Chapters 1 through 5 only. (many errors in remainder)
- † Cavendish, Richard: The Black Arts; G.P.Putnam, New York (also in paper) Read chapters 1,3,6 & 7 first, then the rest.
- † Butler, W.E.: The Magician, His Training & Work; Wilshire Books, N.Hollywood Read all.
- † Gray, W.G.: The Simplified Guide to The Holy Tree of Life; Labrys Press, Pasadena, Ca. Read All.
- † Crow, W.B.: A Fascinating History of Witchcraft, Magic & Occultism; Wilshire Books, N. Hollywood, Ca. Read all.
- † Butler, E.M.: Ritual Magic; Newcastle Publishing Co., Hollywood, Ca. Read All.
- † Hartman, Franz (M.D.): Magic, Black & White; Newcastle Publishing Co., Hollywood, Ca. Read all.
- † Shah, Idries: The Secret Lore of Magic; Frederick Muller Ltd., London Read all.
- † Regardie, F.I.: The Middle Pillar; Llewellyn, St.Paul, Mn. Read all.  
The Tree of Life; Samuel Weiser, New York. Read all
- † Waite, A.E.: The Book of Ceremonial Magic; deLaurence, Chicago. Read all.
- † Mathers, S.L.(trans):The Sacred Magic of Abra-Mellon the Mage; deLaurence Chicago, Read All.

(† available from The Magick Circle, -- see ads elsewhere in this issue)

THE NOTEBOOK (Cont. from Page 5.)

SEPHIROTH	PLANET	QLIPPOTH	MEANING	GOETIA DEMONS
① KETHER	INFINITY ∞	THAUMIEL	TWO CONTENDING FORCES	
② CHOKMAH	ZODIAC ♊	GHOGIEL	THE HINDERERS	
③ BINAH	SATURN ♄	SATARIEL ZAZEL	THE CONCEALERS	KNIGHTS FURCUS
④ CHESED	JUPITER ♃	AGSHEKELOH HISMAEL	THE BREAK- ERS IN PIECES	ALL PRINCES AND PRELATES VASSAGO
⑤ GEBURAH	MARS ♂	GOLOHAB BARTZABEL	THE BURNERS	ALL EARLS AND COUNTS
⑥ TIPHARETH	SUN ☉	TAGIRIRON SORATH	THE DISPUTERS	ASMODEUS AND ALL KINGS
⑦ NETZACH	VENUS ♀	G HARAB KEDEMEL ♀	THE RAVENS OF DEATH	ASTAROTH AND ALL DUKES
⑧ HOD	MERCURY ☿	SAMAEL TAPHTHARTH- ARATH ♀	THE LIAR OR POISON OF GOD	ALL PRESIDENTS
⑨ YESOD	MOON ☾	GAMALIEL LILITH ☾	THE OBSCENE ONES	ALL MARQUISES
⑩ MALKUTH	EARTH ♁			

Many unusual items and excerpts from private collections will be presented in this section, in future issues.

## MORE INCOME for YOU

\$\$ Lawfully, Effortlessly, "for Good Cause" \$\$

Would you be interested in an extra \$50,000 of "spendable" income? ...or maybe \$25,000, or maybe \$5,000....

If the income you now show on line 48 of your married/joint income tax return is \$400,000, it is no problem whatsoever to put into your pocket an extra \$50,000 of what would normally be claimed by the government. If it is \$200,000, there is no problem whatsoever to put into your pocket an extra \$25,000 of what would normally be taken by the government...etc....

"But I am a small man!" you complain. —YOU will save less in taxes because you normally pay less in taxes. But it is no problem to save \$500 on a \$10,000 income even if you are single with only one exemption; or to save \$250 even if you file jointly and have six exemptions. Even if you have a tax-reportable income of only three or four or five thousand dollars there are still savings...

These savings are strictly according to law.

Association of Churches of the Tolerants: ACT  
Or write to ACT c/o This Magazine.

POB 36099  
Houston--77036

SIMILAR PLANS FOR  
CONVERTING TAXABLE  
INCOME TO UNTAXABLE  
INCOME AVAILABLE FROM  
"THE WHITE LIGHT".



SEPHIROTH	PLANET	QLIPPOTH	MEANING	GOETIA DEMONS
① KETHER	INFINITY ∞	THAUMIEL	TWO CONTENDING FORCES	
② CHOKMAH	ZODIAC ♊	GHOIEL	THE HINDERERS	
③ BINAH	SATURN ♄	SATARIEL ZAZEL	THE CONCEALERS	KNIGHTS FURCUS
④ CHESED	JUPITER ♃	AGSHEKELOH HISMAEL	THE BREAK- ERS IN PIECES	ALL PRINCES AND PRELATES VASSAGO
⑤ GEBURAH	MARS ♂	GOLOHAB BARTZABEL	THE BURNERS	ALL EARLS AND COUNTS
⑥ TIPHARETH	SUN ☉	TAGIRIRON SORATH	THE DISPUTERS	ASMODEUS AND ALL KINGS
⑦ NETZACH	VENUS ♀	G HARAB KEDEMEL ♀	THE RAVENS OF DEATH	ASTAROTH AND ALL DUKES
⑧ HOD	MERCURY ☿	SAMAEL TAPHTHARTH- ARATH ♀	THE LIAR OR POISON OF GOD	ALL PRESIDENTS
⑨ YESOD	MOON ☾	GAMALIEL LILITH ☾	THE OBSCENE ONES	ALL MARQUISES
⑩ MALKUTH	EARTH ♁			

Many unusual items and excerpts from private collections will be presented in this section, in future issues.

## MORE INCOME for YOU

**\$\$ Lawfully, Effortlessly, "for Good Cause" \$\$**

Would you be interested in an extra \$50,000 of "spendable" income? ...or maybe \$25,000, or maybe \$5,000....

If the income you now show on line 48 of your married/joint income tax return is \$400,000, it is no problem whatsoever to put into your pocket an extra \$50,000 of what would normally be claimed by the government. If it is \$200,000, there is no problem whatsoever to put into your pocket an extra \$25,000 of what would normally be taken by the government...etc....

"But I am a small man!" you complain. --YOU will save less in taxes because you normally pay less in taxes. But it is no problem to save \$500 on a \$10,000 income even if you are single with only one exemption; or to save \$250 even if you file jointly and have six exemptions. Even if you have a tax-reportable income of only three or four or five thousand dollars there are still savings...

These savings are strictly according to law.

Association of Churches of the Tolerants: A C T

Or write to ACT c/o This Magazine.

POB 36099  
Houston--77036

SIMILAR PLANS FOR  
CONVERTING TAXABLE  
INCOME TO UNTAXABLE  
INCOME AVAILABLE FROM  
"THE WHITE LIGHT".

THIS SIZE AD COULD  
BE YOURS FOR \$2.50  
PER ISSUE. See rates  
given below.

## ADS

OCCULT DEGREES  
and diplomas, from \$5.  
SASE to The Pasadena  
Institute of Metaphysics  
c/o: The White Light

CLASSIFIED RATES 10¢/word  
Minimum \$1.00. Blind Boxes  
\$1.00 extra/per ad/per issue  
Display advertising: copy to  
be camera-ready and 1.35  
times desired size. Price  
after reduction \$2.50/col inch  
All rates, subject to change  
without notice. Advertiser  
is responsible for all claims  
made. TWL assumes no  
responsibility for content of  
advertisement.

GOLDEN DAWN Type Lodge  
is now in operation in the  
Los Angeles area. The  
Gnostic Brotherhood of  
Light (G.B.L.). For  
Information write GBL c/o  
The Hollywood Theosophical  
Center, 2560 N. Beachwood  
Drive, Hollywood, Ca. Attn:  
Dr. Stephan A. Hoeller.

FOR SALE OR RENT (no commissions, no brokers)  
Quaint 3Br, 1&1/2 bath home WITH ATTACHED  
20 X 30 FOOT TEMPLE. Ideal for Magickal lodge,  
Coven, Church, etc. Also has space for Library, Den  
or Office. Fenced back yard, Fruit Trees, Ample  
Parking. Pasadena area. \$15,500. (\$3,000 down) or  
Rent for \$180/month. Terms available. S.A.S.E. to  
Dept H, THE WHITE LIGHT.

OCCULT Supplies, Books,  
Tapes, etc. Catalog 25¢,  
Dealers Wanted. Box 3125  
Pasadena, Ca. 91103

SUBSCRIBE TO THE WHITE  
LIGHT. \$6.00/year. Tax-  
deductable. We also rec-  
ommend other Occult pubs;  
such as The Green Egg,  
Earth Religion News, Gnostica  
News, and "X".

QUALIFIED Lecturers available  
to speak to Youth Groups or  
Civic Organizations, concerned  
with the Occult. Write box L,  
THE WHITE LIGHT.

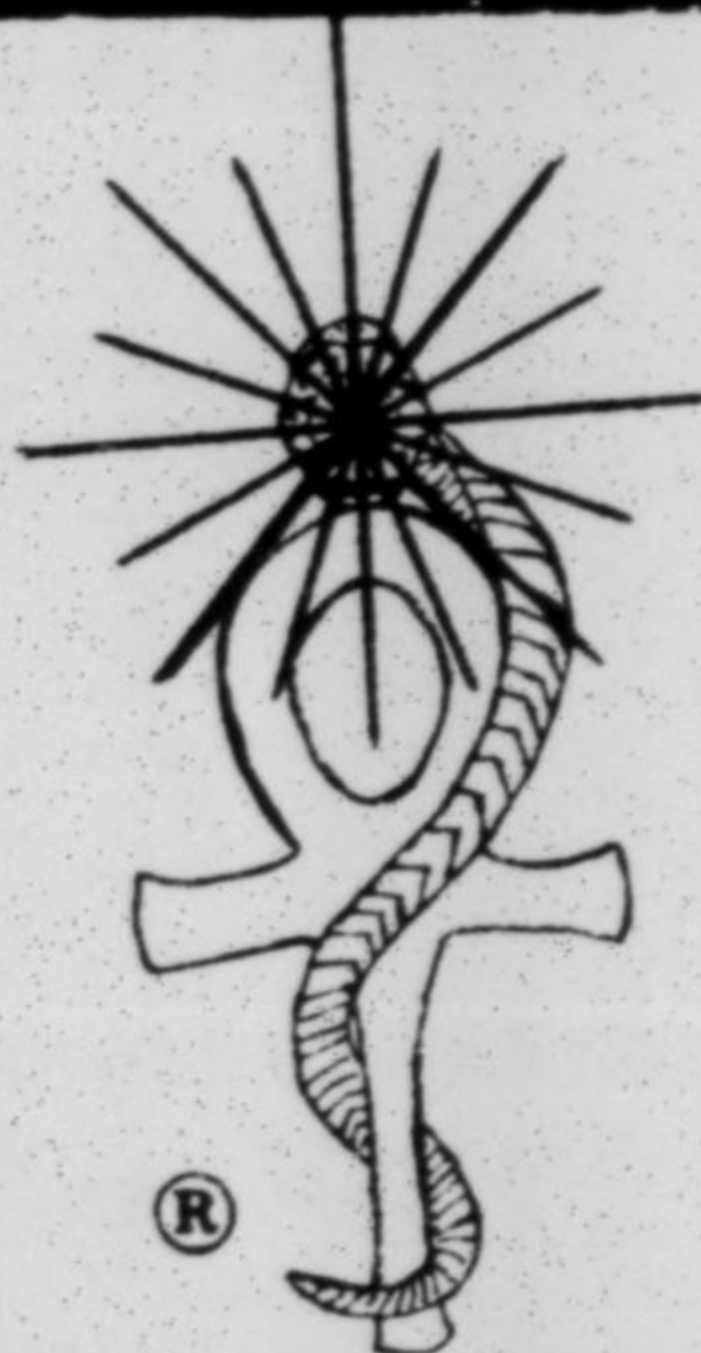
EXCHANGE subscriptions  
with Occult oriented Pubs.  
Wanted. The White Light.

THE MAGICK CIRCLE  
Occult Shop, 747 N. Lake  
Pasadena, Ca. 91104  
announces its new hours;  
11AM to 5PM, Monday  
through Saturday. Closed  
Sundays and most Holidays.

EXCHANGE ADS wanted.  
We will publish on a  
space available basis.  
Contact Rev. White, Ed,  
THE WHITE LIGHT

### NEED ACTION NOW?

"For I can do all things, through Christ which strengthens me".  
"And, if I be lifted up, I'll draw all men unto me". For any or  
all conditions, address letters to: REV. BEN, P.O. Box 1615,  
Altadena, Ca. 91001, or call for appointment (213) 681-6497.



### DEALERS! SHOP OWNERS!

Sell THE WHITE LIGHT and receive 50%.  
Undamaged copies may be returned, Minimum  
order is 10 copies, payment in advance. For  
more information, contact the circulation Dept.  
THE WHITE LIGHT, Bx 3125, Pasadena, Ca.

**THE TEMPLE OF TRUTH**, unlike most other Orders and Magickal Lodges, is essentially *unstructured*. It has no "grades," issues no pretentious certificates, and has no fixed curriculum. The Temple of Truth exists primarily for its students and members, and hence does not get involved in the internal workings of other organizations. The Temple of Truth takes no part in political quarrels which sweep through the contemporary American Occult scene. Likewise, we abjure most of the "traditional" secrecy which all too frequently hides ineptitude and selfishness on the part of those purporting to know it all. What little is kept secret is simply for the safety of the individual student, and no information is "forever denied" to a promising student. Each individual is free to select his own course of study, as well as the rate at which he chooses to pursue it. This "independent study" concept allows the staff as well as the students considerable flexibility. The student defines what it is he wishes to do and then later submits a report on the results he has achieved. Selections from these reports may be published at a later date.

Individual students are encouraged to adopt the scholastic method but not required to do so. In any event, the lack of rigor will not bar the student from opportunities to test his theories. Empirical results are the cornerstones of the student's progress.

Flexibility is also stressed in the admission standards of the organization, the main emphasis being on a better than average moral and ethical behaviour on the part of the individual applicant. The applicant's motivation should be a desire for spiritual development rather than an egotistic craving to be called a "High Priest" or a "High Priestess," or the lust for "Powers"—usually over others—in lieu of Self-control.

The initial series of classes is open to all, members and non-members alike. The student is encouraged to practice his magick in his own home as a part of his everyday life. This emphasis on individual practice (after an initial period of instruction) is one of the largest differences between The Temple of Truth, and other Magickal organizations operating in the present Occult spectrum. Membership in The Temple of Truth is non-exclusive, or in other words, members of other organizations can join ours. Dues are low because we are not supporting a large staff or headquarters complex.

The Temple of Truth is sponsored by The Light of Truth Church, a duly licensed and incorporated Religious Institution. The Church is neither evangelistic nor fundamentalist in the usual sense. We do proselytize the basic dignity of Man, and we recognize the subjectivity of what most people call "truth." The Church's teachings, being cabalistic, are compatible with Christian, Moslem, and Hebrew religious tenets.

Dues, donations, and so forth to either the Temple or the Church are entirely tax-exempt, under both State and Federal law.

The Church also operates a Gift and Occult Supply shop, The Magick Circle, at 747 North Lake Ave., Pasadena, California.

Interested persons are invited to call, write or come by the shop at anytime during our business hours which are from noon to six P.M. daily except Sunday. Our telephone number is (213)-794-6013, an unlisted telephone number. Correspondence may also be addressed to our private Post Office Box, 3125, Pasadena, CA 91103.

Introductory classes in Magick are presently open, and prospective students may examine the class outline which is on display at The Magick Circle shop. The class sign-up sheet is also posted.

THIS SIZE AD COULD  
BE YOURS FOR \$2.50  
PER ISSUE. See rates  
given below.

## ADS

OCCULT DEGREES  
and diplomas, from \$5.  
SASE to The Pasadena  
Institute of Metaphysics  
c/o: The White Light

CLASSIFIED RATES 10¢/word  
Minimum \$1.00. Blind Boxes  
\$1.00 extra/per ad/per issue  
Display advertising: copy to  
be camera-ready and 1.35  
times desired size. Price  
after reduction \$2.50/col inch  
All rates, subject to change  
without notice. Advertiser  
is responsible for all claims  
made. TWL assumes no  
responsibility for content of  
advertisement.

FOR SALE OR RENT (no commissions, no brokers)  
Quaint 3Br, 1&1/2 bath home WITH ATTACHED  
20 X 30 FOOT TEMPLE. Ideal for Magickal lodge,  
Coven, Church, etc. Also has space for Library, Den  
or Office. Fenced back yard, Fruit Trees, Ample  
Parking. Pasadena area. \$15,500. (\$3,000 down) or  
Rent for \$180/month. Terms available. S.A.S.E. to  
Dept H, THE WHITE LIGHT.

OCCULT Supplies, Books,  
Tapes, etc. Catalog 25¢,  
Dealers Wanted. Box 3125  
Pasadena, Ca. 91103

EXCHANGE subscriptions  
with Occult oriented Pubs.  
Wanted. The White Light.

SUBSCRIBE TO THE WHITE  
LIGHT. \$6.00/year. Tax-  
deductable. We also rec-  
ommend other Occult pubs;  
such as The Green Egg,  
Earth Religion News, Gnostica  
News, and "X".

THE MAGICK CIRCLE  
Occult Shop, 747 N. Lake  
Pasadena, Ca. 91104  
announces its new hours;  
11AM to 5PM, Monday  
through Saturday. Closed  
Sundays and most Holidays.

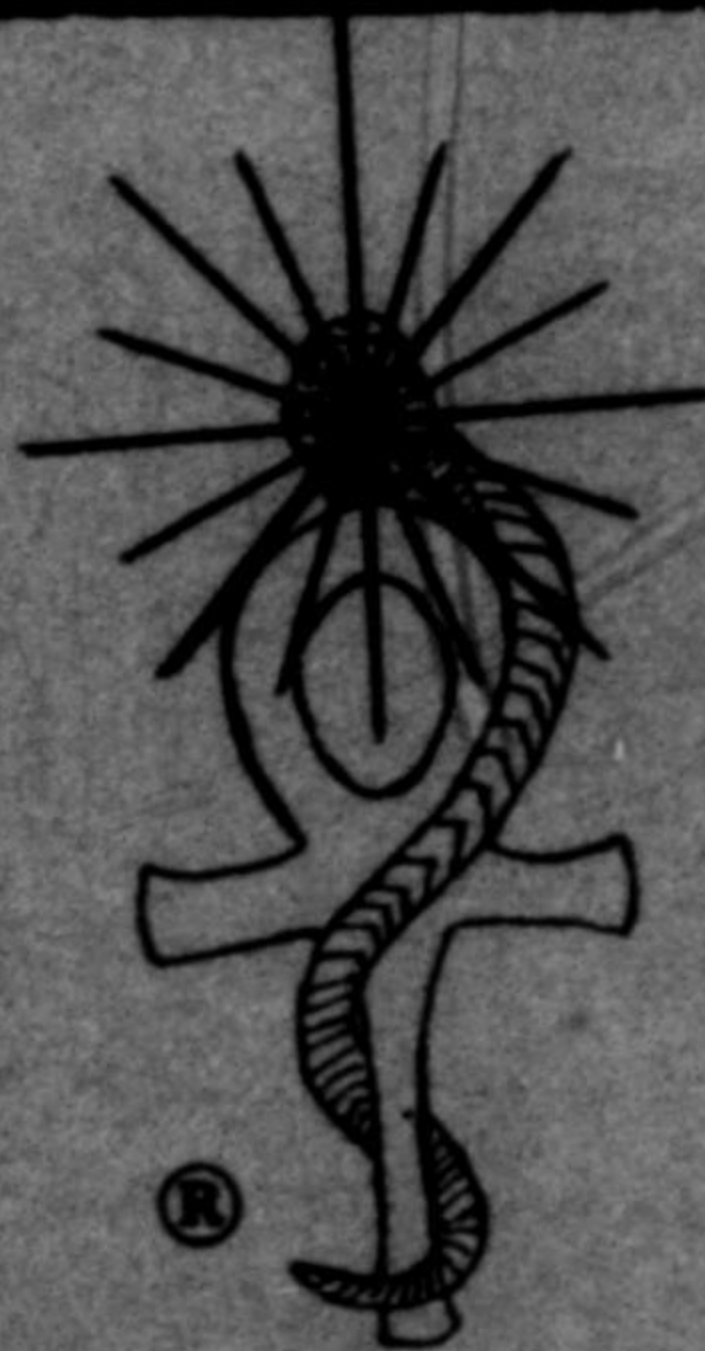
GOLDEN DAWN Type Lodge  
is now in operation in the  
Los Angeles area. The  
Gnostic Brotherhood of  
Light (G.B.L.). For  
Information write GBL c/o  
The Hollywood Theosophical  
Center, 2560 N. Beachwood  
Drive, Hollywood, Ca. Attn:  
Dr. Stephan A. Hoeller.

QUALIFIED Lecturers available  
to speak to Youth Groups or  
Civic Organizations, concerned  
with the Occult. Write box L,  
THE WHITE LIGHT.

EXCHANGE ADS wanted.  
We will publish on a  
space available basis.  
Contact Rev. White, Ed,  
THE WHITE LIGHT

### NEED ACTION NOW?

"For I can do all things, through Christ which strengthens me".  
"And, if I be lifted up, I'll draw all men unto me". For any or  
all conditions, address letters to: REV. BEN, P.O. Box 1615,  
Altadena, Ca. 91001, or call for appointment (213) 681-6497.



### DEALERS! SHOP OWNERS!

Sell THE WHITE LIGHT and receive 50%.  
Undamaged copies may be returned, Minimum  
order is 10 copies, payment in advance. For  
more information, contact the circulation Dept.  
THE WHITE LIGHT, Bx 3125, Pasadena, Ca.

**THE TEMPLE OF TRUTH**, unlike most other Orders and Magickal Lodges, is essentially *unstructured*. It has no "grades," issues no pretentious certificates, and has no fixed curriculum. The Temple of Truth exists primarily for its students and members, and hence does not get involved in the internal workings of other organizations. The Temple of Truth takes no part in political quarrels which sweep through the contemporary American Occult scene. Likewise, we abjure most of the "traditional" secrecy which all too frequently hides ineptitude and selfishness on the part of those purporting to know it all. What little is kept secret is simply for the safety of the individual student, and no information is "forever denied" to a promising student. Each individual is free to select his own course of study, as well as the rate at which he chooses to pursue it. This "independent study" concept allows the staff as well as the students considerable flexibility. The student defines what it is he wishes to do and then later submits a report on the results he has achieved. Selections from these reports may be published at a later date.

Individual students are encouraged to adopt the scholastic method but not required to do so. In any event, the lack of rigor will not bar the student from opportunities to test his theories. Empirical results are the cornerstones of the student's progress.

Flexibility is also stressed in the admission standards of the organization, the main emphasis being on a better than average moral and ethical behaviour on the part of the individual applicant. The applicant's motivation should be a desire for spiritual development rather than an egotistic craving to be called a "High Priest" or a "High Priestess," or the lust for "Powers"—usually over others—in lieu of Self-control.

The initial series of classes is open to all, members and non-members alike. The student is encouraged to practice his magick in his own home as a part of his everyday life. This emphasis on individual practice (after an initial period of instruction) is one of the largest differences between The Temple of Truth, and other Magickal organizations operating in the present Occult spectrum. Membership in The Temple of Truth is non-exclusive, or in other words, members of other organizations can join ours. Dues are low because we are not supporting a large staff or headquarters complex.

The Temple of Truth is sponsored by The Light of Truth Church, a duly licensed and incorporated Religious Institution. The Church is neither evangelistic nor fundamentalist in the usual sense. We do proselytize the basic dignity of Man, and we recognize the subjectivity of what most people call "truth." The Church's teachings, being cabalistic, are compatible with Christian, Moslem, and Hebrew religious tenets.

Dues, donations, and so forth to either the Temple or the Church are entirely tax-exempt, under both State and Federal law.

The Church also operates a Gift and Occult Supply shop, The Magick Circle, at 747 North Lake Ave., Pasadena, California.

Interested persons are invited to call, write or come by the shop at anytime during our business hours which are from noon to six P.M. daily except Sunday. Our telephone number is (213)-794-6013, an unlisted telephone number. Correspondence may also be addressed to our private Post Office Box; 3125, Pasadena, CA 91103.

Introductory classes in Magick are presently open, and prospective students may examine the class outline which is on display at The Magick Circle shop. The class sign-up sheet is also posted.

Magickal Equipment - Occult Supplies - Oils

Amulets & Talismans - Books - Candles - Crystal Balls  
Incenses & Aromatic Gums - Jewelry - Perfumes  
Pipes - Records & Tapes - Spell Kits - Tarot Cards

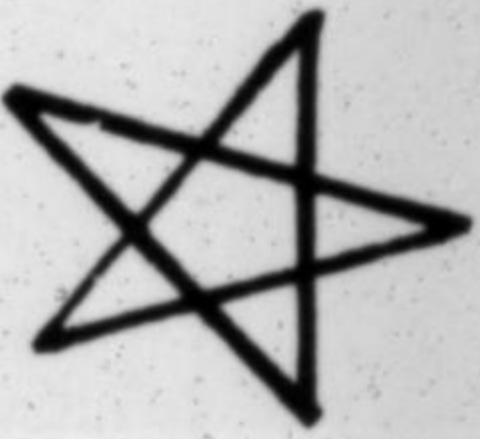
--- and many other items can be found at

**The Magick Circle**

Occult Shop

**747 N. LAKE AVE.**

**Pasadena, Calif. 91104**



The following services are also offered:  
Personal Consultation - Tarot Reader  
Practicing Magician & Advisor available  
Classes & Instruction in several areas  
**Catalog 25c. ZIP Code Please !**

Phone: 794-6013

Hours: Noon to 6 PM, M-Sat

Curios - Fortune Telling Cards - Gifts - Herbs

**FOR SALE BY OWNER** (no commissions)  
Quaint 3 Br, 1&1/2 bath home with **ATTACHED**  
20 X 30 FOOT TEMPLE. Ideal for Magickal  
Lodge, Coven, or Church. Also has space for  
Den, Library or Office. Fenced back yard, lots  
of parking, Fruit trees. Pasadena Area. \$15500.  
\$3000 down or Rent for \$180/month. S.A.S.E.  
to Dept H, THE WHITE LIGHT. (no brokers)

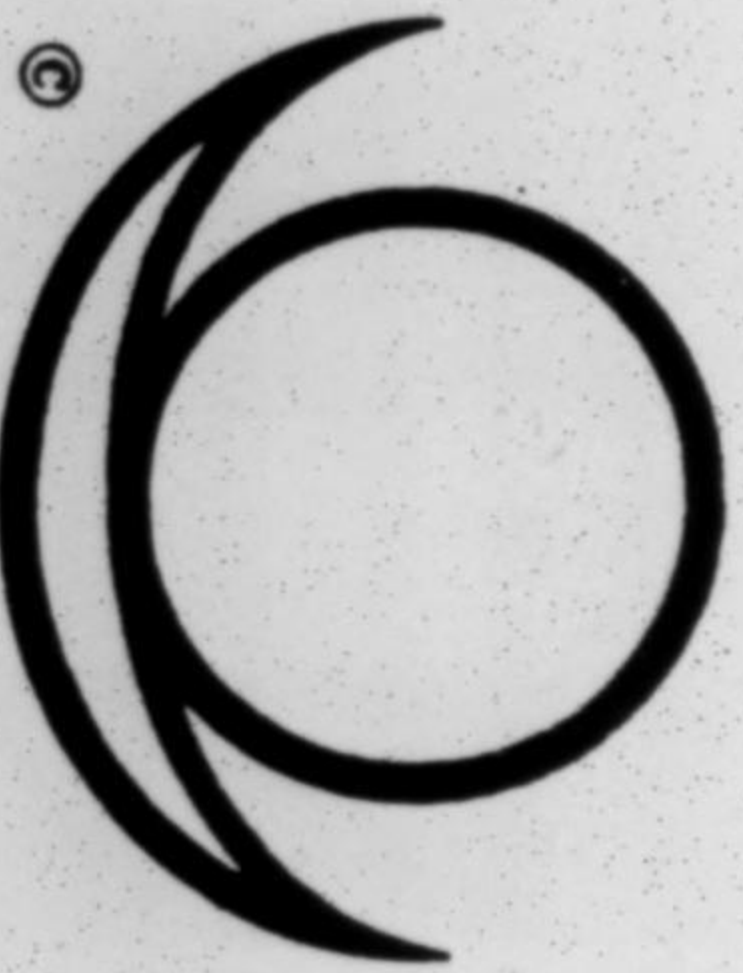
**ESCAPE THE BIGOTS. ESCAPE  
THE CRIPPLING TAXES. FORM  
YOUR OWN CHURCH WITHOUT  
ALL THE BOTHERSOME PAPER-  
WORK AND GOVERNMENTAL  
SNOOPING. RECEIVE ALL  
OF THE BENEFITS, THE SAME  
AS ANY OTHER CHURCH.  
CONVERT UP TO 93% OF YOUR  
TAXABLE INCOME TO TAX-  
EXEMPT CASH IN YOUR POCKET.  
=See advertisement page 11.=**



**Church of All Worlds**

Box 2953, St. Louis, Mo. 63130

**TAX-EXEMPT ORGANIZATIONS**  
formed for you. Assistance with all  
types of Religious Corporations. Send  
Stamped, Self-Addressed Envelope to:  
Business Technology, P.O. Box 3125  
Pasadena, California 91103

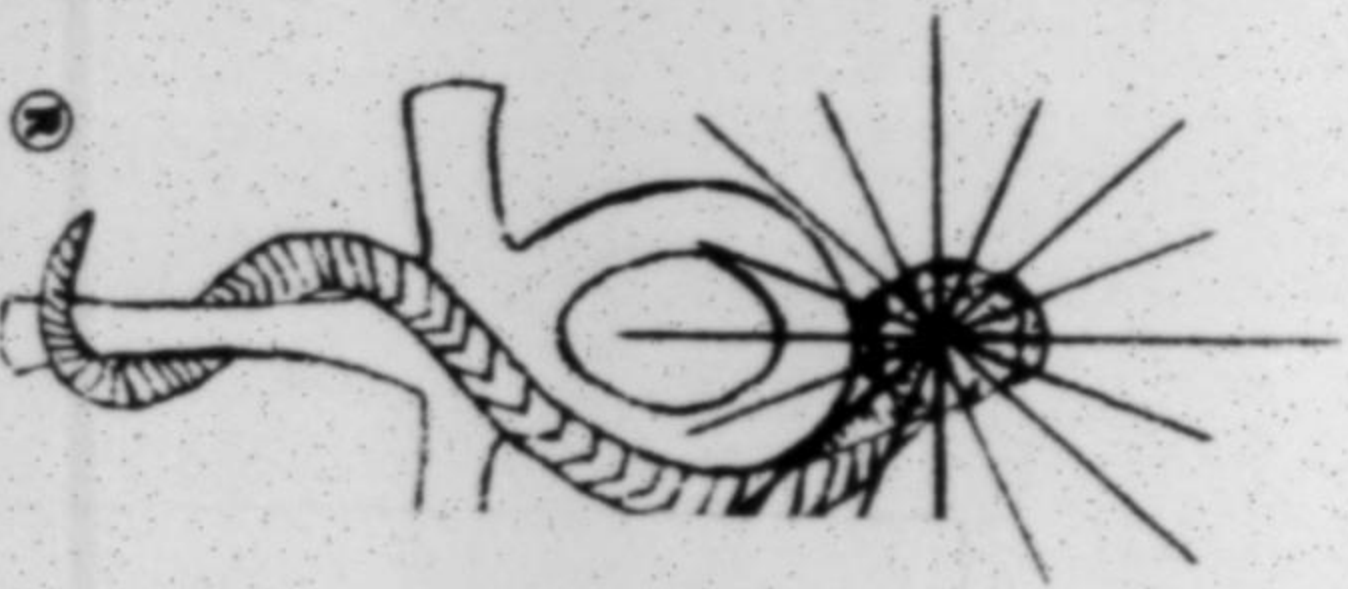


**THE CHURCH OF THE ETERNAL SOURCE**

P. O. BOX 7091, BURBANK, CALIFORNIA

**OCCULT DEGREES  
NOW OFFERED, WRITE TO THE  
PASADENA INSTITUTE OF METAPHYSICS  
c/o: The White Light**

**Flight of Truth Church**  
P. O. BOX 3125  
PASADENA, CALIF. 91103



"ADDRESS CORRECTION REQUESTED"

