



PSYCHOTRONICS, INFORMATION AND INFORMATION FIELD  
REJDA, Zdeněk, PhD.,  
Prague, Czechoslovakia

### Psychotronics and Information

If we ponder the three basic groups of psychotronic phenomena, interactions at a distance between organisms (represented above all by telepathy and biotherapy), interactions at a distance between the living and inanimate matter (represented in the first place by psychokinesis) and interactions at a distance between organisms and information properties of the outer environment (represented by clairvoyance), then we encounter in all of these a certain agent (agens) of energetic character (1). But this agent in contrast to other kinds of energy has its specific properties: on the basis of a certain impulse, be it conscious, the target object (perceptible, object, environment) intervenes, i.e. it can be directed and, in addition, this agent carries the pertaining information. Of the field of electromagnetic waves it is the laser beams that are closest to this presentation. In this consideration let us leave aside the character of the energetic agent, although we already know, at present, that the human organism generates electromagnetic waves in many ranges: at one end there are the 10 Hz waves and at the other end those of about 10 GHz. Let us consider information as an independent distinctive and active manifestation of the living matter.

We can see it best on examples. In spontaneous telepathy which is mostly linked up with a psychically oriented situation, the energetic agent reaches the recipient and according to the intensity of spontaneous telepathy, the recipient either realizes that something disagreeable is taking place, or knows which person is concerned and can even accurately state what happened to that person. He is subjected to some sort of live image.

In experiments with psychokinesis which we conducted with N.S. Kilagina (2), the energetic agent generated by her organism was able to rotate but one needle of the selected compass when we used two

compasses placed side by side, while the other needle did not move at all. We presented to other a figure of the sum made up of matches placed on a table, and she was able to shift out of this grouping but one predetermined match and move it in a psychokinetic way both towards and away from her.

We conducted an experiment in diagnosing at a distance with an experimental person with the use of clairvoyance, while nobody of those present, including the experimental person, knew that patient (the experimental person was told but the name and age of the patient). The experimental person was able not only to make a diagnosis, but also to furnish an accurate picture of physiological parameters of the organism (erythrocyte and leucocyte count, of thrombocytes, monocytes, blood circulation speed, blood pressure, liver test, etc.) (3) In this case the energetic agent had not only to be directed, but after reaching the target, it had to subtract the necessary information and bring it back. Now we have but the actual clairvoyance in mind (we do not consider retrocognition and precognition).

The above-mentioned examples lead us to the conclusion that we must reckon with information also as an independent quality proper to the living matter. The degree of the living matter organization is matched by the quality level of the information content. E.g. interactions between cellular tissues or bacteria are in essence binomial: multiplication induced in one part will create a mirror image in the sister part. Facing each other are cell cell, the level of equal quality. The n o, n o, y e s, y e s reaction. In Backster's experiment there is a man on one side and a plant on the other side (4). The man can modify his positive or negative relation to the plant so that it takes many forms - to water the plant, to dig over the soil, to open the window to let in fresh air or burn, cut leaves, to pour acid over it, etc. The plant's response to the man's firm intention, followed always by action, is again only binomial. Complex information coming from the man is reduced by the plant for its own sake to yes (good), no (bad). More complicated information relations exist already between man and animals. They are quite specific between people.

We can say that same as consciousness is distinctive, which, it is true, is interconnected in man with his material and energetic processes, but cannot be reduced to them, so is information distinctive when carried by various kinds of energy and material manifestations generated by the human organism. These, probably in the majority of cases in the experiments

the majority of cases in the experiments followed up, will not exceed the scale of the known kinds of energy, but the living organism, in our case man, is able to lend them a new quality and utilize them for carrying information, approximately just as we can utilize ferromagnetic substances for transferring magnetism. It follows from this that in the future man cannot be considered as a passive carrier of information, e.g. that by measuring a whole range of parameters we can obtain information about his psychic and somatic state, and also we cannot consider him in the traditional meaning as a producer of information, which he imparts in writing, orally, by mimicking, etc., but we must understand him as being able to impress information as a specific quality by the transference agent, when these agents detached from man thanks to the information carried work as if independently and intelligently.

In some cases the transference agent appears as if having wider possibilities compared to the known kinds of energy as understood by the contemporary physics. The character of many experiments (telepathic transference over long distance, or clairvoyant obtaining of information from a great distance), because they exceed the scope of energetic possibilities from the viewpoint of the contemporary physics, makes us wonder whether in certain given conditions the information proper does not in fact become an active distinctive agent.

Conclusion: Energetic processes connected with psychotronic phenomena have their own specific property, the possibility to carry information, but even many of psychotronic phenomena make us ask whether the information proper is not an independent transference agent.

We tackle information from many viewpoints, now it is necessary to reckon also with the viewpoint of psychotronics.

#### Psychotronics and Information Field

When analyzing the retrocognitive responses of good experimental persons we are surprised that their responses often are a faithful reproduction of the activities of deceased persons. The majority of experimental persons believe that they have become mediators between the deceased person and us and that they are talking with him. As a matter of fact even the selection of words, syntax, etc.

correspond to the character of the deceased and even his way of thinking. E.g. if we ask the experimental person an actual question he will reply as if he really were Beethoven, if he is convinced at the moment that he is in contact with him. Sometimes even conversation with the experimental person is impossible, if, e.g., the character of the questions is clearly outside the historical scope of the dead person whom the experimental person impersonates at the given moment, as he believes. We carried out experiments without number which have convinced us that with the aid of experimental persons long passed events can be reproduced. We have also ascertained analytically that not always a true reproduction is made, sometimes it is mixed up with free associations or imagination of experimental persons, if the answer to the question exceeded the "scope" of a given deceased person.

W. James (5) deals with a worldwide consciousness, A.C. Jung (6) with a collective and genetic memory. In spite of the fact that the reasons for determining the conception of a certain information bank with both were different, they felt the necessity of counting on a similar conception. Perhaps the one who progressed furthest in this direction was the lay Czech researcher B. Kafka (7) who following the advice of his best experimental person in the thirties already introduced the term of "protonation" (suggested by the author). He defined it with the help of the experimental person as follows:

"'Protonation' is a matter neither of a material nor a spiritual character (it is something in between). It is older than the primordial matter which it pervades and has an uncommon capability. It imprints accurately unto itself all deeds, thoughts, ideas and events which happened or existed in the world anywhere and at any time. 'Protonation' is their eternal notebook. Anything that ever happened connected with thought or purely material remains faithfully and vividly recorded on it for ever and with the help of a subject can again be seen, heard - in short experienced. Through the intermediary of the 'protonation' recording events of ages long past can be seen, quite candidly as at the present time."

In antiquity already the capabilities or states of sensitive individuals who thought that they were talking deceased persons made people believe that communicating with the dead was possible, which in the

middle of the past century contributed to a wide spread of spiritism.

There are two questions which must be differentiated: first - belief in life after death; an old philosophical problem which does not concern pur deliberation; second - belief in the possibility of communicating with the dead. This is indirectly the subject of our treatise. Let us start first with the feelings of experimental persons. They are convinced that they really communicate with the dead. They even take over their outer resemblance in expression, timber of voice, tempo of speech, etc. They improvise compositions the spirit of Beethoven, Mozart, in spite of their being quite unschooled in music; they paint faithfully in the Picasso vein, same as Rembrandt, etc. But an experimental person even in his response about a living person behaves exactly like that, e.g. in describing an actual person the left lid of the experimental person began to twitch, same as it was with the man whom he described. We know from the study of art that epigones exist who can truthfully imitate the style of their masters and it is very hard for them to get rid of it. From psychiatric literature we know that a patient perhaps for a few years behaves like quite another man. And then he is himself again.

A critical analysis of the published cases, even of the most completed ones, including our deeds remain preserved outside of us, this recording is independent of us, it can be read by a man only so far (living organism - animals in certain circumstances are frightened in experiments). Carriers of this recording as can be deduced from the experiment, are objects and environment.

We presume, therefore, the possibility of a communication with recording. We imagine this recording as a virtual structure. Only a man can make it dynamic and enliven it. Let us make an analogy with a film reel which we put into a projector. Before we start the projector and simultaneously switch on the projection lamp, nothing appears take place on the screen is in a statistical form on the reel of film. In our case the human organism "starts" and makes dynamic the above-mentioned recording, it is also the indispensable projection lamp and in addition seems to "play" itself and modifies the passive recording and amplifies it, in the same way as if a passive auditor would enter the screen and take an active part in the play. The possibility of dynamization of this recording probably depends on a certain energetic impulse whose source, or an involuntary emission of energy from the around, or an involuntary emission of energy from the surplus energy of a child's organism, from the

organism at the age of puberty (spontaneous cases), etc. A precondition for reading this recording is however a sensitive individual and the degree of his sensitivity who also utilizes and directs his own or other suitable sort of energy for the possibility of communication with the chosen recording.

B. Kafka tried to discover the mechanism (7) why just the sensitive individuals (media) are firmly convinced that at a certain moment they become a mediator between a certain dead person and arrives at the following supposition: a psychically and somatically balanced organism is in the so-called homogenous envelope of vital magnetism (8). If the homogeneity of this envelope is disturbed or is practically insensitive, then man easily turns to be sensitive and his lower subconscious sensitive "I" is pulled down and takes over the events and life of a man who once lived here, becomes the tool of his recorded deeds, pervades him, takes over his whole character and manifests itself in him as if it were the deceased himself. The conscious "I" is missing and the control by reason is entirely destroyed.

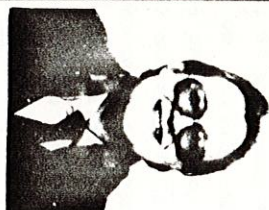
When reading information from the recording - information field - suggestion, autosuggestion, education and cultural tradition of the medium and those sitting around, play a rather significant role. This all determines the response and interpretation of the experimental person and the modes of communication with the information field. From our point of view reincarnation is nothing else but one of the variants of communications with the information field. Interpretation of this variant (reincarnation) as traditionally presented reflects above all the Indian cultural tradition. The cases described in detail and painstakingly (9) are but a solid proof of the existence of the information field.

In conclusion: Under the information field we understand the ability of a certain agent to keep an objective recording of events taking place at the present time, be they linked up with the living or inanimate matter. An organism at a certain stage of its development in suitable specific conditions can read information this field. The author considers the information field to be an objective reality.

References:

1. Bégidák, Z.: *Warum Psychotronik?*, Psychotronik No. O. 1976

2. Rejdač, Z.: Die psychokinetischen Phänomene von Nina Kulagina, Zeitschrift für Parapsychologie, No.2/1970
3. Perda, F.: See article in this Proceeding
4. Backster, C.: Evidence of a Primary Perception in Plant Life, International Journal of Parapsychology, Vol.10, N.4/8
5. James, W.: A pluralistic universe, 1909.
6. Jung, C.G.: Memories, Dreams, Reflections, Vintage Books, New York 1963.
7. Kafka, B.: Nové základy experimentální psychologie, Červený Kostelec, 1949.
8. Rejdač, Z.: From Vital Magnetism to Model Conception of Biological Plasma, see in this Proceeding.
9. Stevenson, I.: Twenty Cases Suggestive of Reincarnation. Proc. A.S.P.R. September, 1966.



ASPECTS OF COLLECTIVE SUBCONSCIOUSNESS  
 Zimmermann, Dr. Rainer E.  
 Federal Supervisory Office for  
 Insurance and Free University Berlin  
 Berlin, West Germany

ABSTRACT

A recent approach to Psi in terms of Theoretical Physics as put forward in (Zimmermann 1979a,b,c) leads to the notion of splitting the universe in two disjoint components which correspond respectively to the real and imaginary parts of an eight-dimensional (four-dimensional complex) carrier space. Physics in these two components is re-interpreted as a projection of events from carrier space on the usual space-time manifold. A translation mechanism leads to characterizing the components separating physical space-time from the imaginary component. An Invariant Duffing oscillator is considered on the metric background and Psi-interactions are extracted. In this present paper we discuss especially the meaning of subconsciousness.

1. The splitting of space-time into two disjoint components leads to a metric characterization in terms of Lorentz metric components of the form

$$ds^2 = g_{ab} dx^a dx^b \quad \text{if} \quad v \leq c \quad \text{and}$$

$$dw^2 = h_{ab} dy^a dy^b \quad \text{if} \quad v \gg c .$$

The carrier space of these components arises in terms of



January 12, 1979

Professor John A. Wheeler  
Department of Physics  
University of Texas  
Austin, Texas 78712

Dear John:

Now that the smoke has cleared somewhat from our Houston panel discussion, I thought I'd write you, man to man, about an aspect of your presentation you may not have thought of.

Surprising though it may seem, the purpose of my writing you is not at all, I repeat not, aimed at persuading you to change your opinion or stance about our field one whit. Rather, it has to do with something as simple as the syntax of your remarks.

As I heard you present your position, the phrases 20,000 astrologers/2,000 astronomers, \$1 million-\$20 million a year, etc., had a familiar ring about them. It wasn't until I had an opportunity to read the appendices to your paper, however, that I realized you had apparently taken onto yourself wholecloth the rhetoric of the Randi/Gardner/Zetetic/Committee (so-called Committee for Scientific Investigation of Claims of the Paranormal). Since the antics of this group over the past two years have made them something of a high farce in the eyes of many scientists, I am persuaded to assume that you are unaware of their interesting history, so I wish to provide you this information.

In 1976, amid a flurry of press releases, the so-called "Committee for Scientific Investigation of Claims of the Paranormal" was formed as a subcommittee of the A.H.A. (American Humanist Association, a group registered as a religion in the state of California). At that time they began the journal Zetetic, edited by Committee co-chairman Marcello Truzzi, a sociologist at Eastern Michigan University. Other members on the Editorial Board were Committee co-chairman Paul Kurtz, Martin Gardner, James Randi, Philip Klass, Ray Hyman, and Dennis Rawlins. (Enclosure 1)

Since the stated purpose of the group was to take exception to the popular sensationalizing of paranormal claims, and to promote in its stead scientific investigation of those claims, many scientists

**SRI International**

333 Ravenswood Ave. • Menlo Park, CA 94025 • (415) 326-6200 • Cable: SRI INTL MNP • TWX: 910-373-1246

Professor John A. Wheeler

Page 2

January 12, 1979

(including myself) felt they had found a home for rational dialog on these issues. It wasn't long, however, before it became apparent that the stated purpose of the group was betrayed, and that the group and its journal were being used as a platform for slogans rather than science. This was perhaps best stated by the Committee's own co-chairman and Zetetic editor, Truzzi, when he resigned. (Enclosure 2).

When Truzzi's resignation began to focus attention on the issues involved, scientists began to realize that their names were being used to provide an aura of legitimacy for a pseudoscientific (as opposed to scientific) attack on paranormal claims. (Enclosure 3). As a result, most scientists of note have since resigned from and withdrawn their support for the committee. This disaffection even includes the likes of Perci Diaconis, who recently authored the article in Science critical of parapsychology research. (See his resignation letter--Enclosure 4.)

Although the Committee has tried to keep up its image by media blitz, including publication of its new slick journal The Skeptical Inquirer (which you recommended in your talk), the Committee's credibility has eroded far enough that even their parent organization (the A.H.A.) withdrew their support and financial backing. Kurtz (the Chairman of the Committee) was even removed from his A.H.A. post as Editor of The Humanist. Following its severance from the A.H.A., the Committee has reincorporated as a scientific (rather than religious) organization, so maybe that will reestablish some of its lost credibility. (Enclosure 5). We also understand that, having lost their broader A.H.A. platform, they are concentrating on persuading individuals of high personal stature to provide the platform they need.

My purpose in providing you with this information is not, as I stated in my opening remarks, aimed at dissuading you from the position you took at the A.A.A.S. If you find yourself skeptical of the experimental procedures or analysis techniques of the parapsychology field, or, more broadly, opposed in principle to the concept that claims of the paranormal should be subjected to rigorous scientific scrutiny under laboratory conditions, then I think it is appropriate that you pursue opposition to the field on the basis of your convictions. It is only that I shrink from the possibility that a fellow scientist, whose work I admire and respect, is pursuing such a course unknowingly encumbered by disinformation ploys of those who have something to gain from the backlash to increasing interest in the so-called paranormal. (Let's face it--it is not the scientist who gains from controversy and personal notoriety--it is the magician, the magazine editor, the writer; in short, the media-oriented person.)

---

\* Example: 200 people working in the field/\$2-200 million/year. Since the actual numbers have been established by survey and published in the Parapsychological Association newsletter as being much less than your minimum figures, such statements are clearly media-hype, and credibility-damaging to those who would quote them.

Professor John A. Wheeler

Page 3

January 12, 1979

By the way, I have no quarrel with much of the material in your appendices. In fact, I would argue that the history of fraud and charlatry you outline has resulted precisely because scientists like us have not been willing to take responsibility for investigating these phenomena. I would also argue that to the degree there has been scientific investigation of, e.g., ESP phenomena, showing it to be statistical rather than dramatic in character, to that degree the public is less gullible with regard to grandiose claims. Thus condemnation of scientific investigation of paranormal claims seems to me misplaced--a non sequitur.

With best regards,



H. E. Puthoff, Ph.D.  
Senior Research Engineer  
Radio Physics Laboratory

HEP:dlt

Enc.

INGO

I THINK IT'S  
EXCELLENT!

I SHOWED IT TO ED MAY-

HE THINKS IT'S

SPOT ON

ARC Hal



CONFIDENTIAL (IN HOUSE): This memo is to be considered confidential to our project. no additional copies shall be xeroxed, and its contents shall not be shared to other than the addressees. This memo exists in one original and three copies.

MEMO

TO: Puthoff, Targ, May

DATE: 18 December 1979

FROM: Swann

LOCATION:

SUBJECT: Positional overview as of date

CC:

As a result of recent difficulties, several things have come to light that I think should be commented upon, mostly so that we can have a common and understood overview of our project, and hopefully to avoid future conflicts of the nature we have just experienced.

1. PROJECTS BALANCE: Our group is involved with several commitments which, to my current understanding, break down as follows:

a. 8465 (AMSA/INSCOM) at 200k, one half of which was applied to RV, in which was included, and so far only activity, the Fort Ord experiment; and one half of which went to the orientation of INSCOM selected personnel.

b. 7560 (DIA) at 50k, mostly scheduled for crv.

c. 7430 (Dale/Perry) 160k, for rv in general, with Prry's special project confidential crv. 100k of this contract went for rv in general, while the remainder is applied to the confidential crv.

d. 8585 (MARADCOM) at 200k, for PK.

This schedule breaks down to 200k for PK, 200k for general rv, 100k for orientation of clients personnel, and 80k for crv,

as money is being expended on the different areas of effort.

2. ESTIMATION OF PRODUCTIVENESS OF THE DIFFERENT AREAS OF EFFORT:

These areas of effort might be judged according to the evidence so far marshalled on their behalf, and, in fact, all last analyses in terms of refunding and on-going contracts might very well hinge on this particular aspect. In this respect, those experiments where the clients themselves have had hands-on control of both the origin of the target and thenceforth the evaluation and feedback on its success probably would rank as most conclusive in the minds of judges. The second category of important evidence is that evidence discovered in-house, and judged by personnel selected by the in-house experimenters. While this second type of evidence is good and expert, the fact that the evidence and the conclusions based thereon originate in-house, and therefore might not be as trusted psychologically as outer hands-on type of evidence, this second category should, in my opinion, always be considered secondary.

A third type of estimation concerns those areas of activity where we have no evidence at all justifying the outcome of any effort, or where the evidence is hypothetical in nature, or merely hoped for.

If we apply this line up of estimative of productiveness, it seems clear that hands-on types of experiments, when they succeed, are our best confirmable type of product; totally in-house work, is second; theoretical or hypothetical work is not yet productive.

A chart of estimation of productiveness would therefore look something like this:

hands-on:	crv targets assigned us by external agents, and judged by them	80k
orientation:	orientation of clients personnel, being an in-house effort, but with selection of personnel by clients	100k
in-house	rv in several forms	200k
theoretical:	pk	200k

Based upon this estimation, therefore, it is clearly seen that crv hands-on types of work is consuming the least amount of funds, orientation types being intermediary, while in-house and theoretical work is consuming a little over 2/3 of our general budget. If these monies are not indeed being applied in this manner, this breakdown will nonetheless be reflected in reports.

3. EFFECTIVENESS IN THOSE COMMUNITIES THAT FUND US: Those communities that direct funds to us are, without doubt, interested in either tactical or strategic aspects of psi; if there is a scientific interest, this is admittedly secondary, and their interest in things that are "merely interesting" is very low. In this respect, crv, because of its nature of spanning the globe and being the easiest for the clients to have hands-on, has created, and continues to create, the most enduring and highest-placed interest.

4. INVITATION FOR COUNTER ARGUMENTS: If there is evidence that crv is not our most strategic capability, either in impact, influence or use-worthiness, I would like to receive written counter arguments to this effect, as, at this stage, I think it is only fair that our mutual opinions should be reflected actually.

5. THE DISPROPORTINATE BALANCE OF CRV vs. THE REST OF THE PROJECT:

Based upon what I consider the irrefutable fact that crv produces and maintains the unavoidable interest for our project at the highest levels, and is thus the fulcrum upon which most funds are pumped into our system, regardless of the various proposals that justify the funds, certain imbalances concerning crv should at this time be noted.

a. Crv utilizes the least amounts of funds.

b. Crv receives the least amounts of efforts to establish basic hypotheses for its existence, and in fact, no effort has been made even to produce analyses of the problems it creates vs the rest of science.

c. Crv, until just now, has utilized the least amount of available project space, equipment and back-up efforts.

A propos this, I have heard too many times that "since we can't explain it", a sort of inattentiveness has been applied to the general area of CRV. This has built up, or has had the effect of building up, a negative approach to becoming involved with the basic issues crv challenges us with, a non-confront in terms of willingnesses to become involved with crv at the several hypothetical, theoretical and practical levels crv suggests.

Since this disproportion concerning crv exists, crv and its meaning and importance to the existence of the project tends to come into artificial conflict and resistance, both psychologically and practically, within the inter-project personnel interactions here at our project in general.

d. Crv receives minimal mention in reports, and no agenda of success vs failure of individual crv events in the hands-on system has appeared to my knowledge.

6. THE ACTUAL STATUS OF CRV AS OF DATE:

a. Crv effort within the project originates with me, and is maintained within the project under a duress or force that I think is unfair both to its potential and its position and importance in the highest levels it influences.

b. As of date, we have three types of crv activity:

(1) Theoretical study and development by myself.

(2) Experimental testing and drills by Puthoff and myself.

(3) Hands-on "proof" evidence, received and judged separately from (2) above.

(4) Its trainability - to date, crv is the only and sole aspect of our overall project that has evidenced trainability with a conservative predictiveness of over 50% success ratio.

(5) Certain individual efforts have achieved recently a "perfect" rating overall, and on a scale of 1-10, an 8 and 9 in certain particular aspects.

7. CORRECTIONS TO THE OVERALL SITUATION: At the stage, crv produces the most important and undeniable overall highest placed interest in our project. Therefore crv must achieve within our project similar considerations and protections in our attentions and support. The in-house commitment to crv must come more into line actually within the overall balance of the project, and the time, effort, space and funds available to our project must come more into conformity with the yield for the project of crv. Due to its sensitiveness in experimental testing and training, crv has to achieve special attention and considerations to eliminate duress and force that surrounds it. Because of its yield, its success ratio and its apparently confirmed trainability, crv should no longer be considered on a par with other functions of the project, and a general overview within the project should be evolved to encompass and bring support to its overall importance. Project space, equipment, back-up efforts and funds more in proportion to its yield in the project overall must be set up and granted to the effort of developing it. Crv, and its personnel and trainees should not be subject at any time to conflict of interest of any kind. While it is apparently best at this time that crv should be compartmentalized within the project as concerns (1), (2) and (4) of paragraph 6, the effort to begin to support it theoretically, space-wise, funding and back-up support should be shared proportionately by all.

8. CONCLUSION: If the above is not seriously considered and implemented, this project is going to end up with a stunning capability potential with a deplorable vacuum of support efforts behind it. This latter will not escape the notice eventually of the hands-on type of interested parties, and they will ultimately recommend and begin to press for a separation of this effort to their own auspices at other sites, where they will bring to crv all that is lacking here within our own project. That trend has already started with INSCOM, and the implications cannot be here avoided.