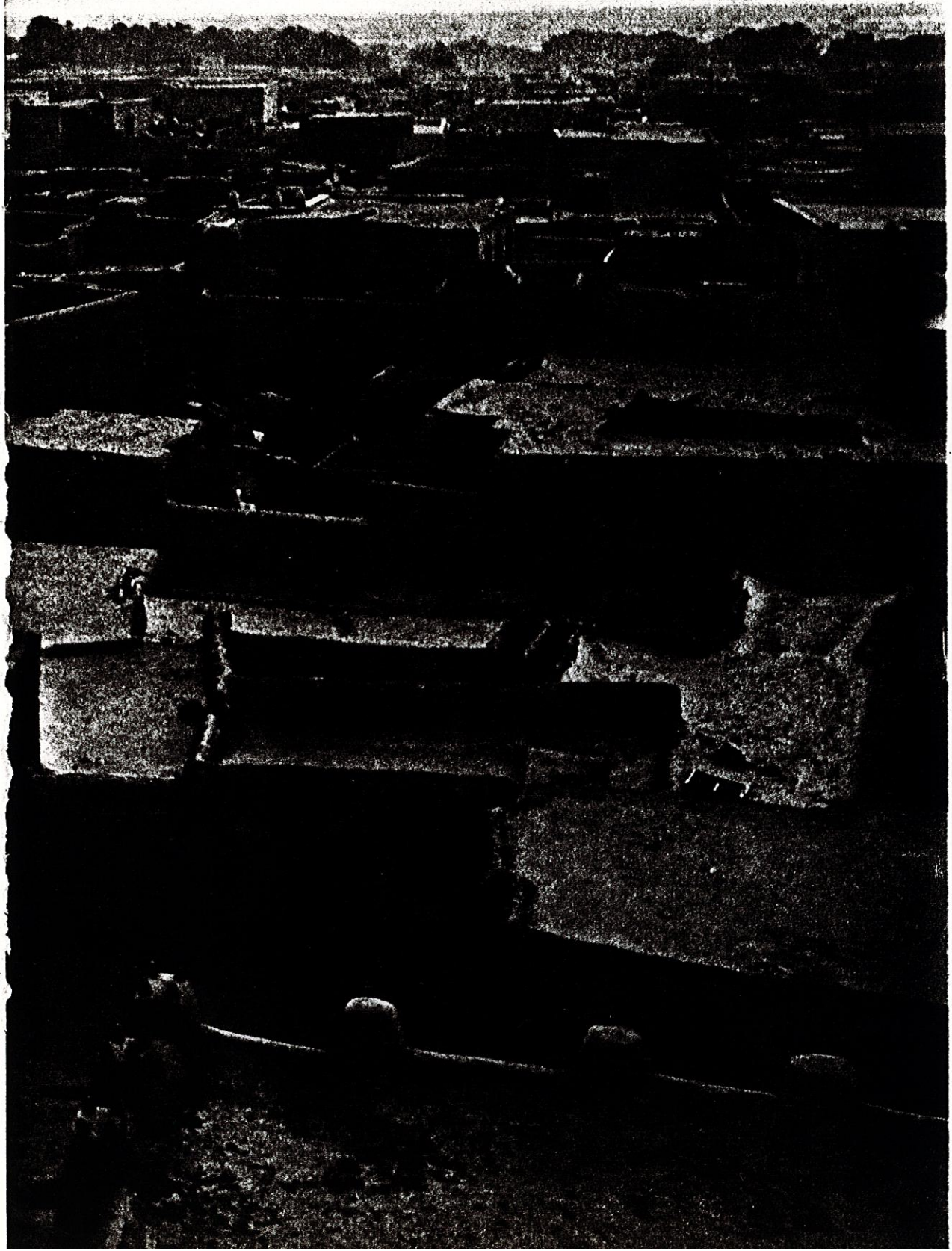




1054 00

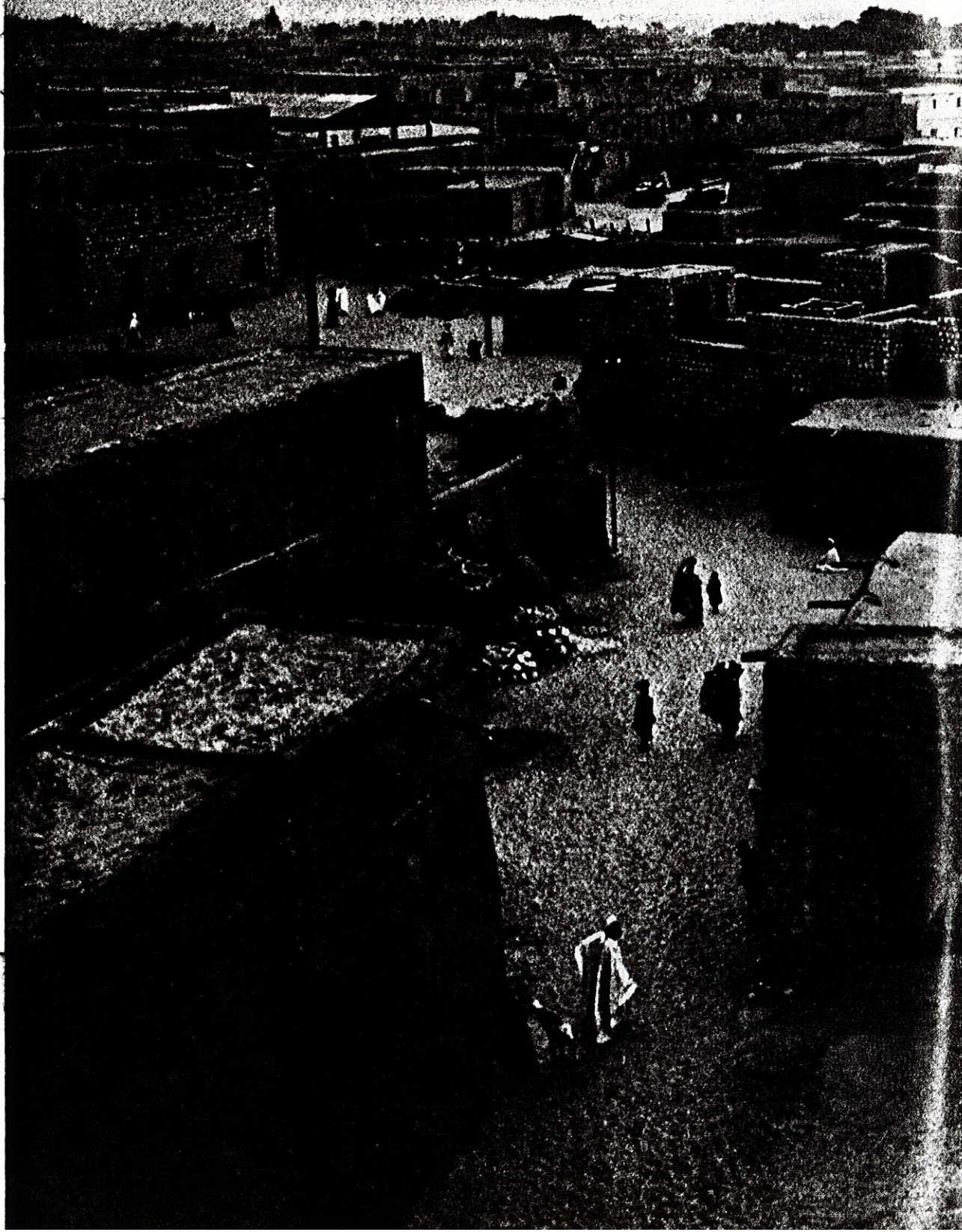




1054 00

SUNSET SOFTENS THE DUSTY SQUALOR of "Timbuktu the Golden," Mali's fabled crossroads, which for centuries symbolized end-of-earth remoteness. Today only a trickle of tourists and salt caravaneers reaches the south-Saharan village.

EKTACHROME BY JAMES P. BLAIR © N.G.S.





1054 00

24 Jun 80.

9.01

5° 19" N

4° 1' W

(4)

Har lay

Harl mon da nga

Nd nanga.

Dno PRO vince.

D, ron mon ganc.

End.



1054 00

24 Jan 80

9.01

(3)

5° 19' N

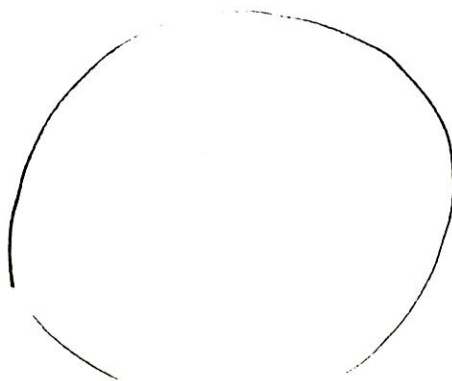
40 1' W

Bo kon rada

town has. English name.

Sin clain ville.

rocky outcroppings -



town -  
circular,

Bo Kon

Kan Bo.



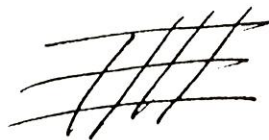
1054 00

24 Jan 80

9.01

(2)

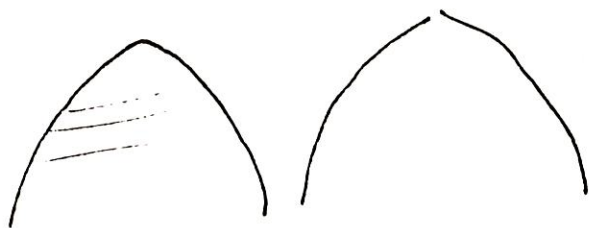
5° 19' N  
4° 1' W



buildings -  
Modern.

white —

5° 19" N  
4° 1' W



mud huts —

broad streets —



like Kilimanjaro and.



1054 00

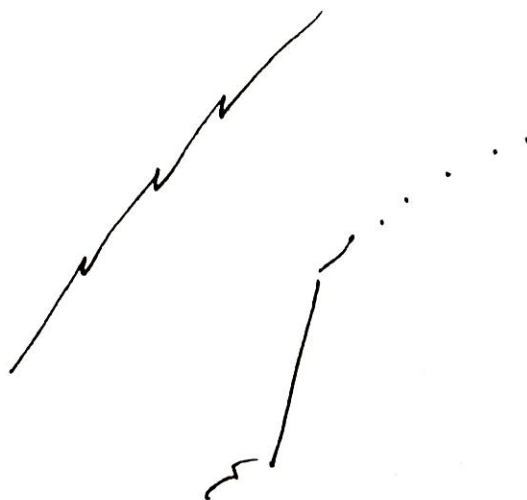
24 Jan 80  
Fugo Swain

9.01

(EARTHQUAKE @  
1100)

$5^{\circ} 19'' N$   
 $40^{\circ} 1' W$

$5^{\circ} 19'' N$   
 $40^{\circ} 1' W$



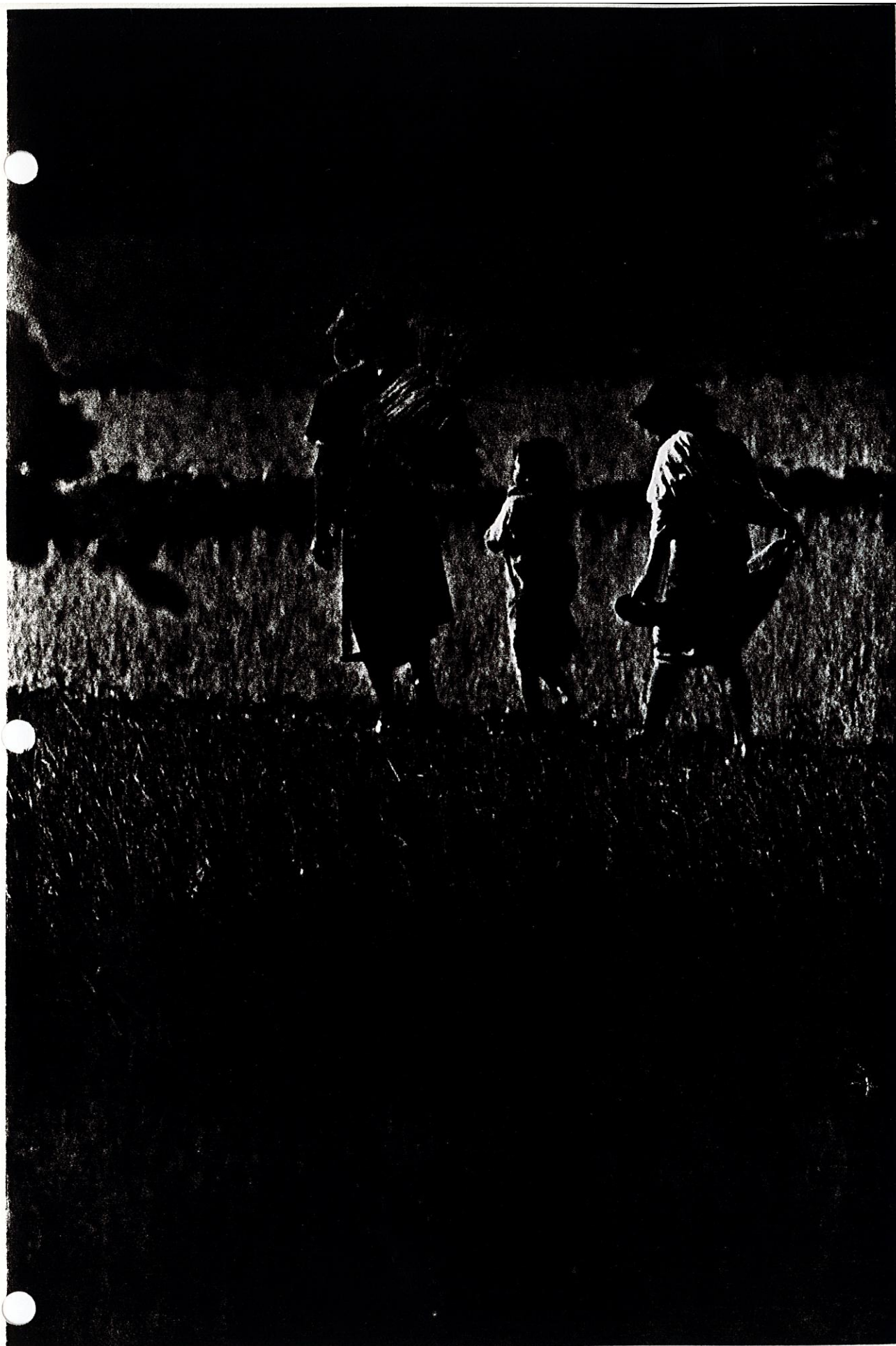
cliffs —

—  
broad plane —  
(river)

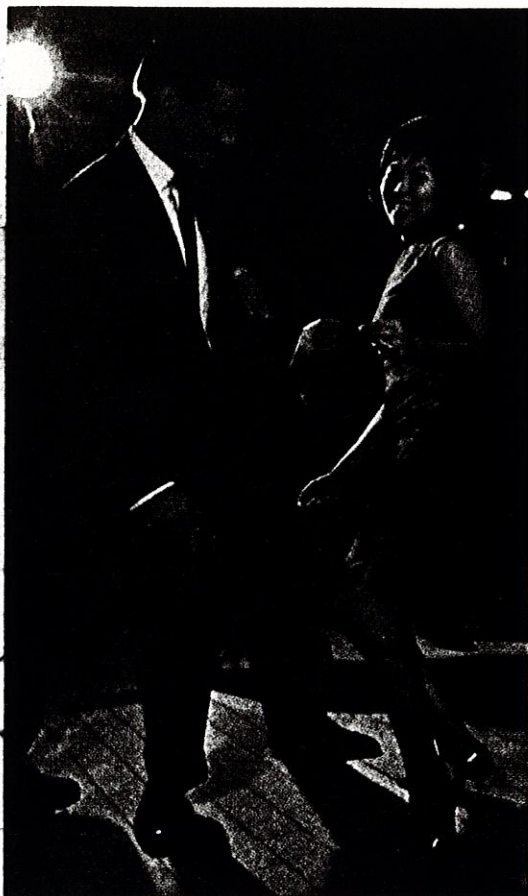
lake.











European and Chinese partners delight in the twist, an American dance, at a private party in a Singapore home.

### **Singapore's Teeming Maze Lies at an Asian Crossroads**

"If no untimely fate awaits it, [Singapore] promises to become the emporium and the pride of the East," wrote Sir Stamford Raffles after he leased the nearly uninhabited island in 1819.

The city's British founder proved prophetic. Situated at the tip of the Asian mainland, Singapore was hard for ships to avoid, and few did. Soon it drew a host of Malays, Chinese, Indians, Javanese, Ceylonese, Eurasians, and Europeans. City and free port grew rich on trade.

Here, like so many waterbugs, hundreds of sampans cluster in Singapore River as ocean-going freighters anchor in the harbor's inner and outer roads.

Banks, shipping firms, insurance offices, and department stores ring Raffles Place, a one-time swamp at upper center. Clock tower at left tops Victoria Memorial Hall and Theatre.

Skirts lifted, an elderly Indian dashes across a rain-slick Singapore street



HS EKTACHROMES AND KODACHROME (RIGHT) © N.G.S.





1053 00





22 Jan 80

9.35

1053 00

(4)

$1^{\circ} 20' N$   
 $103^{\circ} 50' E$



several groupings of Bldgs.



tall tower -

||||| city ÷  
white Bldgs -

Bombay aal..

Boz namoroth -

End -  
difficult.

SINGAPORE  
PL 15 H3  
ME 11/12



1053 00 22 Jan 80

9.35 (3)

1° 20' N  
103° 50' E

Populated —  
agricultural —  
farms —

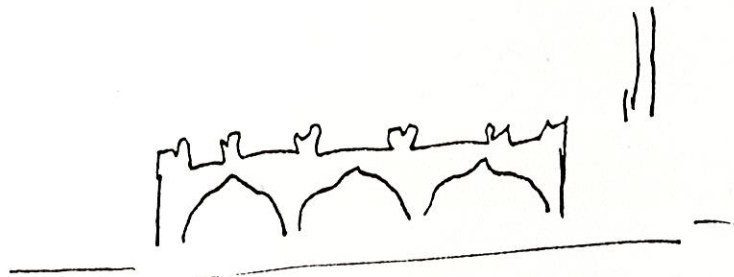
water —

series of villages —

1° 20' N  
103° 50' E

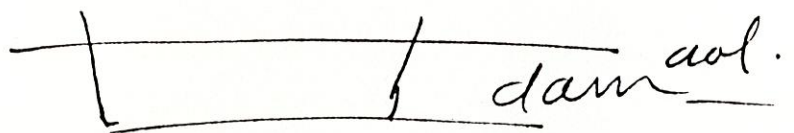
Moslem/India?

Buildings —



Break.

1° 20' N  
103° 50' E



1° 20' N  
103° 50' E



1053 00 22 Jan 80  
9.35

(2)

1° 20' N  
103° 50' E

water/shoreline —

reefs — near...

Break —

like a pagoda?

1° 20' N  
103° 50' E

Buildings —  
like a pagoda —

river?

tidal basin?

water —





Physically unpleasant.

1053 00

22 Jan 80  
Jugo Swann

9.35.

1° 20' N

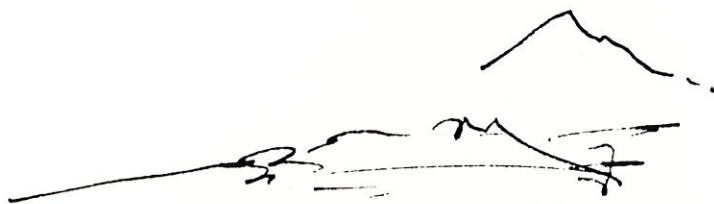
103° 50' E

1° 20' N

103° 50' E

1° 20' N

103° 50' E



water / breakings

islands

archipelago?

mtn in background.

green trees —

1° 20' N

103° 50' E

water on coast line?





Chairman of the House Armed Services Committee, and of Mount Tyree, named for Rear Adm. David M. Tyree, Commander of U. S. Navy Forces in Antarctica in 1959-62 (page 851). A major objective was to sample ancient rock strata and to look for fossils high in the central mountain area.

### Eggs and Explorers Head for "the Ice"

In Christchurch, New Zealand, on December 6, 1966, we climbed aboard a Navy-manned C-130 Hercules for the 8½-hour flight to "the Ice," as old hands call Antarctica.

Our party was honored by the company of Rear Adm. Fred E. Bakutis, then Commander of Operation Deep Freeze. Supplies bound for the main U. S. base at McMurdo Sound included crates of fresh eggs stacked high over my head. I hoped the landing would not make me one ingredient in a giant omelet.

As we flew over Cape Adare, the admiral pointed out the window, and I stood to peer down at ships grinding southward through the pack ice—the annual supply fleet, led by the Coast Guard icebreaker *Glacier*.

Soon we were descending to McMurdo, and I returned to my seat under the egg crates. Not a shell cracked as we landed.

At McMurdo, Jerry Huffman, USARP representative, helped us round out our gear, adding two Nansen sleds and a Polaris motor toboggan, fondly dubbed "lawnmower with skis" (pages 851 and 860). We also picked up radios, generators, and antennas.

At 5 p.m. on December 7th, our ski-equipped C-130 lumbered into the air with



Frigid blasts abate as Barry Corbet leaves his shelter at Vinson Camp I to inspect damage from a two-day storm. Winds as high as 80 miles an hour savagely buffeted the tents. A hastily grabbed shovel shored up a bending tent pole during the height of the blizzard.

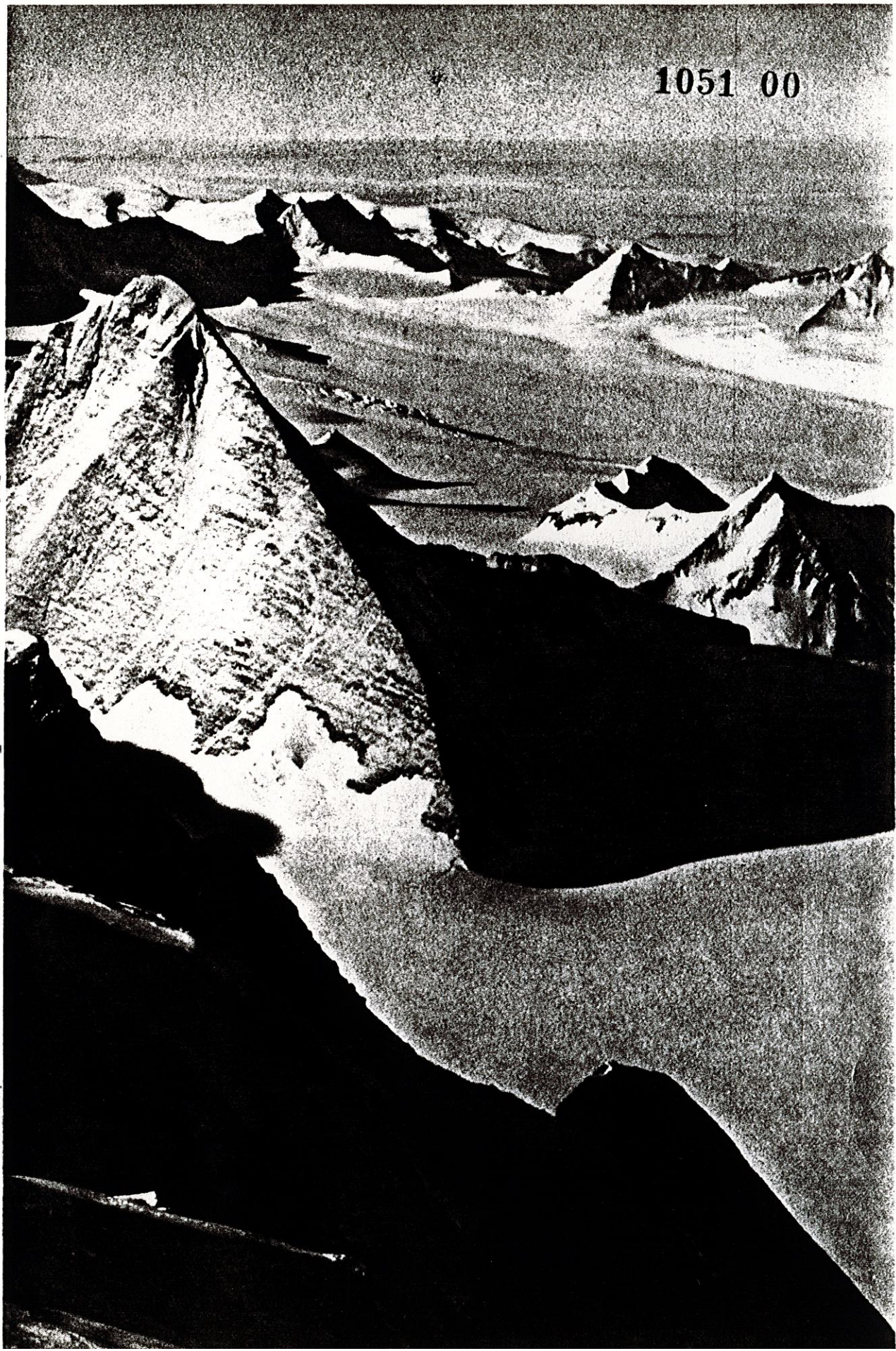
Less fortunate, men at Base Camp (right) had to struggle out of shelters that collapsed during the storm. Equipment blew as far as two miles down the glacier. Even as they began picking up the pieces, Dick Wahlstrom, left, started digging a snow cave for emergency shelter in future blows.

Wind is the demon of Antarctica. Like the Sahara, the continent has scant precipitation, averaging less than six inches annually. But constant cold preserves the snow for years, and the explosive wind drives it like the sand of desert dunes.





1051 00





1051 00 22 Jan 80  
8.54 (3)

Fjord -  
Hornwegian.

Mt Ambrose -

St. \_\_\_\_\_

Jean-Marie -

Ab on

ton -

End -

~~Vincent~~ +

Vinson Massif -

Sentinal range ..

CLASS C  
VINSON MASSIF MT.  
ANTARCTICA

25° 02' S  
22° 00' W

NOV 6/11 8/04 9/

1051 00

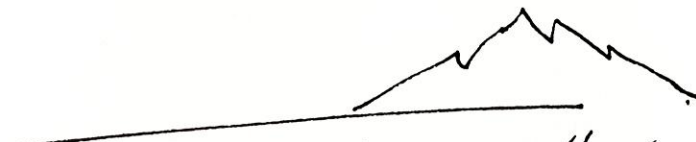
22 Jan 80

8.54

(2)

78° 2'S

22° 1'W

  
Broad Plains/w  
Mountains. // // //  
cliffs.  
Exposed rocky  
terrains -

78° 2'S

22° 1'W

Cracks in ice -

ice flow.

glacier -

÷ lake or some water ÷

stratifications

mtu ranges -

$\Sigma p \quad 0x$

$\Delta p \quad ex.$



physically a little movement

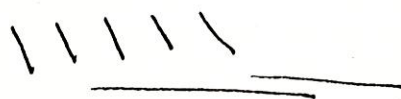
22 Jan 80  
1051 00 Jugo Swan  
8.54

78° 2' S

22° 1' W

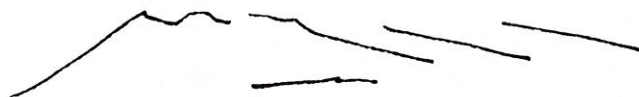
78° 2' S

22° 1' W



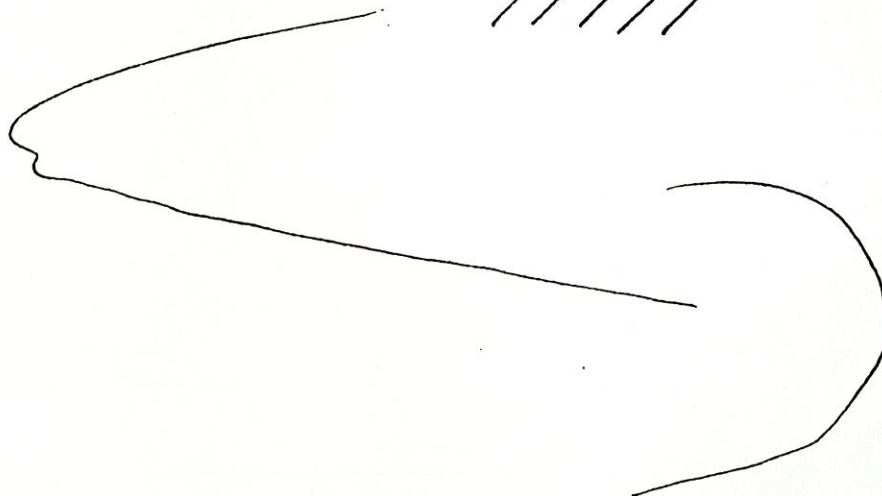
78° 2' S

22° 1' W



78° 2' S

22° 1' W





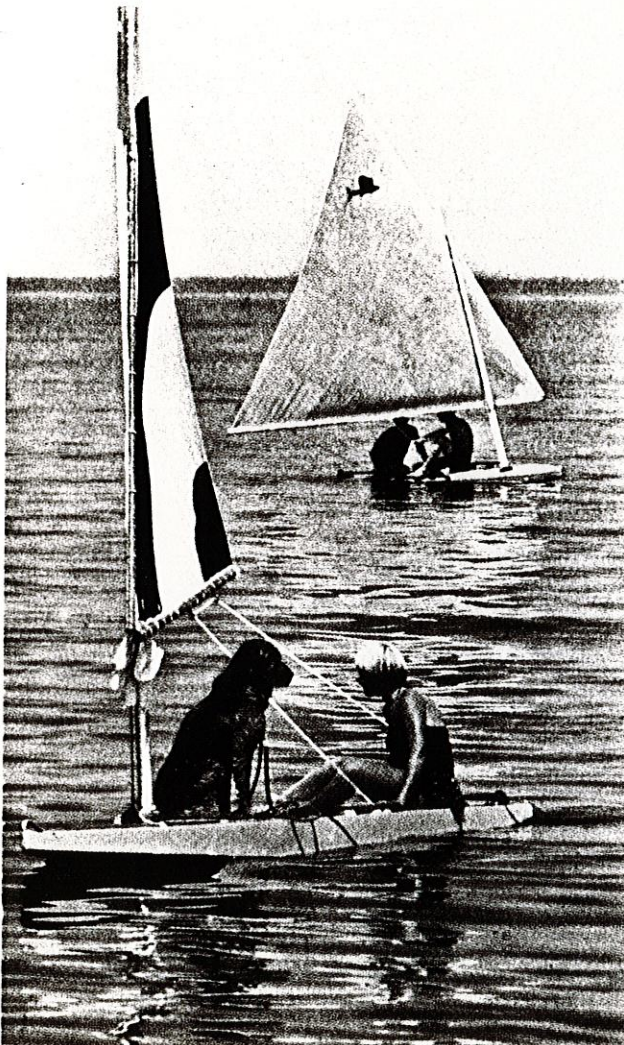


### Sun, Sand, and Sea Spell Summer for Bathers on a Vineyard Beach

Discovered in 1602 by an English navigator, the Atlantic-washed island was missionary colony, sheep-raising center, and whaling settlement before winning fame as a vacation resort. Summer visitors swell the population to seven times its winter size and provide the island's main source of income. Vineyard residents, convinced providence has favored their home above all others, tend to look down on all things "off-island."

Boats, umbrellas, and beach chairs announce open season at Oak Bluffs.

Shaggy crew member and youthful skipper, in their surfboardlike Sailfish, sit out a calm off Edgartown. Superb training craft for young mariners, the unsinkable Sailfish readily capsizes but rights easily. Edgartown's fleet numbers about 30.



a doorway, a hunting dog flushes a covey of birds; there a whale spouts an endless geyser. A knight on a charger thunders into battle, a saint spreads his arms in peace. Fleurs-de-lis and sunbursts, like the paper lace in a bakery shop, fill every corner. The results are tinsel-and-frosting houses right out of the Grimms or Hans Christian Andersen (pages 784-5).

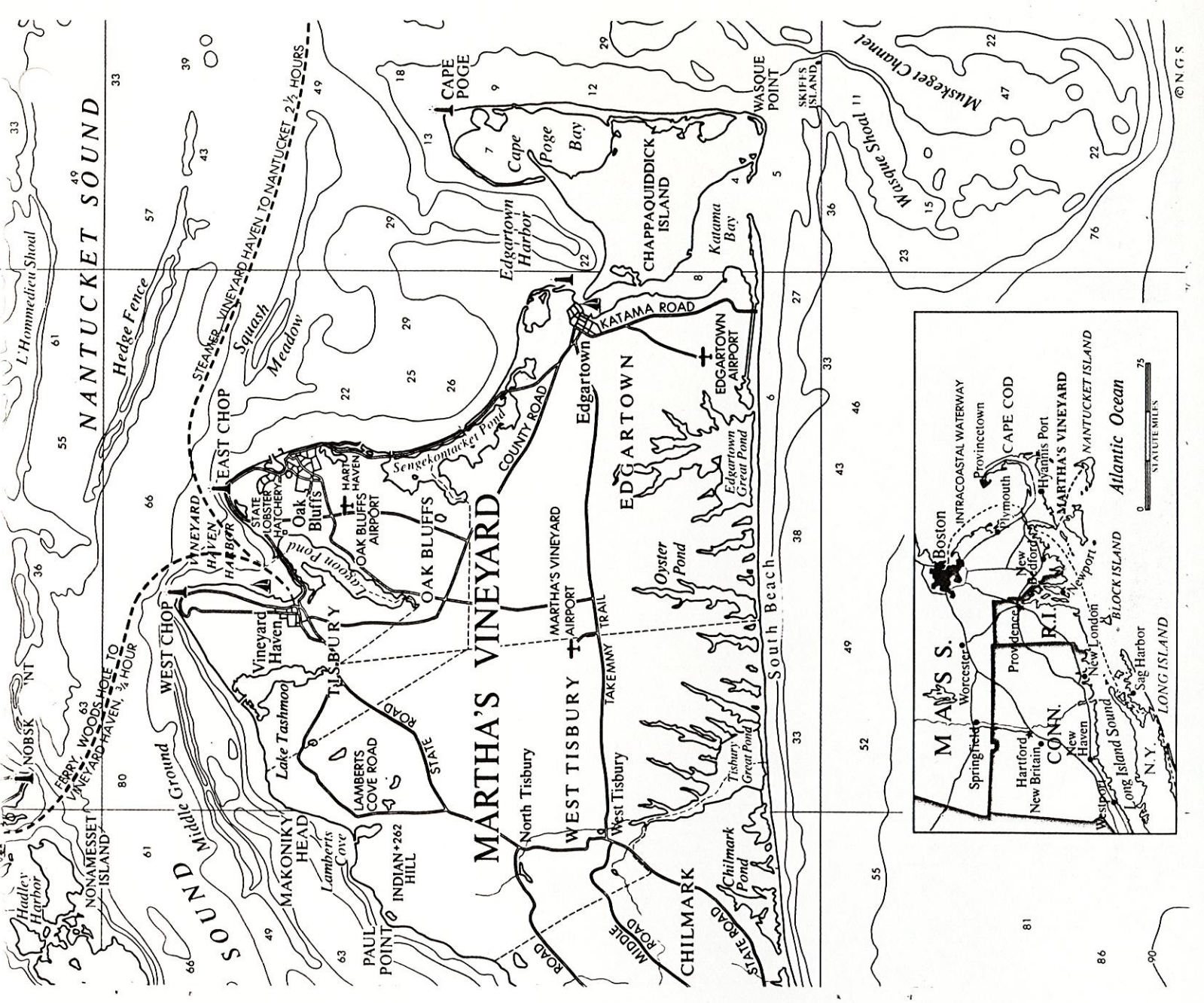
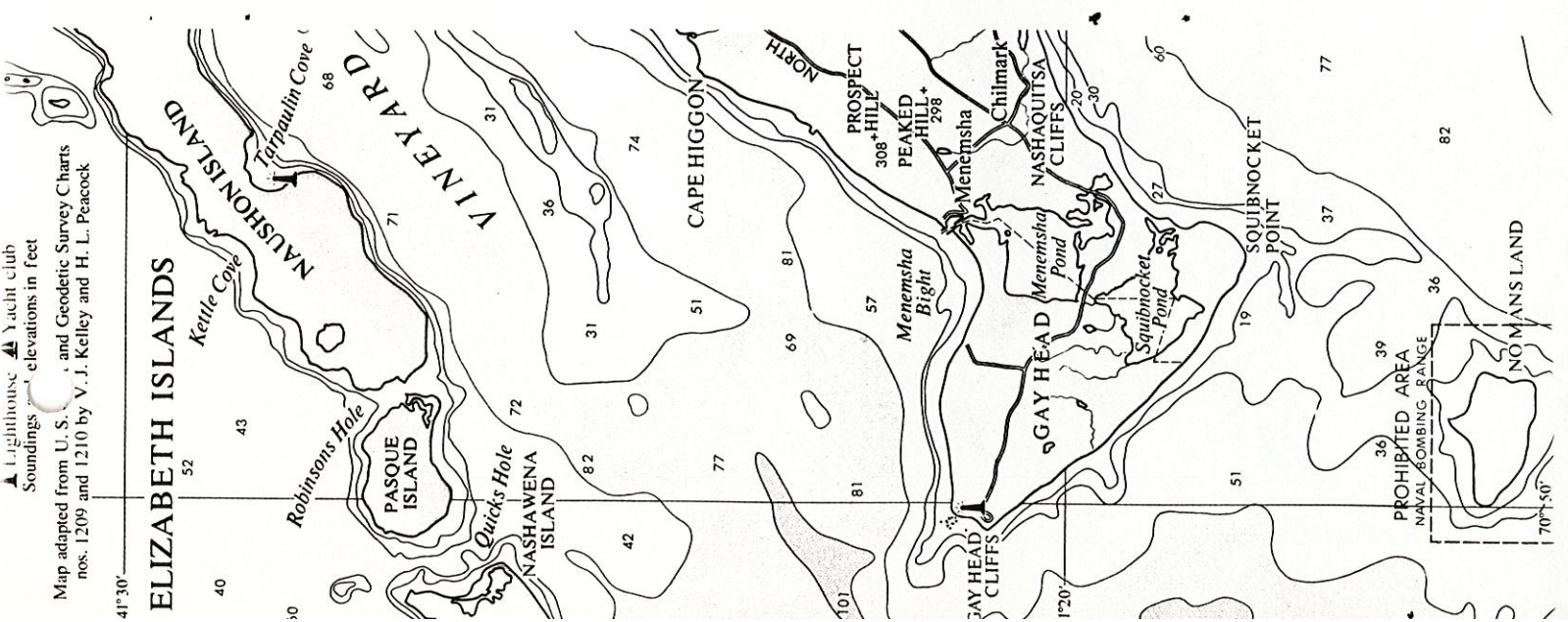
Oak Bluffs is famous for this pageantry in wood, a Victorian architectural craze that some think charming, others a nightmare, but in any case a sight that everyone comes to see at least once.

"We call it 'American Carpenter's Renaissance,'" Henry Beetle Hough, editor of the highly respected *Vineyard Gazette* and a student of the carvings, told me with a smile. "Others label it the Jigsaw Era.

"The sad thing is, it's a dying art. No one has the time and skill to repair this priceless work. It's a thing of the past."

The past, in fact, seldom bothers Oak Bluffs. Begun in 1835 as a Methodist camp meeting,







**A** FIFTH-GRADE PUPIL on Martha's Vineyard Island once wrote an essay on Julius Caesar.

Summing up his disapproval of the Roman dictator, the author began: "In the first place, Julius Caesar was an off-islander."

I don't know if the story is true. I have only been visiting Martha's Vineyard for 25 years, so you see I'm an off-islander myself.

How, then, do you become an islander—or, to use the proper term, a Vineyarder? First of all, you must be born on 109 square miles of moor and dunes lying off the Massachu-

setts coast. Immigrating is not enough; you must be born there. It would help if you became a fisherman, a carpenter, or a boat-builder; but a lighthouse keeper, a stonemason, or a wharfinger would do very well. So would a schoolteacher, an oceanographer, an editor, or a doctor with a talent for separating fishhooks from fingers.

To qualify further as a Vineyarder, you must know when the beach plums that border the back lanes are ripe for making jam. You must know when a no'theaster—not a casual storm, but a three-day no'theaster—is

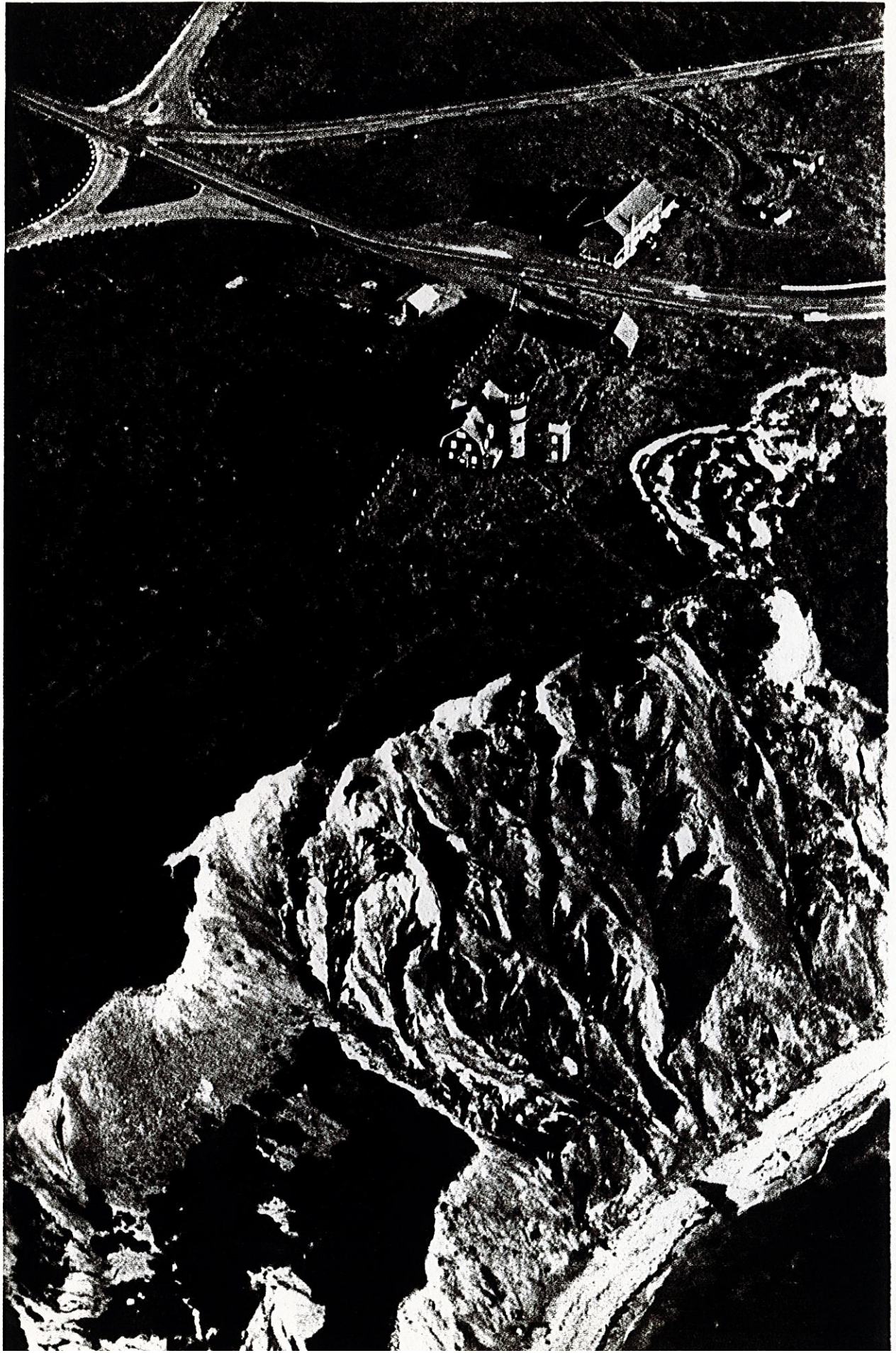
779

of Gay Head on Martha's Vineyard Island. Swordfishing boat (opposite) calls it a day

KODACHROME (BELOW) AND HS EKTACHROME © NATIONAL GEOGRAPHIC SOCIETY

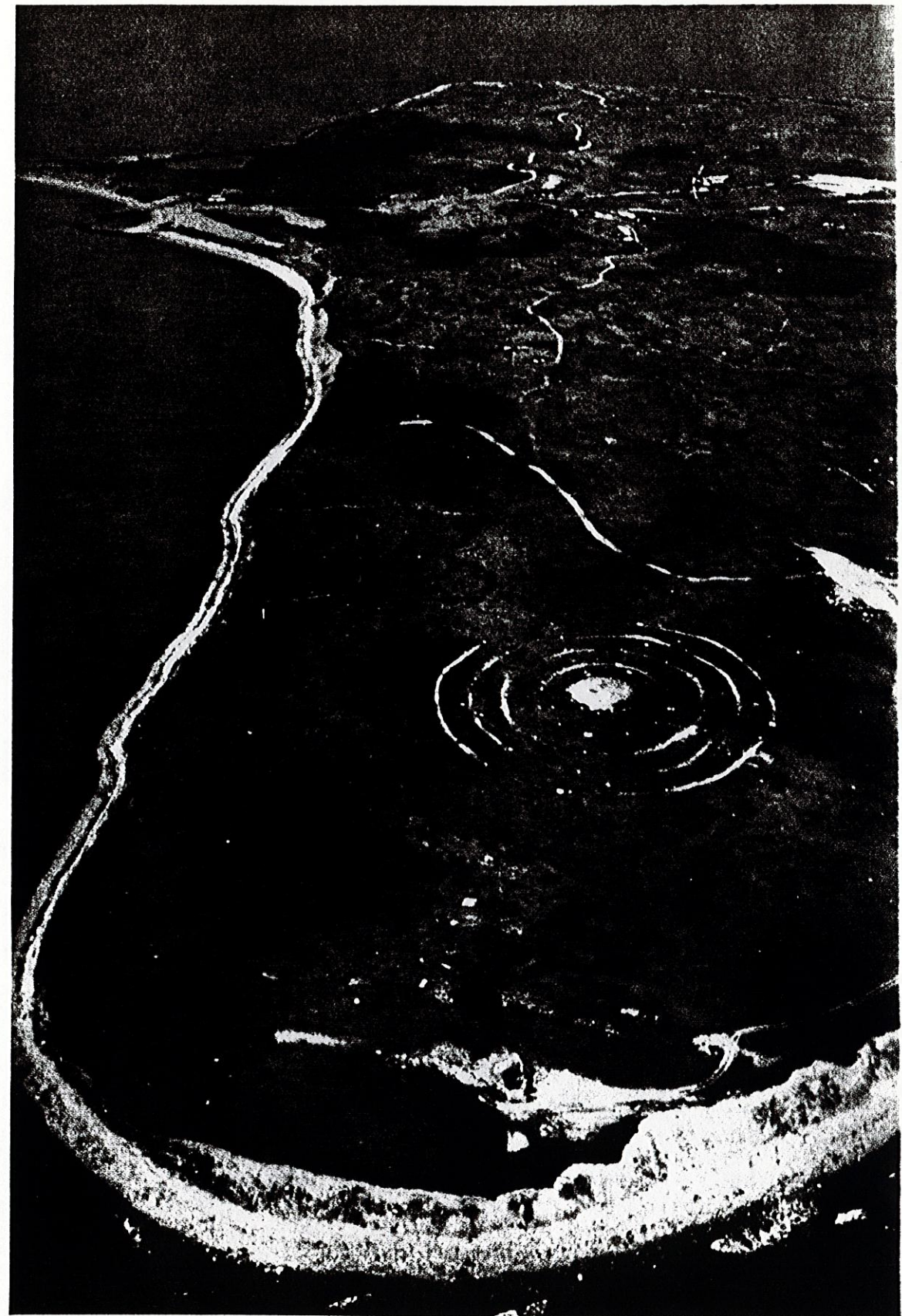








1052 00



HS EKTACHROME BY JAMES P. BLAIR © NATIONAL GEOGRAPHIC SOCIETY

**Peaceful bull's-eye challenges flyers** at the U. S. Navy's aerial bombing range on No Mans Land, an island south of Gay Head. Carrier pilots from as far south as Virginia use the range to sharpen skills in dive-bombing, strafing, and toss-bombing, a method of lofting the bomb as the plane climbs, giving the pilot time to escape the blast.





1052 00  
**Martha's  
Vineyard**

By WILLIAM P. E. GRAVES  
National Geographic Staff

*Photographs by JAMES P. BLAIR*

Sunset kindles the gaudy ramparts





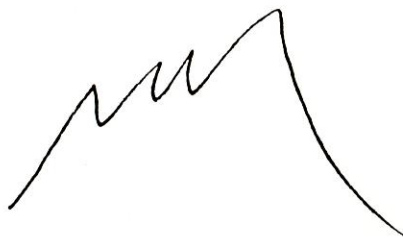
Physically? Not too well.  
Sleep.

1052 00 22 Jan 80  
Jugo Swann  
8.36

41° 16' N. —

1052 00

41° 16' N  
70° 49' W



mountains —

41° 16' N  
70° 49' W



river

plains —

— Abort —





1050 00

# Favorite Old Haunt of Famous Authors, the Cheshire Cheese Lives On

"There is nothing which has yet been contrived by man," said Dr. Samuel Johnson, the 18th-century lexicographer, "by which so much happiness is produced as by a good tavern or inn." Perhaps he had in mind Ye Olde Cheshire Cheese, a pub off Fleet Street. Johnson, who lived near by, may have dined there often, though biographer Boswell fails to record a visit. Charles Dickens was a frequent patron; the management preserves several checks he cashed. These diners await thick slices of roast beef. A portrait of Johnson hangs on the wall above his "favorite seat."

755

KODACHROME BY W. D. VAUGHN © N.G.S.



the next cen-  
 -ving to near-  
 -official bless-  
 -n representa-  
 -to London's  
 -ord Mayor's  
 -the City to  
 -the Strand,  
 -new execu-

the present  
 e "Meet the  
 st November  
 te: The City  
 the pageant.  
 gallery atop  
 ands blared,  
 by in sodden  
 ings, six feet  
 spiritedly from

umbled past.  
 were formed  
 and insig-  
 -ity. Atop it,  
 tannia, a 22-  
 Other floats  
 Dreadnought,  
 e, and H.M.S.

riding in a  
 horses. Fresh  
 ashly applied  
 e a tropical  
 overed about  
 nd a king as  
 justice to be-  
 -lord Mayor.

e City

aded by the  
 ll. Business-  
 -they bar po-  
 -s unknown.  
 ho must be  
 oasts its own  
 and engineer-  
 s four spans  
 -oric London  
 areas outside

win exceed  
 of this money  
 -don County  
 een," by H. V.  
 mber, 1953.











1050-00



lling through.'

ne of Thread-  
install a new  
tanley Baring,  
le will be the  
boss in nearly  
ary traditions  
members of the  
chant bankers

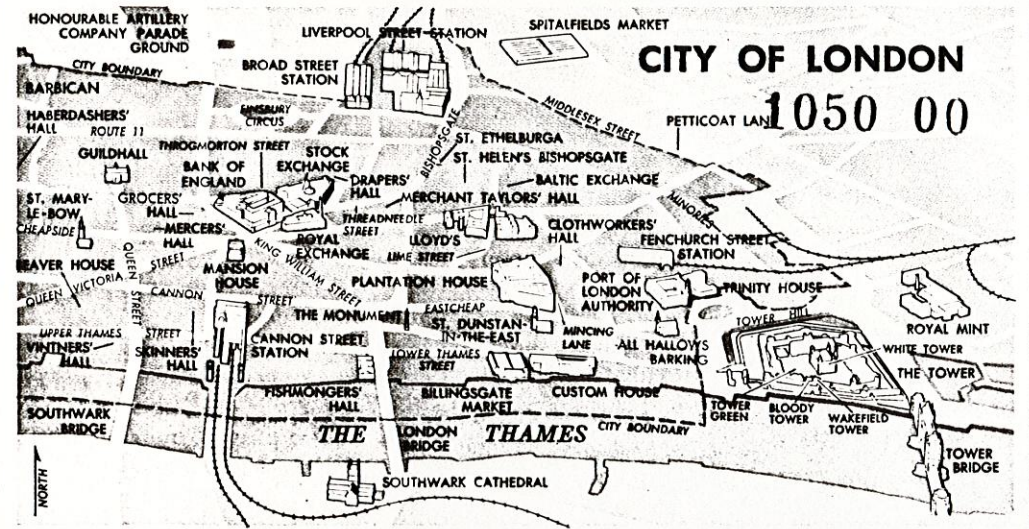
ing World

Lord Cromer  
e British Em-  
and his coun-  
e International  
departure for  
erview—a mi-  
and precedent.  
are to tradition  
an ossified at-  
Br ' doesn't  
The merchant  
ondon a great  
and they have  
es to changing  
re traditional  
of the City is

st story a win-  
land (opposite)  
the Tower of  
I saw genera-  
ricity to a city  
ew water from  
say the Bank  
three months.  
n, the bullion  
ong stacks of  
(\$56,000,000).  
South Africa  
my guide dis-  
which will be

f the Old Lady  
of the Stock  
oor, brave two  
s' gallery, and  
y Britain's  
th stock Ex-

ook down upon  
us room some  
er in chattering  
ad purpose be-





1050 00 17 Jan 80  
9.46 (2)

51° 30' N  
0° 10' W



Scatt.ish

Aber don da - ~~the~~

Devon on           

shire -



LONDON  
NG 6/61  
PL 56



1050 00

17 Jan 80  
Fugo Swamp

9.46

51° 30' N

0° 10' W



51° 30' N

0° 10' W

very beautiful.

buildings made of stone.

51° 30' N

0° 10' W

lot of Buildings.

— Medieval — ...

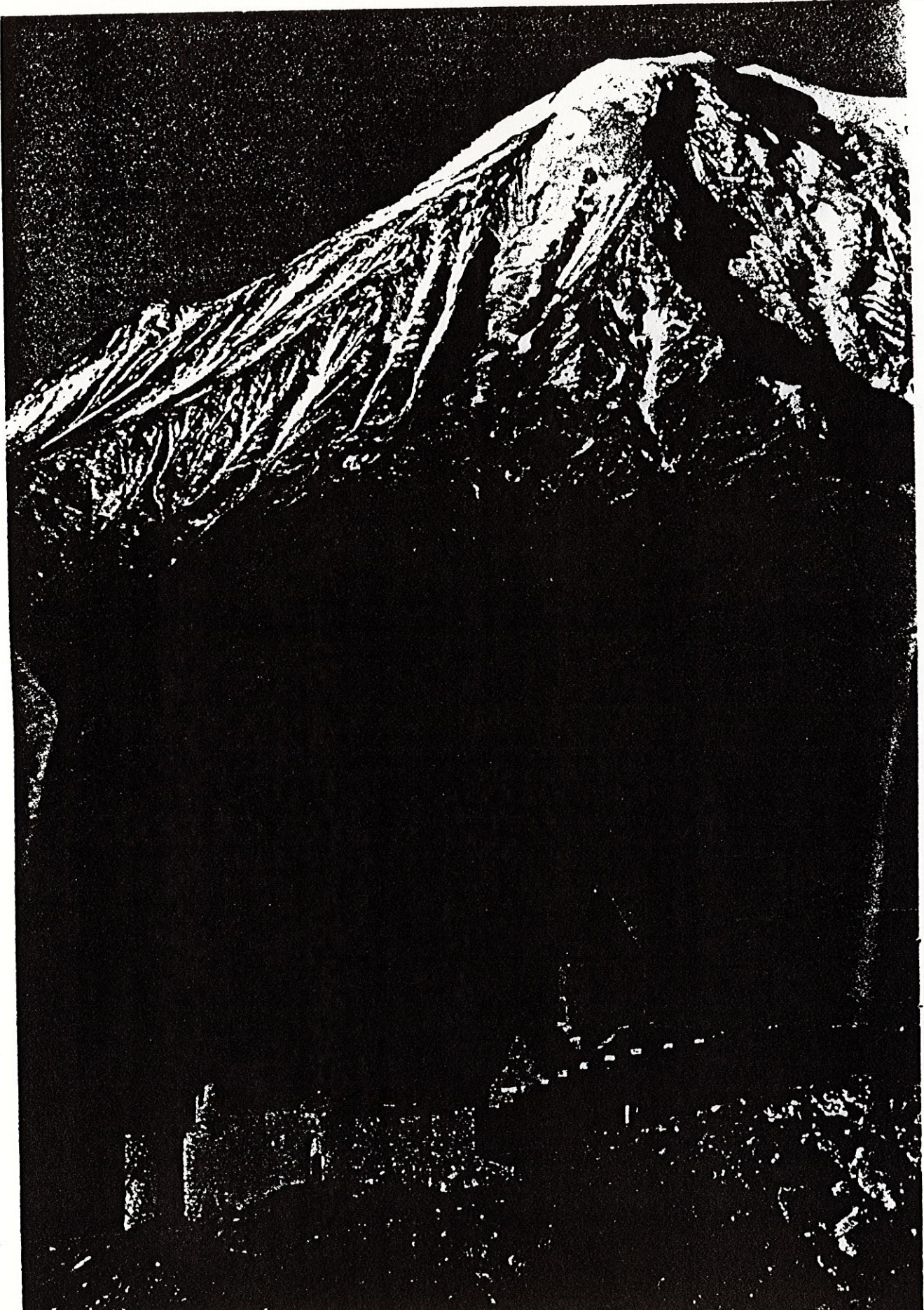








1049 00





1000 00

14 June 50

11. 17.

(3)

desert --

religious things - 'c

Anarcat. . .



1000 00

swam  
14 Jan 80

11.17

(2)

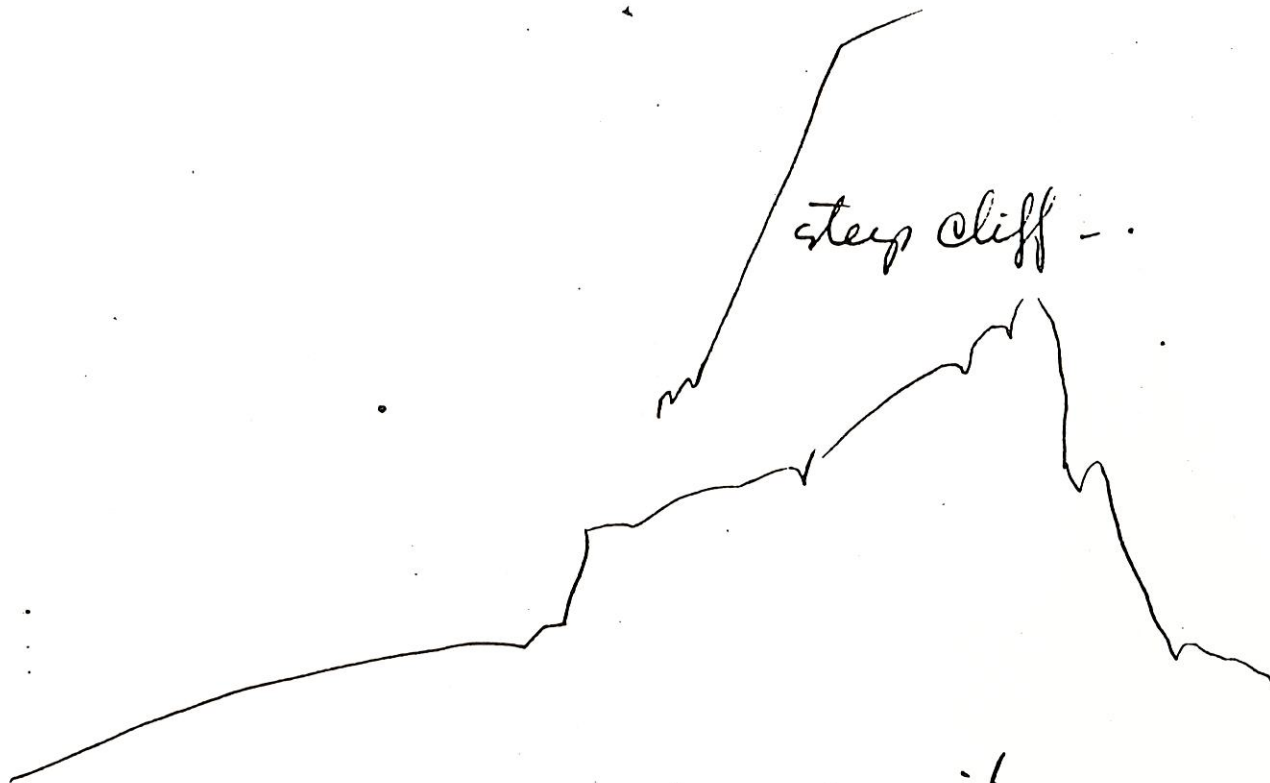
mtm target.

small cluster of Bldings.  
almost hangs:  
on to it. -

39° 44' N  
44° 15' E

black -  
dark rock -

steep cliff -



tunnel in it..



10-19 00

14 Jan 80  
Hugo Swann

11.17

39° 44' N  
44° 15' E

N' | N' | m. c.

39° 44' N  
44° 15' E

39° 44' N  
44° 15' E

Buildings —

2 shapes

N' | N' | m. c.

small group of buildings:

Natural formations:

meter range? C T







Swann

1049-00 ARARAT

14 Jan 80 (M)

1050-00 LONDON

17 Jan 80 (M)

1052-00 Martha's Vineyard

22 Jan 80 (M)

1051-00 Antarctica

22 Jan 80 (M)

105400 S-Saharan Village

24 Jan 80 (M)

105520 - ECUADOR

24 Jan 80 (M)

1056-00 Venezuela

25 Jan 80 (M)

1030-01 Hong Kong

25 Jan 80 (M)