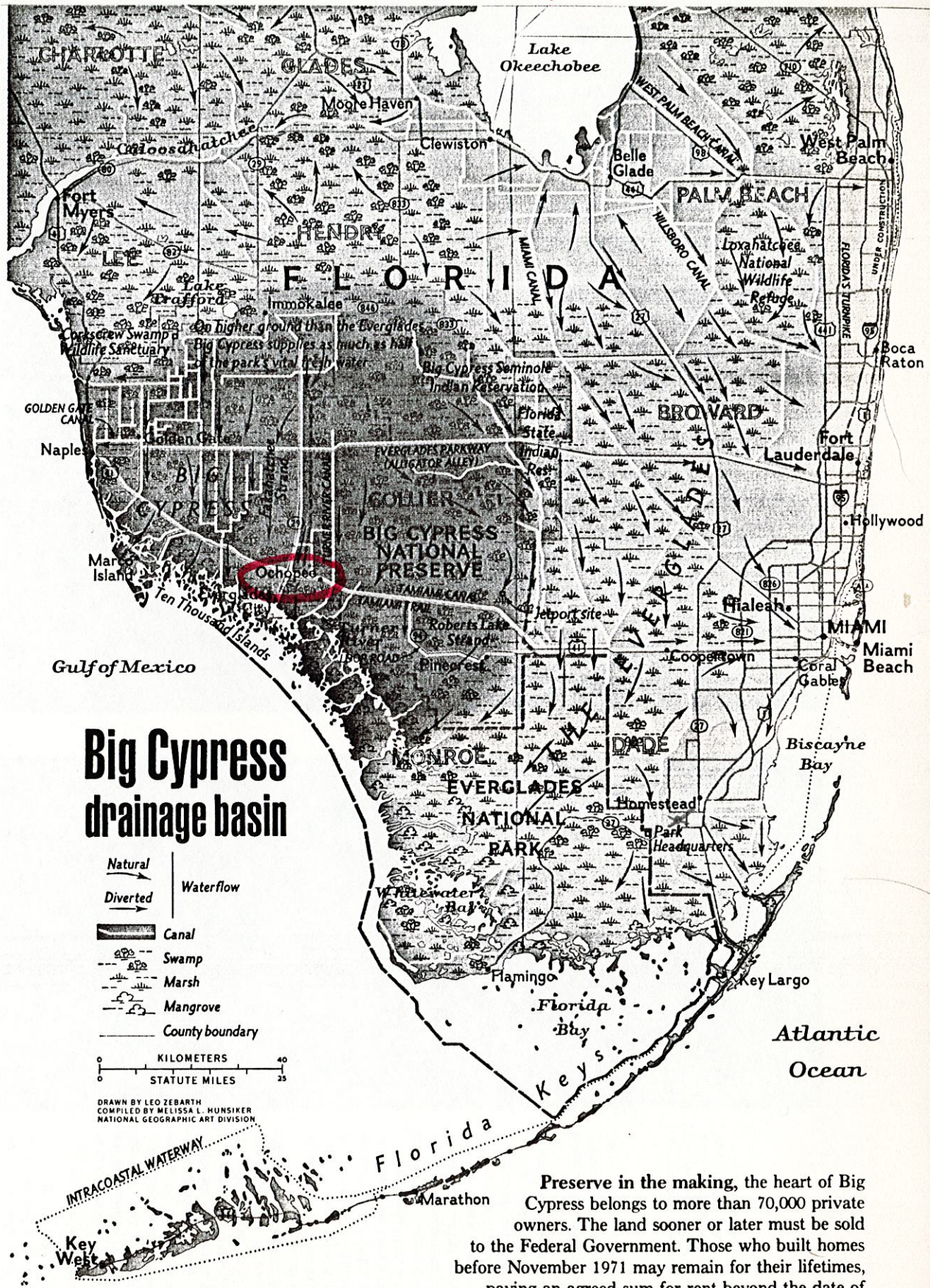


SOME



What is this newly proclaimed piece of the public domain? A casual motorist driving the Tamiami Trail might call it simply a tropical badlands. But to appreciate the Big Cypress Swamp, you must leave your car and wade waist-deep through one of its cool, pristine sloughs. Or stand in the cathedral-like hush of a dome of cypress trees and gaze up at the hanging moss, the hundreds of vines, the orchids and other air plants that fill the trees.

Crawling through the endless maze of Big Cypress, I could understand how in the mid-19th century the guerrilla warriors of the Seminole and Miccosukee tribes so easily eluded the pursuing U. S. Army here.

Imperiled Creatures Find a Haven

The Indians live on reservations now, or in scattered settlements along the fringes of Big Cypress and by the Tamiami Trail. The vast swamp remains a sanctuary for wildlife. It is a last stronghold for more than 20 rare or endangered birds and animals, including the wood stork, the Florida panther, the Everglades mink, the mangrove fox squirrel.

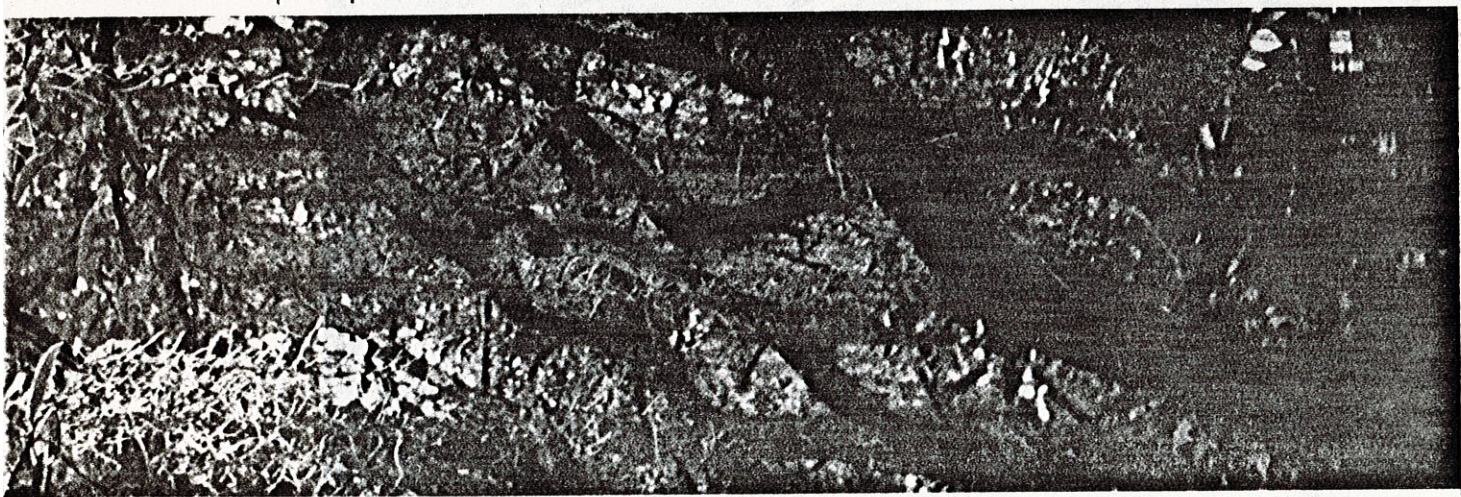
The Big Cypress is by no means all swamp. "Out here, just an inch or so of elevation makes for a completely different type of vegetation," Fred Dayhoff explained.

That is why one can walk out of a boggy cypress forest onto a big-sky prairie of tall grasses. Dotted the horizon might be islands of pine and cabbage palm. Throughout cypress country are hardwood hammocks of oak, bay, gumbo-limbo, and mahogany.

To the south the land drops gently toward the Gulf, and estuaries turn the soil salty. Here impenetrable mangroves replace the cypress and hardwoods. Each rainy season Big Cypress floodwaters flow into these mangrove wetlands, freshening them and flushing out decayed nutrients. As a result, the mangrove fringes are among the most bountiful marine nurseries on earth.

Elsewhere in the Big Cypress, stretches of snake-infested pinelands and palmetto thickets abound. The most striking landscapes,

Hanging garden of Spanish moss, orchids, and other air plants in a pond-apple tree shades a slough. The trees grow "so thick you don't walk," says Gator Bill. "You get down on your belly and slither."





12 Mon 80
Jugo Swain
10.36

26° 53' N

81° 18' W

1 1/2



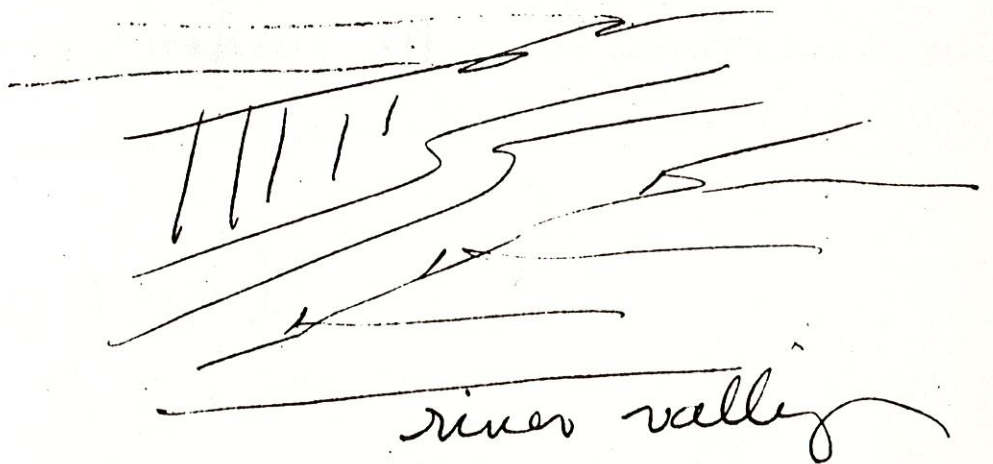
26° 53' N

81° 18' W

M M M Trees
Jungle.

26° 53' N

81° 18' W

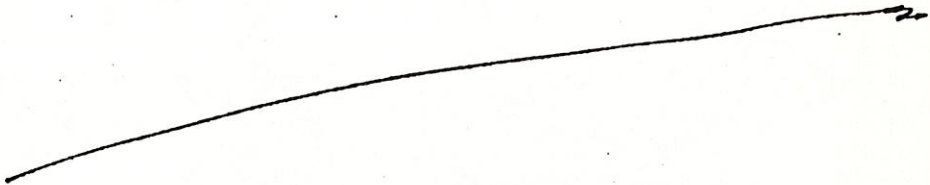


12 Mar 80

10:36

(2)

26° 53' N
81° 18' W



like swanah

26° 53' N
81° 18' W

|||||

slightly redundant target.

c

Ochopee

(Ochopee)

OCHOOPEE
BIG CYPRESS HILL
PRESERVE



Crater-pocked time bomb, Taal Volcano rises from Lake Taal. 40 miles south of Manila. Dormant for half a century, the volcanic island suddenly erupted in September, 1965, blasting out the inlet at upper right and spewing ash and pumice from the new crater in the inlet. Steam shot a thousand feet aloft, spreading debris so thick that it buried scores of the cataclysm's 200 victims and their flourishing stands of coconut and banana. Two days later the volcano still belched (inset).

Nearly 3,000 people lived on the five-mile-long by three-mile-wide island before the eruption; many have since returned to their homes. Water-filled crater at center of the large picture formed in a 1911 eruption that claimed 1,335 lives.

3.4 Morek 80

002

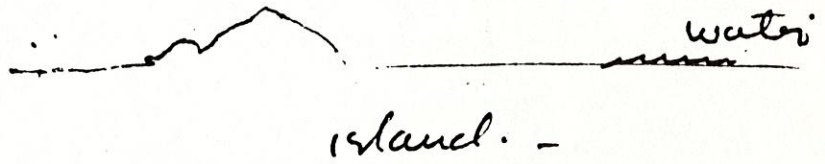
9.17

14° N

121° E

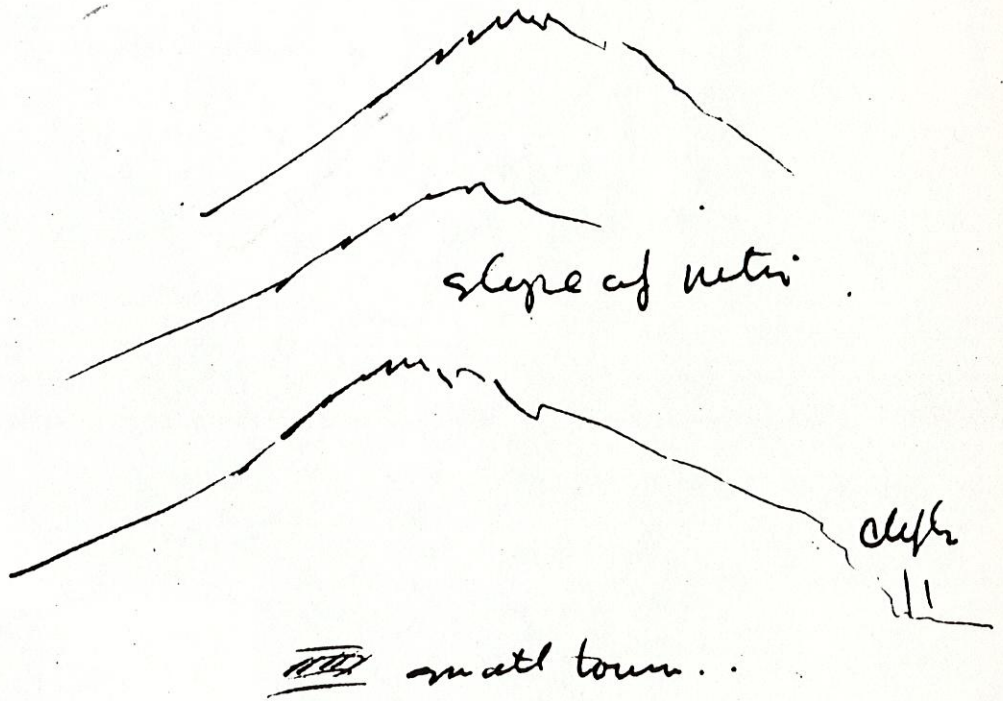
14° N

121° E



14° N

121° E



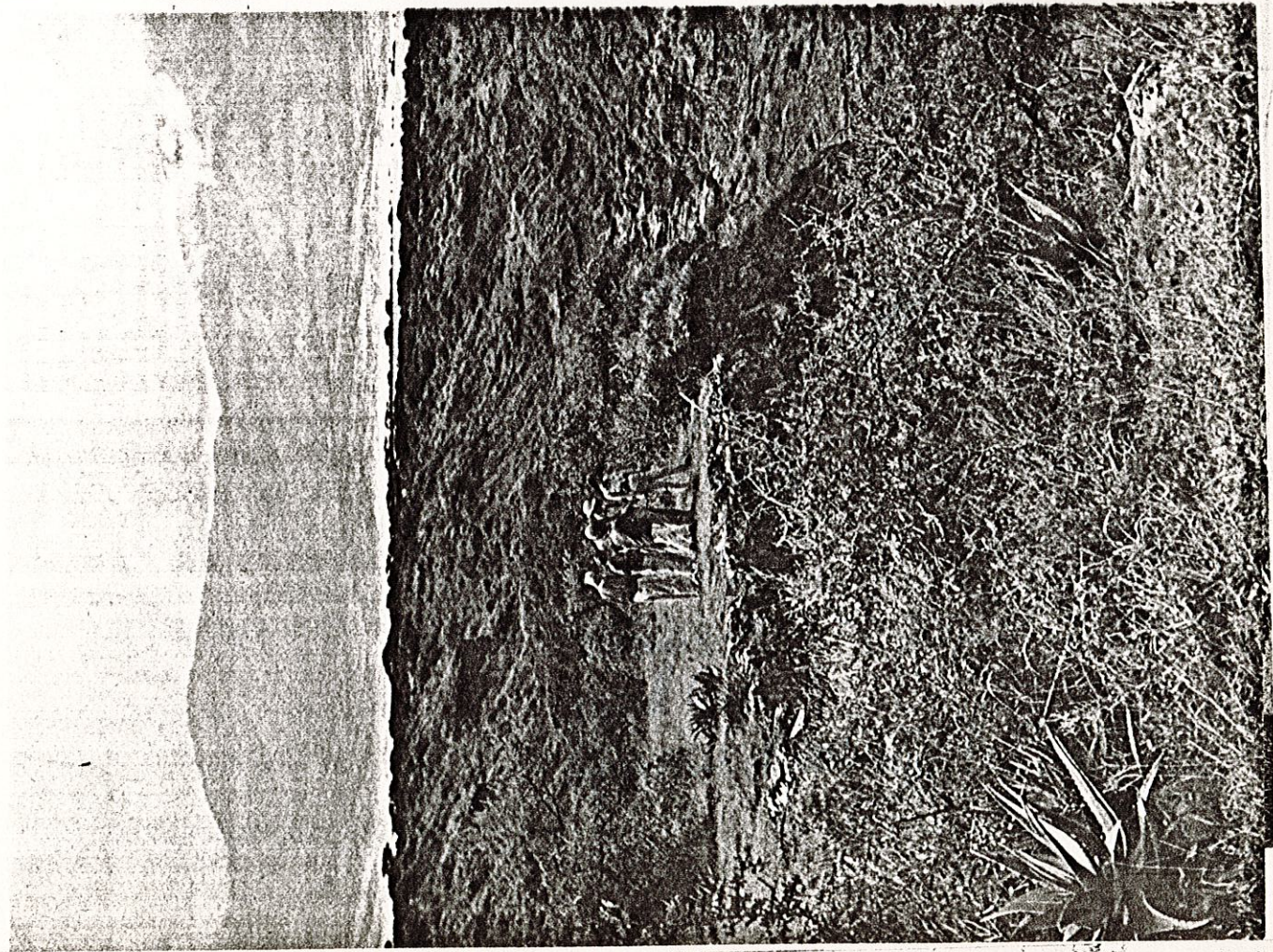
~~with jungle.~~

river

looks volcanic.

Lake	Tail
CLASS B	

PHOTOGRAPHS BY EUGENE WOODS AND LAWRENCE J. NATIONAL GEOGRAPHIC SOCIETY



Physically inclement.

34 March 80
Jugo Swani.
8.36

2° 50' S
35° 13' E

2° 50' S
35° 13' E

2° 50' S
35° 13' E



water

~~##~~ #

~~#~~
mud huts - -

dry.

ruins?

mud huts?

African dwellings?

Uluancha 80

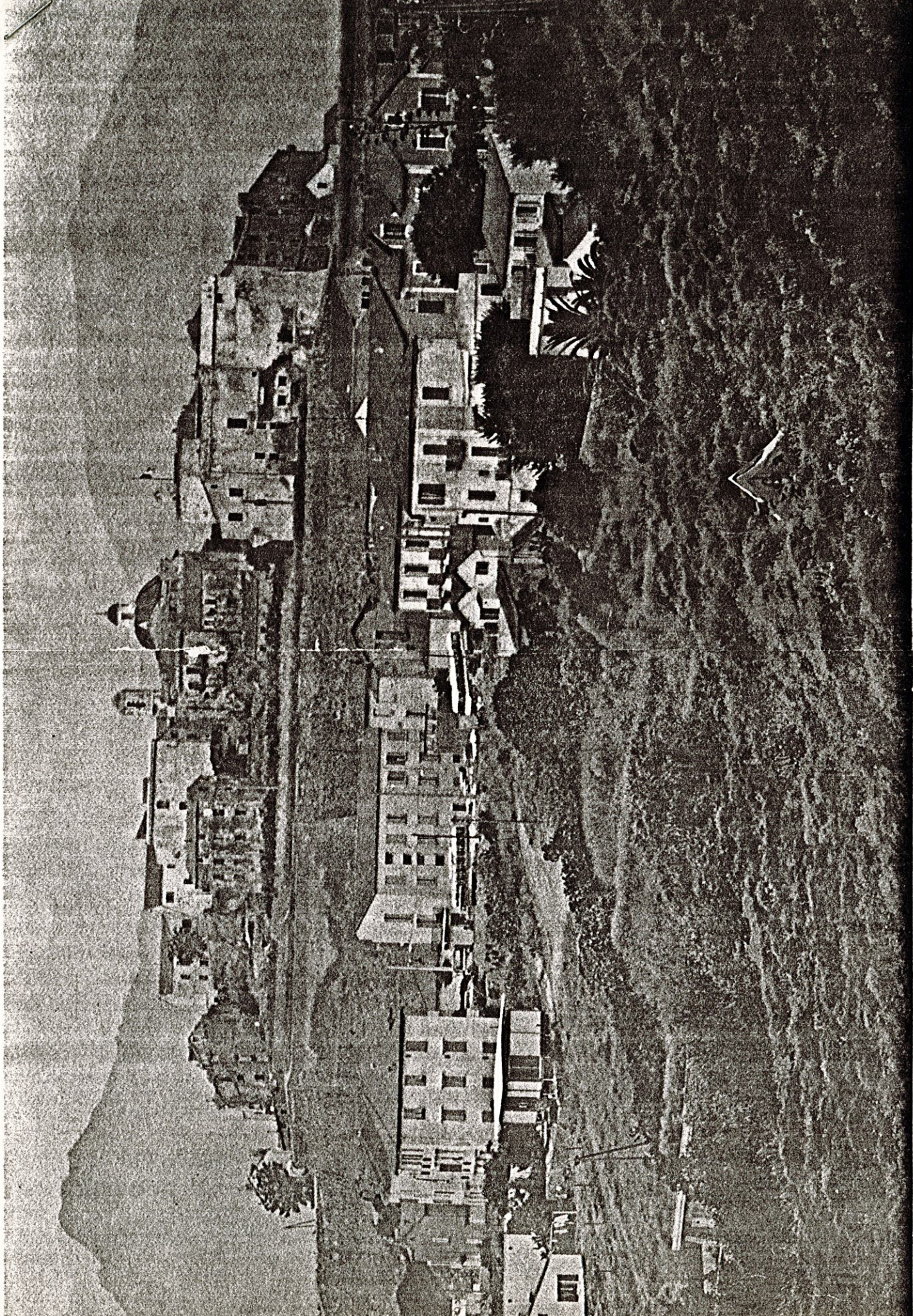
8.36

2° 50' S

35° 13' E



OLDUVAI (GORGES)



1951

Sunset's afterglow bathes the citadel of Calvi in a peace seldom enjoyed during the city's turbulent past. In the 13th century, Genoese rulers fortified and colonized Calvi. The bastion endured attacks by Turks,

H: The time is 10:21 a.m. 42°34'N 8°44'E.

S: Buildings.

H: Correct.

S: I see a very large stone wall.

H: Can't feedback.

S: I see a large building protruding out of it. Definitely buildings,
this is a town.

H: Correct.

S: This is water.

H: Near the target.

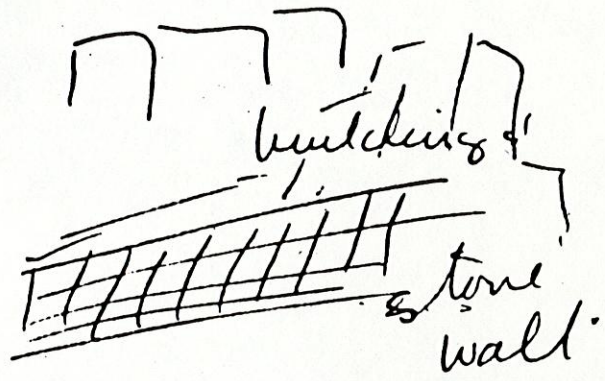
S: That is good enough, just so I was getting it down.

H: It is the town of Calvi on the Island of Corsica. It has a stone wall
with buildings on it and the beach is right here.

APPENDIX
Calibration Target

1021

42° 34' N
8° 44' S



town -

