

opening commentaries

Future possibilities

Resistance

Past characteristics of parapsychological research.

Future researchers —

Criticisms

role + function of ^{general psychic} giftedness
on the individual
psychic.

Necessity for innovative research.

If it is true, and it seems to be, that present-time parapsychology is self-limiting in its effort to appease, ~~and~~ convince or ~~win over~~ ^{operate within the constraints} biased critics in science, then the field is limited in proportion to the presence, numbers and powers of its non-believers. _{posed by}

SOME CONCEPTUAL NOTES ON THE **SOCIAL**
OVER-VIEW OF FUTURE PSYCHIC
RESEARCH

Introduction

It seems almost impossible to achieve an over-view of psychic research, or its future, without succeeding in observing the state of the art from several different, and differing, points of view. Actually, this seems a common-sense thing to do, yet it is not done at all, or hardly ever, concerning psychic research. The divisiveness within the field of parapsychology, (as well as within the social fabric it is steadily invading) is more characteristic today than is any ~~emerging~~ ^{over-view or} cohesiveness. Many faults can be found, in past parapsychological research modes; yet it seems unrewarding, and fruitless, to dwell too long upon them. Many successes can also be pointed out; except to mention these, where pertinent, it seems misleading to dwell upon them out of context, since it is ~~obvious~~ ^{possible} that future psychic discovery, and general and individual psychic prowessness, are quite likely to little resemble predecessor concepts. Yet, because of the heightening intensities in the several areas/psychic concepts are unfolding, ~~it seems that contributions speculating a little upon future psychic developments, in general, are desirable.~~ ~~over-view contributions seem desirable.~~ psychic research seems to be engendering a significant future. It seems necessary and desirable to try continually to have a grasp of the ~~implications~~ ^{trends} involved, ~~on the several fronts involved~~ ^{especially in the societal sense}, even if that grasp is tentative or temporary.

~~It is usually.~~

NB - what constitutes the spiritual person?

Tapo for Kalif (painting)

Stretch Parker:

The social position of
and
Past, present ~~and future~~ psychic research

It seems hardly salient, at first glance, to indicate that ~~in psychology~~
~~parapsychology~~ there are believers and non-believers in psi phenomena,
since each and every emerging scientific effort has possessed this dichotomy
in its emerging stages. Psi research is yet in its emerging stage, however,
overwhelming presence of this
and the dichotomy, possibly an understanding of its trends, seems significant.

There have been several brilliant theoreticians and experimenters
in psi, most of whom would fall into the believer category, but most of whom
have, indeed, produced meritorious work and results. This work, in the
greater arena of science and society, is seldom studied for its merits,
but to the contrary, is colored by the resistances to psi phenomena by
the non-believers. The work is therefore forced into the stages of
controversy, proof, disbelief, argumentation, disrespect and, often, ~~assassination~~
scientific theoretical, and individual character assassination.

The general response, within parapsychology, to this dichotomy is to
continue to try to conceive of unarguable experimental modes the results of
which ~~demonstrate~~ ^{will} eventually quiet the challengers, and bring psi research
(and the field of parapsychology) into acceptability.

Because of this situation, then, where the response of parapsychologists
is primarily to ^{meet} the demands of non-believers, past and present psi research
is controlled ^{and limited} ~~mainly~~ by the non-believers. Parapsychologists find it difficult
and formidable to try to conform their results to their critics, and at the
same time push through the ~~reservoirs~~ reservoirs of criticism, attack and
disbelief that the non-believers have at their disposal both in the scientific
and social realms.

Many parapsychologists are aware of this situation, and seek to extend
parapsychology beyond the dichotomy. But all too often their hypothetical
solution is merely an extension of the primary situation: they hope to find,
within psi research, a panacea, something that equates to an Einstein theory,
that will overturn all resistance in one fell swoop.

Possible limits of present parapsychological ~~Research~~ ^{social} ~~modes~~ ^{concepts}

As can be seen from the above, if parapsychological research modes are geared to meet the demands of admitted non-believers as scientific critics, this in itself tends to constrain the field of parapsychology and to impose limits that are uniquely in the hands of the critics. The existence of this artificial limiter, in both the scientific and social sense, is extraordinarily observable if one studies the social situation of emerging parapsychology since, say, 1933, when the brilliant team of Rhine/^{and Pratt}working with Pierce began to make inroads. Most parapsychologists, since then, have been compelled to answer not for the success of their experiments, but to the social impact upon the non-believers.

A reasonable guess as to how much of the parapsychological effort, since 1933, has gone into ~~unright expenditure~~ trying to convince, demonstrate to or to appease the scientific critic as non-believer, would be somewhere in the vicinity of seventy percent. And this may be conservative. For example, it appears that America's two largest parapsychological institutions, the Rhinean school and the American Society for Psychical Research are almost totally constrained by this negative paradigm. Break-away researchers, such as Tart, Honorton and Puthoff and Targ, likewise find themselves constrained, possibly to a lesser degree, but nevertheless are required to devote massive amounts of time and effort to reply to critics, all most all of whom have openly stated that they are disbelievers.

The social concept, or the major social concept, of parapsychologists has therefore been to get along in science, but this "getting alongness" has been at the behest of ~~disbelievers~~ disbelievers posing as scientific critics. There are numerous analogies in the history of science: the emergence of vaccination, for example, or the development of aerodynamics, both of which possessed their ^{biased} ~~hardened~~ critics ~~at one time~~ during their ^{emerging} ~~dichotomous~~ stages.

Nov 11 77

Playing 21-

one seems to have
to be not in PT but
in a space just
out of it.

future? other?

Nov 11 1911

Virginia

Virginia

Friday -

107 Ps 9

L. 20

Feb 2, 1977

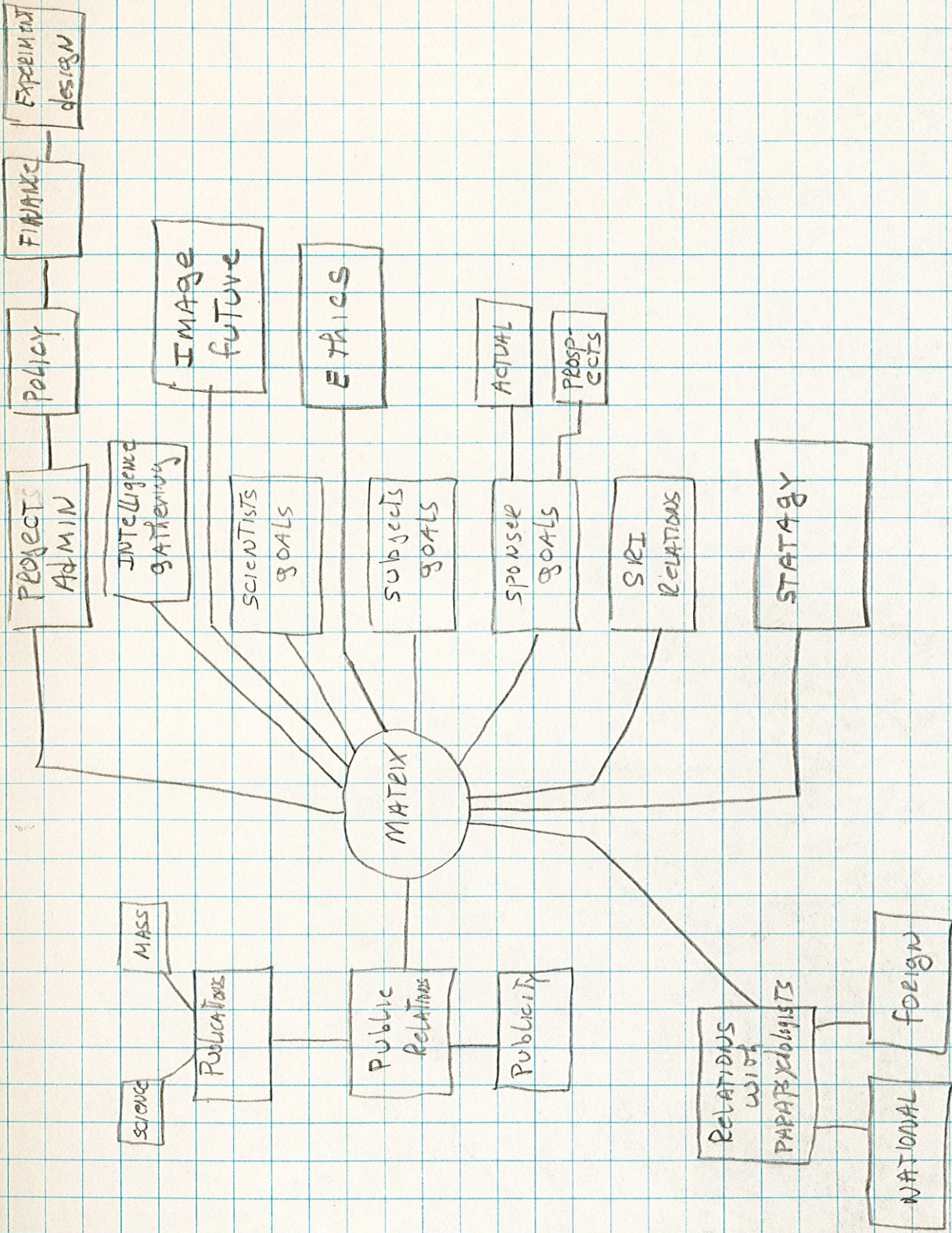
16:00

E. MAY

H. PUTKOFF

I. SWANN

R. TARG



Sup Swann
17 Feb 77.

S.O.S.

5.05.

2.9(2)
3.6(1)

ZBIS.

John Wilhelm -
LFRJ

3.3.

ARCRK -

yes -

feel like a fool and
an amateur compared
to Wilhelm

2.
3.5.

A /

R x

A x

U x

yes - my overall
A went out -

D /

E x

I x

yes - missed the
conline +
A line with
Wilhelm - 2.9

I ← x → John

2.7.

LFRJ on flash
that is the agent of
extraterrestrials

no

no's
amusement.

rgis - left on
Das extraterrestrial -

2.6.

ARCRK -

no -
no
rgis

12
End of 5.

5-20 .

DTS To food —
make list .

Books on remote viewing
Historical + present
future

locks
99° temperature

13 July 76

arm 3.0 2
tongue 3.0 (1)
bowels
head
picture 3.1

its a picture of telepathy - (M)
onverts :::::

PT stimulators against ^{4D} telepathy -

(M)

Black field -
black
individual fields -
general ^{black} fields

blankets:

the sum total of banks -

reactive banks -

the oslness in MIP S -
resistance:

(M)

(VSC)

end. 2.9 -

I must have duplicated that
guy's banks at the time:

18

Satellites

THE 12 KNOWN SATELLITES OF JUPITER constitute a remarkable system, resembling somewhat the solar system itself, with a close inner system and a distant outer system that can also be divided into two subgroups according to their proximity to Jupiter.

INNER SYSTEM

The inner system consists of five bodies. The four large satellites of this system (called the Galilean satellites) were discovered in 1610 by Galileo within a year after he made his first telescope. These four are either identified by Roman numerals that indicate their order of distance from Jupiter or by mythological names, which were proposed by Simon Marius, who discovered them independently. The satellites are called Io or J-I, Europa (J-II), Ganymede (J-III), and Callisto (J-IV). Because the other satellites are very small, almost 3 centuries elapsed before they were discovered. Jupiter V (the tiny, innermost satellite) is difficult to observe because it is small and revolves rapidly about Jupiter close to the planetary surface. This satellite (also called Amalthea) was discovered visually by Barnard in 1892 with the aid of the Lick Observatory 36-inch refractor.

The five inner satellites revolve in nearly circular, equatorial orbits with the same direct motion as the planets (counterclockwise when seen from the North Pole of the ecliptic). They are close to their primary with the innermost satellite, Jupiter V, at approximately 2.5 radii from the center of Jupiter and the outermost, Callisto or J-IV, 26.4 radii from the center of Jupiter (fig. 18-1).

GALILEAN SATELLITES

The four Galilean satellites are very large and can easily be seen with a small telescope or good field binoculars. According to Dollfus (ref. 245), their diameters range from 3100 kilometers for Europa, the smallest, to 5600 kilometers for Ganymede, the largest (fig. 18-1, refs. 246-252). Some uncertainty still prevails, however, as to the diameter measurements of such objects which at the great distance of Jupiter subtend only 1". The two largest, Ganymede and Callisto,

Halstead Category Test:

Brain & Intelligence: Word Halstead
1947

(Papachach:
Report)

Ability to form & change sets:

Einstellung Problems:

Viewpoint changing:

Rigidity/flexibility/perception

Field dependency/independency:::

Hidden Figures Test.

Gottschaldt Test (figures)

B

Primary Mental Abilities
Spatial relations
(Thurstone)

Change in the body physical.
" " mental
etc.

Create a map of parapsychologists
by name, date of birth etc.
game board.
influence entire game.

March 10, 1976
Jugo Swann

3.0 (2) (PNO)

3.75 (1)

The theta universe! Well well - its different
from the PU.

Flows

Wave lengths.

Taking positions on wavelengths.

Theres a little knocking about there.

(PNO) vgi.

Should spend some time there

" " " " spotting flows.

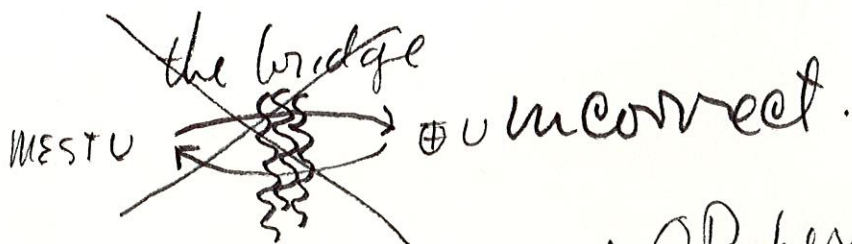
LFBD.

Should operate there

OT

Full OT.

Uhm? vgis.



Yes OR here?
Yes

March 12, 1976
Jugo Swann

3.0 (2) θ
vgi.

SDM.

3.2 (1)

θ is something to flow along -
eg! I have a ridge on flowing along.

2.9

vgi:
its hitting the ridge that produces charge.

3.0.

in horse racing the ridge disperses the
perceptions



well the ridge has to go.

an incident that could have created
a ridge on the bridge. vgi.

2.8

Jugo Swann
12 March 76

S.O.S.

10.49
~~2.8~~

2.8.

1. Locate an incident that could have caused a ridge on the bridge.

yes.

2. 1548

3. -

4. still going on.

5. yes.

6. I saw that damn flying saucer. it covered me in.

-9.

run this incident before on another chain..

A-D

I was operative in the Θ . but covered in on being reminded of the excentrications.

Σ or S.?

S.

1. yes

2. 299 B.C.

3. yes

4. 30 years.

5. -9-

it was a battle-ched down among flailing horses. exterioriz~~ed~~

a ridge against-the nest 0.

~~2.75~~

closed it off! too much hard randomness ::::

2.75-

A-D.

OK.

Σ or S.

S.

1. yes

2. 38 Billion years ago.

3. -

4. still going on.

5. cog: ridge(s) is a damper on random motion!

I hit a cosmic storm — got buffeted — had to change my frequency not to feel it — a ridge is a counter frequency.

(ru)

cog

vg 1.

one should be able to take position on any frequency or wave length — that is THE bridge.

S. or S.

S. reads.

there seems to be an implant designed to make the bridge invisible

2. 75 Q years ago.

3.

4. still going on.

Black or invisible ridges can be black or invisible.

5. ay

6 atlantic type of cw.

7-9.

cog!

2.5
ha — one gets stuck on ridges since they are heavy magnetics and are solid non-sensation.

— I hold onto ridges —

A-D.

ridges are common dis agreement. or agreements — MEST —

EPhere.

more cog.

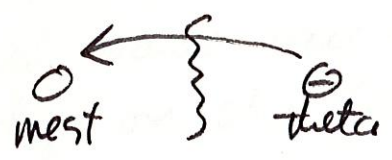
OK.

A-D.

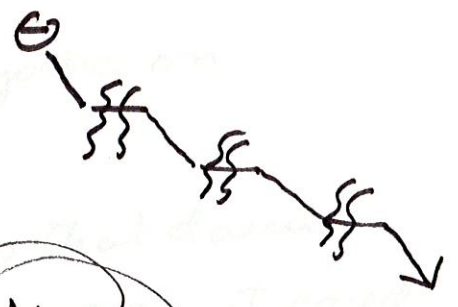
ridge has pressure therefore
charge.

A-D.

I can have
ridges I guess -



theta can spot ridges.



2.5

2nd flow.

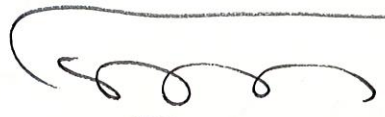
1. yes - lots of times
for control purposes.

3.

2. gone.

2. 2.4.)

3rd flow -
ridges all over



vg1.

End.
read
880.

11.21.

Jugo Swann
14 Oct 75

S.O.S.

11.52

3.0C2
3.9C17

So - the great
fuck up hangs on.

I recall it all
began in Tenn. Sort
of hay fever - goldenrod -
tons of it all over.

3.5

Just before it all began
I was in super shape -
exploring games exterior
reading the HF notebooks.

3.3

Making notes on what
related to exterior cognitions.

The thing that comes

especially to mind was
the comment that there
is no theory in the West U.

also "the postulates beyond" p. 24.

searching.

2.9.

2.25(1)

(M)

disagree / agree with
MSSTU -

the 1000 forces effect of
West U on one. agreement!

condensed energy

toilet

ok found it. p. 22. 3.7(1)

the thietan feels very
propitiative because he stole it.
(the G.E). 3.5.

Did this re-stimulate something?
2.9

ok - what happened there?

well, for one thing my
perceptions collapsed. LF

I think I got thetan +
GE confused.

2.7

yes I got $\Theta + GE$
confused - $\Theta + GE$ collapsed
into each other, LFBD.

2.6

I see another time
there must be an implant.

wow!

an incident that could
have caused the Θ + the GE
to collapse into each other.

no - this is not
the choice - LF

it's a picture of
just the opposite.

LF
vryis :BD.

of the $GE + \Theta$ operators -

there's a large
(M) here

no cog -

the-thetan feels proprietary

(all the time I stole
something.)

because he stole it.

there must be

Θ games

ment games

Θ games = agreement +
of/whealm -

ment games - conquest +
theory -

so - it wasn't Θ
collapsing into GE -
but ΘU collapsing
into $MEST U$.

wow! how Raw!

the GE dispersed!

I guess I collapsed^{2.4}
(proprioceptive) into the
GE -

the GE & I watch
each other.

Locate the GE -

a small dot in
the lower right lung.

Locate me -

a sort of energy
shield ^{over-} on the head -

I'm bending the
body a little -

(ru)

(3)

ngis -

S.O.S.

2.4