

1276 00

1276

tom
25 Aug 82
9.28

73° 30' N

79° W

I

A rising C

B -

Miss.
Breaks.

"

I

A rising C

B -

A flowing
B water

"

I

A rolling

B Hal Break
water.

S-2? bluegreen pc

"

I

A solid.

B land C

S-2 rocky pc
dark brown
wet.

1276 00

A solid
B land

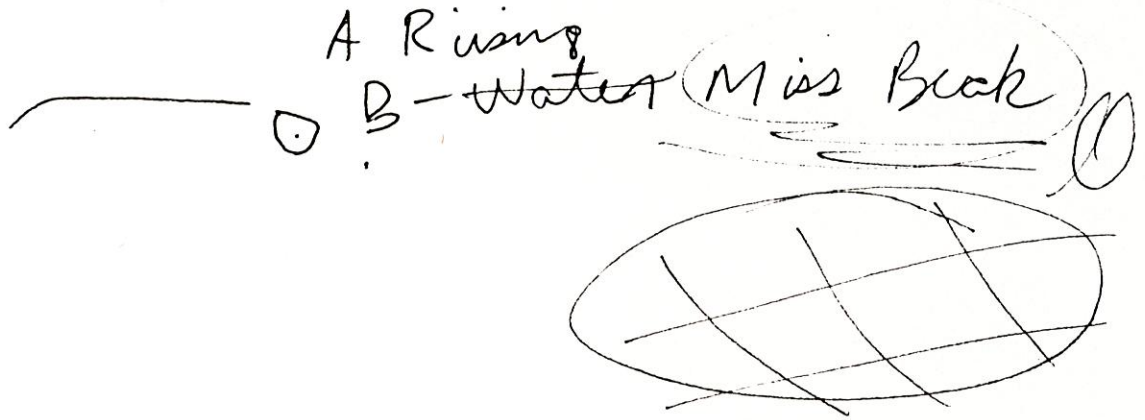
S- A flowing
B water.

c/w interface

1276 00

Tom
25 Aug 82
0928

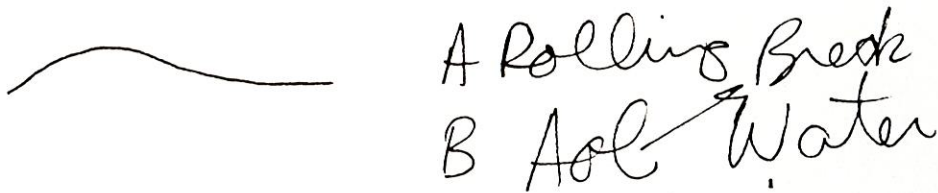
73° 30' N
79° W



73° 30' N
79° W

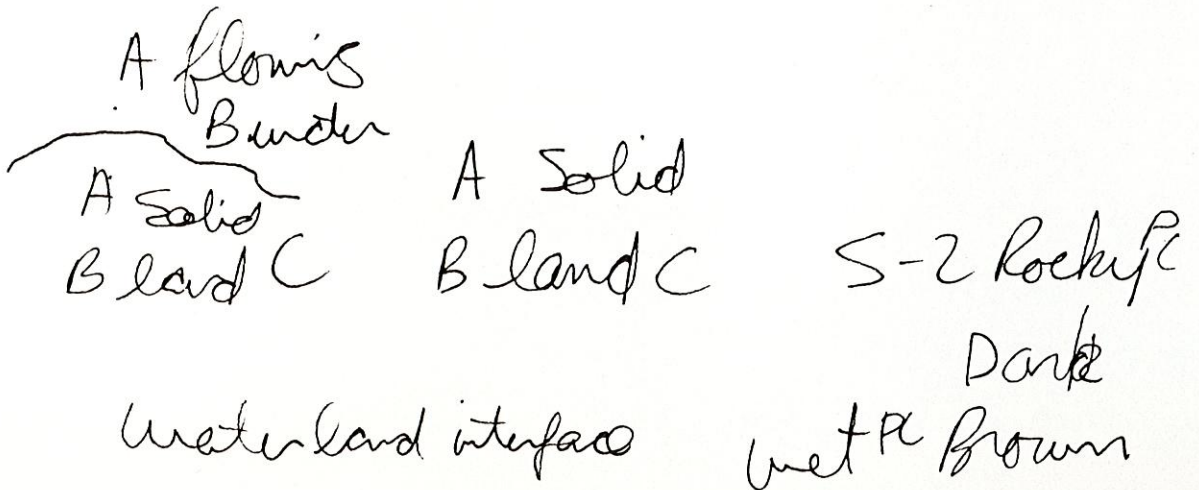


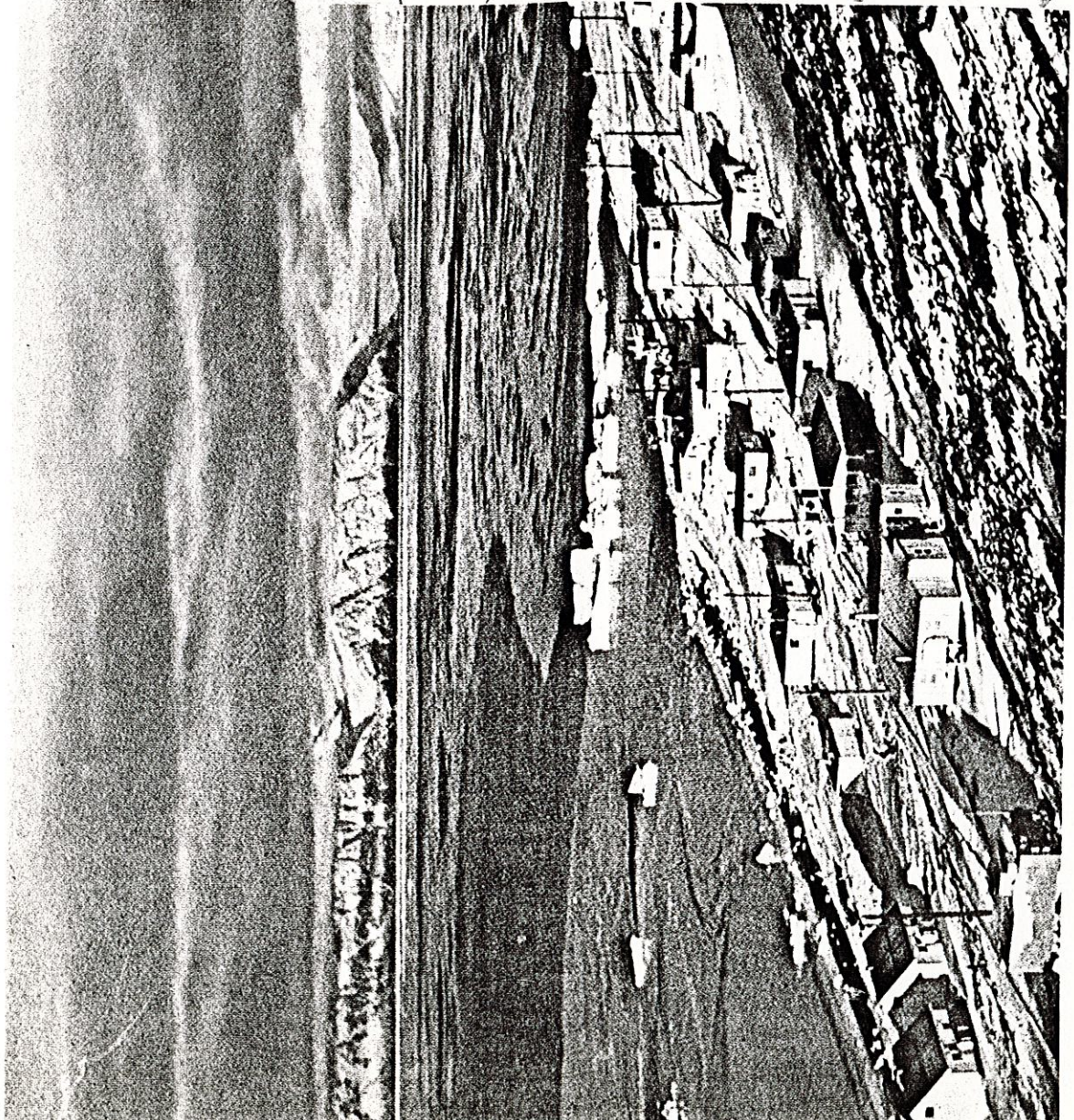
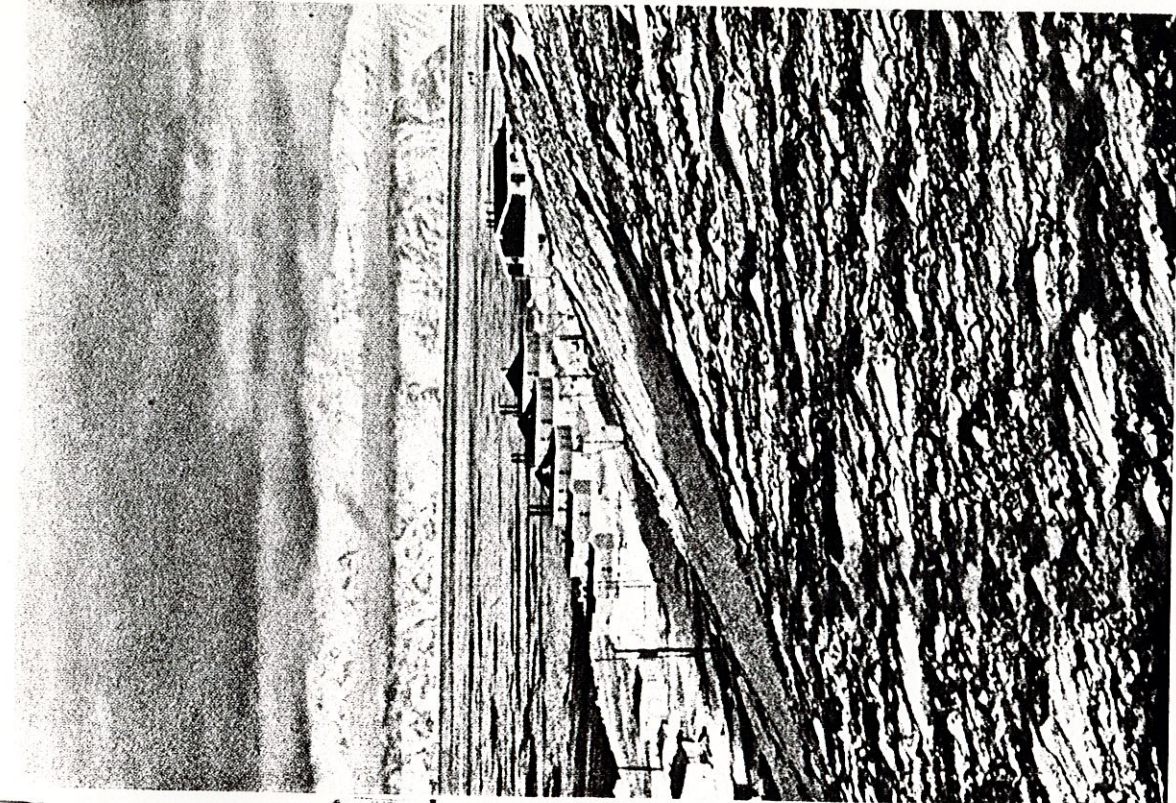
73° 30' N
79° W



S-2 Blue Green

73° 30' N
79° W





ENTACHORES. (6) NATIONAL GEOGRAPHIC SOCIETY



were we distinctly nonprofessional as diagnosticians; our patients often had difficulty describing their ailments, which they sometimes attributed to evil spirits. An Eskimo treatment for such illnesses involved changing one's name in order to confuse one's suspected tormentor.

One Sunday in Repulse Bay I learned of a man who was said to be critically ill. Rushing three miles to his igloo, I got him to tell me of

emphasize that there has been little illiteracy in the Arctic for decades. Most people can read and write in Eskimo, using a syllabic alphabet introduced by the missionaries.

For several years at Igloodik, when supply ships failed to come and the Bay store closed down, missionaries ran a community store, stocking it with goods brought by dogsled from Arctic Bay, a 300-mile trip. Our customers seldom carried. When the temperature

S C A st of B gl its se a of Po Be ge and dist oil :