

1278 00

Tom
25 Aug 82
1.32

60° 40' 45" N
151° 5' 45" W

♀

A

M
Break.

"

♀

A curving C
B —

~~S-2~~

A solid
B land C

A solid
B land C

"

I

A flat solid
B land PC

A wavy
B water PC

1278 00

(2)

S-2? —

W/L interface
S.

Encl.

1278 00

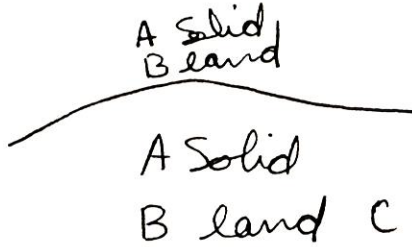
Tom
25 Aug 82
1332

60° 40' 45' N
151° 5' 45' W



A - MISS - Break
B -

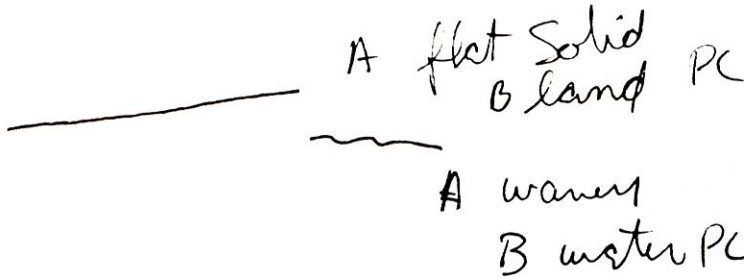
60° 40' 45" N
151° 5' 45" W



A - Curving C
B -

S-2 -

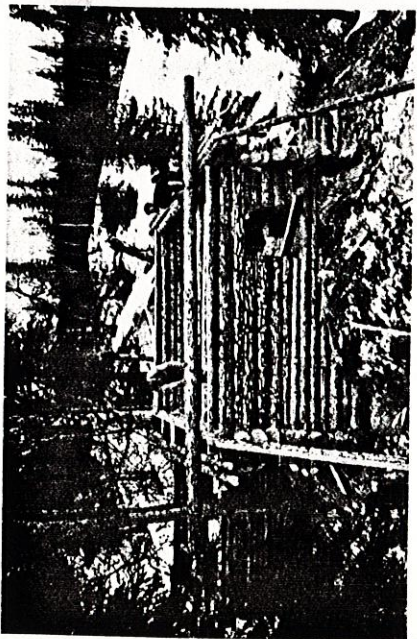
60° 40' 45" N
151° 5' 45" W



S-2 -

w/L interface (S)

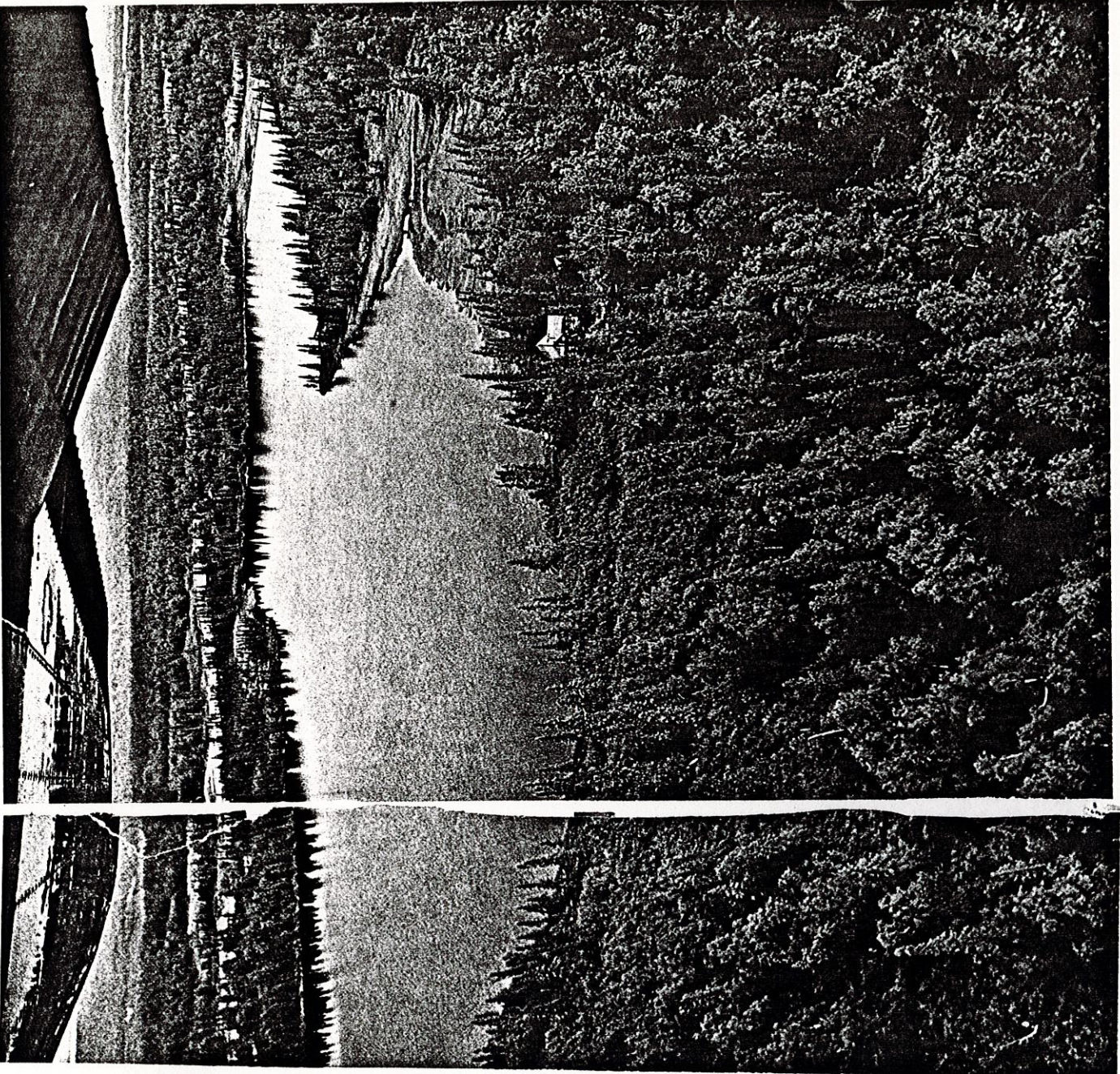
1278 00



JACKY JOHNSON (ABOVE) AND ELLIE S. ROGERS

WITHOUT MACHINERY, Pete and Dave maneuver the cabin's heavy ridgepole, which they had rolled up the logs leaning against the wall (above). Two of our college friends and their wives have settled near us in the bush. Sharing pioneer tasks, we all help each other at cabin-building time.

The cabin we now live in (right), our second, lies across Ermine Lake from the new Anchorage-Fairbanks Highway (map). Before completion of the road, the 34-mile round trip to the railroad stop at Hurricane for mail and supplies took a day by tractor and truck or snowmobile. Now we can get there and back in an hour.



1278 00