

1260 00

tom
27 Aug 82.

12.47

26° 37' N

76° 57' W

9

Horv Hor.
ve

A cirrus c

B —

A solid.

B land c

A wavy c

B water .

Aal. shore c.

Brab.

S.2? grey green pc

slimy cef.

rocky.

smattered cef ..
rocks

A1? —

11

9 c

A cirrus.

B water c

A solid.

B land c

A wavy.

B water c

Island pc

1260 00

26° 37' N
76° 57' W

♀

A vertical
mammals
B building c

S-2? square.

brown
green
yellow) cf.

A1? —

L/w ♀

Probably + stand,

w/ buildings.

End.

1260 00

Tom
27 Aug 82

1247

26° 37' N
76° 57' W



A Solid

B land

A Curving

B —————

A Wavy

B water

L/W interface

shore not Break

26° 37' N

76° 57' W



A curving

B water

A Solid

B land

A Wavy

B Water

S-2 grey
green PC

slimy CFB

Rocky CFB

Smooth

Island PC

1260 00

26° 37' N

76° 57' W

)

A Vehicle Manmade
B buildings C

S-2 Square

Brown

Green

Yellow

#1

L/W interface prod Island
w/ Buildings Not Back
~~Island~~

End

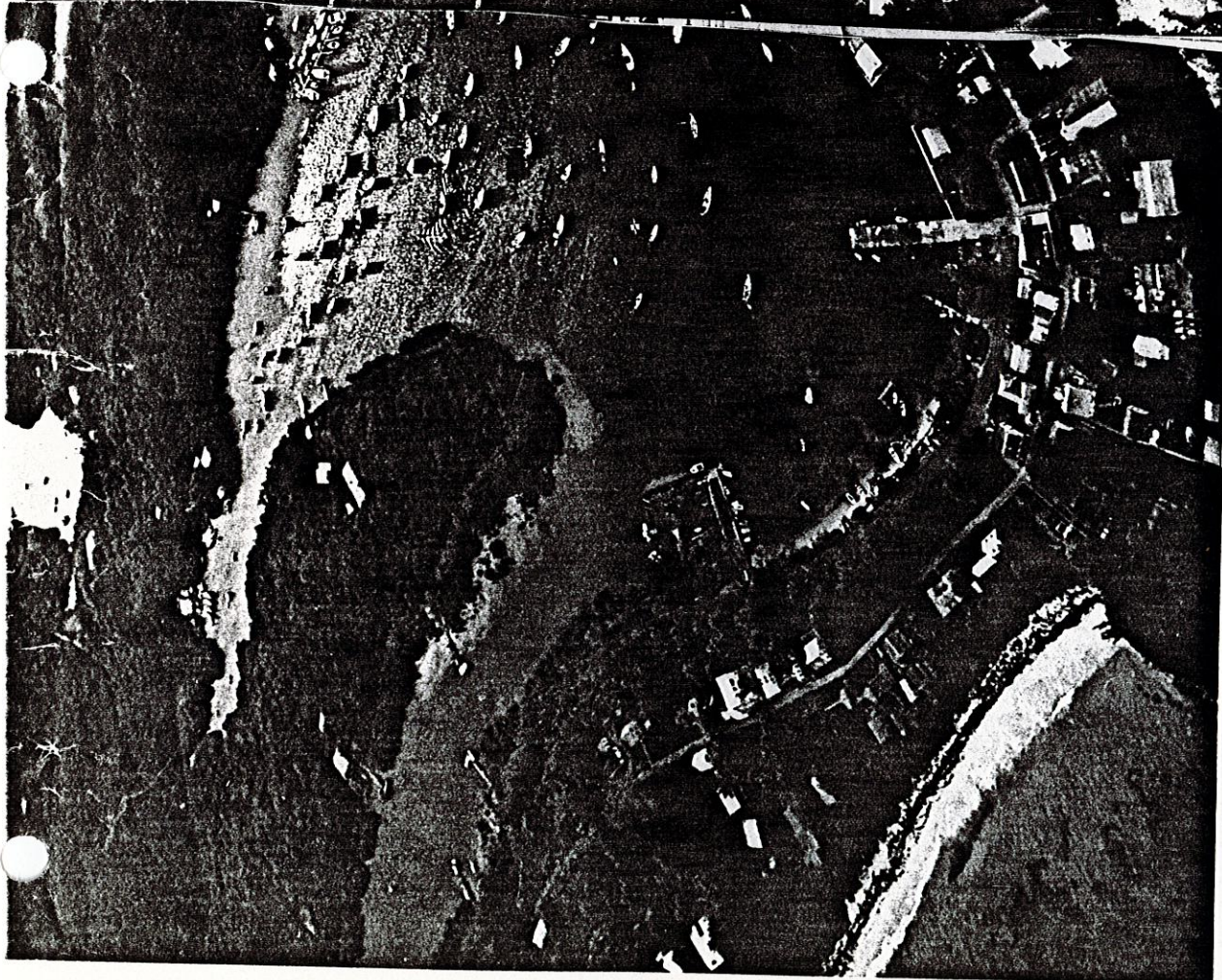
1260 00



Architect of independence, Prime Minister Lynden O. Pindling (left) came to power in a burst of Bahamian pride in 1967. He early shook foreigners' confidence in real estate investment in Freeport when he took steps to reassert control over immigration and labor, formerly granted to the huge foreign-owned development under a charter that had made it almost a state within a state. Construction such as that along the Grand Lucayan Waterway (below)—with 90 miles of bulkhead and roads, water, and electricity installed—came to a standstill. Residential real estate sales elsewhere in the Bahamas rose in the '70s, but in 1979 proposed new policy threatened a foreigner's right to purchase land. Residential land sales



1260 00



Round-the-compass shelter and open Atlantic beaches lie within strolling distance in Hope Town, one of a string of Abaco cays communities founded by Loyalist refugees from the American Revolution. Each maintains a distinctive character.

380

1260 00

National Geographic, September 1982



Some little touched by outsiders, others hosting small resorts. Harbors fill with pleasure boats drawn by the discovery that the Abaco cays, stretching 110 miles, enclose a virtual inland sea—among the world's finest cruising grounds.

The Bahamas

1260 00

381