

1287 00

tom
1 Sept 82
9.17

44° 29' 59" N
114° 17' 29" W

♀

A rising c
B hill c

"

♀

c

A rise down..
B peaks c

"

♀

A rising angle.
Manned
B Buildings

S-2 grey
white / pc
green

Squares c

columns
Aol Breaks

Hills peaks w buildings
Squares -

1287 00

Tom
1 Sept 82
0917

44° 29' 59" N

114° 17' 29" W ✓

A - Rising C
B - Hill

44° 29' 59" N

114° 17' 29" W



A Rising Peak Down
B - Peak C

44° 29' 59" N

114 17 29" W



A Rising Angle Down
Mammade

B - Buildings S

S-2

Grey pc

White pc

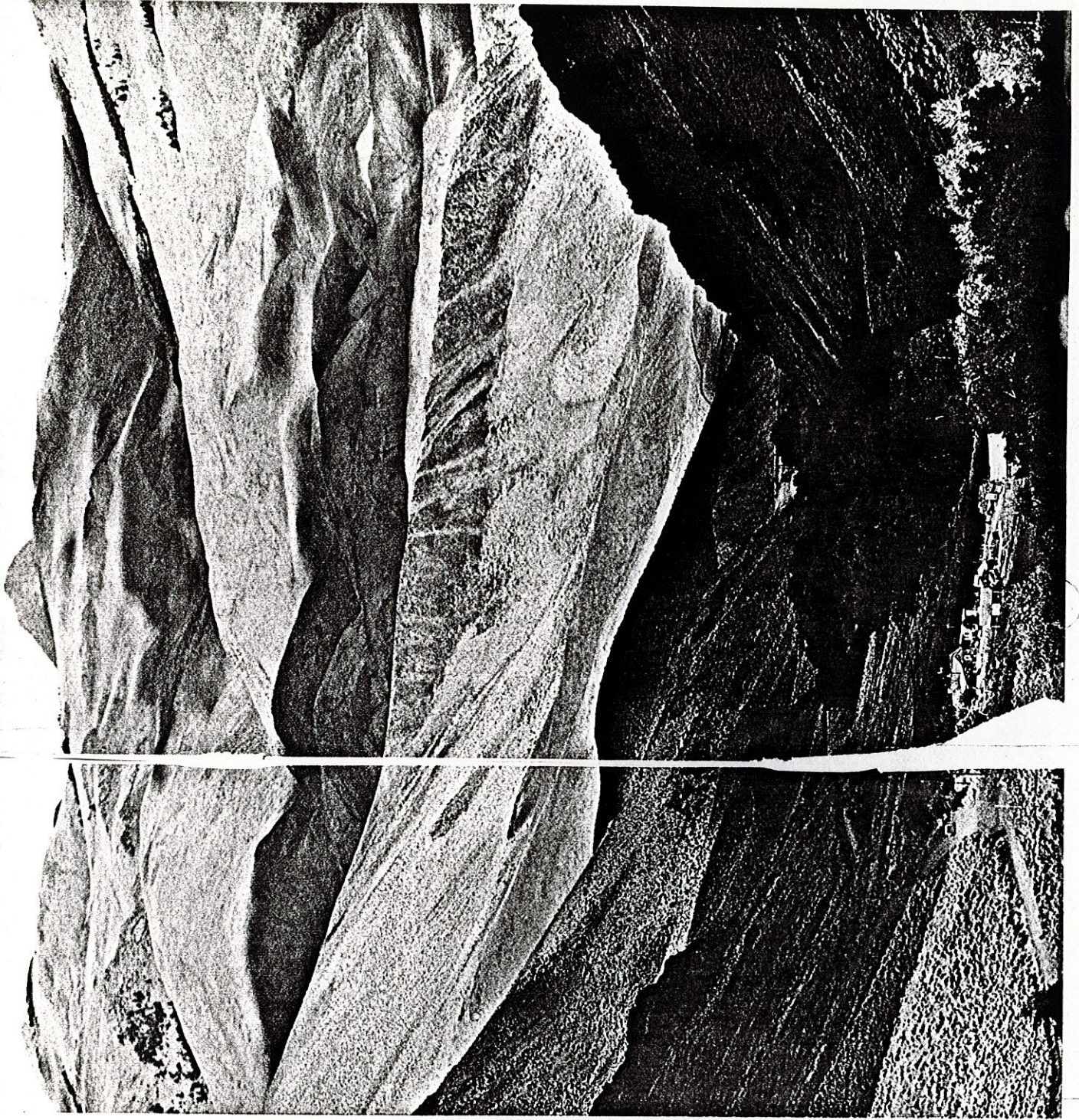
Green pc

Squares C

Columns
| Aol Breaks |
Columns

Hill / Peaks w/ buildings / squares

1287 00



1287 00



Stubble sprouts from the face of a trail-riding ranch hand during roundup. Joining a crew of wranglers in the hills, photographer Conger found them living true to cowboy tradition—riding hard from dawn to dusk, then playing poker and sipping whiskey far into the night.

Hills piled on plump hills curtain the sky behind a toylike ranch in Klug Gulch. The arid, sage-clad slopes lie mostly within Challis National Forest; nearly three acres of every four in Idaho are under government management.