

1238 00

tom
16 Sep 82
2.12

28° 4' 40" N
86° 52' E

M
Breeds

"

I

A curving
B land C

S-2 droppings C
brown cry
rocky C

Bad breeds

cliff / w
large valley PC

S-2 green
dry cry
veggen C

"

I

A flowing
B water
Bad breeds

1238.00

28° 4' 40" N

86° 52' E

I

A mixing
B land c

S-2 climbing c
high c

A/B Break
In tired.

large.

"

I

A wavy
B land c

S-2 many c
High c

ridge line c

light color c

coal c

clean smells c

cold c

windy c

very cold c

hard c

rocky c

wet cef.

very porous c

1238 00

③

grey pc
black cy
very rugged mts c
shop peaks pc
wind sounds c
open air sounds c
white c
blue grey c
grey c

mt range
very high
white & very cold
makes snow.

End S

1238 00

TDM

16 Sept 82

1412

28° 4' 40" N
86° 52' E Miss Beck

28° 4' 40" N
86° 52" E



A - Curving

B - land c

S-2 droppings c

Brown CFB

Aol Belak Rocky c

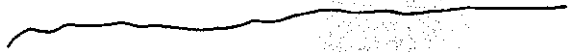
Cliff w/large
Valley PC

S-2 GREEN

Dry CFB

Vermopan c

28° 4' 40" N
86° 5' E



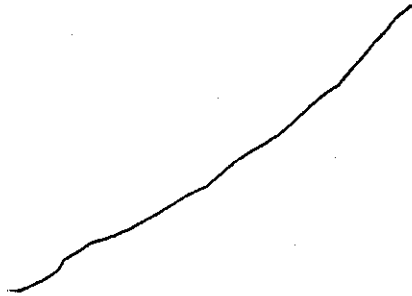
A - flowing

B - water

Ad Bedk
Water

don't be automatic

28° 4' 40" N
86° 52' W



A Pitons

B land C

S-2 climbing C

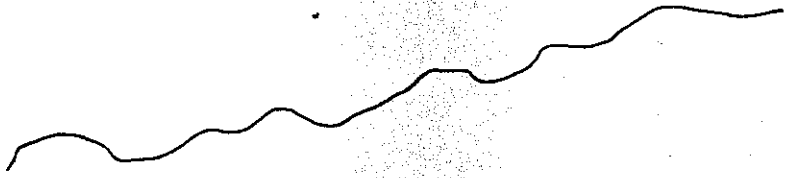
Ad Bedk High C

Tired
large

1238 01

③

$28^{\circ} 4' 40'' N$
 $86^{\circ} 52' E$



A Waves c

B Land c

5-2 many c

High c

Ridge line c

light colored c

Cool c

Clean smells c

Cold c

Windy c

Very Cold c

Hard Rock c

Wet cFB

Very Poor c

Grey PL

1238 00

Black cFB'

Very Rugged mountain

Sharp rocks
PC

Wind Sounds

Open air sounds

White

Blue gray c

Gray c

Mountain Range

w sharp rocks

Wind sounds

Color Gray

White - Very Cold Snow

Open Air Sounds

Glaciers

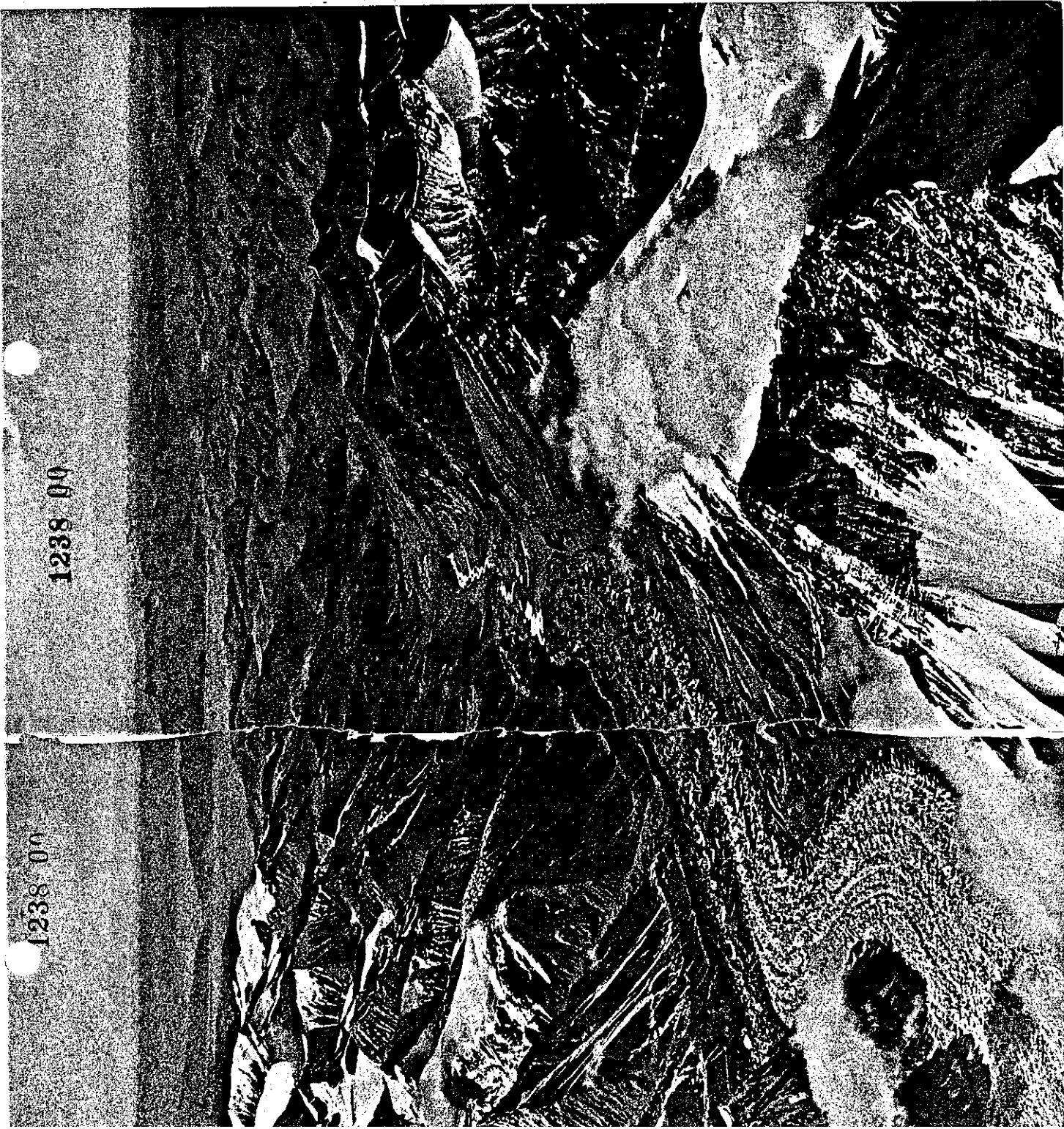
End

1238 00

1238 00

TIBET'S ROLLING HILLS stretch to the horizon in a view from Everest's summit. West Rongbuk Glacier at left flows into the main Rongbuk. Hundred-foot ice pinnacles, formed by differences in melting, break the surface of the frozen river.

Copyright © 1953, C. S. Bishop



1238 00

1238 00