

1159 00

Tom
17 Sep 82.
9.15

25° 35' S
54° 22' W

♀

A rising
B land PC

"

♀

A rough
B hills PC

"

♀

A rough
B hills PC

- S-2 green C
- bees PC
- brony PC
- rocks C
- sand cf.
- white C
- brown PC
- hut C
- wind sounds PC

grey af.

A vertical
B rocks c

25° 35'S
54° 22'W

9 c

A dropping -

s.21 M Break

hard
rocky
brown
rough
outdoor sounds
dusty smells
tree smells
sour

"

9

A

End
on sketch

A1 Wow

Ridge line vally
cliffs

1159 00

TOM
17 Sept 82
0915

250 35'S
54° 22' W



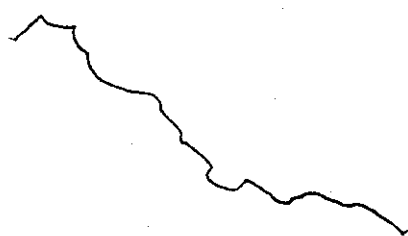
A - Rising
B - land PC

250 35'S
54° 22' W



A - Rough
B - hills PC

250 35'S
54° 22' W



A - Rough
B - hills PC

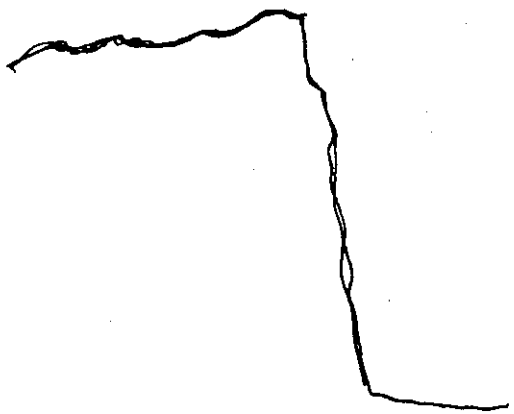
S-2 Green
Trees PC
Brown PC

1159 00

Rocks c
Sand CFB
White c
Brown^{PC}
Hot c
Wind Sounds^R
Grey^{CFB}

A Vertice Rock c
B Rock c

50° 35' S
54° 22' W

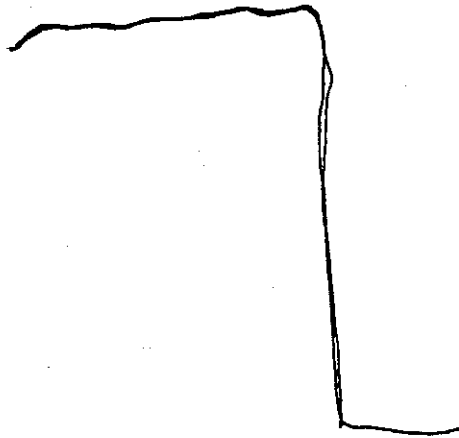


A - miss Breck
A High ~~dropping~~ leveling
B Valley

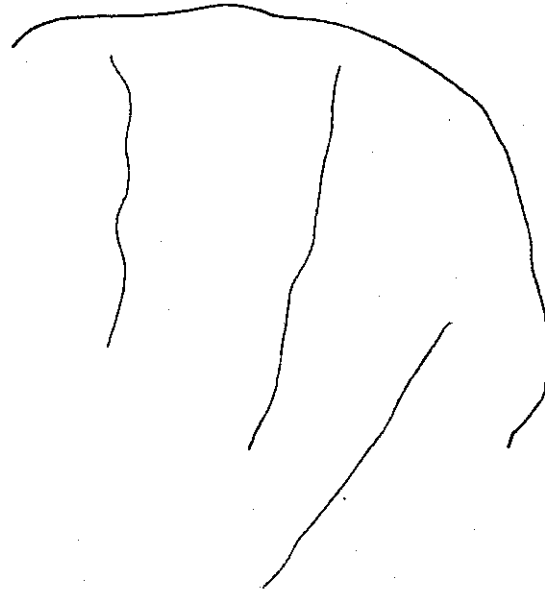
S-2
Hard
Rocky
Brown
rough
out door sounds
dusty smells
tree smells
Sour

115:00

50° 35' S
54° 22' W



A Rough
Smooth flowing



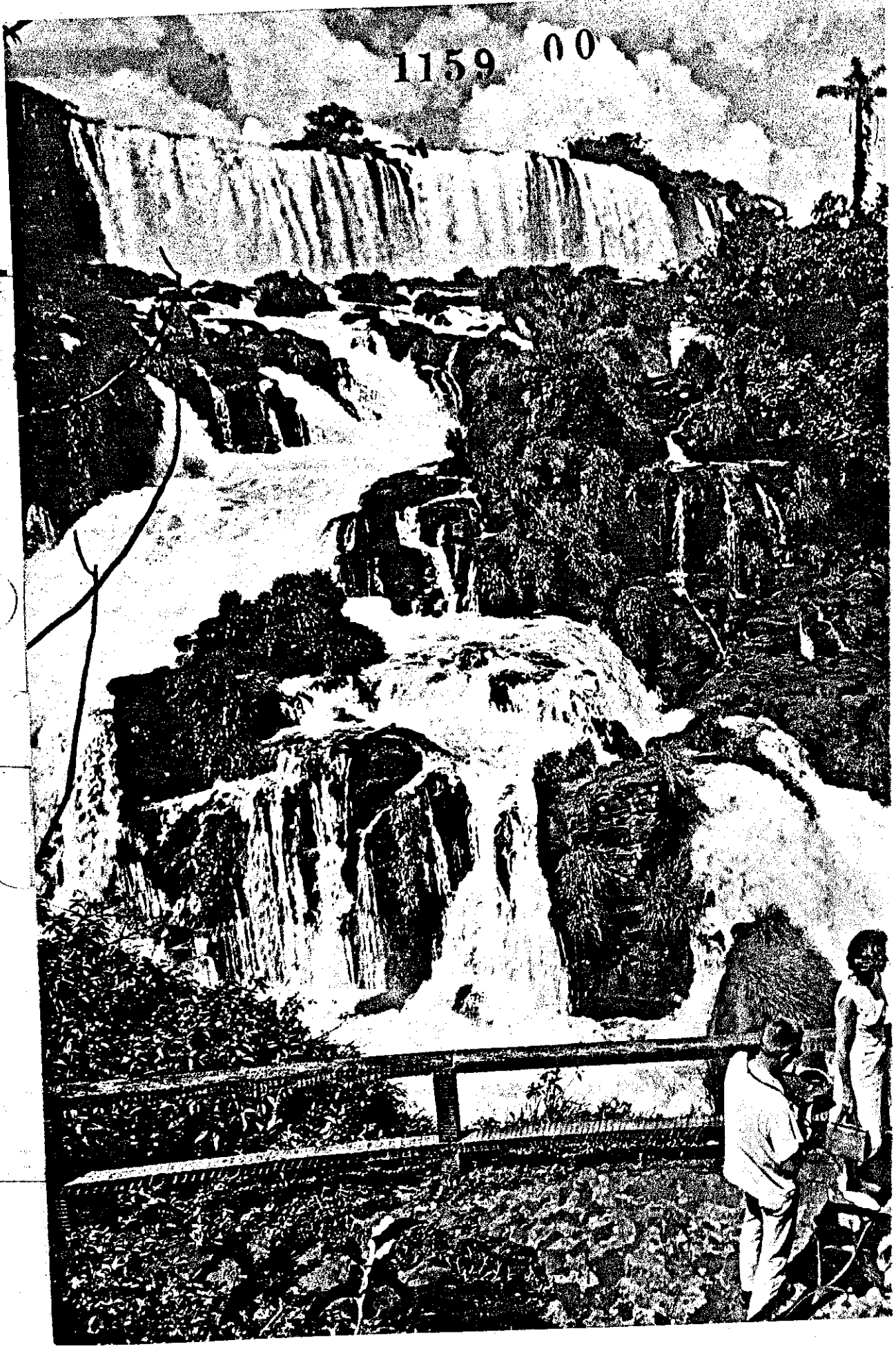
End

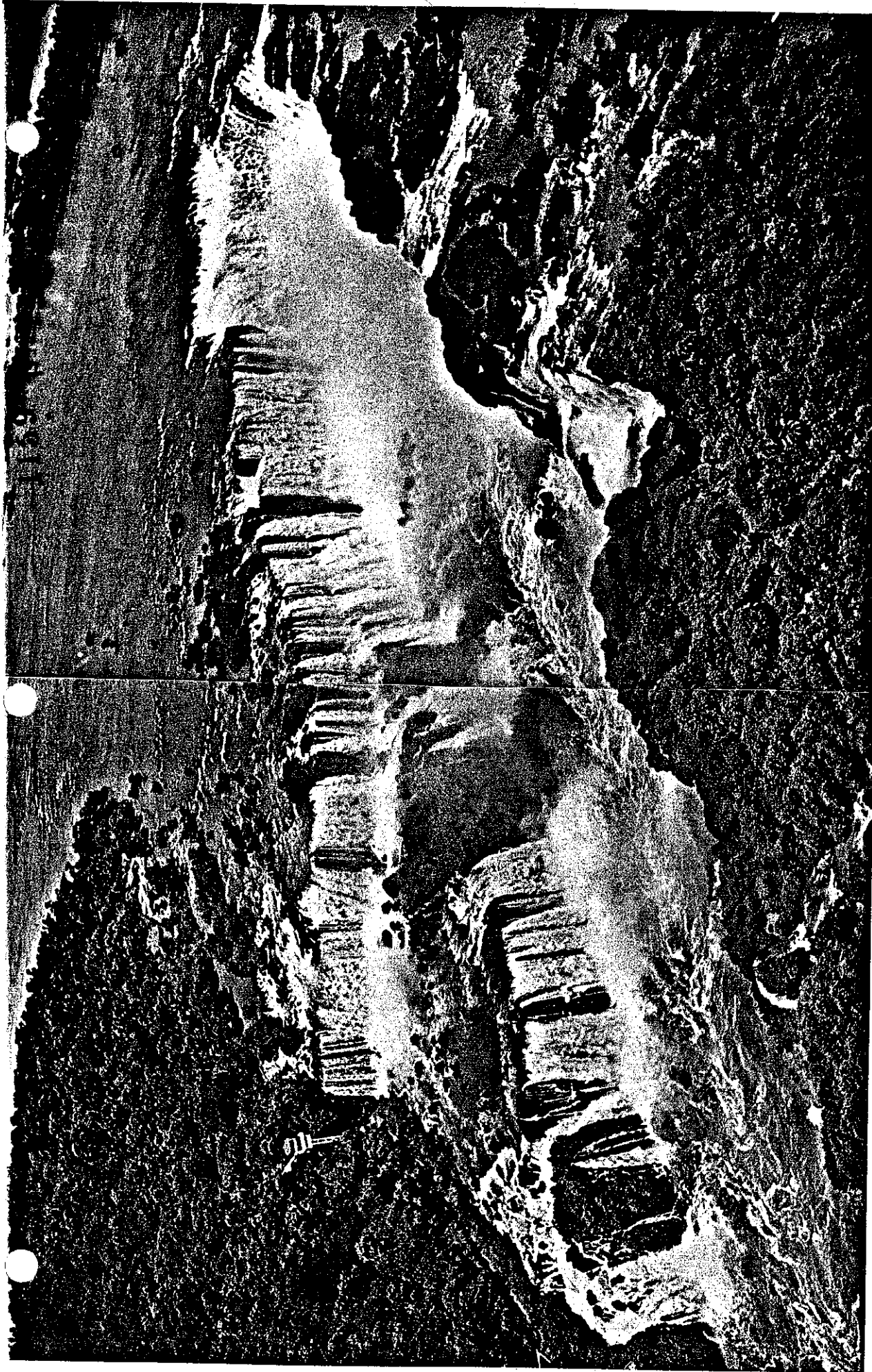
Wow

Waterfall

Ridge line Valley
Cliffs

1159 00





Thundering Waters of Iguazú Falls Leap 237 Feet Into Devil's Throat One of the world's greatest cataracts shatters the Iguazú River between Argentina (near bank) and

Brazil. Excursion steamers from Buenos Aires reach the falls in six days. Brazil maintains the elevator and observation tower at left. Rainbows often paint the entire gorge.

