

Jan
20 Sep 82
8.29

1237 00 .

20 50's
35° 13' E

I

A M
Break

Breaks

9

A wavy
B land c

"

9

A rising
droppings
B hill c

"

9

A rising
change dir
droppings
B peaks.

S. 2 grey of
rocks PC

open c
A/B Breaks
tingles
Pretty

S.2 sunny af
high
surrounded af.

2° 50' S

35° 13' E

f

A rivins

B -

S-2 smooth af.

"

f

A rivins

B peaks

S.2 Brown pc
white

have mtn surrounded
by smaller peaks.

Red Bre

1237 00

2° 50' S
35° 13' E

I

A long
B —

"

I

A m
Breaks

"

I

A angle
B —

"

I

A m
Breaks

"

S-2? —

I

A long flat
B land pc

1237 00

(24)

S-2?-

20 50' S
35° 13' E

♀

A flat
Wavy
B land C

"

♀

A M
Breaks

S-2? open c
gently rolling c
quiet PC
cool c
breezy PC
motion c.

smells?
dry plant smells c
Sandy PC
hard + coarse PC

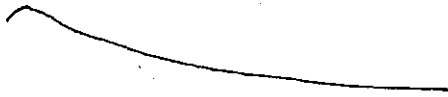
1237 00

TOM

20 Sept 82

0829

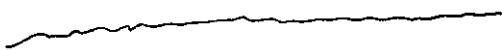
2° 50' E
35° 13' E



A — M Break

~~2 Break~~

2° 50' S
35° 13' E



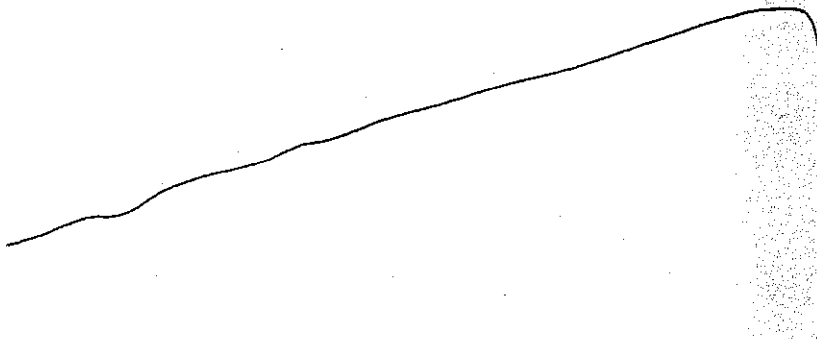
A - Wavy
B - land C

2° 50' S
35° 13' E



A - Rising Drop in
B - Hill C

2° 50' S
35° 13' E



A - Rising CID dropper
B - Peak

(Down)

S-2 Gray CFB

Rock PC

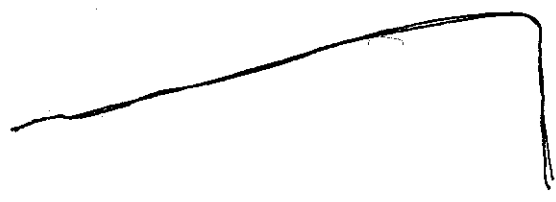
All Break Open C

tingling
Pretty

Smiling CFB
high

surrounded CFB

2° 50' S
35° 13' E



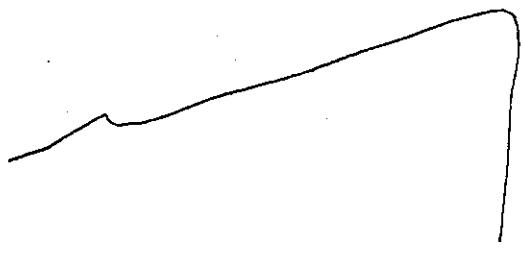
1237 00

(2)

A Rising
B —

S-Z Smooth CFB

2° 50' S
35° 13' E



A Rising Peak
B Peak

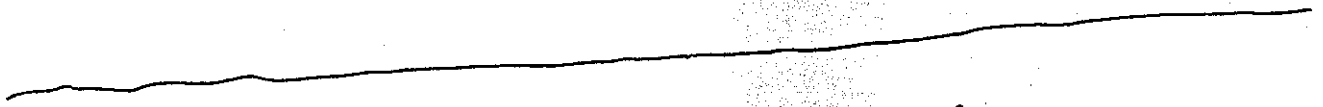
S-Z Brown Pl
White

Ad Brook

NO, I DON'T.
(elhar)

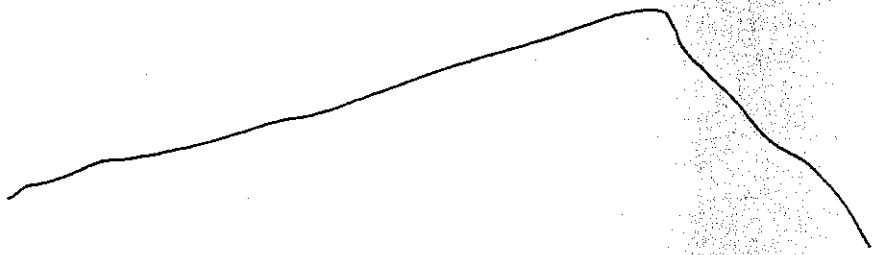
Mountain surround
By smaller peaks

2° 50' S
35° 13' E



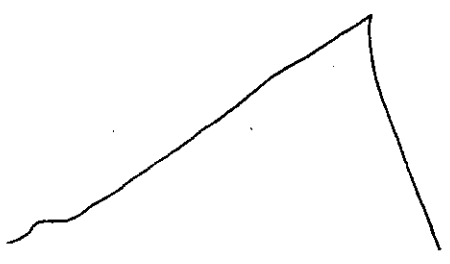
A long
B —

2° 50' S
35° 13' E



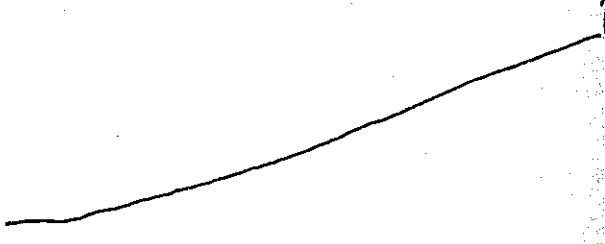
A — Miss Beek

2° 50' S
35° 13' E



A Anglee
B —

2° 50' S
35° 13' W



Miss Beek

2° 50' S
35° 13' E



A. long flat
B land PC

2° 50' S
13° 13' E



A - flat wavey
B - land c

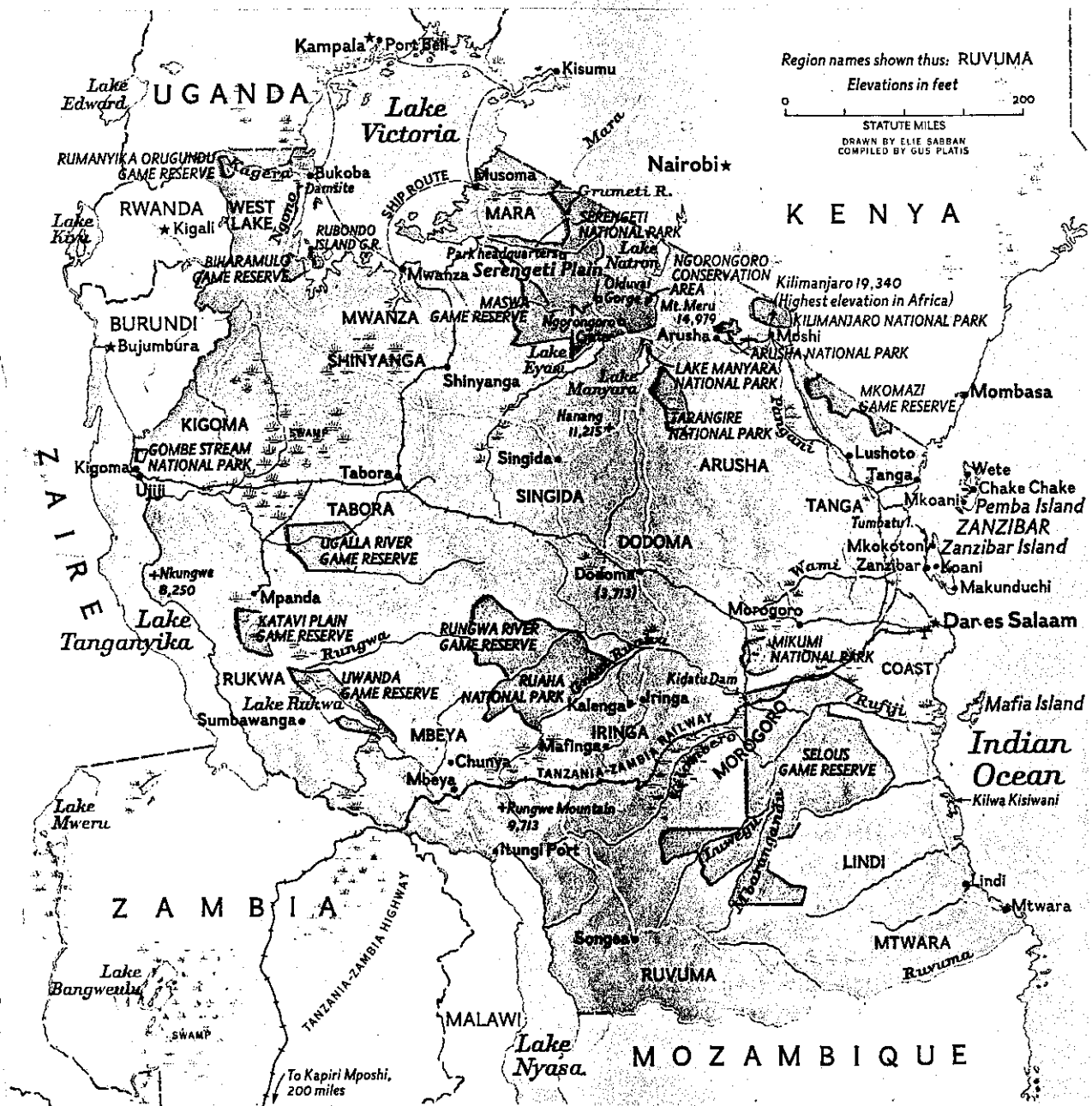
2° 50' S
35° 13' E



A - Miss Break

- S-Z open c
- gently rolling c²
- quiet pc
- cool cfb
- Breezy pc
- motion cfb
- dry Plant
- smells c
- sandy pc
- hard and coarse pc

End



1237 00

TANZANIA

GREEN OF THE LAND and blue of the sea fuse in a bond of African brotherhood on Tanzania's flag. United beneath it live more than 100 tribes, in a country that ranges from the tropical eastern coast to the shores of the continent's three largest lakes—Victoria, Tanganyika, and Nyasa. The mainland was part of German East Africa until



Britain gained control after World War I. Off the coast, Arabs who enslaved the islanders used to boast, "When the pipes are played on Zanzibar, all Africa east of the lakes

must dance." The pipers had changed their tune by the time Zanzibar became a British protectorate in 1890; it gained independence in December 1963. Just 34 days later, a bloody coup installed the black nationalist Afro-Shirazi Party that governs today. In 1964, Zanzibar joined Tanganyika to form the United Republic of Tanzania.

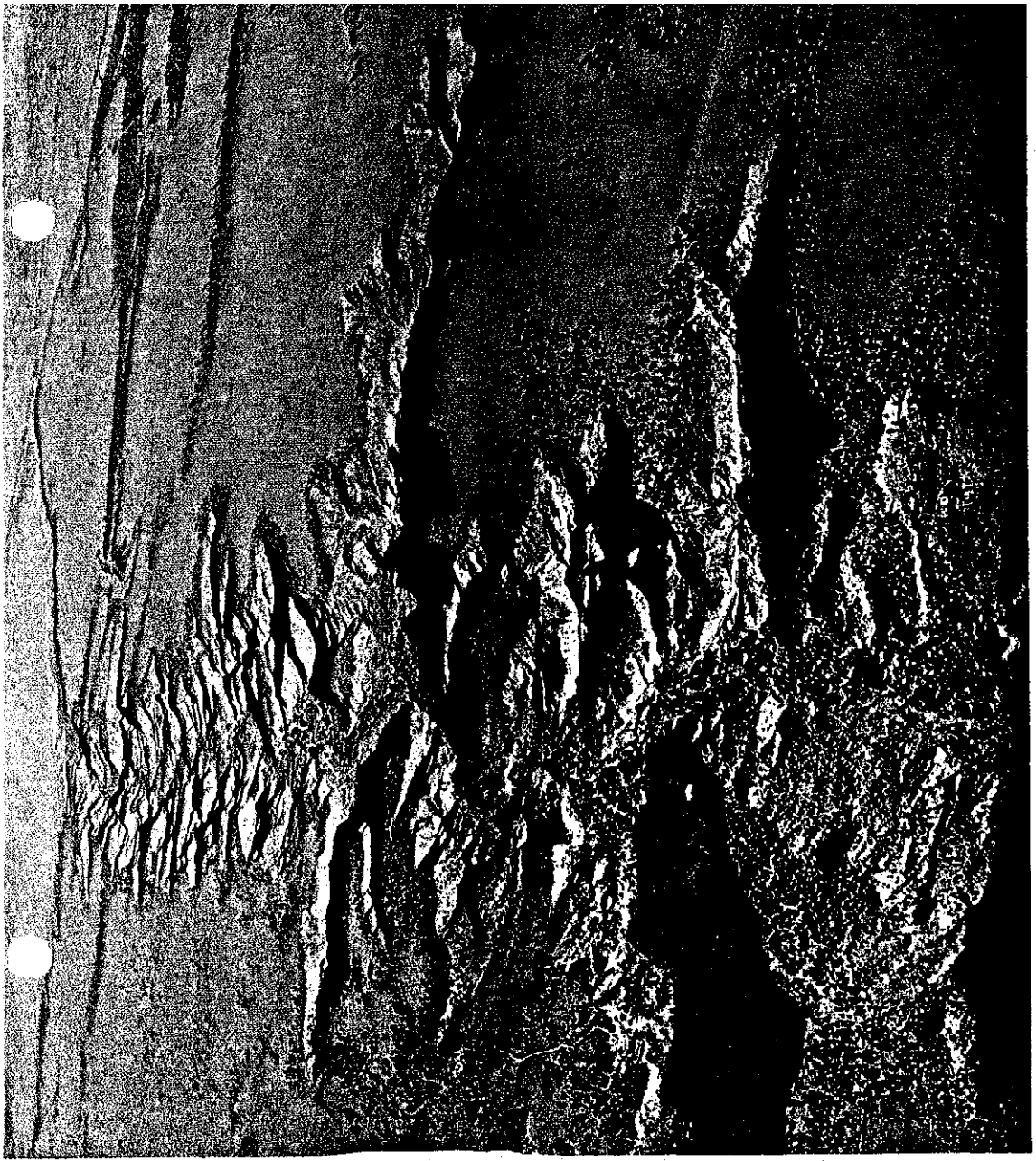
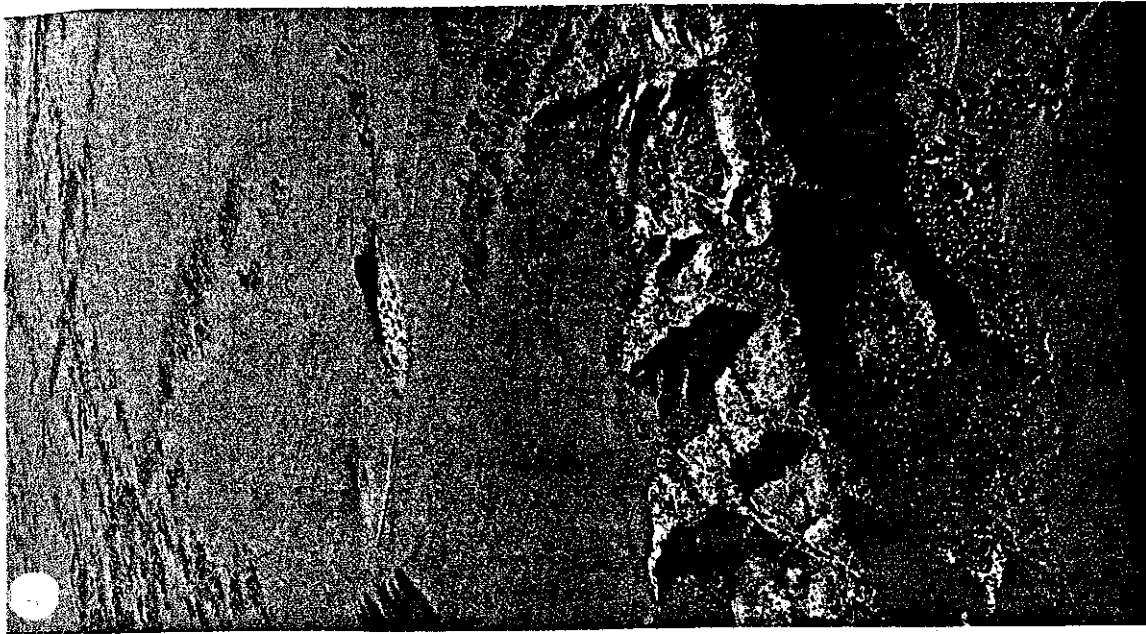
AREA: 363,000 square miles. **POPULATION:** 14,000,000. **LANGUAGE:** Swahili ("Mother's breast is sweetest, no other satisfies," wrote an African poet about the Bantu tongue), English, tribal languages. **RELIGION:** Christianity, Islam, traditional tribal beliefs. **ECONOMY:** Coffee, cotton, sisal, cashew nuts, cloves. **MAJOR CITY:** Dar es Salaam, capital, pop. 500,000. **CLIMATE:** Hot, muggy coast to freezing mountain peaks.

and pull out.
 e's animated
 ed antelope?"
 k of impalas,
 or gnu); about
 s it is to see so
 lmy together.
 ly from Con-
 paradise."
 is memorable
 e foliage, how
 dung. Who
 elephant prop-
 rnk? Or by
 By 10:30 the
 e tourists are

This 11-by-13-
 gh rim and all
 led the eighth
 encircling four
 cles—27 cam-
 ss yawns. And
 a paradise but

Serengeti
 Olduvai Gorge
 y studies some
 ver found, and
 k. It's bigger
 te.
 geti Research
 ne up in a high-
 ms of migrat-
 To count them,
 number with-
 f by streamers
 the plane.

walking... and
 ... and 2,000
 Brumeti River.
 9 feet... Hold
 k of European
 e could crash.
 wildebeest; the
 ti is 1,200,000.
 those will die
 still add up to



1237 00



1237 00

Sun-bronzed graveyard, Olduvai Gorge entombs the skeletal remains of early hominids—relatives of man. The bones have been painstakingly excavated here in Tanzania's Serengeti Plain by the Louis Leakey family, aided for 15 years by National Geographic Society grants. Dr. Mary Leakey (right), here helped by a student, carries on the work of her late husband. On July 17, 1959, she discovered part of a skull and two

