

Tom
21 Sep 82
1.55

1241 00

40° 39' 11" N
113° 31' 35" W

I

Arising
Bland

"

Abort

TOM
21 Sept 82
1355

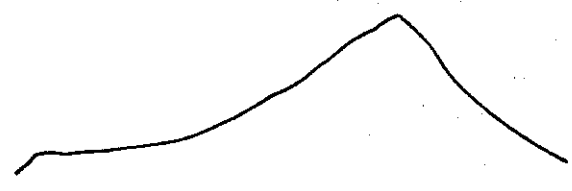
40° 39' 11" N
113° 31' 35" W



.1241 00

A Rising
B land

40° 39' 11" N
113° 31' 35" W



A Rising
about
Z

1241 00

Great Salt Lake Desert

40° 39' 11" N

113° 31' 35" W



MEMO

TO

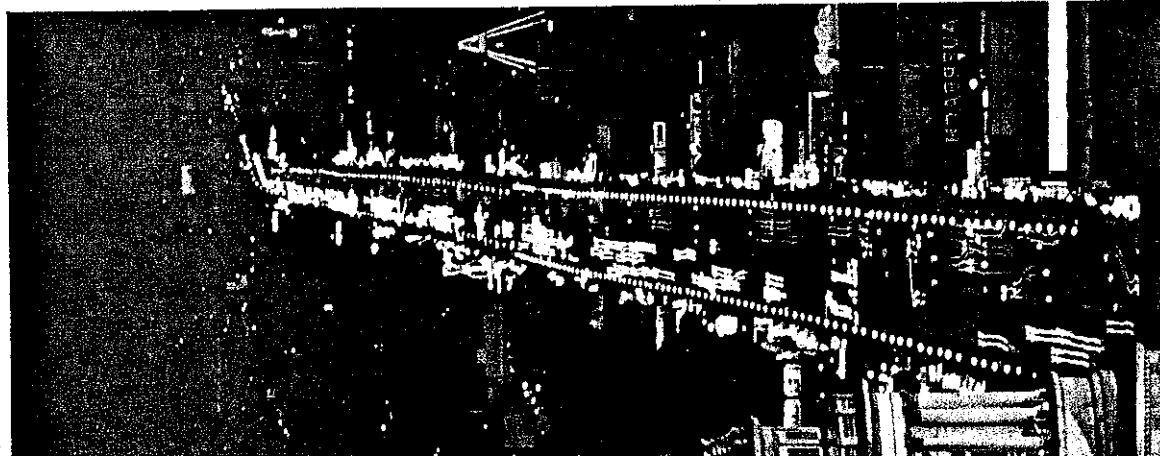
DATE

Wendover force
Area, Range

this is a
hill

to Hite, Utah. "If you object to it," I asked as a lay on the river. "I decided 'if I remember when I met the jackrabbits in they met. Now they can come out of the hole." Colorado we succeeded as our feet high.

*See "Three Roads to Rainbow," by Ralph Gray, NATIONAL GEOGRAPHIC, April, 1957.



both sides. This side canyon, like many of its neighbors, is doomed to drown behind Glen Canyon Dam. On the other hand, many natural beauties now barely accessible to the average vacationer—magnificent Rainbow Bridge, for example—will be a comfortable speedboat ride away.*

A windstorm blew up, whipping sand and spume in our faces at the same time. When we returned topside and reached Wahweap, we found the storm had been a real roarer.

Jean as we beat our way through southern Utah toward National Park.

Canyon of the City of God

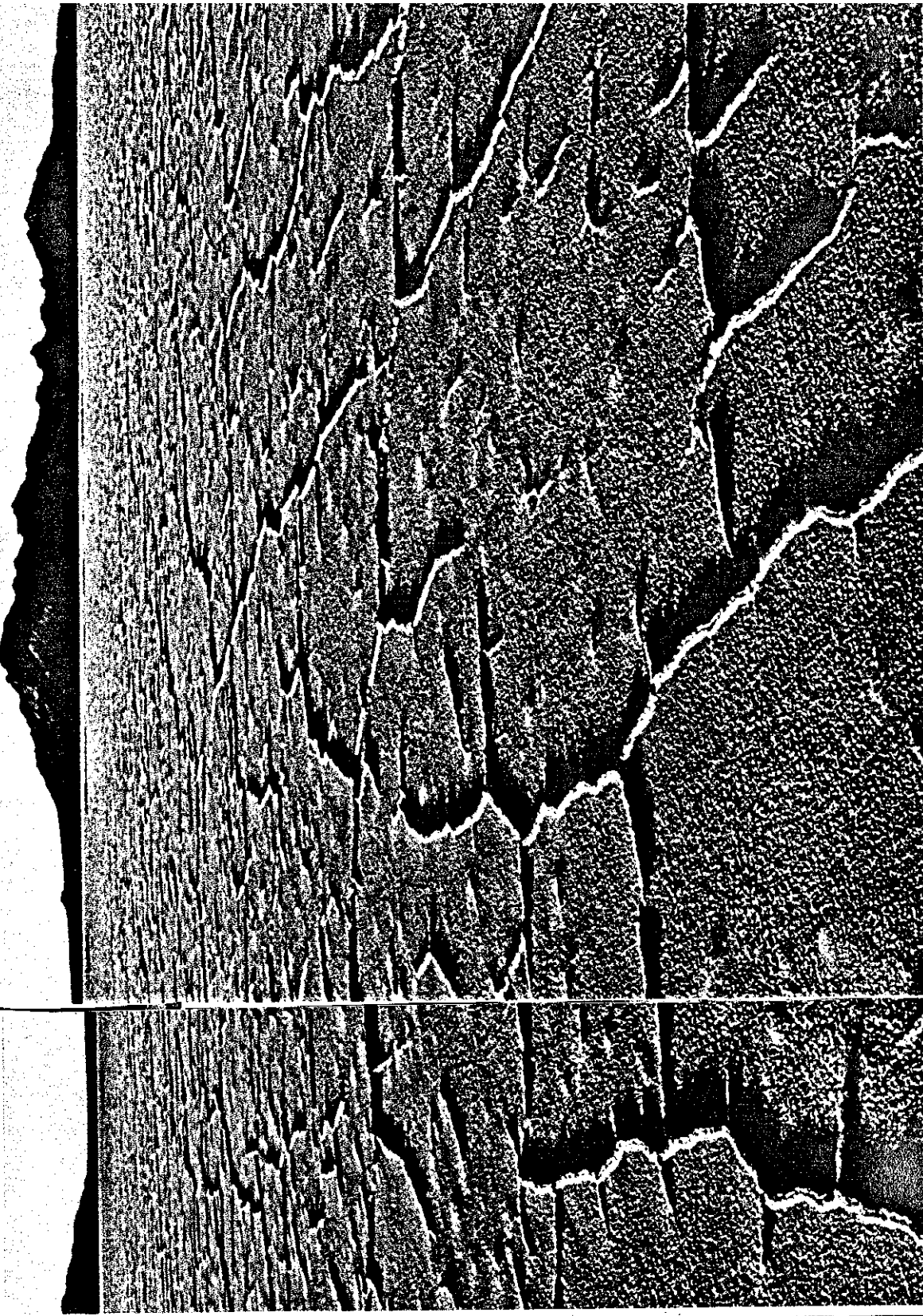
Zion was a name the Mormon pioneers, who settled all of what is now Utah, gave their desert realm. The term "heavenly city of God" seems especially appropriate for awesome Zion Canyon, lined by great stone temples not built with hands.

We wound our way through the Zion-Mt. Carmel Tunnel and over switchbacks down

to a metropolis of 417,000. This telephoto view looks south from Ensign Peak.

Like icebergs in a frozen sea, peaks of the Silver Island Mountains rise from lifeless flats in Utah's Great Salt Desert. California-bound pioneers in covered wagons struggled six days to cross the 80-mile-wide waste. In 1963 race driver Craig Breedlove set a world's speed record for jet-powered cars by averaging 407.45 miles an hour on nearby Bonneville Salt Flats Speedway.

ERIACHROME (BELOW) BY NATIONAL GEOGRAPHIC PHOTOGRAPHER DEAN CONGER AND KODACHROME BY JAMES P. BLAIR © N.G.S.





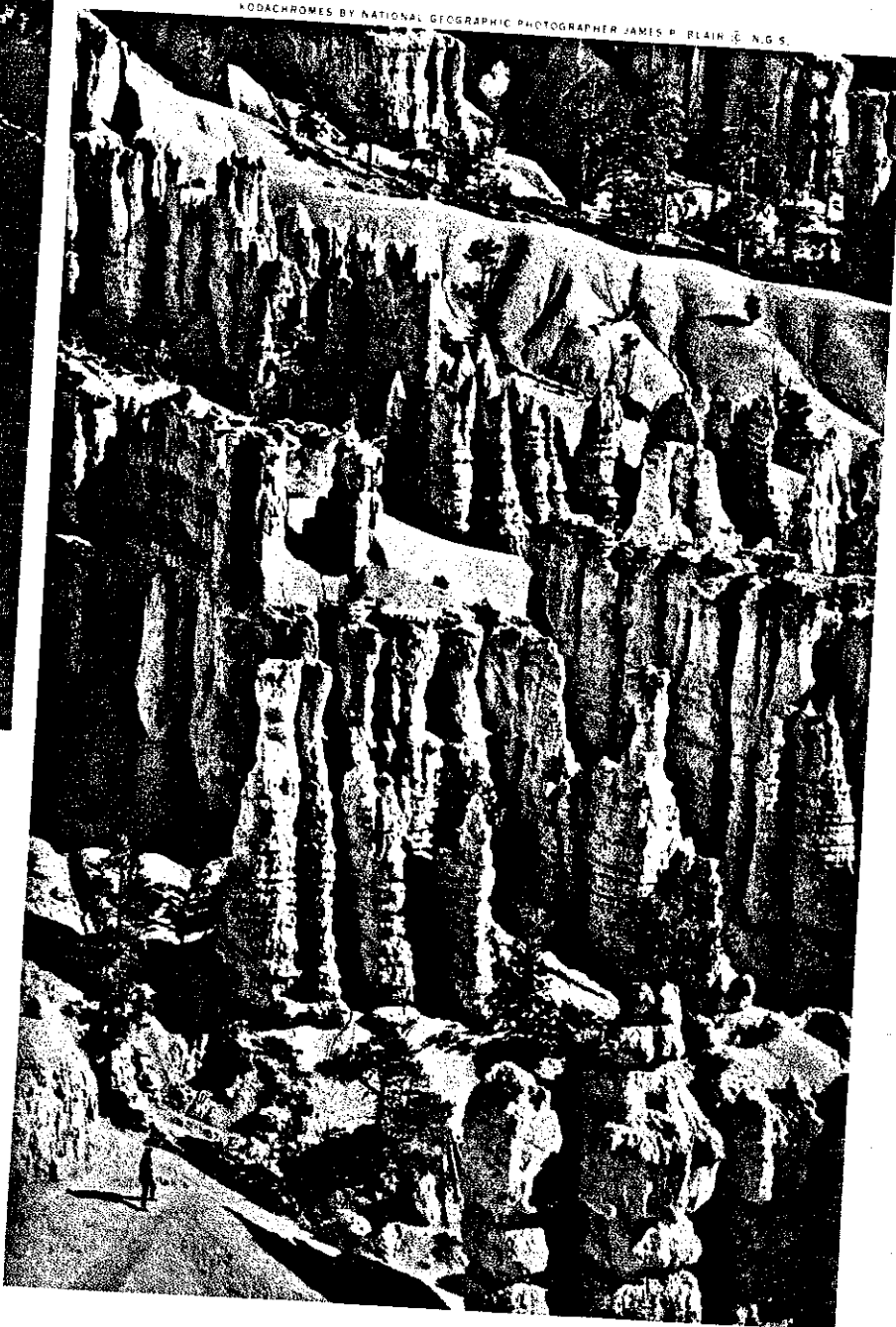
Road and River Wander Through Zion Canyon

Tumbling to the Colorado River with a burden of silt, Utah's North Fork of the Virgin River has carved its way grain by grain through the plateau for 13 million years. Today the top of the Great White Throne (left) lies a dizzy half mile above the canyon floor. White dunes that blew in on desert winds 160 million years ago now form the sandstone of the Throne. This lofty view is from Observation Point.



Saucy roadrunner at Arizona-Sonora Desert Museum kept photographer Jim Blair running for two hours to capture its picture. *Geococcyx californianus* belongs to the cuckoo family.

KODACHROMES BY NATIONAL GEOGRAPHIC PHOTOGRAPHER JAMES P. BLAIR, © N.G.S.



Grotesque chessmen parade down the edge of Paunsaugunt Plateau in Bryce Canyon National Park, Utah. Erosion slowly crumbles away soft rock save where caps of harder stone offer protection. In the millions of years since the plateau arose, the rim has been eaten away in fantastic varicolored shapes. Visitors wander wide-eyed, scarcely able to believe that wind, water, ice, and gravity could work such miracles.