

1243 00

tom
14 Sep 82
10.00

44° 48' S
167° 46' E

I

A not like Bldg.
Aol Break

"

I

VH?

A solid.
B land C

A +

A shaly

B —

S-2 shaly
floating C
Calm cf.
shiny C
sandy cf.
brown cf.
rocks C

sea smells

"

I

A curving.
B water C

A solid
B land c

A liquid
B water c

S-2 brown of.
rock c
grey c
cutt pc
shiny pc
blue c
dots cft

Sounds? quiet sounds

Misty c
open sounds
sharp rocks c

Aal Breaks

like pacific NW
rocky shore line
rising from water
& fosse.

1243 00

3

4 W int / rocky /
sharp rocks / mists /
dots / blue / grey /
open sounds /

44° 48' S

167° 46' E

I

A water C
B flowing.

A up solid down.

B Peak. N

A flowing.

B waste C

S. 2 grey green C

green C

rocky C

quiet St.

quiet roaring C

sounds P C

Isal Breaks

A grey rocky island.
deep blue water
bees deep island.

1243 00 LW/water/rocky/
grey green/quiet rocks/
sharp rocks/misty/

44° 48'S

167° 46'E

I

A up pe.
B peab N

S-2? long
Aol Breaks.

"

I

A up rolling down.
B land - C

S-2 brown grass cf.

// A up down
up down.
B plabs pc

S-2? hard c
cold c
grassy pc
A 1 large open feeling.
Breaks

1243 00

- cold c
- grey white PC
- green c
- ocean sounds
- rosary c
- cold smells
- grey
- green | c
- white
- bluegrey sky PC
- desolate
- outdoor sounds
- tall c
- rocky c
- cold c
- open c
- land high c
- water deep
- cold PC
- green PC c

End.

1243 00

17m
14 Sept 92
1000

44° 48' S
167° 46' E



A Buildings
Aol Break

44° 48' S
167° 46' E



A Solid
B land Above
C

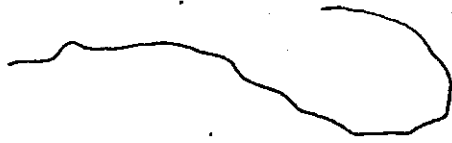
A —

A Shaky line

B —

S-2 Shaky
Sea Swells floating C
Calm CFB
Shiny C
Sandy CFB
Brown CFB
Rocky C

44° 48' S
170° 46' E



1243 00

A Curing

B Water c

A solid

B land c

A liquid

B water c

S-Z Brown / CB

Rocky c

Grey c

Gold PC

Slimey PC

Blue c

dark c

Quiet sound

misty c

Open sound c

Sharp Rocks

Aol Beck

Pacific North
west

Rocky shore line
rising from
water

Salty

3

foam

1243 00

L/W interface which is rocky - sharp rock
mists
dark
Blue
Grey
open sounds

Aoz Beck
SALM

44° 40' S
170° 40' E



A Water flooding
B Water c

A up solid peak down
B land-rising peaks NS

A ~~whirling water~~
B water C

S-2

Sounds Gray Green c

Aoz Beck
Gray Rocky Island
deep little water
near steep island

Green c
Rocky c
Quiet cfb
Quiet roaring

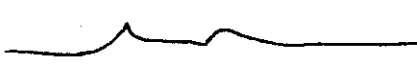
Sum

L/W interface w/2 water

1243 00

Rocky Grey Green - sharp rocks
Green
Quiet roaring sounds
misty

44° 48' ~~E~~
167° 46' E



C/D
A up ~~peak~~ down
B Peak N/S

S-2 long
Hot Break shore line

44° 48' S
167° 46' E



A Up Rolling down
B land Hill
C

S-2 Brown Grass FB

M

A UP cp Down
UP cp Down

B - Pecks
1 Plumel 1

S-2 Hand c
Cold c
Gramp c

1243 00

AT Break large open
feeling

S-2 Cold c

Grey white R

Green

Ocean sounds
(cat)

Roaring sounds

Cold smells c

Grey

Green

white

Blue grey sky c

desolate cFB

Outdoor
sounds

fall c

Rocky c

Gold c Openc

Both land
High

Water deep

Gold c
Green c

w/c surface land grey rocky
Water prob cold green
land high cold

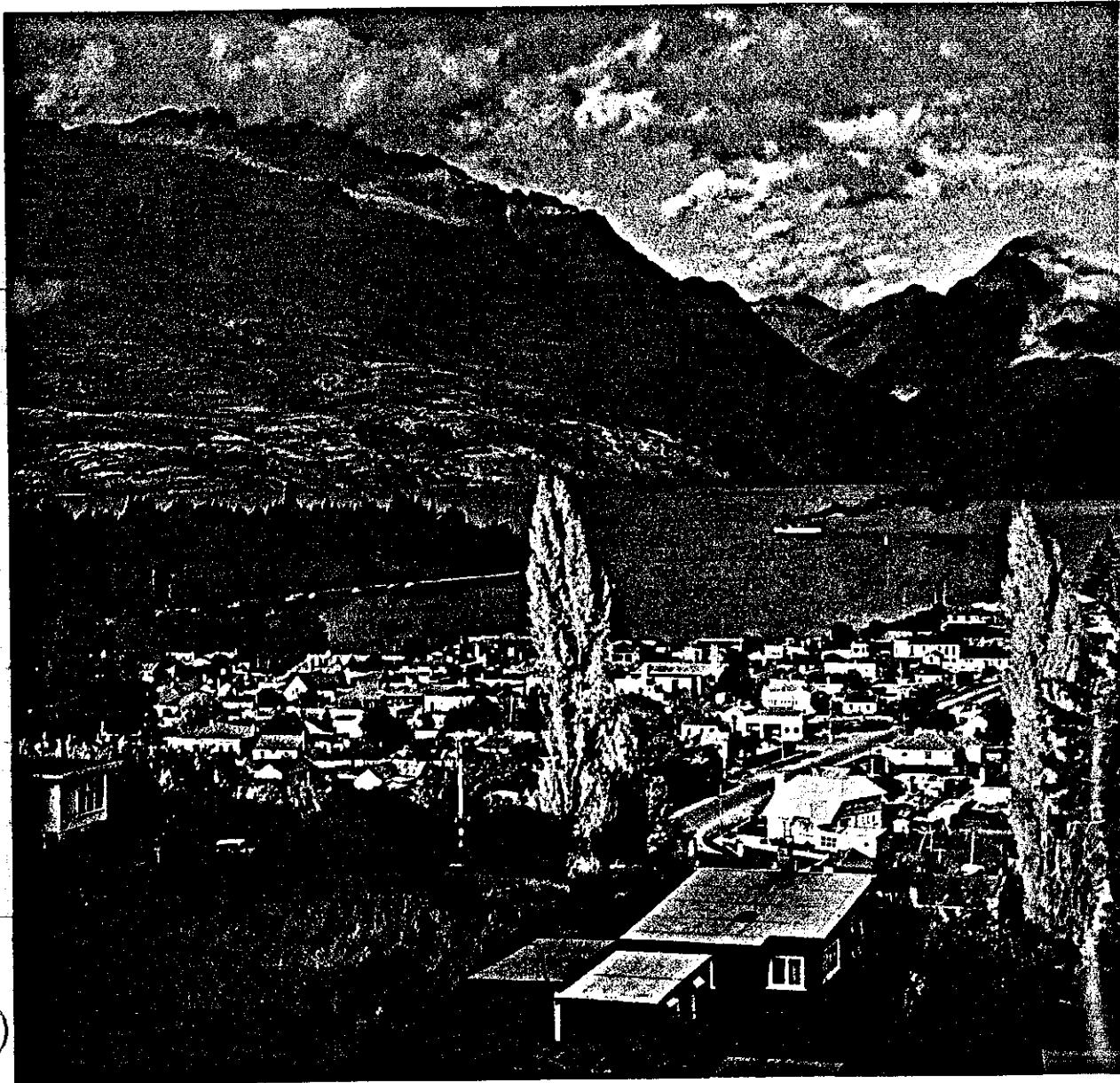
swelling
water

Cotton clouds tuft mile-high cliffs above majestic Milford Sound. Here the most magnificent of New Zealand's dozen-odd fiords joins the Tasman Sea. Cruiser *Royalist*, flagship of the nation's navy, slices the channel carved by a vanished glacier.

1243 00

Like molten metal, Sutherland Falls, one of the world's highest, spills from Lake Quill and explodes in rainbows almost two thousand feet below: an aerial view.





1243 00

third island, famous for oysters and scenery. Southland one day may have one of the biggest aluminum industries below the Equator. A smelter with 250,000-ton capacity is planned at Bluff, near Invercargill, with completion in 1967. It will refine Australian bauxite and ship it to the world.

A few miles from Queenstown, past Lake Hayes and the ski grounds of Coronet Peak, we came to Arrowtown, a peaceful survival of Otago's gold-fevered past. History settles as gently as afternoon sunlight upon its old gold miners' cottages set beneath huge English trees. Here Brake and I took breath after 6,000 miles of travel and prepared ourselves for the last long lap of our journey.

First we traveled out of Central Otago, along rocky gorges and past tumbling rivers, through sheepland and orchards, down to the

city of Dunedin. Dunedin is the ancient name of Scotland's Edinburgh, and it was given this name by Scottish pioneers. A statue of the Scottish poet Robert Burns—his nephew Thomas settled here—has pride of place in the city's center (page 508).

We were heading north. Back the way we came, and then as far as we could go.

Look at your map of New Zealand; at the thin peninsula that rises like a pointing finger from the most northerly part of the country. This was where we were headed. Why?

There was the old Maori I met at the Ngaruawahia regatta. "So you are trying to tell the story of New Zealand," he had said. "Well, you will never tell the story properly unless you tell of Te Rerengawairua, the leaping-off place of the spirit of the Maori after death.

"Go to Cape Reinga. Look out upon the