

1242 00

Tom
14 Sep 82
1.26

35° 7' 43" N
116° 2' 12" W

I

A rise change
large fall.
B flat.

A peab.
Con
Breaks.

"

I

A rise roll fall
B peab

A falling down
B -

A flat
B land PC

"

I

A rise flat fall
B -

35° 7' 43" N
116° 2' 12" W

I

A sm

S-2 smooth
flowing
grey green
Calm

"

I

A flat
B land c

A vert.

B -

S-2?

"

I

A flat

A flat
B -

A vertical

B -

S-2? A rolling down

B =

S-2? solid c
shifty c

1242 00

③

soil
sand -

avg C

open C

flat C

height

inter

hills & flat. S

End.

1242 01

Tom
14 Sept 82
1326

$35^{\circ} 7' 43'' N$
 $116^{\circ} 2' 12'' W$



A Rise clb large fall
flat
B Peak

Com Break

$35^{\circ} 7' 43'' \checkmark$
 $116^{\circ} 2' 12'' E$



A Rise roll fall
B Peak

A falling down
B —

A flat
B land PC

1242 00

35° 7' 43" N
116° 2' 12" W



A Rise flat fall
B—

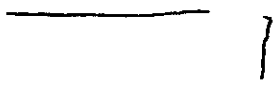
35° 7' 43" N
116° 2' 12" W



A - smooth
B—

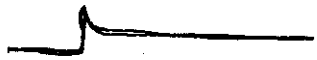
S-2 smooth
flowing
Grey Green
Calm

35° 7' 43" N
116° 2' 12" W



A Flat
B land
A verticle
B—

35° 7' 43" N
116° 2' 12" W



A flat ^{angle} rise

A flat

B —

A verticle

B —

A Rolling down

B —

s-2 solid c

shifty c

soil c

- Sand c -

any c

- Open c -

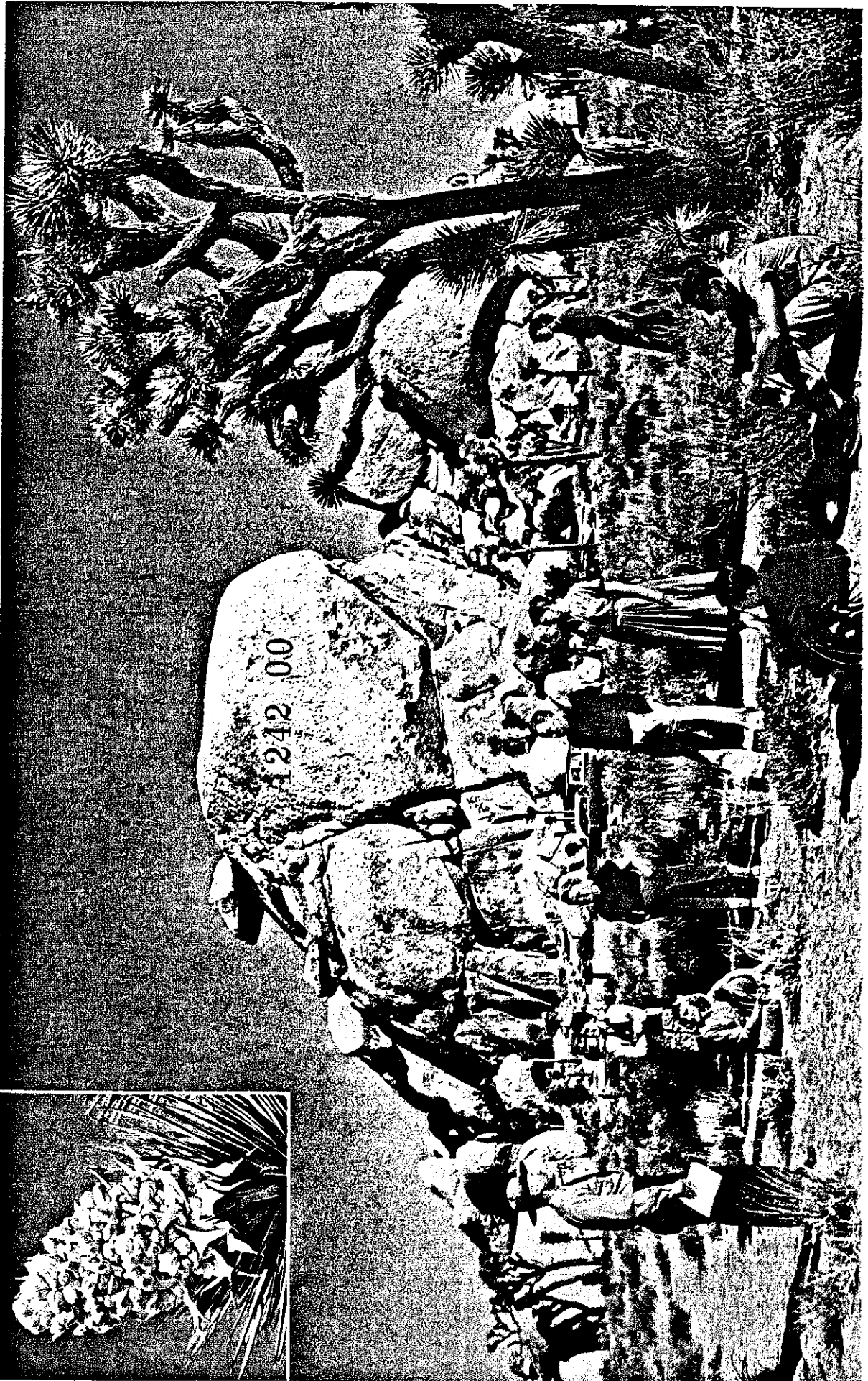
flat c

height

in face

hills and flat C

End





© National Geographic Society

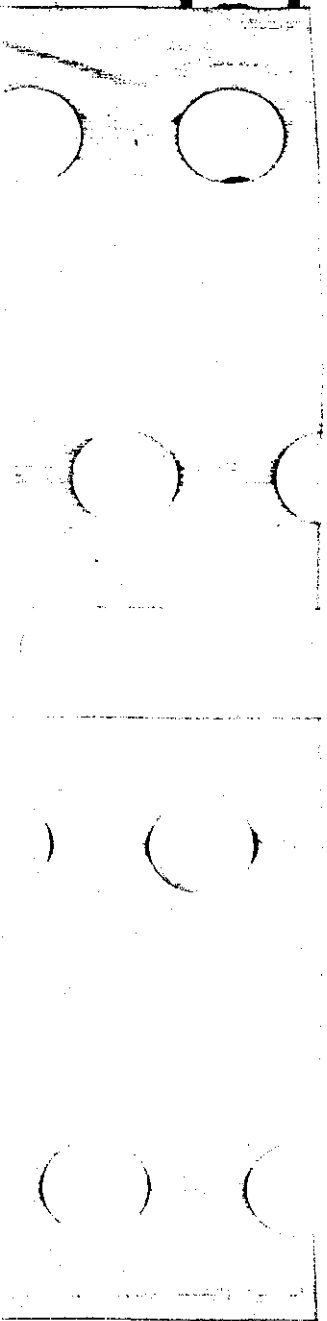
↙ Four Palominos Pull Hay Riders Past Deadman Point

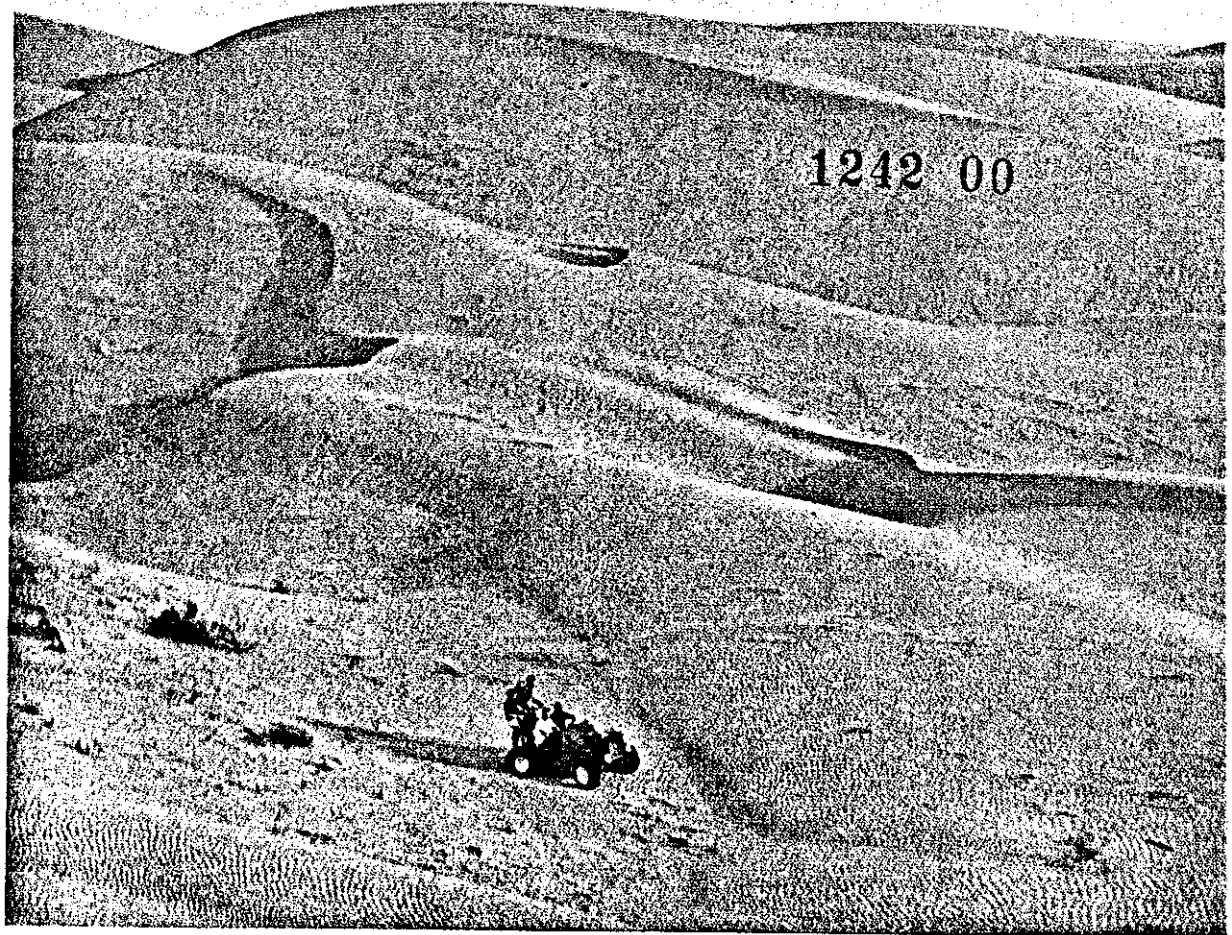
Conquistadors, gold seekers, pioneer traders, and camel caravans passed close by. Many motion pictures used the setting. Legend says Kit Carson killed an Indian here. These holidaymakers come from Apple Valley Inn.

720

↘ Visitors Hear a Lecture in Joshua Tree National Monument

Giant branching yuccas grow on all sides of Cap Rock, so called for its balanced headpiece. Park Superintendent Samuel A. King (in uniform) delivers a nature talk. Inset: A cauliflower-white bloom adorns the Joshua's arm in spring.





719

Dunemoobiles Track Imperial County's Sandy Sahara

Shifting sands of the Algodones dunes unfold such dramatic scenery that they have witnessed the making of *Beau Geste* and other movies. Deposited by a receding sea, the sands have been shaped by winds.

Sand buggies, often used to explore the desert, have new engines in vintage bodies. None uses a windshield; wind and grit blown in faces are part of the fun. Oversize tires carry five to eight pounds of air. To give traction to rear wheels, passengers perch behind the driver.

← Riders from Holtville enjoy a cook-out beside All American Canal.

↓ For thrills, drivers love to roar up a dune at full speed, their front wheels leaping into the air on passing the crest.

© National Geographic Society

