

40M
S-3

TOW

S-3

1282 00

Tom
17 May 83

10.52

87° 38' N
51° 36' E

9 C

A flat flat

B land

S. 2 hard
dabs
open
manmade
flat
blue pc

Adl Breeds

lake S.

End.

1282 00

TOM
17 May 83
105Z

87° 38' N
51° 36' E



A Flat/long
Bland

S-2
hard
dark
open
manmade
flat
blue PC

Aol Breck
Lake
Site

End

ranks as a leading Soviet producer of heavy machine tools, hydroelectric generators, and other electrical equipment. People throng wide sidewalks; taxis, private cars, trucks, tandem trolleys, and motorcycles crowd the streets. New apartments spring up by the thousands, a 24-story Intourist hotel rises downtown (page 144), and designers have scheduled a subway for completion by 1980—a project to which thousands of workers have been assigned, a city official casually informed me.

Novosibirsk remains a vital transportation hub and center of trade routes. Grain from the south, furs from the north, lumber from endless forests, and travelers from throughout the Soviet Union pause here in midpassage. This is a major stop on the Trans-Siberian Railroad's Moscow-Vladivostok run—seven nights and seven days, the longest train ride of all. Aeroflot's armada of sleek jets and workhorse propeller craft, some of them biplanes, strains airport facilities.

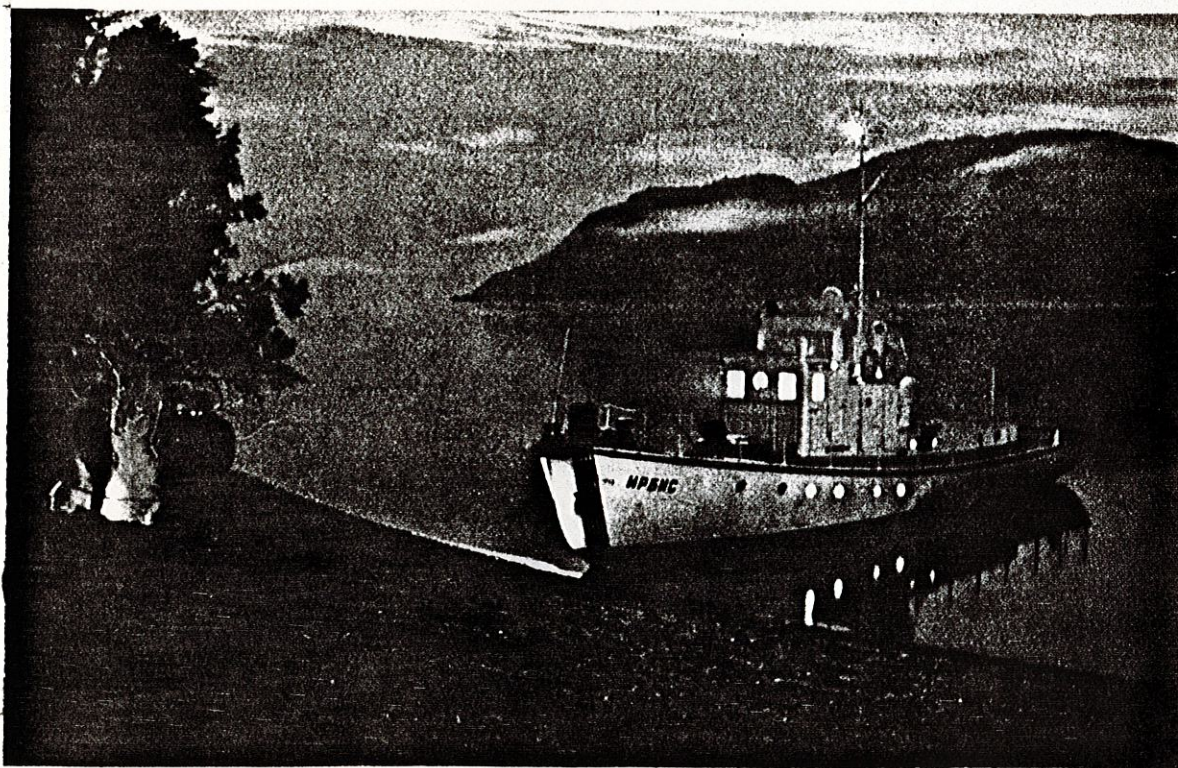
Down on the waterfront heavy ship and barge traffic plies the Ob. Dredges maintain the channel's depth and passenger ships carry people to villages, beaches, and forests. Grandmother would astonish the nomads who once roamed her banks.

Giant Port Could Be Even Bigger

One summer afternoon I rode along on the river past tilting cranes, shuttling freight cars, and barges gorging on bulk cargoes. Piles of sand, brick, crates, concrete slabs, boilers, and pipe lined the banks—the stuff of raw new wilderness cities and the key to untapped oceans of oil and gas.

Beside me the Port of Novosibirsk's director leaned against the rail of his white cabin cruiser and swept an arm. "That's just one of our 45 berths," said 39-year-old Vyacheslav Minayev. "The port extends for many miles along the Ob. We ship out ten million metric tons of cargo a year."

He frowned. "It isn't enough. The Tyumen



On mirror-calm Lake Teletskoye, a research vessel lies moored as scientists warm up by a fire ashore. Dozens of streams feed the deep, clear lake, nestled in the Altay Mountains. The lake in turn gives rise to the swift-flowing Biya, which rushes to a rendezvous with the Katun. Together they form the Ob—perhaps from the Russian word *oba*, for "both."