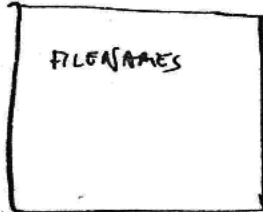


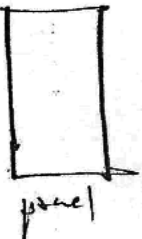
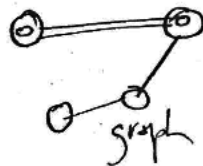
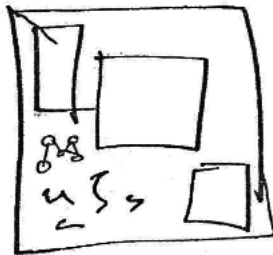
CONDENSED & RADICALLY EMPHATIC XANXOU STEPS. 14 Aug 70

DIRECTORY
PAGE, HOME BASE
from which
we assemble

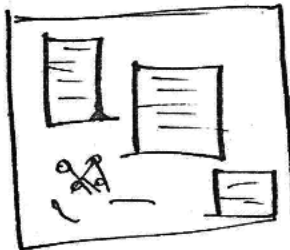


FILES are
INDEPENDENT
OR
DEPENDENT

FORMATS
of
panels
&
control stuff
&
graph of
files summoned
to the format
ALL COMPOSED ON THE SCREEN BY THE USER



SETUP
in which
entities
from the
file graph
are
assigned to
panels,



either one to a ~~file~~ panel or more for merge.

TWO OR MORE
MULTICOUPLED
FILES OR STREAMS
MAY BE MERGED
IN ONE PANEL,
line-by-line or even
inserted.

& SOME FORM OF JUMPING BETWEEN SETUPS,
allowing the user to go between different activities.
interrupt &

EDITING OF TEXT.

cross out previous change visibly.

MULTICOUPLING

Two types (A model provision for more)

ROLLING

SET SPEED CONTROL

FWD & BACK buttons

(specify which panel moves by 1/10 per)

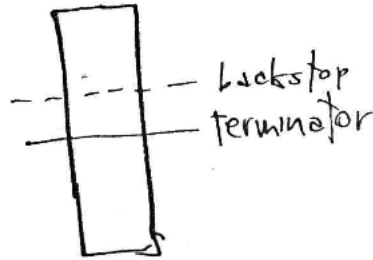
EVOLUTION, FORK, BACKTRACE / FLUSHBACK
UNDECIDED

HT LINKS,
JUMPS ON LINKS, RETURN

Necessary, but fairly trivial, all things considered.

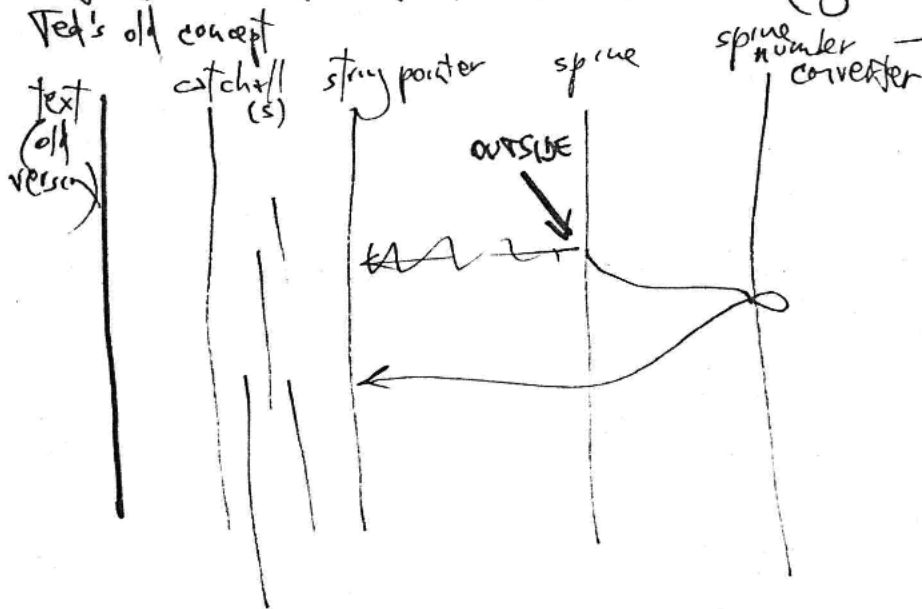
INTERNAL SPECS

Streams Pillows



(One approach)

STREAMS IN ACTIVE FILE ~~(working)~~



LOOKUP
 (prints to
 streams
 if
 blocks
 subjects
 whatever)

IMPORTANT ADDITIONS 16 AUG 70 / TN

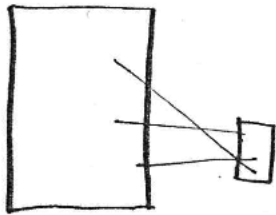
(trying to keep it down, though)

COMBINE FILES



(Each circle represents an interleaved or spliced-on subfile. Big circle means whole mess.)

SHOW LINKS BETWEEN PANELS option

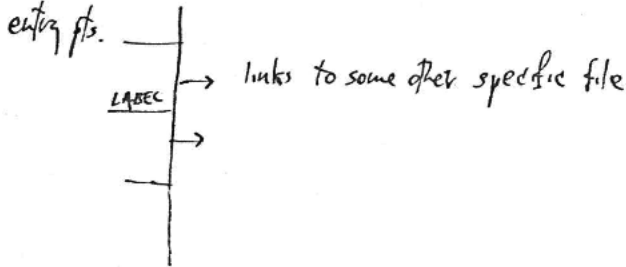


*nonessential
this imp.

HIDE PANEL LINES

*nonessential
this imp.

SEARCH BY FILE SPINE GRAPH



*nonessential
this imp.

FREEZE AT VERSION / KEEP CURRENT options on Setup push

[in other words, the pushed setup doesn't see subsequent changes.
"Dorin Gray" button? -17 Aug.]